

How to improve the appearance of MrSid image mosaics in ArcView

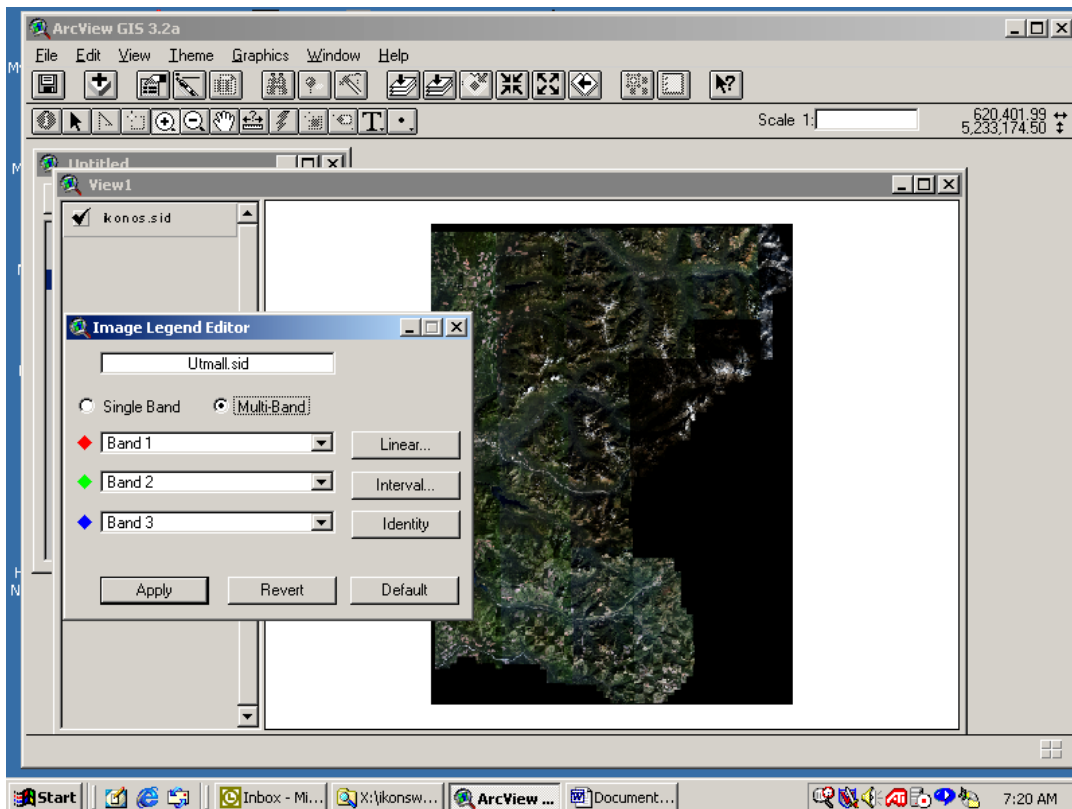
Mike Leathers, King County GIS Center

April 15, 2002

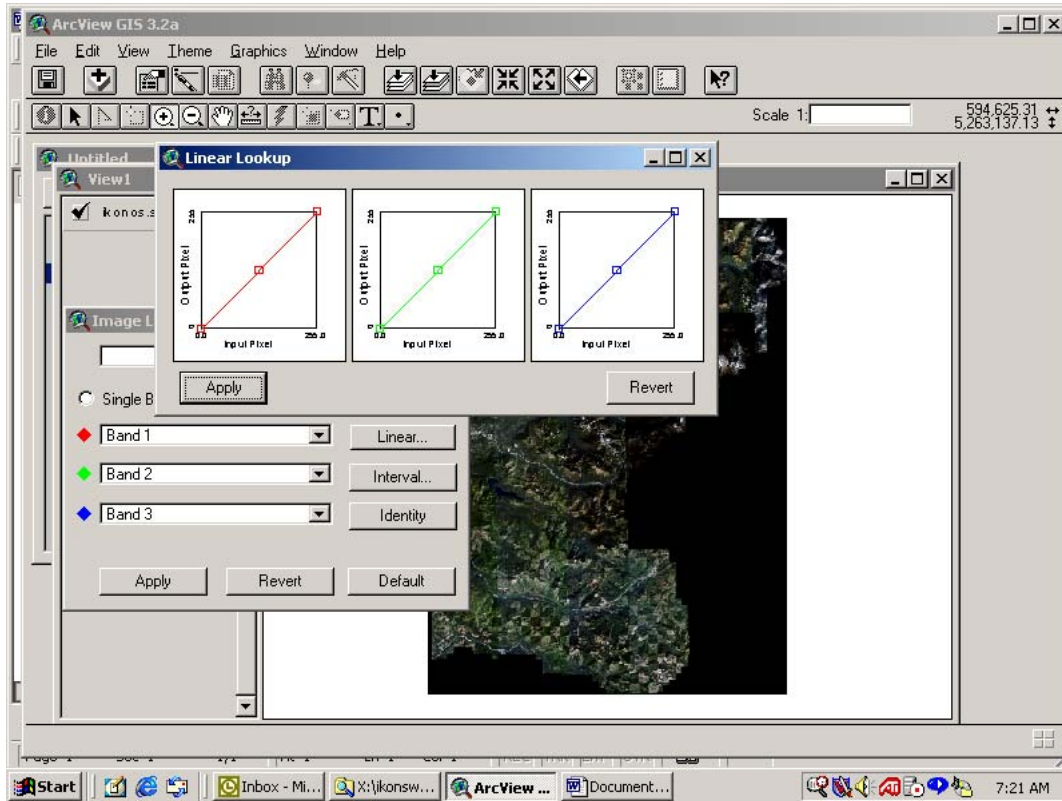
Some of the MrSid image mosaics appear darker than the individual tiled imagery. This may make the imagery less useful for most applications, but because the mosaic is a single file it is relatively easy for ArcView users to 'lighten' the imagery so that its appearance is more pleasing and useful. This technique can actually be applied to any imagery used in ArcView. This process is not exacting and may take a practice run or two. However whatever adjustments you make will be preserved when you save your ArcView project.

Add the MrSid mosaic according to the instructions given above.

If the image appears too dark, double-click on the image name in the table of contents to open the Image Legend Editor.

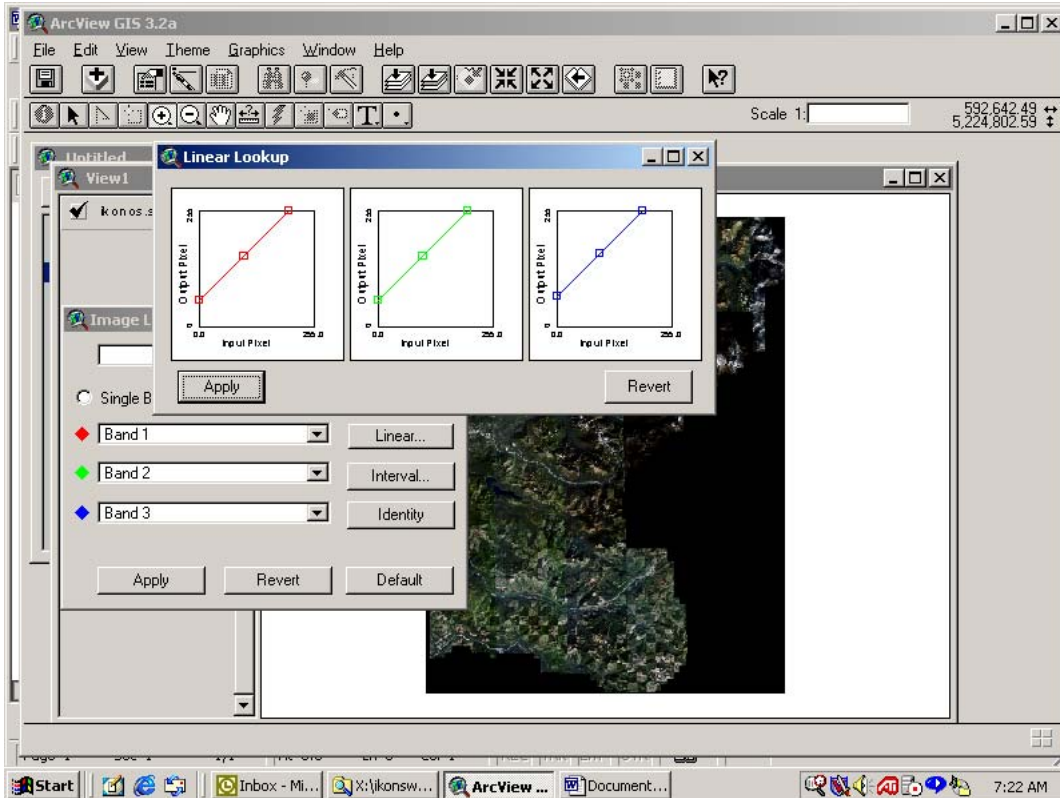


Next single click on the 'Linear..' button on the right side of the Dialog box to bring up the 'Linear Lookup' dialog.



The 'Linear Lookup' dialog displays a color lookup graph for each of the Red, Green and Blue display bands for the imagery. Although you are free to experiment with adjusting the bands independently of one another, adjusting each lookup approximately the same amount will provide the most consistent results.

For each lookup box: use your cursor to 'grab' the 'handle' mid-way along the colored line that runs from the lower left-hand corner of each box to the upper left-hand corner of each box. With the handle 'grabbed' move the colored line upward to the approximate position indicated below. Try to keep the new position of the line approximately parallel to the original orientation of the line. The exact final location is not that critical as it will vary for different MrSid mosaics. However moving the line to this approximate position will stretch the output pixel values causing the display to lighten noticeably.



When you have the colored line adjusted for each box, click on the 'Apply' button on the 'Linear Lookup' and also click the 'Apply' button on the 'Image Legend Editor' dialog box. This will commit the setting changes to your image and your ArcView project. To dismiss the two dialog boxes, close the dialogs by clicking on the 'X' in the upper right-hand corner of each dialog box. Your MrSid image should now have a brighter, lighter appearance to it.