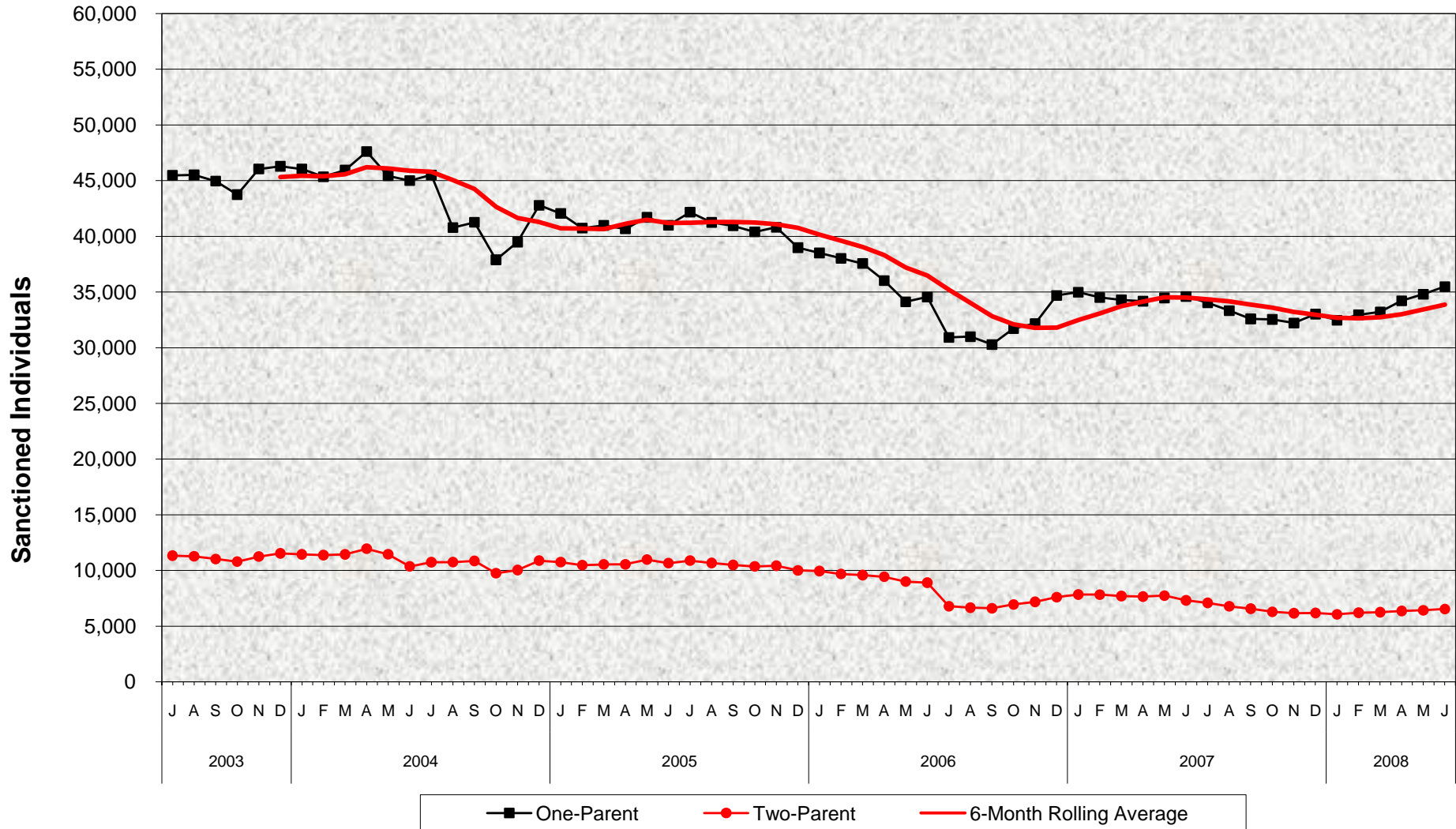


CalWORKs Welfare-to-Work Program Two-Parent and One-Parent^{a/} Sanctions July 2003 - June 2008



^{a/} One-Parent also known as All Other.

**CalWORKs Welfare-to-Work Program
Two-Parent and One-Parent^{a/} Sanctions
July 2003 - June 2008**

MONTHLY PERCENT CHANGE

FY		Jul	% Chg	Aug	% Chg	Sep	% Chg	Oct	% Chg	Nov	% Chg	Dec	% Chg	Jan	% Chg	Feb	% Chg	Mar	% Chg	Apr	% Chg	May	% Chg	Jun	% Chg
03/04	Total	56,793		56,780	0.0%	55,978	-1.4%	54,531	-2.6%	57,288	5.1%	57,811	0.9%	57,473	-0.6%	56,715	-1.3%	57,396	1.2%	59,547	3.7%	56,874	-4.5%	55,353	-2.7%
	1 Parent	45,468		45,510	0.1%	44,954	-1.2%	43,744	-2.7%	46,040	5.2%	46,280	0.5%	46,030	-0.5%	45,344	-1.5%	45,956	1.3%	47,602	3.6%	45,423	-4.6%	44,992	-0.9%
	2 Parent	11,325		11,270	-0.5%	11,024	-2.2%	10,787	-2.1%	11,248	4.3%	11,531	2.5%	11,443	-0.8%	11,371	-0.6%	11,440	0.6%	11,945	4.4%	11,451	-4.1%	10,361	-9.5%
04/05	Total	56,236	1.6%	51,521	-8.4%	52,104	1.1%	47,638	-8.6%	49,503	3.9%	53,658	8.4%	52,794	-1.6%	51,201	-3.0%	51,517	0.6%	51,214	-0.6%	52,670	2.8%	51,645	-1.9%
	1 Parent	45,503	1.1%	40,777	-10.4%	41,253	1.2%	37,888	-8.2%	39,472	4.2%	42,781	8.4%	42,046	-1.7%	40,732	-3.1%	40,977	0.6%	40,666	-0.8%	41,700	2.5%	40,986	-1.7%
	2 Parent	10,733	3.6%	10,744	0.1%	10,851	1.0%	9,750	-10.1%	10,031	2.9%	10,877	8.4%	10,748	-1.2%	10,469	-2.6%	10,540	0.7%	10,548	0.1%	10,970	4.0%	10,659	-2.8%
05/06	Total	53,035	2.7%	51,911	-2.1%	51,418	-0.9%	50,750	-1.3%	51,229	0.9%	48,978	-4.4%	48,447	-1.1%	47,695	-1.6%	47,139	-1.2%	45,450	-3.6%	43,111	-5.1%	43,443	0.8%
	1 Parent	42,157	2.9%	41,243	-2.2%	40,933	-0.8%	40,389	-1.3%	40,809	1.0%	38,976	-4.5%	38,504	-1.2%	38,014	-1.3%	37,557	-1.2%	36,019	-4.1%	34,113	-5.3%	34,547	1.3%
	2 Parent	10,878	2.1%	10,668	-1.9%	10,485	-1.7%	10,361	-1.2%	10,420	0.6%	10,002	-4.0%	9,943	-0.6%	9,681	-2.6%	9,582	-1.0%	9,431	-1.6%	8,998	-4.6%	8,896	-1.1%
06/07	Total	37,693	-13.2%	37,639	-0.1%	36,884	-2.0%	38,645	4.8%	39,339	1.8%	42,282	7.5%	42,804	1.2%	42,317	-1.1%	41,985	-0.8%	41,821	-0.4%	42,199	0.9%	41,900	-0.7%
	1 Parent	30,914	-10.5%	30,987	0.2%	30,284	-2.3%	31,713	4.7%	32,166	1.4%	34,682	7.8%	34,972	0.8%	34,497	-1.4%	34,288	-0.6%	34,169	-0.3%	34,465	0.9%	34,590	0.4%
	2 Parent	6,779	-23.8%	6,652	-1.9%	6,600	-0.8%	6,932	5.0%	7,173	3.5%	7,600	6.0%	7,832	3.1%	7,820	-0.2%	7,697	-1.6%	7,652	-0.6%	7,734	1.1%	7,310	-5.5%
07/08	Total	41,113	-1.9%	40,091	-2.5%	39,141	-2.4%	38,817	-0.8%	38,361	-1.2%	39,186	2.2%	38,516	-1.7%	39,142	1.6%	39,447	0.8%	40,566	2.8%	41,202	1.6%	42,002	1.9%
	1 Parent	34,026	-1.6%	33,321	-2.1%	32,578	-2.2%	32,537	-0.1%	32,207	-1.0%	33,010	2.5%	32,461	-1.7%	32,942	1.5%	33,207	0.8%	34,207	3.0%	34,791	1.7%	35,475	2.0%
	2 Parent	7,087	-3.1%	6,770	-4.5%	6,563	-3.1%	6,280	-4.3%	6,154	-2.0%	6,176	0.4%	6,055	-2.0%	6,200	2.4%	6,240	0.6%	6,359	1.9%	6,411	0.8%	6,527	1.8%

TRENDS

- The number of CalWORKs adults sanctioned for not participating in the CalWORKs Welfare-to-Work Program increased 1.9% from May 2008 to June 2008.
 - 2.0% increase in One-Parent sanctions
 - 1.8% increase in Two-Parent sanctions
- The number of CalWORKs adults sanctioned for not participating in the CalWORKs Welfare-to-Work Program increased 0.2% between June 2007 and June 2008.
 - 2.6% increase in One-Parent sanctions
 - 10.7% decrease in Two-Parent sanctions

a/ One-Parent also known as All Other.