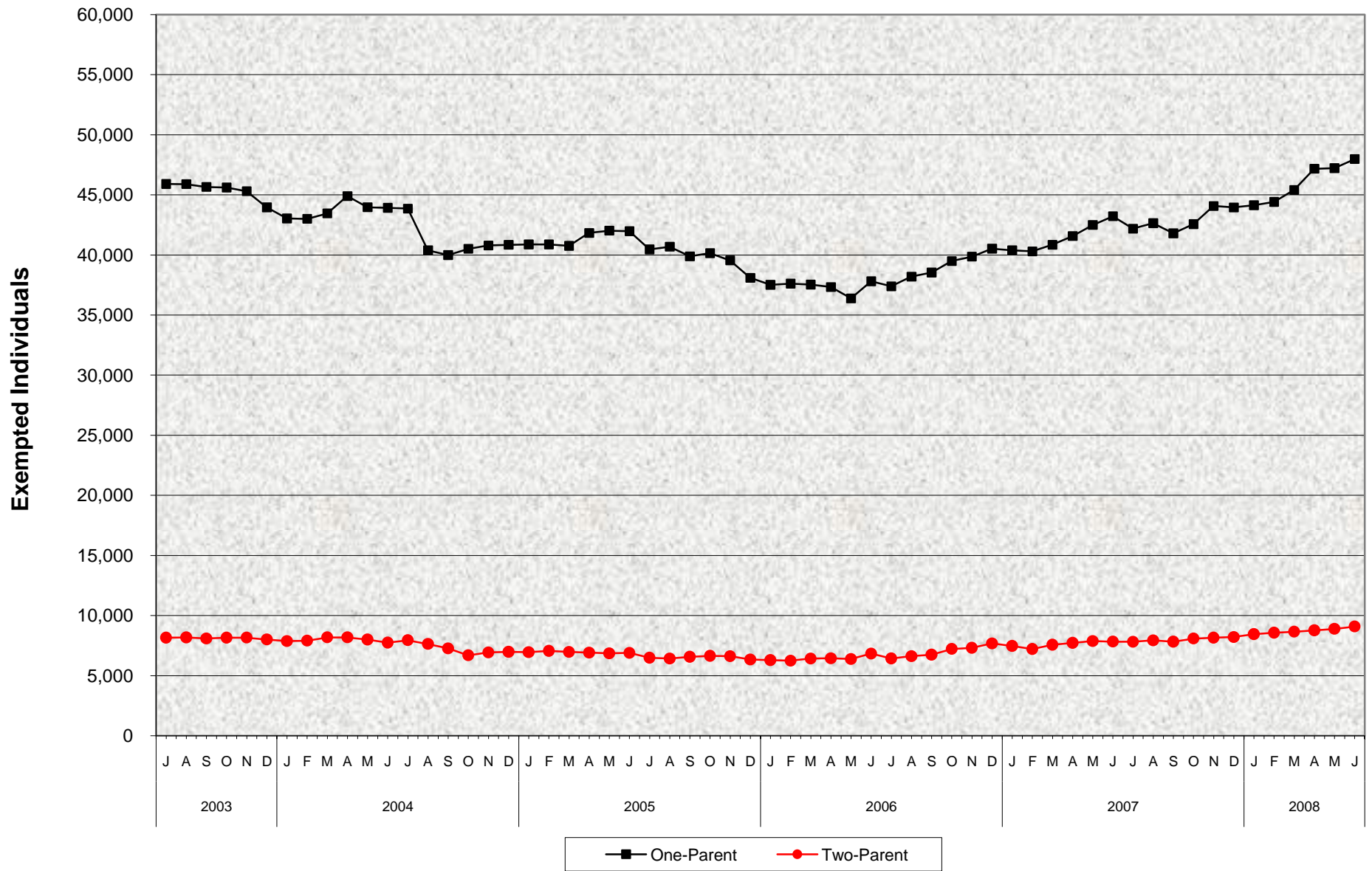


CalWORKs Welfare-to-Work Program Two-Parent and One-Parent^{a/} Exemptions July 2003 - June 2008



^{a/} One-Parent also known as All Other.

CalWORKs Welfare-to-Work Program Two-Parent and One-Parent^{a/} Exemptions July 2003 - June 2008

MONTHLY PERCENT CHANGE

FY		Jul	% Chg	Aug	% Chg	Sep	% Chg	Oct	% Chg	Nov	% Chg	Dec	% Chg	Jan	% Chg	Feb	% Chg	Mar	% Chg	Apr	% Chg	May	% Chg	Jun	% Chg
03/04	Total	54,065		54,073	0.0%	53,753	-0.6%	53,761	0.0%	53,461	-0.6%	51,957	-2.8%	50,907	-2.0%	50,914	0.0%	51,640	1.4%	53,080	2.8%	51,964	-2.1%	51,662	-0.6%
	1 Parent	45,908		45,898	0.0%	45,662	-0.5%	45,608	-0.1%	45,303	-0.7%	43,956	-3.0%	43,036	-2.1%	43,005	-0.1%	43,457	1.1%	44,898	3.3%	43,969	-2.1%	43,918	-0.1%
	2 Parent	8,157		8,175	0.0%	8,091	0.0%	8,153	0.0%	8,158	0.1%	8,001	-1.9%	7,871	-1.6%	7,909	0.5%	8,183	3.5%	8,182	0.0%	7,995	-2.3%	7,744	-3.1%
04/05	Total	51,802	0.3%	48,018	-7.3%	47,258	-1.6%	47,195	-0.1%	47,714	1.1%	47,822	0.2%	47,819	0.0%	47,928	0.2%	47,724	-0.4%	48,740	2.1%	48,872	0.3%	48,865	0.0%
	1 Parent	43,855	-0.1%	40,388	-7.9%	39,994	-1.0%	40,507	1.3%	40,789	0.7%	40,843	0.1%	40,872	0.1%	40,873	0.0%	40,759	-0.3%	41,829	2.6%	42,020	0.5%	41,976	-0.1%
	2 Parent	7,947	2.6%	7,630	-4.0%	7,264	-4.8%	6,688	-7.9%	6,925	3.5%	6,979	0.8%	6,947	-0.5%	7,055	1.6%	6,965	-1.3%	6,911	-0.8%	6,852	-0.9%	6,889	0.5%
05/06	Total	46,947	-3.9%	47,100	0.3%	46,448	-1.4%	46,792	0.7%	46,154	-1.4%	44,435	-3.7%	43,804	-1.4%	43,854	0.1%	43,957	0.2%	43,769	-0.4%	42,763	-2.3%	44,642	4.4%
	1 Parent	40,464	-3.6%	40,685	0.5%	39,885	-2.0%	40,147	0.7%	39,544	-1.5%	38,090	-3.7%	37,513	-1.5%	37,609	0.3%	37,534	-0.2%	37,326	-0.6%	36,388	-2.5%	37,807	3.9%
	2 Parent	6,483	-5.9%	6,415	-1.0%	6,563	2.3%	6,645	1.2%	6,610	-0.5%	6,345	-4.0%	6,291	-0.9%	6,245	-0.7%	6,423	2.9%	6,443	0.3%	6,375	-1.1%	6,835	7.2%
06/07	Total	43,813	-1.9%	44,801	2.3%	45,277	1.1%	46,706	3.2%	47,167	1.0%	48,195	2.2%	47,858	-0.7%	47,516	-0.7%	48,409	1.9%	49,289	1.8%	50,365	2.2%	51,050	1.4%
	1 Parent	37,386	-1.1%	38,189	2.1%	38,532	0.9%	39,488	2.5%	39,860	0.9%	40,517	1.6%	40,390	-0.3%	40,300	-0.2%	40,846	1.4%	41,568	1.8%	42,492	2.2%	43,223	1.7%
	2 Parent	6,427	-6.0%	6,612	2.9%	6,745	2.0%	7,218	7.0%	7,307	1.2%	7,678	5.1%	7,468	-2.7%	7,216	-3.4%	7,563	4.8%	7,721	2.1%	7,873	2.0%	7,827	-0.6%
07/08	Total	50,002	-2.1%	50,576	1.1%	49,616	-1.9%	50,651	2.1%	52,225	3.1%	52,162	-0.1%	52,585	0.8%	52,982	0.8%	54,062	2.0%	55,940	3.5%	56,115	0.3%	57,057	1.7%
	1 Parent	42,186	-2.4%	42,645	1.1%	41,795	-2.0%	42,566	1.8%	44,072	3.5%	43,954	-0.3%	44,136	0.4%	44,415	0.6%	45,408	2.2%	47,176	3.9%	47,222	0.1%	47,975	1.6%
	2 Parent	7,816	-0.1%	7,931	1.5%	7,821	-1.4%	8,085	3.4%	8,153	0.8%	8,208	0.7%	8,449	2.9%	8,567	1.4%	8,654	1.0%	8,764	1.3%	8,893	1.5%	9,082	2.1%

TRENDS

- The number of CalWORKs adults exempted from participating in the CalWORKs Welfare-to-Work Program increased 1.7% from May 2008 to June 2008.
 - 1.6% increase in One-Parent exemptions
 - 2.1% increase in Two-Parent exemptions
- The number of CalWORKs adults exempted from participating in the CalWORKs Welfare-to-Work Program increased 11.8% from June 2007 to June 2008.
 - 11.0% increase in One-Parent exemptions
 - 16.0% increase in Two-Parent exemptions

a/ One-Parent also known as All Other.