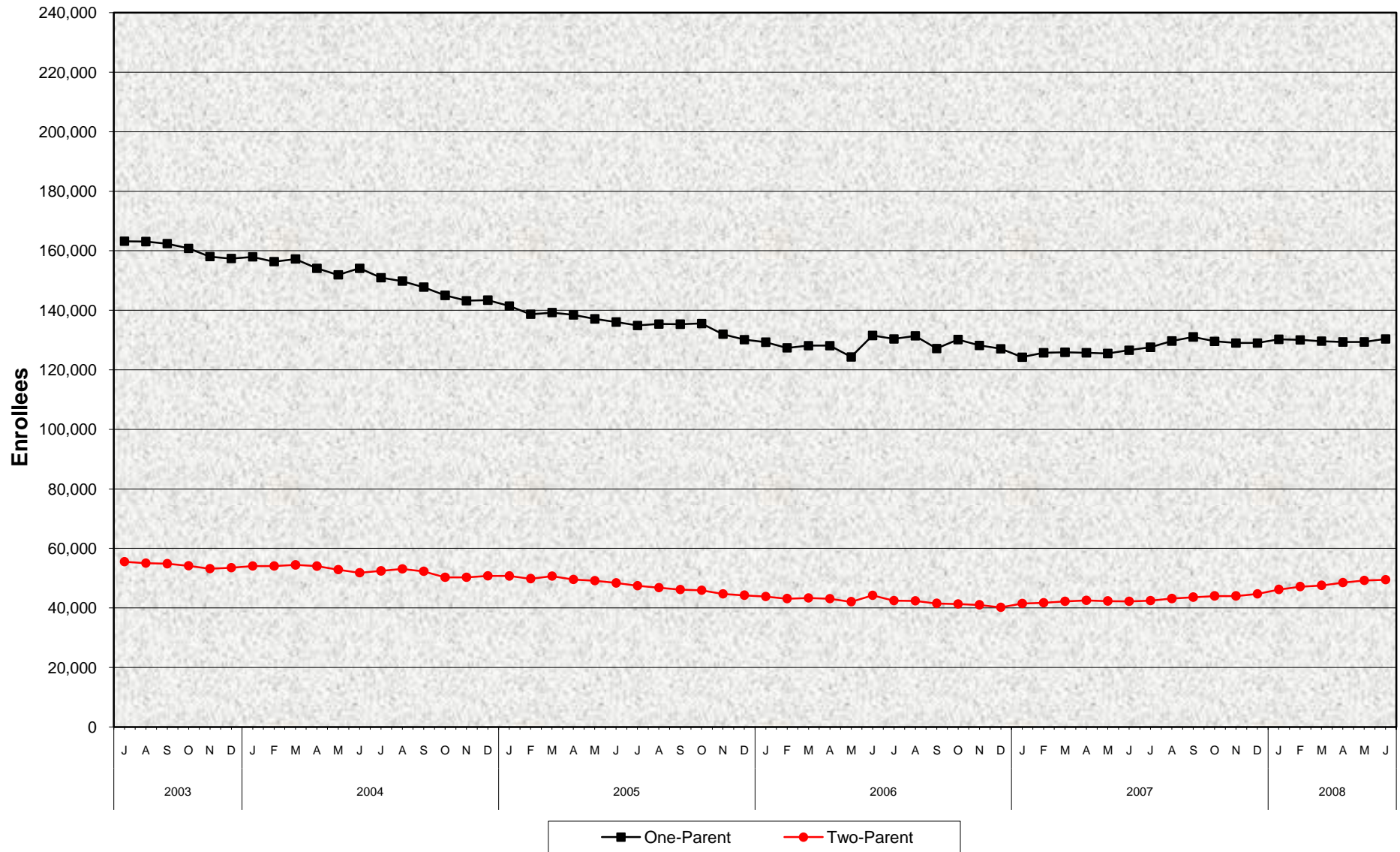


CalWORKs Welfare-to-Work Program Two-Parent and One-Parent^{a/} Enrollees July 2003 - June 2008



^{a/} One-Parent also known as All Other

**CalWORKs Welfare-to-Work Program
Two-Parent and One-Parent^{a/} Enrollees
July 2003 - June 2008**

MONTHLY PERCENT CHANGE

FY		Jul	% Chg	Aug	% Chg	Sep	% Chg	Oct	% Chg	Nov	% Chg	Dec	% Chg	Jan	% Chg	Feb	% Chg	Mar	% Chg	Apr	% Chg	May	% Chg	Jun	% Chg
03/04	Total	218,715		218,140	-0.3%	217,220	-0.4%	214,993	-1.0%	211,251	-1.7%	210,909	-0.2%	211,455	0.3%	212,044	0.3%	210,800	-0.6%	208,152	-1.3%	204,771	-1.6%	205,943	0.6%
	1 Parent	163,193		163,075	-0.2%	162,382	-0.4%	160,813	-1.0%	158,049	-1.7%	157,392	-0.4%	157,392	0.0%	157,976	0.4%	156,361	-1.0%	154,117	-1.4%	151,911	-1.4%	154,112	1.4%
	2 Parent	55,522		55,065	-0.8%	54,838	-0.4%	54,180	-1.2%	53,202	-1.8%	53,517	0.6%	54,063	1.0%	54,068	0.0%	54,439	0.7%	54,035	-0.7%	52,860	-2.2%	51,831	-1.9%
04/05	Total	203,394	-1.2%	202,898	-0.2%	200,109	-1.4%	195,295	-2.4%	193,490	-0.9%	194,156	0.3%	192,190	-1.0%	188,513	-1.9%	189,906	0.7%	188,008	-1.0%	186,293	-0.9%	184,470	-1.0%
	1 Parent	150,971	-2.0%	149,799	-0.8%	147,798	-1.3%	145,019	-1.9%	143,216	-1.2%	143,400	0.1%	141,461	-1.4%	138,682	-2.0%	139,234	0.4%	138,467	-0.6%	137,135	-1.0%	136,082	-0.8%
	2 Parent	52,423	1.1%	53,099	1.3%	52,311	-1.5%	50,276	-3.9%	50,274	0.0%	50,756	1.0%	50,729	-0.1%	49,831	-1.8%	50,672	1.7%	49,541	-2.2%	49,158	-0.8%	48,388	-1.6%
05/06	Total	182,379	-1.1%	182,211	-0.1%	181,511	-0.4%	181,451	0.0%	176,703	-2.6%	174,418	-1.3%	173,157	-0.7%	170,518	-1.5%	171,475	0.6%	171,246	-0.1%	166,429	-2.8%	175,759	5.6%
	1 Parent	134,910	-0.9%	135,397	0.4%	135,355	0.0%	135,545	0.1%	131,976	-2.6%	130,153	-1.4%	129,313	-0.6%	127,380	-1.5%	128,156	0.6%	128,137	0.0%	124,344	-3.0%	131,548	5.8%
	2 Parent	47,469	-1.9%	46,814	-1.4%	46,156	-1.4%	45,906	-0.5%	44,727	-2.6%	44,265	-1.0%	43,844	-1.0%	43,138	-1.6%	43,319	0.4%	43,109	-0.5%	42,085	-2.4%	44,211	5.1%
06/07	Total	172,843	-1.7%	173,770	0.5%	168,678	-2.9%	171,487	1.7%	169,246	-1.3%	167,286	-1.2%	165,742	-0.9%	167,493	1.1%	168,093	0.4%	168,307	0.1%	167,841	-0.3%	168,810	0.6%
	1 Parent	130,405	-0.9%	131,415	0.8%	127,148	-3.2%	130,178	2.4%	128,212	-1.5%	127,083	-0.9%	124,274	-2.2%	125,756	1.2%	125,905	0.1%	125,748	-0.1%	125,519	-0.2%	126,580	0.8%
	2 Parent	42,438	-4.0%	42,355	-0.2%	41,530	-1.9%	41,309	-0.5%	41,034	-0.7%	40,203	-2.0%	41,468	3.1%	41,737	0.6%	42,188	1.1%	42,559	0.9%	42,322	-0.6%	42,230	-0.2%
07/08	Total	170,057	0.7%	172,843	1.6%	174,681	1.1%	173,636	-0.6%	173,046	-0.3%	173,757	0.4%	176,461	1.6%	177,250	0.4%	177,212	0.0%	177,904	0.4%	178,647	0.4%	179,849	0.7%
	1 Parent	127,612	0.8%	129,693	1.6%	131,065	1.1%	129,604	-1.1%	129,021	-0.4%	129,032	0.0%	130,254	0.9%	130,086	-0.1%	129,642	-0.3%	129,385	-0.2%	129,394	0.0%	130,376	0.8%
	2 Parent	42,445	0.5%	43,150	1.7%	43,616	1.1%	44,032	1.0%	44,025	0.0%	44,725	1.6%	46,207	3.3%	47,164	2.1%	47,570	0.9%	48,519	2.0%	49,253	1.5%	49,473	0.4%

TRENDS

- The number of CalWORKs adults participating in CalWORKs increased 0.7% between May 2008 and June 2008.
 - 0.8% increase in One-Parent enrollees
 - 0.4% increase in Two-Parent enrollees
- The number of CalWORKs adults participating in CalWORKs increased 6.5% between June 2007 and June 2008.
 - 3.0% increase in One-Parent enrollees
 - 17.2% increase in Two-Parent enrollees

a/ One-Parent also known as All Other.