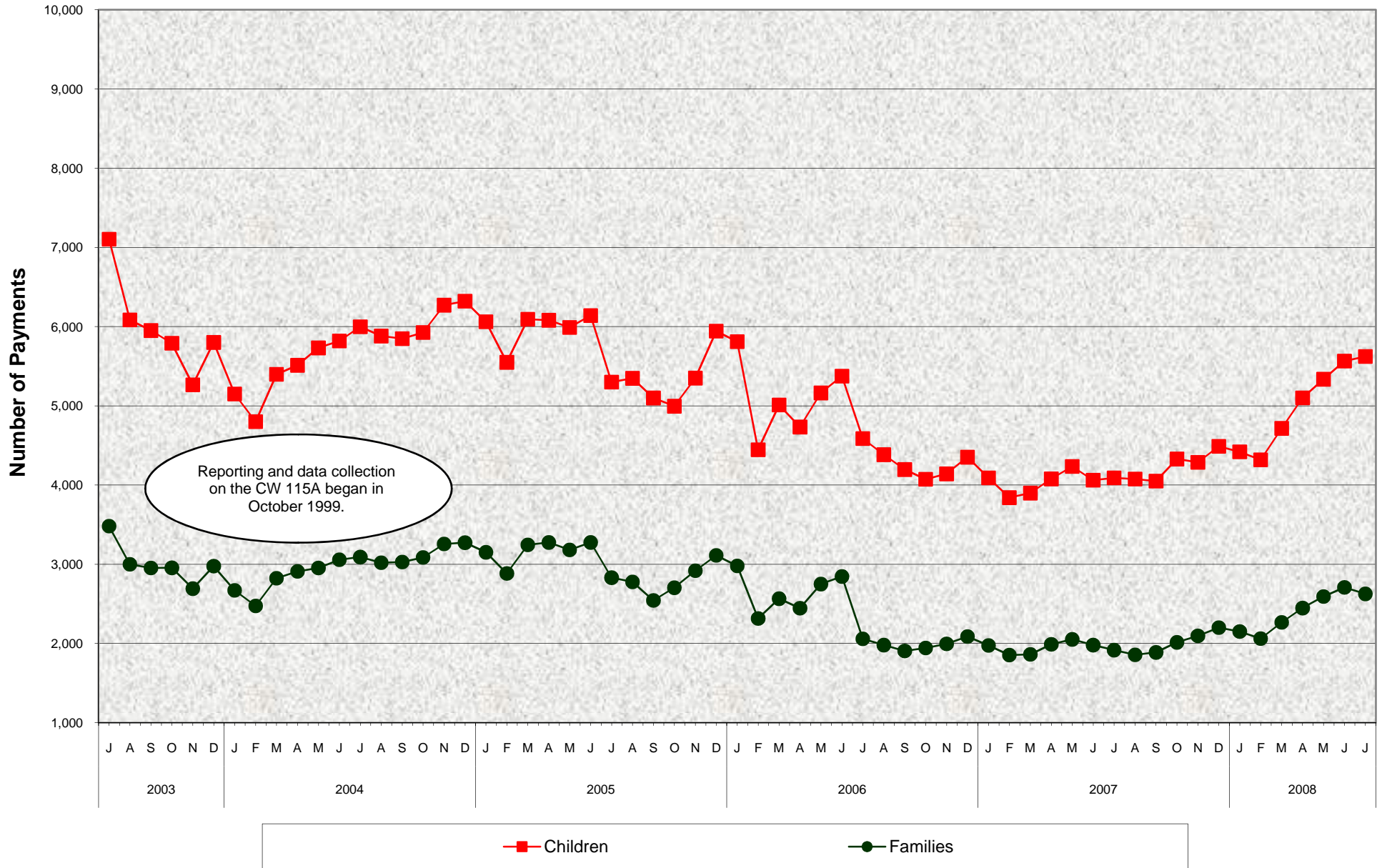


Stage 1 Child Care - Two Parent Families Number of Payments Issued to Children and Families July 2003 - July 2008



**Stage 1 Child Care - Two Parent Families
Number of Payments Issued to Children and Families
July 2003 - July 2008**

MONTHLY PERCENT CHANGE

FY		Jul	% Chg	Aug	% Chg	Sep	% Chg	Oct	% Chg	Nov	% Chg	Dec	% Chg	Jan	% Chg	Feb	% Chg	Mar	% Chg	Apr	% Chg	May	% Chg	Jun	% Chg
03/04	Children	7,105	8.9%	6,085	-14.4%	5,951	-2.2%	5,791	-2.7%	5,266	-9.1%	5,801	10.2%	5,151	-11.2%	4,802	-6.8%	5,399	12.4%	5,513	2.1%	5,732	4.0%	5,820	1.5%
	Families	3,483	9.9%	3,000	-13.9%	2,954	-1.5%	2,956	0.1%	2,693	-8.9%	2,978	10.6%	2,671	-10.3%	2,476	-7.3%	2,824	14.1%	2,910	3.0%	2,955	1.5%	3,058	3.5%
04/05	Children	5,998	3.1%	5,882	-1.9%	5,849	-0.6%	5,927	1.3%	6,272	5.8%	6,322	0.8%	6,063	-4.1%	5,550	-8.5%	6,094	9.8%	6,081	-0.2%	5,991	-1.5%	6,141	2.5%
	Families	3,091	1.1%	3,021	-2.3%	3,029	0.3%	3,087	1.9%	3,258	5.5%	3,273	0.5%	3,152	-3.7%	2,885	-8.5%	3,245	12.5%	3,276	1.0%	3,182	-2.9%	3,276	3.0%
05/06	Children	5,301	-13.7%	5,348	0.9%	5,100	-4.6%	4,996	-2.0%	5,351	7.1%	5,945	11.1%	5,811	-2.3%	4,446	-23.5%	5,012	12.7%	4,733	-5.6%	5,163	9.1%	5,376	4.1%
	Families	2,832	-13.6%	2,778	-1.9%	2,545	-8.4%	2,705	6.3%	2,919	7.9%	3,113	6.6%	2,980	-4.3%	2,316	-22.3%	2,566	10.8%	2,447	-4.6%	2,751	12.4%	2,846	3.5%
06/07	Children	4,588	-14.7%	4,384	-4.4%	4,197	-4.3%	4,074	-2.9%	4,142	1.7%	4,352	5.1%	4,091	-6.0%	3,842	-6.1%	3,899	1.5%	4,078	4.6%	4,236	3.9%	4,062	-4.1%
	Families	2,060	-27.6%	1,980	-3.9%	1,907	-3.7%	1,944	1.9%	1,996	2.7%	2,088	4.6%	1,975	-5.4%	1,855	-6.1%	1,864	0.5%	1,990	6.8%	2,052	3.1%	1,980	-3.5%
07/08	Children	4,091	0.7%	4,077	-0.3%	4,051	-0.6%	4,329	6.9%	4,288	-0.9%	4,489	4.7%	4,420	-1.5%	4,319	-2.3%	4,716	9.2%	5,101	8.2%	5,337	4.6%	5,566	4.3%
	Families	1,917	-3.2%	1,858	-3.1%	1,888	1.6%	2,015	6.7%	2,098	4.1%	2,201	4.9%	2,151	-2.3%	2,063	-4.1%	2,267	9.9%	2,448	8.0%	2,593	5.9%	2,708	4.4%
08/09	Children	5,624	1.0%																						
	Families	2,627	-3.0%																						

TRENDS

- **Payments to Children increased 1.0% between June 2008 and July 2008**
Children payments increased 37.5% between July 2007 and July 2008
- **Payments to Families decreased -3.0% between June 2008 and July 2008**
Family payments increased 37.0% between July 2007 and July 2008