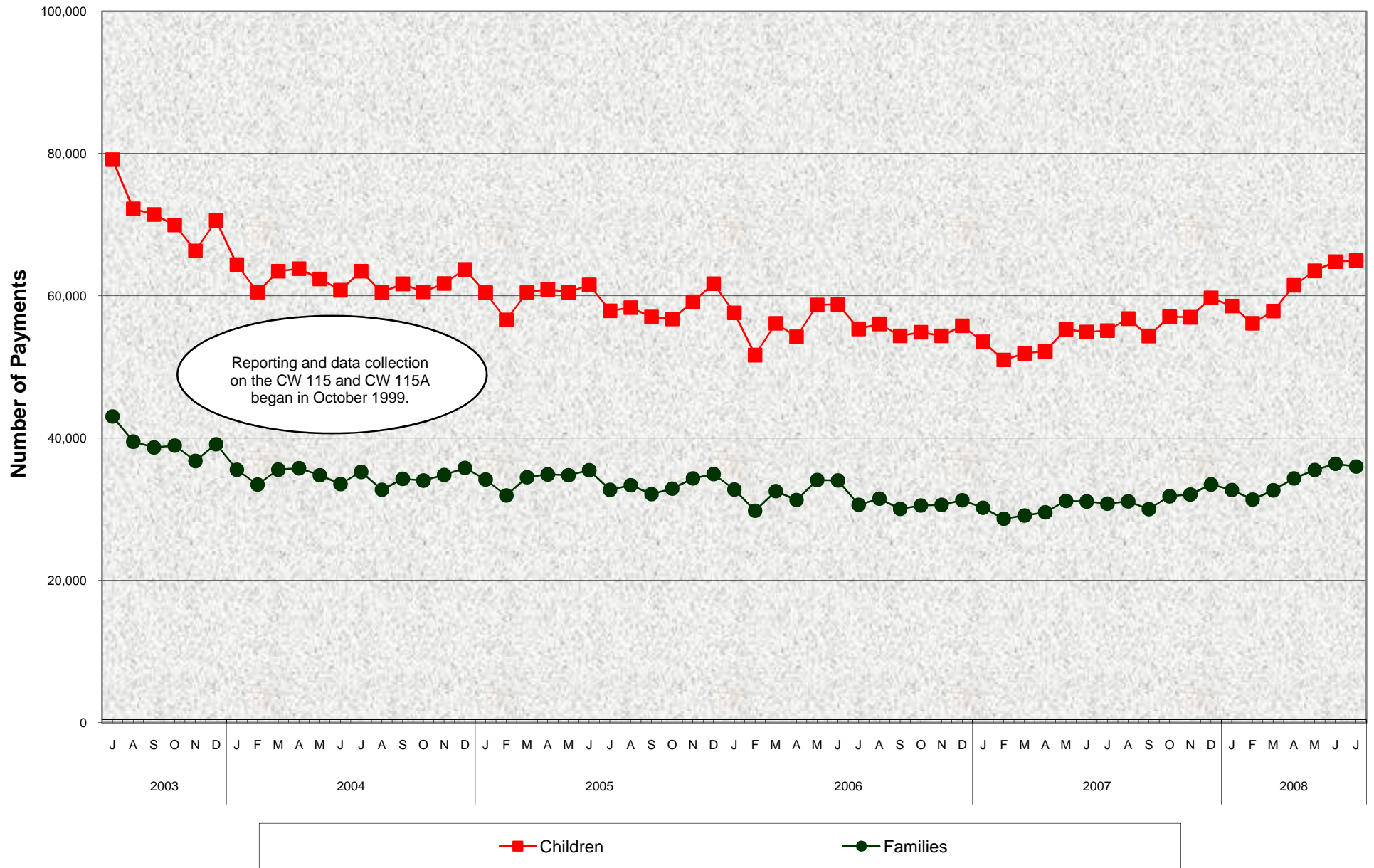


### Stage 1 Child Care - Total (CalWORKs Families and Two Parent Families Combined) Number of Payments Issued to Children and Families July 2003 - July 2008



**Stage 1 Child Care - Total (CalWORKs Families and Two Parent Families Combined)**  
**Number of Payments Issued to Children and Families**  
**July 2003 - July 2008**

**MONTHLY PERCENT CHANGE**

FY		Jul	% Chg	Aug	% Chg	Sep	% Chg	Oct	% Chg	Nov	% Chg	Dec	% Chg	Jan	% Chg	Feb	% Chg	Mar	% Chg	Apr	% Chg	May	% Chg	Jun	% Chg
03/04	Children	79,145	4.1%	72,229	-8.7%	71,429	-1.1%	69,959	-2.1%	66,319	-5.2%	70,592	6.4%	64,405	-8.8%	60,518	-6.0%	63,471	4.9%	63,827	0.6%	62,379	-2.3%	60,796	-2.5%
	Families	43,044	3.1%	39,512	-8.2%	38,691	-2.1%	38,955	0.7%	36,789	-5.6%	39,144	6.4%	35,550	-9.2%	33,472	-5.8%	35,576	6.3%	35,770	0.5%	34,801	-2.7%	33,556	-3.6%
04/05	Children	63,461	4.4%	60,479	-4.7%	61,694	2.0%	60,554	-1.8%	61,730	1.9%	63,704	3.2%	60,463	-5.1%	56,613	-6.4%	60,451	6.8%	60,920	0.8%	60,496	-0.7%	61,540	1.7%
	Families	35,255	5.1%	32,750	-7.1%	34,270	4.6%	34,034	-0.7%	34,832	2.3%	35,807	2.8%	34,174	-4.6%	31,948	-6.5%	34,497	8.0%	34,907	1.2%	34,785	-0.3%	35,500	2.1%
05/06	Children	57,902	-5.9%	58,348	0.8%	57,039	-2.2%	56,755	-0.5%	59,174	4.3%	61,710	4.3%	57,620	-6.6%	51,674	-10.3%	56,137	8.6%	54,239	-3.4%	58,716	8.3%	58,813	0.2%
	Families	32,731	-7.8%	33,373	2.0%	32,134	-3.7%	32,901	2.4%	34,340	4.4%	34,950	1.8%	32,781	-6.2%	29,790	-9.1%	32,550	9.3%	31,293	-3.9%	34,124	9.0%	34,058	-0.2%
06/07	Children	55,359	-5.9%	56,060	1.3%	54,377	-3.0%	54,898	1.0%	54,372	-1.0%	55,780	2.6%	53,545	-4.0%	50,983	-4.8%	51,919	1.8%	52,221	0.6%	55,316	5.9%	54,920	-0.7%
	Families	30,628	-10.1%	31,502	2.9%	30,057	-4.6%	30,533	1.6%	30,620	0.3%	31,278	2.1%	30,208	-3.4%	28,685	-5.0%	29,135	1.6%	29,565	1.5%	31,174	5.4%	31,090	-0.3%
07/08	Children	55,123	0.4%	56,796	3.0%	54,365	-4.3%	57,064	5.0%	56,983	-0.1%	59,718	4.8%	58,562	-1.9%	56,132	-4.1%	57,865	3.1%	61,486	6.3%	63,519	3.3%	64,813	2.0%
	Families	30,801	-0.9%	31,101	1.0%	30,013	-3.5%	31,826	6.0%	32,064	0.7%	33,497	4.5%	32,711	-2.3%	31,357	-4.1%	32,663	4.2%	34,333	5.1%	35,534	3.5%	36,401	2.4%
08/09	Children	64,961	0.2%																						
	Families	36,002	-1.1%																						

**TRENDS**

- **Payments to Children increased 0.2% between June 2008 and July 2008**  
Children payments increased 17.8% between July 2007 and July 2008
- **Payments to Families decreased -1.1% between June 2008 and July 2008**  
Family payments increased 16.9% between July 2007 and July 2008