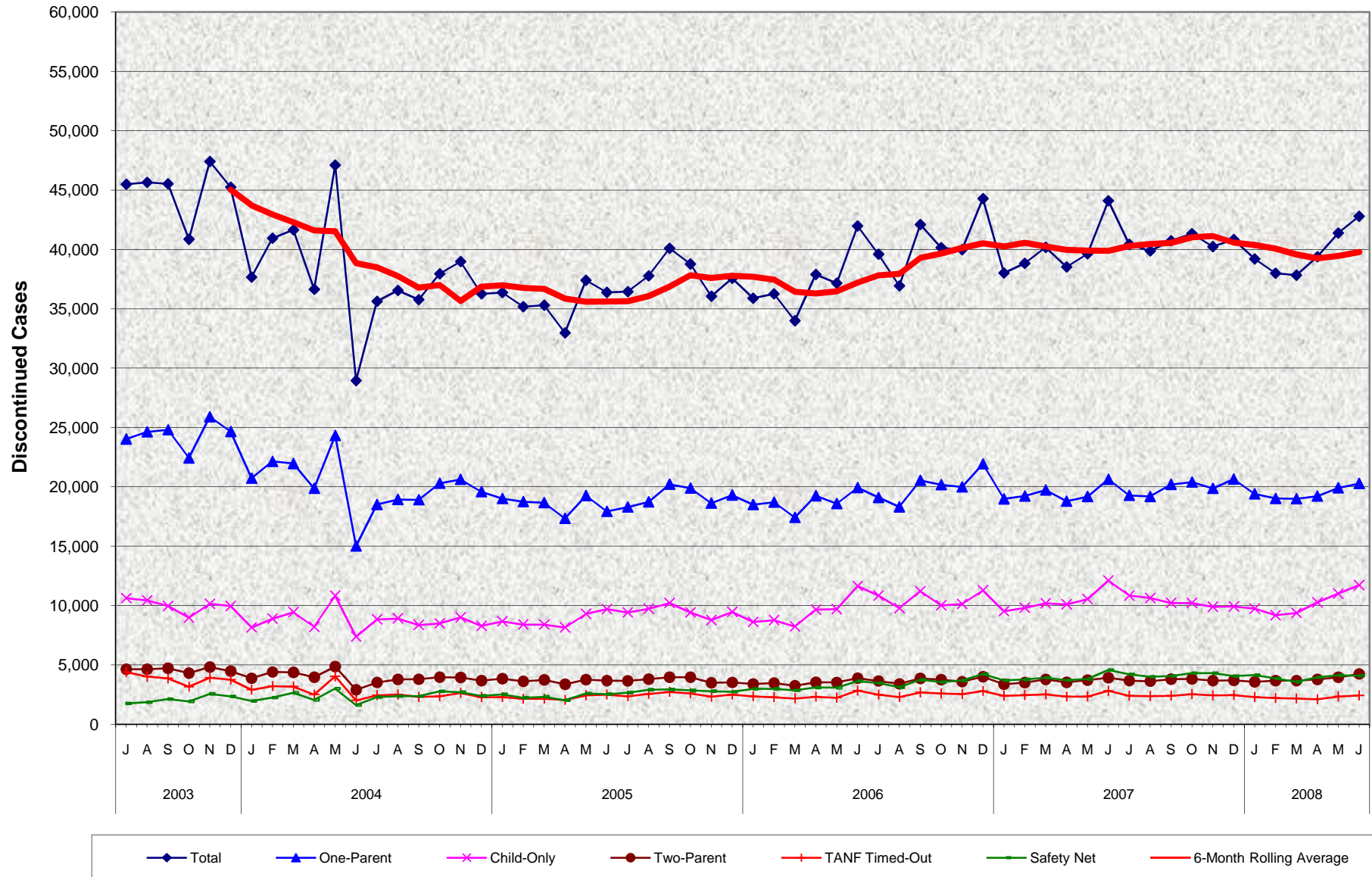


CalWORKs Program Discontinued Cases by Category July 2003 - June 2008



CalWORKs Program Discontinued Cases by Category July 2003 - June 2008

MONTHLY PERCENT CHANGE

FY		Jul	% Chg	Aug	% Chg	Sep	% Chg	Oct	% Chg	Nov	% Chg	Dec	% Chg	Jan	% Chg	Feb	% Chg	Mar	% Chg	Apr	% Chg	May	% Chg	Jun	% Chg
03/04	Total	45,491	-2.6%	45,651	0.4%	45,527	-0.3%	40,867	-10.2%	47,412	16.0%	45,246	-4.6%	37,678	-16.7%	40,951	8.7%	41,647	1.7%	36,646	-12.0%	47,107	28.5%	28,961	-38.5%
	1P	24,041	-2.7%	24,645	2.5%	24,822	0.7%	22,443	-9.6%	25,923	15.5%	24,677	-4.8%	20,735	-16.0%	22,157	6.9%	21,975	-0.8%	19,883	-9.5%	24,334	22.4%	15,021	-38.3%
	CO	10,631	-3.5%	10,445	-1.7%	9,966	-4.6%	8,979	-9.9%	10,147	13.0%	9,964	-1.8%	8,165	-18.1%	8,904	9.1%	9,449	6.1%	8,214	-13.1%	10,839	32.0%	7,387	-31.8%
	2P	4,654	-5.5%	4,655	0.0%	4,727	1.5%	4,326	-8.5%	4,833	11.7%	4,482	-7.3%	3,886	-13.3%	4,416	13.6%	4,377	-0.9%	3,980	-9.1%	4,875	22.5%	2,912	-40.3%
	TO	4,407	3.5%	4,035	-8.4%	3,882	-3.8%	3,179	-18.1%	3,937	23.8%	3,771	-4.2%	2,919	-22.6%	3,217	10.2%	3,190	-0.8%	2,509	-21.3%	4,050	61.4%	2,017	-50.2%
	SN	1,758	-2.2%	1,871	6.4%	2,130	13.8%	1,940	-8.9%	2,572	32.6%	2,352	-8.6%	1,973	-16.1%	2,257	14.4%	2,656	17.7%	2,060	-22.4%	3,009	46.1%	1,624	-46.0%
04/05	Total	35,639	23.1%	36,558	2.6%	35,786	-2.1%	37,952	6.1%	38,976	2.7%	36,276	-6.9%	36,379	0.3%	35,193	-3.3%	35,315	0.3%	32,980	-6.6%	37,407	13.4%	36,391	-2.7%
	1P	18,526	23.3%	18,940	2.2%	18,917	-0.1%	20,313	7.4%	20,642	1.6%	19,590	-5.1%	19,024	-2.9%	18,763	-1.4%	18,685	-0.4%	17,349	-7.2%	19,272	11.1%	17,944	-6.9%
	CO	8,835	19.6%	8,918	0.9%	8,367	-6.2%	8,505	1.6%	9,009	5.9%	8,294	-7.9%	8,673	4.6%	8,409	-3.0%	8,398	-0.1%	8,163	-2.8%	9,311	14.1%	9,702	4.2%
	2P	3,535	21.4%	3,798	7.4%	3,804	0.2%	3,973	4.4%	3,954	-0.5%	3,691	-6.7%	3,856	4.5%	3,626	-6.0%	3,757	3.6%	3,385	-9.9%	3,774	11.5%	3,683	-2.4%
	TO	2,451	21.5%	2,519	2.8%	2,314	-8.1%	2,369	2.4%	2,658	12.2%	2,292	-13.8%	2,296	0.2%	2,152	-6.3%	2,151	0.0%	2,053	-4.6%	2,451	19.4%	2,510	2.4%
	SN	2,292	41.1%	2,383	4.0%	2,384	0.0%	2,792	17.1%	2,713	-2.8%	2,409	-11.2%	2,530	5.0%	2,243	-11.3%	2,324	3.6%	2,030	-12.7%	2,599	28.0%	2,552	-1.8%
05/06	Total	36,452	0.2%	37,771	3.6%	40,095	6.2%	38,777	-3.3%	36,059	-7.0%	37,570	4.2%	35,893	-4.5%	36,274	1.1%	34,000	-6.3%	37,906	11.5%	37,165	-2.0%	41,983	13.0%
	1P	18,306	2.0%	18,743	2.4%	20,230	7.9%	19,907	-1.6%	18,635	-6.4%	19,317	3.7%	18,512	-4.2%	18,718	1.1%	17,430	-6.9%	19,259	10.5%	18,591	-3.5%	19,944	7.3%
	CO	9,426	-2.8%	9,734	3.3%	10,218	5.0%	9,423	-7.8%	8,783	-6.8%	9,471	7.8%	8,626	-8.9%	8,777	1.8%	8,247	-6.0%	9,660	17.1%	9,702	0.4%	11,651	20.1%
	2P	3,674	-0.2%	3,810	3.7%	3,969	4.2%	3,973	0.1%	3,509	-11.7%	3,536	0.8%	3,404	-3.7%	3,491	2.6%	3,266	-6.4%	3,554	8.8%	3,539	-0.4%	3,891	9.9%
	TO	2,372	-5.5%	2,564	8.1%	2,736	6.7%	2,614	-4.5%	2,334	-10.7%	2,501	7.2%	2,360	-5.6%	2,287	-3.1%	2,183	-4.5%	2,327	6.6%	2,248	-3.4%	2,847	26.6%
	SN	2,674	4.8%	2,920	9.2%	2,942	0.8%	2,860	-2.8%	2,798	-2.2%	2,745	-1.9%	2,991	9.0%	3,001	0.3%	2,874	-4.2%	3,106	8.1%	3,085	-0.7%	3,650	18.3%
06/07	Total	39,604	-5.7%	36,948	-6.7%	42,099	13.9%	40,155	-4.6%	39,990	-0.4%	44,284	10.7%	38,016	-14.2%	38,830	2.1%	40,177	3.5%	38,528	-4.1%	39,640	2.9%	44,104	11.3%
	1P	19,116	-4.2%	18,320	-4.2%	20,554	12.2%	20,191	-1.8%	20,005	-0.9%	21,940	9.7%	18,995	-13.4%	19,240	1.3%	19,741	2.6%	18,799	-4.8%	19,191	2.1%	20,646	7.6%
	CO	10,848	-6.9%	9,784	-9.8%	11,211	14.6%	10,023	-10.6%	10,135	1.1%	11,287	11.4%	9,522	-15.6%	9,818	3.1%	10,193	3.8%	10,104	-0.9%	10,551	4.4%	12,112	14.8%
	2P	3,658	-6.0%	3,414	-6.7%	3,873	13.4%	3,772	-2.6%	3,598	-4.6%	4,010	11.5%	3,378	-15.8%	3,522	4.3%	3,789	7.6%	3,549	-6.3%	3,724	4.9%	3,937	5.7%
	TO	2,504	-12.0%	2,304	-8.0%	2,701	17.2%	2,605	-3.6%	2,553	-2.0%	2,812	10.1%	2,408	-14.4%	2,469	2.5%	2,525	2.3%	2,341	-7.3%	2,352	0.5%	2,824	20.1%
	SN	3,478	-4.7%	3,126	-10.1%	3,760	20.3%	3,564	-5.2%	3,699	3.8%	4,235	14.5%	3,713	-12.3%	3,781	1.8%	3,929	3.9%	3,735	-4.9%	3,822	2.3%	4,585	20.0%
07/08	Total	40,440	-8.3%	39,878	-1.4%	40,737	2.2%	41,339	1.5%	40,238	-2.7%	40,834	1.5%	39,201	-4.0%	38,004	-3.1%	37,837	-0.4%	39,391	4.1%	41,397	5.1%	42,798	3.4%
	1P	19,295	-6.5%	19,200	-0.5%	20,214	5.3%	20,412	1.0%	19,883	-2.6%	20,663	3.9%	19,418	-6.0%	19,034	-2.0%	19,001	-0.2%	19,236	1.2%	19,921	3.6%	20,292	1.9%
	CO	10,840	-10.5%	10,644	-1.8%	10,226	-3.9%	10,225	0.0%	9,899	-3.2%	9,929	0.3%	9,743	-1.9%	9,193	-5.6%	9,379	2.0%	10,275	9.6%	11,005	7.1%	11,720	6.5%
	2P	3,685	-6.4%	3,637	-1.3%	3,808	4.7%	3,835	0.7%	3,695	-3.7%	3,710	0.4%	3,585	-3.4%	3,684	2.8%	3,692	0.2%	3,786	2.5%	3,981	5.2%	4,249	6.7%
	TO	2,403	-14.9%	2,381	-0.9%	2,413	1.3%	2,542	5.3%	2,446	-3.8%	2,467	0.9%	2,307	-6.5%	2,221	-3.7%	2,179	-1.9%	2,119	-2.8%	2,350	10.9%	2,436	3.7%
	SN	4,217	-8.0%	4,016	-4.8%	4,076	1.5%	4,325	6.1%	4,315	-0.2%	4,065	-5.8%	4,148	2.0%	3,872	-6.7%	3,586	-7.4%	3,975	10.8%	4,140	4.2%	4,101	-0.9%

TRENDS

- The number of CalWORKs discontinued cases increased 3.4% between May 2008 and June 2008.
- The number of CalWORKs discontinued cases decreased 3.0% between June 2007 and June 2008.