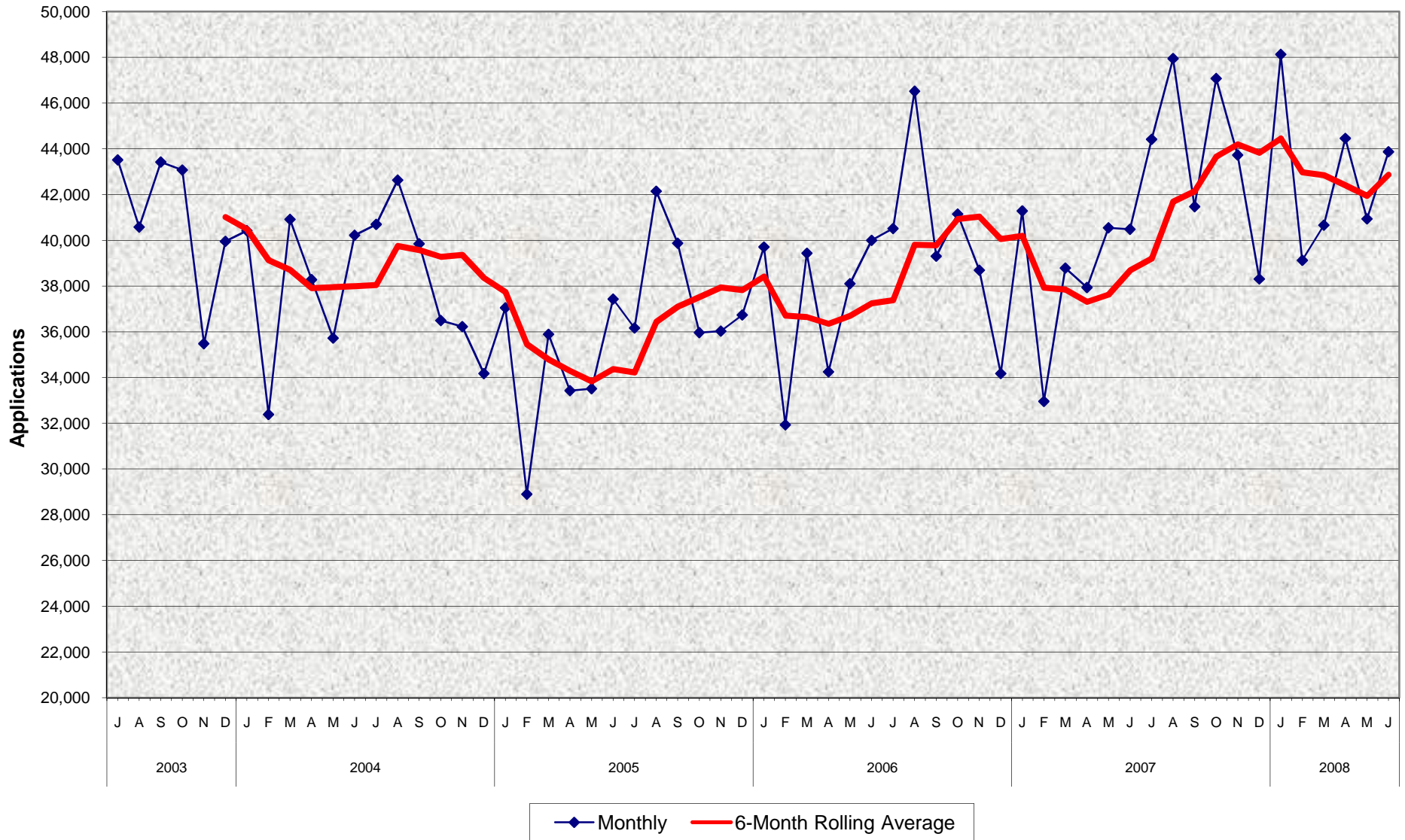


CalWORKs Program Applications Received July 2003 - June 2008



CalWORKs Program Applications Received July 2003 - June 2008

MONTHLY PERCENT CHANGE

FY	Jul	% Chg	Aug	% Chg	Sep	% Chg	Oct	% Chg	Nov	% Chg	Dec	% Chg	Jan	% Chg	Feb	% Chg	Mar	% Chg	Apr	% Chg	May	% Chg	Jun	% Chg
03/04	43,522	14.3%	40,582	-6.8%	43,423	7.0%	43,077	-0.8%	35,488	-17.6%	39,955	12.6%	40,423	1.2%	32,388	-19.9%	40,918	26.3%	38,281	-6.4%	35,726	-6.7%	40,225	12.6%
04/05	40,701	1.2%	42,631	4.7%	39,850	-6.5%	36,495	-8.4%	36,228	-0.7%	34,182	-5.6%	37,054	8.4%	28,902	-22.0%	35,899	24.2%	33,435	-6.9%	33,515	0.2%	37,429	11.7%
05/06	36,165	-3.4%	42,153	16.6%	39,878	-5.4%	35,967	-9.8%	36,034	0.2%	36,739	2.0%	39,712	8.1%	31,936	-19.6%	39,438	23.5%	34,255	-13.1%	38,103	11.2%	40,005	5.0%
06/07	40,518	1.3%	46,516	14.8%	39,303	-15.5%	41,149	4.7%	38,694	-6.0%	34,175	-11.7%	41,284	20.8%	32,962	-20.2%	38,794	17.7%	37,942	-2.2%	40,552	6.9%	40,487	-0.2%
07/08	44,418	9.7%	47,947	7.9%	41,477	-13.5%	47,076	13.5%	43,731	-7.1%	38,312	-12.4%	48,132	25.6%	39,129	-18.7%	40,663	3.9%	44,461	9.3%	40,935	-7.9%	43,872	7.2%

TRENDS

- The number of CalWORKs applications increased 7.2% between May 2008 and June 2008.
- The number of CalWORKs applications increased 8.4% between June 2007 and June 2008.