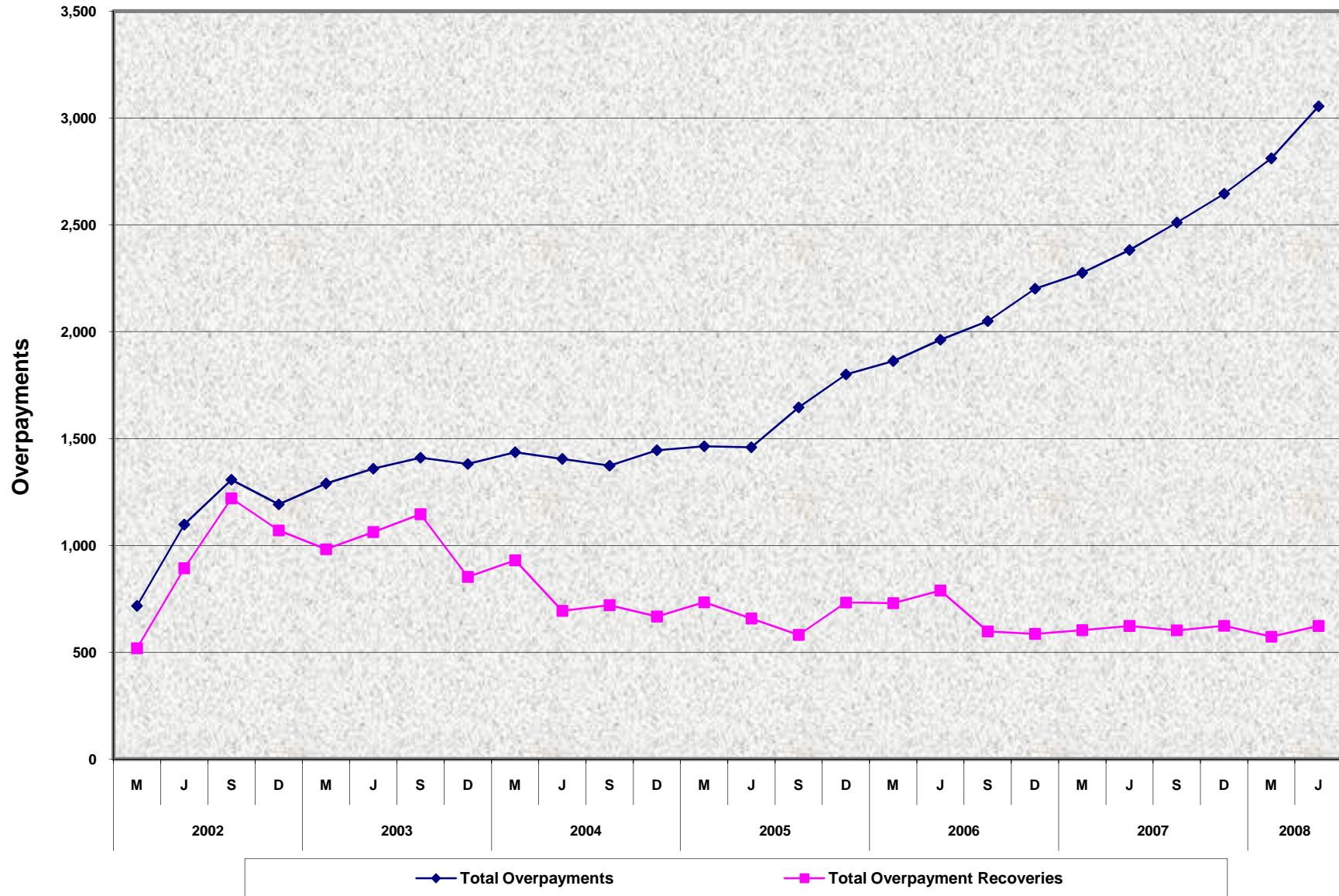


Quarterly Report of Overpayments and Collections for the Cash Assistance Program for Immigrants Total Overpayments and Total Overpayment Recoveries^{a/} January/March 2002 - April/June 2008



Prior month data May08 used for Inyo.

^{a/} Includes cash collections, grant reductions and underpayments offset.

Source: SOC 808

**Quarterly Report of Overpayments and Collections for the Cash Assistance Program for Immigrants
Total Overpayments and Total Overpayment Recoveries^{a/}
January/March 2002 - April/June 2008**

QUARTERLY PERCENT CHANGE

		Sep	% Chg	Dec	% Chg	Mar	% Chg	Jun	% Chg
01/02	Total Overpayments					717		1,098	53.1%
	Total Overpayment Recoveries					519		893	72.1%
02/03	Total Overpayments	1,307	19.0%	1,192	-8.8%	1,290	8.2%	1,359	5.3%
	Total Overpayment Recoveries	1,220	36.6%	1,070	-12.3%	982	-8.2%	1,062	8.1%
03/04	Total Overpayments	1,411	3.8%	1,381	-2.1%	1,436	4.0%	1,405	-2.2%
	Total Overpayment Recoveries	1,146	7.9%	853	-25.6%	930	9.0%	694	-25.4%
04/05	Total Overpayments	1,373	-2.3%	1,445	5.2%	1,464	1.3%	1,459	-0.3%
	Total Overpayment Recoveries	721	3.9%	667	-7.5%	734	10.0%	658	-10.4%
05/06	Total Overpayments	1,646	12.8%	1,800	9.4%	1,863	3.5%	1,962	5.3%
	Total Overpayment Recoveries	582	-11.6%	733	25.9%	730	-0.4%	789	8.1%
06/07	Total Overpayments	2,050	4.5%	2,201	7.4%	2,276	3.4%	2,382	4.7%
	Total Overpayment Recoveries	598	-24.2%	586	-2.0%	604	3.1%	623	3.1%
07/08	Total Overpayments	2,511	5.4%	2,646	5.4%	2,811	6.2%	3,055	8.7%
	Total Overpayment Recoveries	603	-3.2%	624	3.5%	573	-8.2%	623	8.7%

TRENDS

● **Total Overpayments During the Quarter**

The total number of overpayments increased by 8.7% between January/March 2008 and April/June 2008 Quarters.
The total number of overpayments increased by 28.3% between April/June 2007 and April/June 2008 Quarters.

● **Total Overpayment Recoveries During the Quarter**

The number of overpayment recoveries increased by 8.7% between January/March 2008 and April/June 2008 Quarters.
The number of overpayment recoveries remained the same at 0.0% between April/June 2007 and April/June 2008 Quarters.

Prior month data May08 used for Inyo.

^{a/} Includes cash collections, grant reductions and underpayments offset.

Source: SOC 808