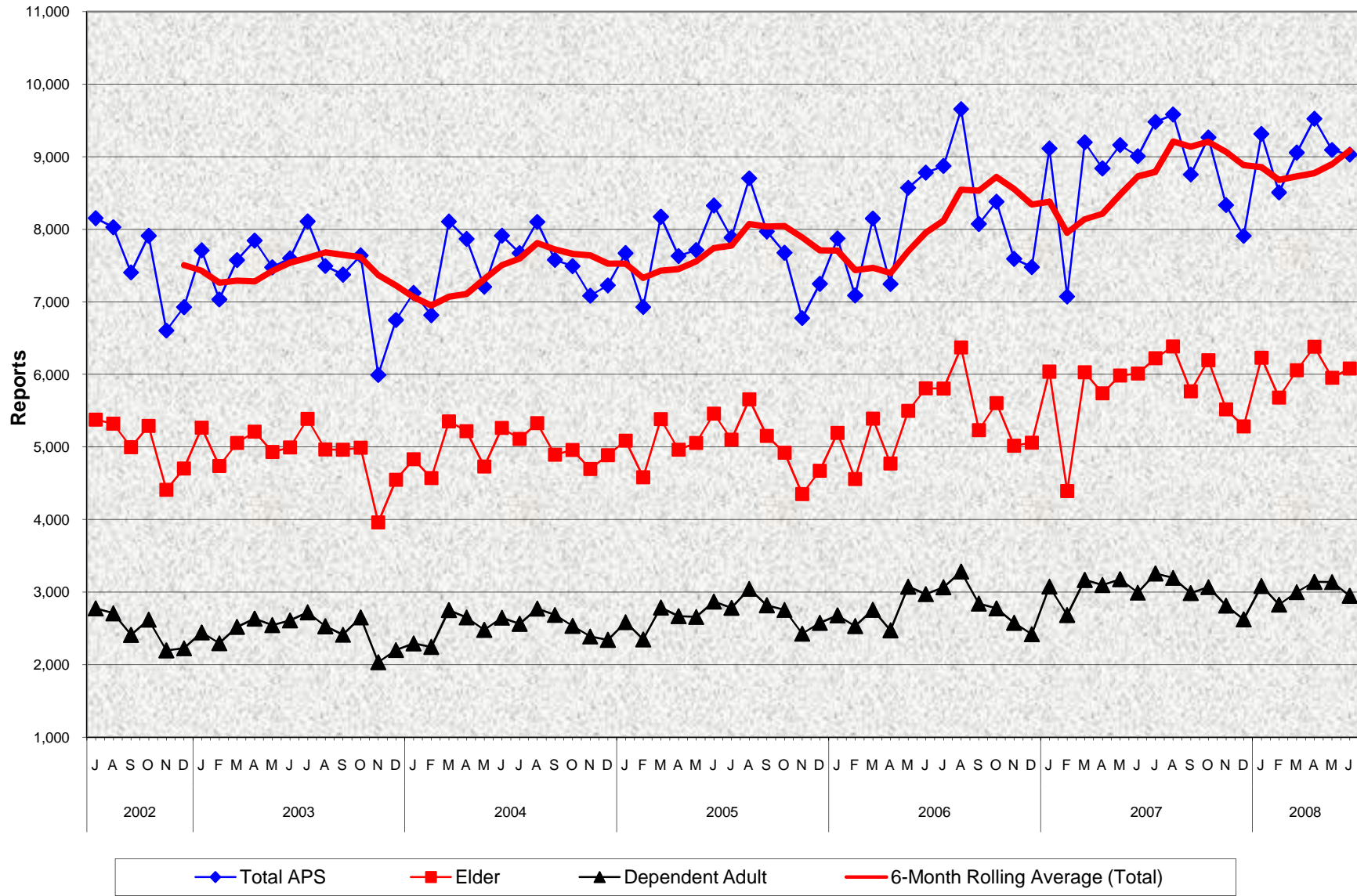


Adult Protective Services (APS) Reports of Alleged Abuse Within APS Jurisdiction July 2002 - June 2008



Adult Protective Services (APS) Reports of Alleged Abuse Within APS Jurisdiction July 2002 - June 2008

MONTHLY PERCENT CHANGE

FY		Jul	% Chg	Aug	% Chg	Sept	% Chg	Oct	% Chg	Nov	% Chg	Dec	% Chg	Jan	% Chg	Feb	% Chg	Mar	% Chg	Apr	% Chg	May	% Chg	Jun	% Chg
02/03	Total	8,153	13.0%	8,029	-1.5%	7,406	-7.8%	7,911	6.8%	6,606	-16.5%	6,928	4.9%	7,710	11.3%	7,034	-8.8%	7,576	7.7%	7,845	3.6%	7,476	-4.7%	7,602	1.7%
	Elder	5,378	11.8%	5,320	-1.1%	4,996	-6.1%	5,290	5.9%	4,410	-16.6%	4,703	6.6%	5,266	12.0%	4,739	-10.0%	5,055	6.7%	5,210	3.1%	4,930	-5.4%	4,992	1.3%
	Dep. Adult	2,775	15.6%	2,709	-2.4%	2,410	-11.0%	2,621	8.8%	2,196	-16.2%	2,225	1.3%	2,444	9.8%	2,295	-6.1%	2,521	9.8%	2,635	4.5%	2,546	-3.4%	2,610	2.5%
03/04	Total	8,108	6.7%	7,495	-7.6%	7,376	-1.6%	7,641	3.6%	5,994	-21.6%	6,751	12.6%	7,124	5.5%	6,817	-4.3%	8,107	18.9%	7,868	-2.9%	7,209	-8.4%	7,912	9.8%
	Elder	5,386	7.9%	4,966	-7.8%	4,963	-0.1%	4,990	0.5%	3,961	-20.6%	4,549	14.8%	4,832	6.2%	4,572	-5.4%	5,354	17.1%	5,217	-2.6%	4,730	-9.3%	5,264	11.3%
	Dep. Adult	2,722	4.3%	2,529	-7.1%	2,413	-4.6%	2,651	9.9%	2,033	-23.3%	2,202	8.3%	2,292	4.1%	2,245	-2.1%	2,753	22.6%	2,651	-3.7%	2,479	-6.5%	2,648	6.8%
04/05	Total	7,673	-3.0%	8,103	5.6%	7,579	-6.5%	7,493	-1.1%	7,085	-5.4%	7,228	2.0%	7,672	6.1%	6,930	-9.7%	8,173	17.9%	7,632	-6.6%	7,715	1.1%	8,328	7.9%
	Elder	5,110	-2.9%	5,330	4.3%	4,894	-8.2%	4,958	1.3%	4,697	-5.3%	4,886	4.0%	5,087	4.1%	4,584	-9.9%	5,385	17.5%	4,964	-7.8%	5,057	1.9%	5,458	7.9%
	Dep. Adult	2,563	-3.2%	2,773	8.2%	2,685	-3.2%	2,535	-5.6%	2,388	-5.8%	2,342	-1.9%	2,585	10.4%	2,346	-9.2%	2,788	18.8%	2,668	-4.3%	2,658	-0.4%	2,870	8.0%
05/06	Total	7,886	-5.3%	8,703	10.4%	7,970	-8.4%	7,677	-3.7%	6,777	-11.7%	7,249	7.0%	7,875	8.6%	7,089	-10.0%	8,149	15.0%	7,246	-11.1%	8,572	18.3%	8,781	2.4%
	Elder	5,102	-6.5%	5,658	10.9%	5,151	-9.0%	4,922	-4.4%	4,351	-11.6%	4,672	7.4%	5,195	11.2%	4,557	-12.3%	5,392	18.3%	4,773	-11.5%	5,497	15.2%	5,809	5.7%
	Dep. Adult	2,784	-3.0%	3,045	9.4%	2,819	-7.4%	2,755	-2.3%	2,426	-11.9%	2,577	6.2%	2,680	4.0%	2,532	-5.5%	2,757	8.9%	2,473	-10.3%	3,075	24.3%	2,972	-3.3%
06/07	Total	8,873	1.0%	9,655	8.8%	8,074	-16.4%	8,380	3.8%	7,593	-9.4%	7,479	-1.5%	9,114	21.9%	7,075	-22.4%	9,198	30.0%	8,839	-3.9%	9,161	3.6%	9,007	-1.7%
	Elder	5,805	-0.1%	6,371	9.8%	5,232	-17.9%	5,605	7.1%	5,016	-10.5%	5,060	0.9%	6,038	19.3%	4,391	-27.3%	6,029	37.3%	5,740	-4.8%	5,983	4.2%	6,013	0.5%
	Dep. Adult	3,068	3.2%	3,284	7.0%	2,842	-13.5%	2,775	-2.4%	2,577	-7.1%	2,419	-6.1%	3,076	27.2%	2,684	-12.7%	3,169	18.1%	3,099	-2.2%	3,178	2.5%	2,994	-5.8%
07/08	Total	9,480	5.3%	9,582	1.1%	8,755	-8.6%	9,265	5.8%	8,334	-10.0%	7,909	-5.1%	9,314	17.8%	-8,508	-8.7%	9,057	6.5%	9,523	5.1%	9,093	-4.5%	9,030	-0.7%
	Elder	6,222	3.5%	6,385	2.6%	5,767	-9.7%	6,196	7.4%	5,519	-10.9%	5,285	-4.2%	6,228	17.8%	5,680	-8.8%	6,057	6.6%	6,382	5.4%	5,954	-6.7%	6,080	2.1%
	Dep. Adult	3,258	8.8%	3,197	-1.9%	2,988	-6.5%	3,069	2.7%	2,815	-8.3%	2,624	-6.8%	3,086	17.6%	2,828	-8.4%	3,000	6.1%	3,141	4.7%	3,139	-0.1%	2,950	-6.0%

TRENDS

- **Reports of Alleged Abuse received within APS jurisdiction decreased -0.7% between May 2008 and June 2008**
2.1% increase in Elder reports
-6.0% decrease in Dependent Adult reports
- **Reports of Alleged Abuse received within APS jurisdiction increased 0.3% between June 2007 and June 2008**
1.1% increase in Elder reports
-1.5% decrease in Dependent Adult reports