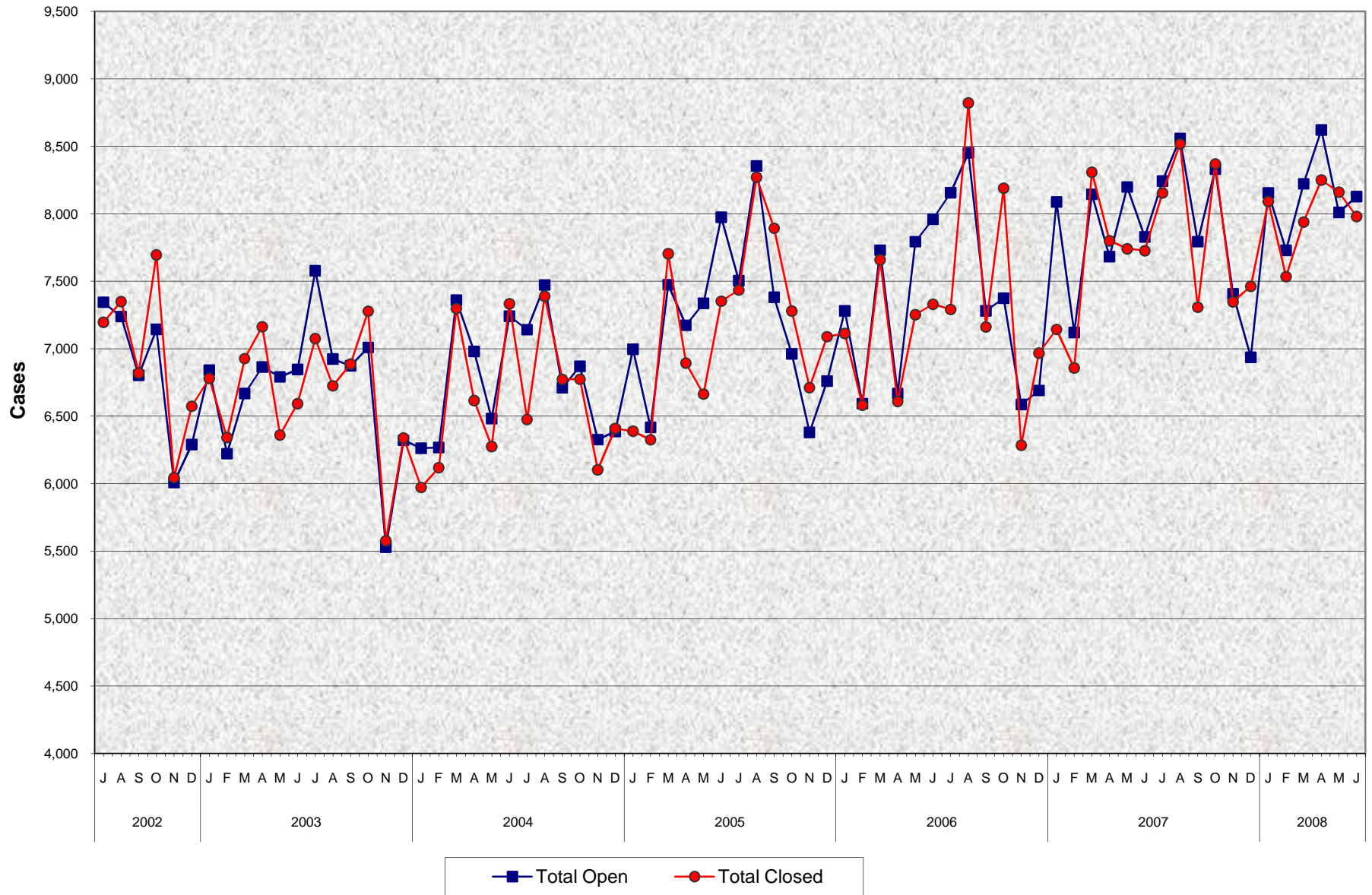


Adult Protective Services (APS) Open and Closed Cases July 2002 - June 2008



**Adult Protective Services (APS)
Open and Closed Cases
July 2002 - June 2008**

MONTHLY PERCENT CHANGE

FY		Jul	% Chg	Aug	% Chg	Sep	% Chg	Oct	% Chg	Nov	% Chg	Dec	% Chg	Jan	% Chg	Feb	% Chg	Mar	% Chg	Apr	% Chg	May	% Chg	Jun	% Chg
02/03	Open	7,344	10.5%	7,238	-1.4%	6,803	-6.0%	7,143	5.0%	6,009	-15.9%	6,289	4.7%	6,841	8.8%	6,222	-9.1%	6,668	7.2%	6,864	2.9%	6,791	-1.1%	6,846	0.8%
	Closed	7,196	7.8%	7,350	2.1%	6,820	-7.2%	7,696	12.8%	6,044	-21.5%	6,574	8.8%	6,780	3.1%	6,342	-6.5%	6,927	9.2%	7,163	3.4%	6,360	-11.2%	6,593	3.7%
03/04	Open	7,577	10.7%	6,924	-8.6%	6,873	-0.7%	7,009	2.0%	5,529	-21.1%	6,321	14.3%	6,263	-0.9%	6,268	0.1%	7,359	17.4%	6,979	-5.2%	6,482	-7.1%	7,241	11.7%
	Closed	7,075	7.3%	6,725	-4.9%	6,886	2.4%	7,278	5.7%	5,576	-23.4%	6,339	13.7%	5,972	-5.8%	6,119	2.5%	7,298	19.3%	6,616	-9.3%	6,276	-5.1%	7,333	16.8%
04/05	Open	7,141	-1.4%	7,472	4.6%	6,710	-10.2%	6,869	2.4%	6,326	-7.9%	6,387	1.0%	6,995	9.5%	6,417	-8.3%	7,474	16.5%	7,173	-4.0%	7,336	2.3%	7,974	8.7%
	Closed	6,475	-11.7%	7,389	14.1%	6,773	-8.3%	6,774	0.0%	6,103	-9.9%	6,409	5.0%	6,389	-0.3%	6,325	-1.0%	7,704	21.8%	6,893	-10.5%	6,664	-3.3%	7,352	10.3%
05/06	Open	7,504	-5.9%	8,354	11.3%	7,381	-11.6%	6,962	-5.7%	6,379	-8.4%	6,760	6.0%	7,280	7.7%	6,593	-9.4%	7,730	17.3%	6,668	-13.7%	7,793	16.9%	7,960	2.1%
	Closed	7,435	1.1%	8,271	11.2%	7,893	-4.6%	7,279	-7.8%	6,712	-7.8%	7,089	5.6%	7,113	0.3%	6,581	-7.5%	7,659	16.4%	6,609	-13.7%	7,252	9.7%	7,330	1.1%
06/07	Open	8,156	2.5%	8,452	3.6%	7,281	-13.9%	7,374	1.3%	6,587	-10.7%	6,690	1.6%	8,087	20.9%	7,120	-12.0%	8,144	14.4%	7,682	-5.7%	8,198	6.7%	7,828	-4.5%
	Closed	7,291	-0.5%	8,822	21.0%	7,161	-18.8%	8,190	14.4%	6,284	-23.3%	6,968	10.9%	7,143	2.5%	6,857	-4.0%	8,308	21.2%	7,800	-6.1%	7,741	-0.8%	7,726	-0.2%
07/08	Open	8,242	5.3%	8,558	3.8%	7,793	-8.9%	8,330	6.9%	7,406	-11.1%	6,936	-6.3%	8,154	17.6%	7,729	-5.2%	8,222	6.4%	8,621	4.9%	8,010	-7.1%	8,127	1.5%
	Closed	8,154	5.5%	8,518	4.5%	7,307	-14.2%	8,370	14.5%	7,348	-12.2%	7,462	1.6%	8,091	8.4%	7,534	-6.9%	7,939	5.4%	8,250	3.9%	8,160	-1.1%	7,980	-2.2%

TRENDS

- **Cases Opened increased 1.5% between May 2008 and June 2008**
3.8% increase in Elder cases
-3.1% decrease in Dependent Adult cases
- **Cases Opened increased 3.8% between June 2007 and June 2008**
5.1% increase in Elder cases
1.4% increase in Dependent Adult cases
- **Cases Closed decreased -2.2% between May 2008 and June 2008**
-3.6% decrease in Elder cases
0.4% increase in Dependent Adult cases
- **Cases Closed increased 3.3% between June 2007 and June 2008**
3.1% increase in Elder cases
3.7% increase in Dependent Adult cases