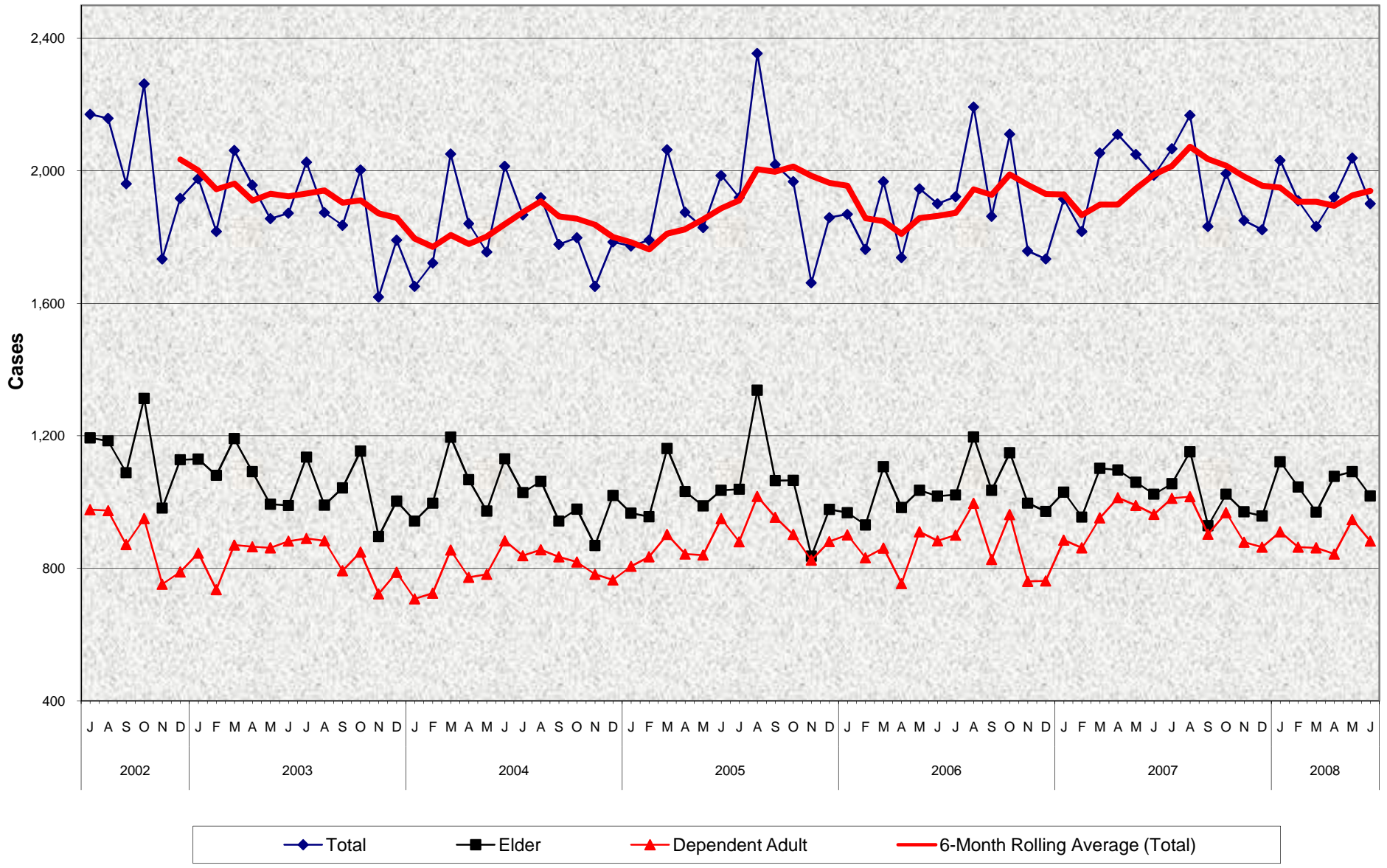


### Adult Protective Services (APS) Confirmed Self Neglect Abuse Cases July 2002 - June 2008



**Adult Protective Services (APS)  
Confirmed Self Neglect Abuse Cases  
July 2002 - June 2008**

**MONTHLY PERCENT CHANGE**

FY		Jul	% Chg	Aug	% Chg	Sep	% Chg	Oct	% Chg	Nov	% Chg	Dec	% Chg	Jan	% Chg	Feb	% Chg	Mar	% Chg	Apr	% Chg	May	% Chg	Jun	% Chg
02/03	Total	2,171	9.1%	2,159	-0.6%	1,961	-9.2%	2,263	15.4%	1,734	-23.4%	1,917	10.6%	1,976	3.1%	1,817	-8.0%	2,062	13.5%	1,957	-5.1%	1,856	-5.2%	1,872	0.9%
	Elder	1,194	5.9%	1,185	-0.8%	1,089	-8.1%	1,313	20.6%	982	-25.2%	1,128	14.9%	1,130	0.2%	1,081	-4.3%	1,192	10.3%	1,092	-8.4%	994	-9.0%	990	-0.4%
	Dep. Adult	977	13.3%	974	-0.3%	872	-10.5%	950	8.9%	752	-20.8%	789	4.9%	846	7.2%	736	-13.0%	870	18.2%	865	-0.6%	862	-0.3%	882	2.3%
03/04	Total	2,026	8.2%	1,874	-7.5%	1,836	-2.0%	2,003	9.1%	1,619	-19.2%	1,791	10.6%	1,651	-7.8%	1,722	4.3%	2,051	19.1%	1,841	-10.2%	1,755	-4.7%	2,014	14.8%
	Elder	1,136	14.7%	991	-12.8%	1,043	5.2%	1,154	10.6%	896	-22.4%	1,003	11.9%	943	-6.0%	997	5.7%	1,196	20.0%	1,068	-10.7%	973	-8.9%	1,131	16.2%
	Dep. Adult	890	0.9%	883	-0.8%	793	-10.2%	849	7.1%	723	-14.8%	788	9.0%	708	-10.2%	725	2.4%	855	17.9%	773	-9.6%	782	1.2%	883	12.9%
04/05	Total	1,867	-7.3%	1,919	2.8%	1,778	-7.3%	1,798	1.1%	1,651	-8.2%	1,785	8.1%	1,773	-0.7%	1,791	1.0%	2,064	15.2%	1,875	-9.2%	1,829	-2.5%	1,986	8.6%
	Elder	1,029	-9.0%	1,063	3.3%	943	-11.3%	979	3.8%	869	-11.2%	1,020	17.4%	967	-5.2%	956	-1.1%	1,162	21.5%	1,032	-11.2%	989	-4.2%	1,036	4.8%
	Dep. Adult	838	-5.1%	856	2.1%	835	-2.5%	819	-1.9%	782	-4.5%	765	-2.2%	806	5.4%	835	3.6%	902	8.0%	843	-6.5%	840	-0.4%	950	13.1%
05/06	Total	1,919	-3.4%	2,355	22.7%	2,019	-14.3%	1,968	-2.5%	1,662	-15.5%	1,859	11.9%	1,869	0.5%	1,763	-5.7%	1,968	11.6%	1,738	-11.7%	1,946	12.0%	1,901	-2.3%
	Elder	1,039	0.3%	1,338	28.8%	1,065	-20.4%	1,066	0.1%	837	-21.5%	978	16.8%	968	-1.0%	931	-3.8%	1,107	18.9%	984	-11.1%	1,036	5.3%	1,018	-1.7%
	Dep. Adult	880	-7.4%	1,017	15.6%	954	-6.2%	902	-5.5%	825	-8.5%	881	6.8%	901	2.3%	832	-7.7%	861	3.5%	754	-12.4%	910	20.7%	883	-3.0%
06/07	Total	1,922	1.1%	2,193	14.1%	1,863	-15.0%	2,111	13.3%	1,758	-16.7%	1,734	-1.4%	1,915	10.4%	1,817	-5.1%	2,054	13.0%	2,110	2.7%	2,050	-2.8%	1,987	-3.1%
	Elder	1,022	0.4%	1,197	17.1%	1,036	-13.5%	1,149	10.9%	997	-13.2%	972	-2.5%	1,030	6.0%	955	-7.3%	1,102	15.4%	1,097	-0.5%	1,060	-3.4%	1,024	-3.4%
	Dep. Adult	900	1.9%	996	10.7%	827	-17.0%	962	16.3%	761	-20.9%	762	0.1%	885	16.1%	862	-2.6%	952	10.4%	1,013	6.4%	990	-2.3%	963	-2.7%
07/08	Total	2,067	4.0%	2,168	4.9%	1,832	-15.5%	1,992	8.7%	1,850	-7.1%	1,822	-1.5%	2,032	11.5%	1,910	-6.0%	1,832	-4.1%	1,921	4.9%	2,039	6.1%	1,901	-6.8%
	Elder	1,056	3.1%	1,152	9.1%	929	-19.4%	1,024	10.2%	971	-5.2%	958	-1.3%	1,122	17.1%	1,046	-6.8%	970	-7.3%	1,078	11.1%	1,092	1.3%	1,019	-6.7%
	Dep. Adult	1,011	5.0%	1,016	0.5%	903	-11.1%	968	7.2%	879	-9.2%	864	-1.7%	910	5.3%	864	-5.1%	862	-0.2%	843	-2.2%	947	12.3%	882	-6.9%

**TRENDS**

- **Total number of Self Neglect cases decreased -6.8% between May 2008 and June 2008**  
-6.7% decrease in Elder cases  
-6.9% decrease in Dependent Adult cases
- **Total number of Self Neglect cases decreased -4.3% between June 2007 and June 2008**  
-0.5% decrease in Elder cases  
-8.4% decrease in Dependent Adult cases