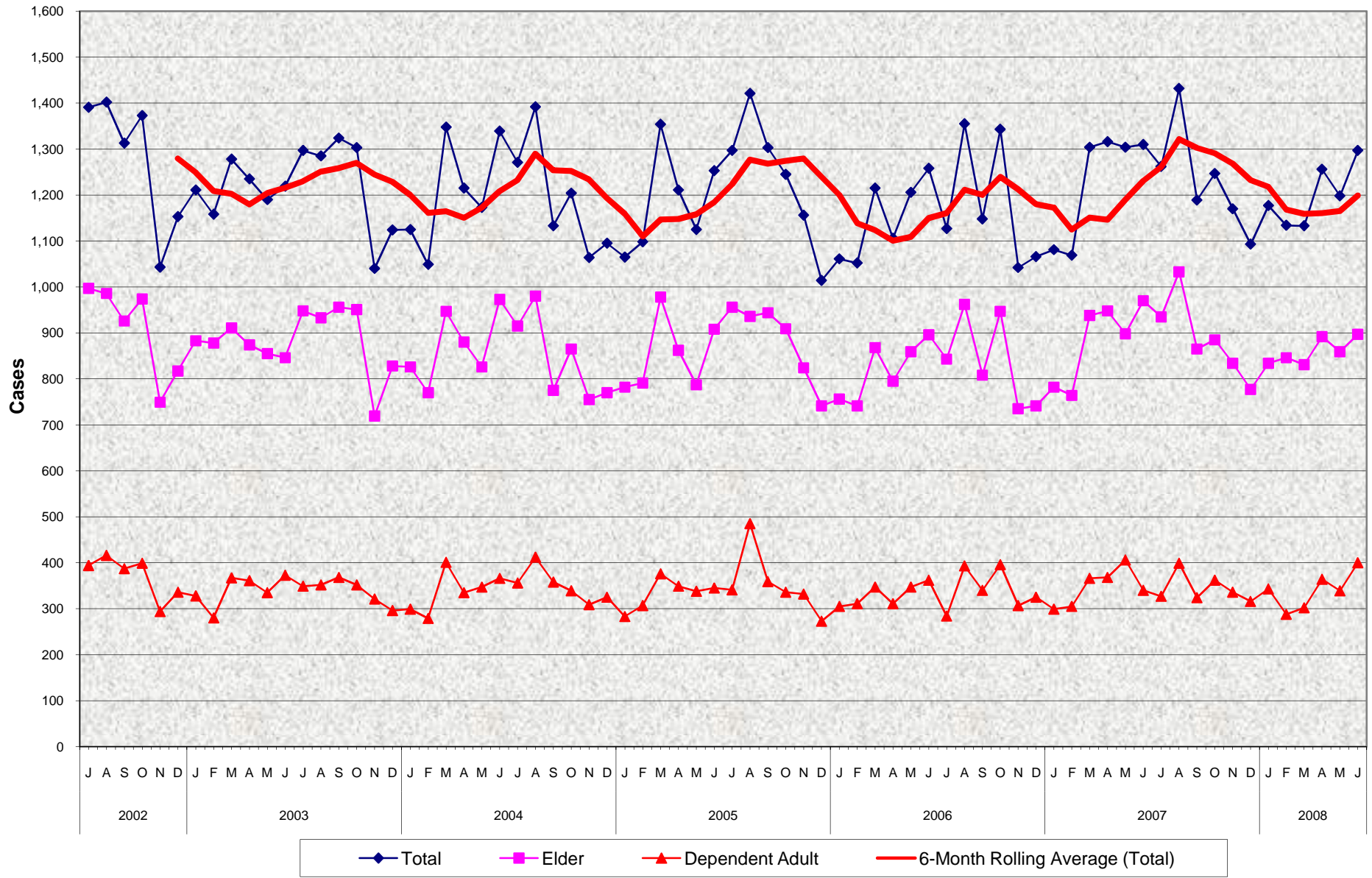


Adult Protective Services (APS) Confirmed Abuse Perpetrated By Others Cases July 2002 - June 2008



Adult Protective Services (APS) Confirmed Abuse Perpetrated By Others Cases July 2002 - June 2008

MONTHLY PERCENT CHANGE

FY		Jul	% Chg	Aug	% Chg	Sep	% Chg	Oct	% Chg	Nov	% Chg	Dec	% Chg	Jan	% Chg	Feb	% Chg	Mar	% Chg	Apr	% Chg	May	% Chg	Jun	% Chg
02/03	Total	1,391	15.1%	1,402	0.8%	1,313	-6.3%	1,373	4.6%	1,043	-24.0%	1,153	10.5%	1,211	5.0%	1,158	-4.4%	1,278	10.4%	1,235	-3.4%	1,190	-3.6%	1,219	2.4%
	Elder	997	13.9%	986	-1.1%	926	-6.1%	974	5.2%	749	-23.1%	817	9.1%	883	8.1%	878	-0.6%	911	3.8%	874	-4.1%	855	-2.2%	846	-1.1%
	Dep. Adult	394	18.3%	416	5.6%	387	-7.0%	399	3.1%	294	-26.3%	336	14.3%	328	-2.4%	280	-14.6%	367	31.1%	361	-1.6%	335	-7.2%	373	11.3%
03/04	Total	1,297	6.4%	1,285	-0.9%	1,324	3.0%	1,303	-1.6%	1,040	-20.2%	1,124	8.1%	1,125	0.1%	1,049	-6.8%	1,348	28.5%	1,215	-9.9%	1,173	-3.5%	1,339	14.2%
	Elder	948	12.1%	933	-1.6%	956	2.5%	951	-0.5%	719	-24.4%	828	15.2%	826	-0.2%	770	-6.8%	947	23.0%	880	-7.1%	826	-6.1%	973	17.8%
	Dep. Adult	349	-6.4%	352	0.9%	368	4.5%	352	-4.3%	321	-8.8%	296	-7.8%	299	1.0%	279	-6.7%	401	43.7%	335	-16.5%	347	3.6%	366	5.5%
04/05	Total	1,271	-5.1%	1,392	9.5%	1,133	-18.6%	1,204	6.3%	1,064	-11.6%	1,095	2.9%	1,065	-2.7%	1,098	3.1%	1,354	23.3%	1,211	-10.6%	1,125	-7.1%	1,253	11.4%
	Elder	915	-6.0%	980	7.1%	775	-20.9%	865	11.6%	755	-12.7%	770	2.0%	782	1.6%	791	1.2%	978	23.6%	862	-11.9%	787	-8.7%	908	15.4%
	Dep. Adult	356	-2.7%	412	15.7%	358	-13.1%	339	-5.3%	309	-8.8%	325	5.2%	283	-12.9%	307	8.5%	376	22.5%	349	-7.2%	338	-3.2%	345	2.1%
05/06	Total	1,297	3.5%	1,421	9.6%	1,303	-8.3%	1,245	-4.5%	1,156	-7.1%	1,014	-12.3%	1,061	4.6%	1,052	-0.8%	1,215	15.5%	1,106	-9.0%	1,206	9.0%	1,258	4.3%
	Elder	956	5.3%	936	-2.1%	944	0.9%	909	-3.7%	824	-9.4%	741	-10.1%	756	2.0%	741	-2.0%	868	17.1%	795	-8.4%	859	8.1%	896	4.3%
	Dep. Adult	341	-1.2%	485	42.2%	359	-26.0%	336	-6.4%	332	-1.2%	273	-17.8%	305	11.7%	311	2.0%	347	11.6%	311	-10.4%	347	11.6%	362	4.3%
06/07	Total	1,127	-10.4%	1,355	20.2%	1,148	-15.3%	1,343	17.0%	1,042	-22.4%	1,066	2.3%	1,081	1.4%	1,069	-1.1%	1,304	22.0%	1,316	0.9%	1,304	-0.9%	1,310	0.5%
	Elder	843	-5.9%	962	14.1%	808	-16.0%	947	17.2%	735	-22.4%	741	0.8%	782	5.5%	764	-2.3%	938	22.8%	948	1.1%	898	-5.3%	970	8.0%
	Dep. Adult	284	-21.5%	393	38.4%	340	-13.5%	396	16.5%	307	-22.5%	325	5.9%	299	-8.0%	305	2.0%	366	20.0%	368	0.5%	406	10.3%	340	-16.3%
07/08	Total	1,262	-3.7%	1,432	13.5%	1,189	-17.0%	1,247	4.9%	1,170	-6.2%	1,093	-6.6%	1,177	7.7%	1,134	-3.7%	1,133	-0.1%	1,256	10.9%	1,198	-4.6%	1,297	8.3%
	Elder	935	-3.6%	1,033	10.5%	865	-16.3%	885	2.3%	834	-5.8%	777	-6.8%	834	7.3%	846	1.4%	831	-1.8%	892	7.3%	859	-3.7%	897	4.4%
	Dep. Adult	327	-3.8%	399	22.0%	324	-18.8%	362	11.7%	336	-7.2%	316	-6.0%	343	8.5%	288	-16.0%	302	4.9%	364	20.5%	339	-6.9%	400	18.0%

TRENDS

- **Total Number of Abuse Perpetrated By Others cases increased 8.3% between May 2008 and June 2008**
4.4% increase in Elder cases
18.0% increase in Dependent Adult cases
- **Total Number of Abuse Perpetrated By Others cases decreased -1.0% between June 2007 and June 2008**
-7.5% decrease in Elder cases
17.6% increase in Dependent Adult cases