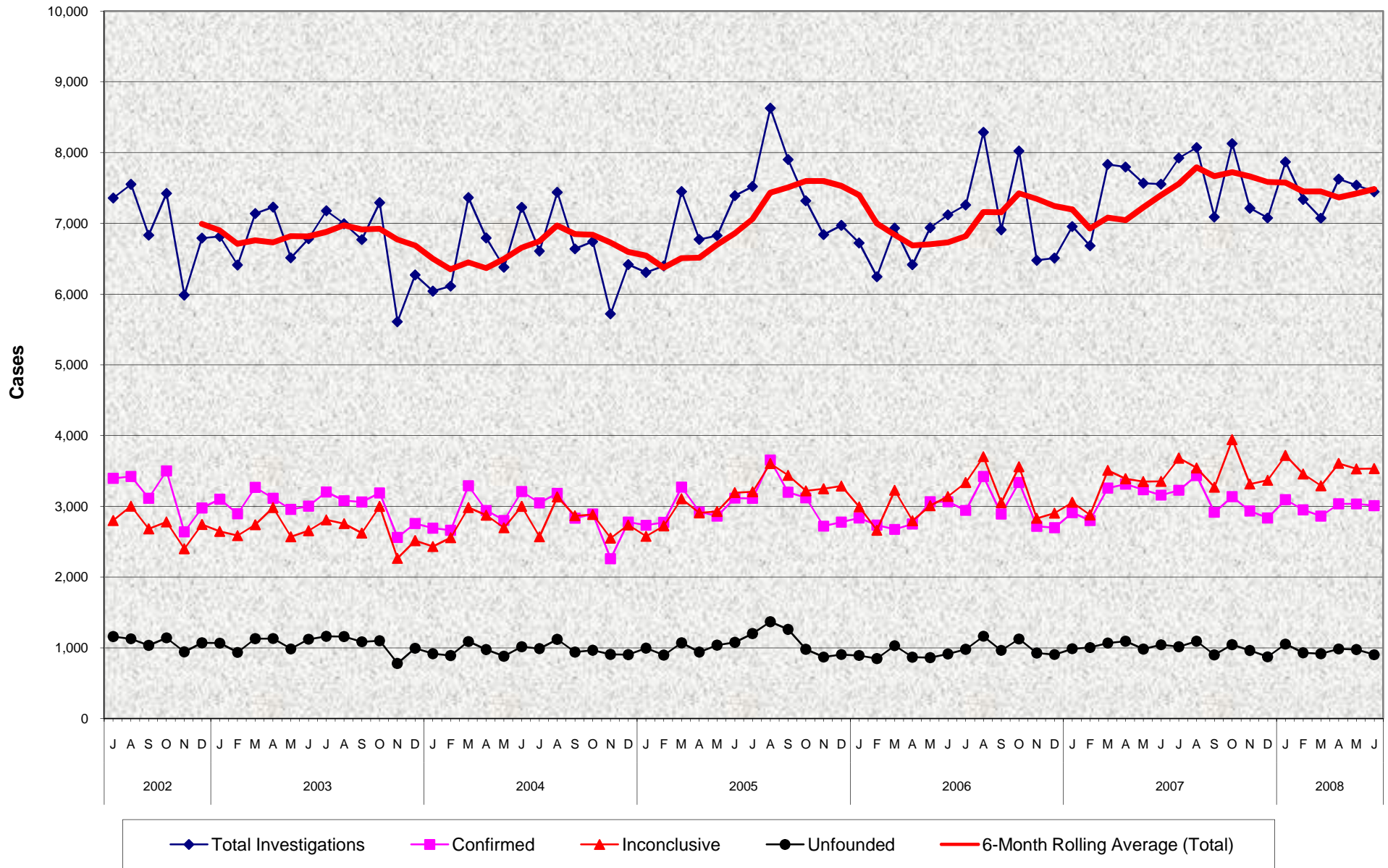


Adult Protective Services (APS) Completed Investigations July 2002 - June 2008



Adult Protective Services (APS) Completed Investigations July 2002 - June 2008

MONTHLY PERCENT CHANGE

FY		Jul	% Chg	Aug	% Chg	Sep	% Chg	Oct	% Chg	Nov	% Chg	Dec	% Chg	Jan	% Chg	Feb	% Chg	Mar	% Chg	Apr	% Chg	May	% Chg	Jun	% Chg
02/03	Total	7,358	6.6%	7,553	2.7%	6,833	-9.5%	7,423	8.6%	5,986	-19.4%	6,792	13.5%	6,815	0.3%	6,412	-5.9%	7,140	11.4%	7,231	1.3%	6,515	-9.9%	6,782	4.1%
	Confirmed	3,396	9.8%	3,421	0.7%	3,115	-8.9%	3,500	12.4%	2,639	-24.6%	2,976	12.8%	3,100	4.2%	2,894	-6.6%	3,268	12.9%	3,115	-4.7%	2,958	-5.0%	3,003	1.5%
	Inconclusive	2,800	1.6%	3,002	7.2%	2,682	-10.7%	2,780	3.7%	2,402	-13.6%	2,744	14.2%	2,647	-3.5%	2,587	-2.3%	2,740	5.9%	2,983	8.9%	2,571	-13.8%	2,656	3.3%
	Unfounded	1,162	10.4%	1,130	-2.8%	1,036	-8.3%	1,143	10.3%	945	-17.3%	1,072	13.4%	1,068	-0.4%	937	-12.3%	1,132	20.8%	1,133	0.1%	986	-13.0%	1,123	13.9%
03/04	Total	7,178	5.8%	6,996	-2.5%	6,771	-3.2%	7,292	7.7%	5,610	-23.1%	6,271	11.8%	6,043	-3.6%	6,113	1.2%	7,365	20.5%	6,794	-7.8%	6,381	-6.1%	7,226	13.2%
	Confirmed	3,203	6.7%	3,080	-3.8%	3,062	-0.6%	3,189	4.1%	2,562	-19.7%	2,758	7.7%	2,692	-2.4%	2,663	-1.1%	3,291	23.6%	2,941	-10.6%	2,802	-4.7%	3,208	14.5%
	Inconclusive	2,810	5.8%	2,756	-1.9%	2,622	-4.9%	3,001	14.5%	2,267	-24.5%	2,517	11.0%	2,433	-3.3%	2,558	5.1%	2,983	16.6%	2,876	-3.6%	2,697	-6.2%	3,001	11.3%
	Unfounded	1,165	3.7%	1,160	-0.4%	1,087	-6.3%	1,102	1.4%	781	-29.1%	996	27.5%	918	-7.8%	892	-2.8%	1,091	22.3%	977	-10.4%	882	-9.7%	1,017	15.3%
04/05	Total	6,610	-8.5%	7,439	12.5%	6,640	-10.7%	6,742	1.5%	5,722	-15.1%	6,420	12.2%	6,307	-1.8%	6,400	1.5%	7,451	16.4%	6,774	-9.1%	6,827	0.8%	7,390	8.2%
	Confirmed	3,048	-5.0%	3,184	4.5%	2,832	-11.1%	2,891	2.1%	2,260	-21.8%	2,778	22.9%	2,733	-1.6%	2,775	1.5%	3,272	17.9%	2,923	-10.7%	2,861	-2.1%	3,116	8.9%
	Inconclusive	2,570	-14.4%	3,133	21.9%	2,867	-8.5%	2,884	0.6%	2,552	-11.5%	2,737	7.2%	2,577	-5.8%	2,726	5.8%	3,107	14.0%	2,909	-6.4%	2,927	0.6%	3,194	9.1%
	Unfounded	992	-2.5%	1,122	13.1%	941	-16.1%	967	2.8%	910	-5.9%	905	-0.5%	997	10.2%	899	-9.8%	1,072	19.2%	942	-12.1%	1,039	10.3%	1,080	3.9%
05/06	Total	7,522	1.8%	8,629	14.7%	7,901	-8.4%	7,318	-7.4%	6,841	-6.5%	6,972	1.9%	6,723	-3.6%	6,247	-7.1%	6,933	11.0%	6,417	-7.4%	6,938	8.1%	7,121	2.6%
	Confirmed	3,112	-0.1%	3,654	17.4%	3,200	-12.4%	3,119	-2.5%	2,720	-12.8%	2,777	2.1%	2,836	2.1%	2,734	-3.6%	2,674	-2.2%	2,751	2.9%	3,066	11.5%	3,066	
	Inconclusive	3,206	0.4%	3,604	12.4%	3,438	-4.6%	3,219	-6.4%	3,249	0.9%	3,288	1.2%	2,993	-9.0%	2,663	-11.0%	3,227	21.2%	2,796	-13.4%	3,009	7.6%	3,139	4.3%
	Unfounded	1,204	11.5%	1,371	13.9%	1,263	-7.9%	980	-22.4%	872	-11.0%	907	4.0%	894	-1.4%	850	-4.9%	1,032	21.4%	870	-15.7%	863	-0.8%	916	6.1%
06/07	Total	7,261	2.0%	8,289	14.2%	6,911	-16.6%	8,022	16.1%	6,478	-19.2%	6,510	0.5%	6,957	6.9%	6,685	-3.9%	7,834	17.2%	7,798	-0.5%	7,568	-2.9%	7,555	-0.2%
	Confirmed	2,942	-4.0%	3,422	16.3%	2,892	-15.5%	3,336	15.4%	2,718	-18.5%	2,698	-0.7%	2,911	7.9%	2,799	-3.8%	3,257	16.4%	3,313	1.7%	3,234	-2.4%	3,158	-2.4%
	Inconclusive	3,337	6.3%	3,701	10.9%	3,053	-17.5%	3,559	16.6%	2,831	-20.5%	2,905	2.6%	3,057	5.2%	2,880	-5.8%	3,508	21.8%	3,390	-3.4%	3,350	-1.2%	3,352	0.1%
	Unfounded	982	7.2%	1,166	18.7%	966	-17.2%	1,127	16.7%	929	-17.6%	907	-2.4%	989	9.0%	1,006	1.7%	1,069	6.3%	1,095	2.4%	984	-10.1%	1,045	6.2%
07/08	Total	7,925	4.9%	8,073	1.9%	7,090	-12.2%	8,127	14.6%	7,214	-11.2%	7,078	-1.9%	7,868	11.2%	7,339	-6.7%	7,074	-3.6%	7,628	7.8%	7,540	-1.2%	7,447	-1.2%
	Confirmed	3,227	2.2%	3,434	6.4%	2,916	-15.1%	3,138	7.6%	2,934	-6.5%	2,835	-3.4%	3,095	9.2%	2,950	-4.7%	2,863	-2.9%	3,036	6.0%	3,034	-0.1%	3,010	-0.8%
	Inconclusive	3,681	9.8%	3,543	-3.7%	3,271	-7.7%	3,942	20.5%	3,315	-15.9%	3,368	1.6%	3,718	10.4%	3,457	-7.0%	3,291	-4.8%	3,606	9.6%	3,529	-2.1%	3,533	0.1%
	Unfounded	1,017	-2.7%	1,096	7.8%	903	-17.6%	1,047	15.9%	965	-7.8%	875	-9.3%	1,055	20.6%	932	-11.7%	920	-1.3%	986	7.2%	977	-0.9%	904	-7.5%

TRENDS

- **Completed Investigations decreased -1.2% between May 2008 and June 2008**
 -0.8% decrease in Confirmed cases
 0.1% increase in Inconclusive cases
 -7.5% decrease in Unfounded cases
- **Completed Investigations decreased -1.4% between June 2007 and June 2008**
 -4.7% decrease in Confirmed cases
 5.4% increase in Inconclusive cases
 -13.5% decrease in Unfounded cases