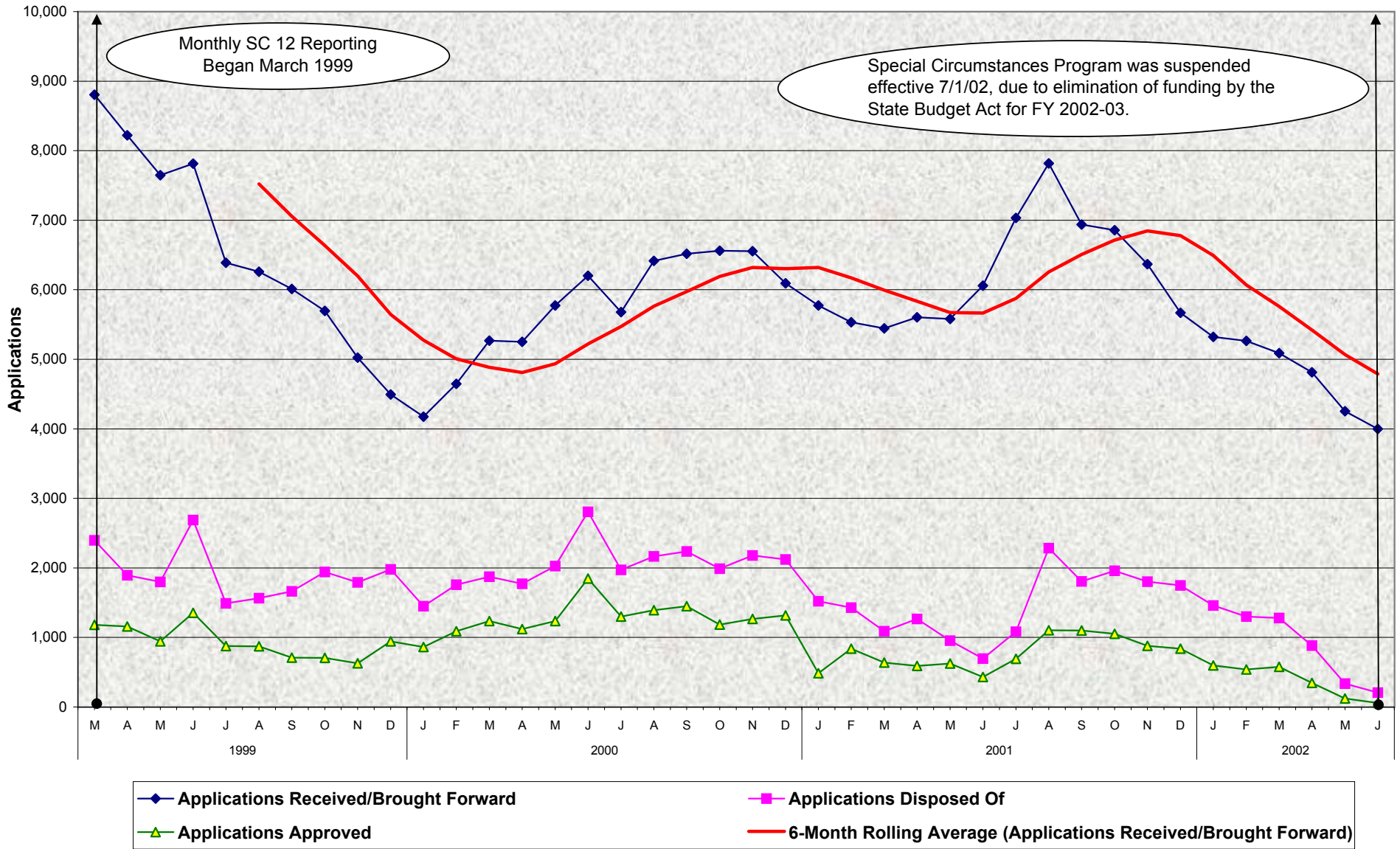


Special Circumstances Program Applications Received/Brought Forward, Disposed Of^{a/} and Approved March 1999 - June 2002^{b/}



a/ Applications approved, denied, other dispositions.
b/ Data for initial report which covers six months, Sept. 1998 - Feb. 1999, not included.
Source: SC 12

Special Circumstances Program
Applications Received/Brought Forward, Disposed Of^{a/} and Approved
March 1999 - June 2002^{b/}

MONTHLY PERCENT CHANGE

		Jul	% Chg	Aug	% Chg	Sep	% Chg	Oct	% Chg	Nov	% Chg	Dec	% Chg	Jan	% Chg	Feb	% Chg	Mar	% Chg	Apr	% Chg	May	% Chg	Jun	% Chg
98/99	Recd/Brght Fwd																	8,805		8,221	-7%	7,649	-7.0%	7,815	2.2%
	Disposed Of																	2,396		1,893	-21%	1,800	-4.9%	2,688	49.3%
	Approved																	1,181		1,158	-2%	942	-18.7%	1,353	43.6%
99/00	Recd/Brght Fwd	6,388	-18.3%	6,259	-2.0%	6,010	-4.0%	5,695	-5.2%	5,024	-11.8%	4,495	-10.5%	4,176	-7.1%	4,647	11.3%	5,268	13.4%	5,250	0%	5,773	10.0%	6,203	7.4%
	Disposed Of	1,491	-44.5%	1,565	5.0%	1,662	6.2%	1,943	16.9%	1,792	-7.8%	1,980	10.5%	1,449	-26.8%	1,758	21.3%	1,873	6.5%	1,772	-5%	2,028	14.4%	2,807	38.4%
	Approved	877	-35.2%	871	-0.7%	710	-18.5%	706	-0.6%	627	-11.2%	944	50.6%	862	-8.7%	1,088	26.2%	1,234	13.4%	1,119	-9%	1,234	10.3%	1,845	49.5%
00/01	Recd/Brght Fwd	5,680	-8.4%	6,415	12.9%	6,519	1.6%	6,561	0.6%	6,553	-0.1%	6,093	-7.0%	5,775	-5.2%	5,532	-4.2%	5,444	-1.6%	5,605	3%	5,582	-0.4%	6,059	8.5%
	Disposed Of	1,971	-29.8%	2,167	9.9%	2,236	3.2%	1,990	-11.0%	2,180	9.5%	2,120	-2.8%	1,521	-28.3%	1,430	-6.0%	1,088	-23.9%	1,267	16%	954	-24.7%	697	-26.9%
	Approved	1,299	-29.6%	1,393	7.2%	1,450	4.1%	1,183	-18.4%	1,267	7.1%	1,317	3.9%	487	-63.0%	838	72.1%	637	-24.0%	590	-7%	625	5.9%	430	-31.2%
01/02	Recd/Brght Fwd	7,032	16.1%	7,818	11.2%	6,938	-11.3%	6,856	-1.2%	6,367	-7.1%	5,670	-10.9%	5,322	-6.1%	5,265	-1.1%	5,088	-3.4%	4,815	-5%	4,252	-11.7%	3,998	-6.0%
	Disposed Of	1,083	55.4%	2,284	110.9%	1,806	-20.9%	1,960	8.5%	1,803	-8.0%	1,747	-3.1%	1,461	-16.4%	1,300	-11.0%	1,279	-1.6%	884	-31%	335	-62.1%	208	-37.9%
	Approved	693	61.2%	1,103	59.2%	1,101	-0.2%	1,052	-4.5%	878	-16.5%	840	-4.3%	599	-28.7%	540	-9.8%	576	6.7%	346	-40%	123	-64.5%	59	-52.0%

TRENDS

● **Applications Received/Brought Forward:**

The number of applications received/brought forward decreased by 6.0% between May 2002 and June 2002

The number of applications received/brought forward decreased by 34.0% from June 2001 to June 2002

● **Applications Disposed Of:**

The number of applications disposed of decreased by 37.9% between May 2002 and June 2002

The number of applications disposed of decreased by 70.2% from June 2001 to June 2002

● **Applications Approved:**

The number of applications approved decreased by 52.0% between May 2002 and June 2002

The number of applications approved decreased by 86.3% from June 2001 to June 2002

● **The Special Circumstances Program (SCP) was suspended effective July 1, 2002, due to elimination of funding by the State Budget Act for 2002-03.**

General Fund savings of \$4.5 million.

a/ Applications approved, denied, other dispositions.

b/ Data for initial report which covers six months, Sept. 1998 - Feb. 1999, not included.

Source: SC 12