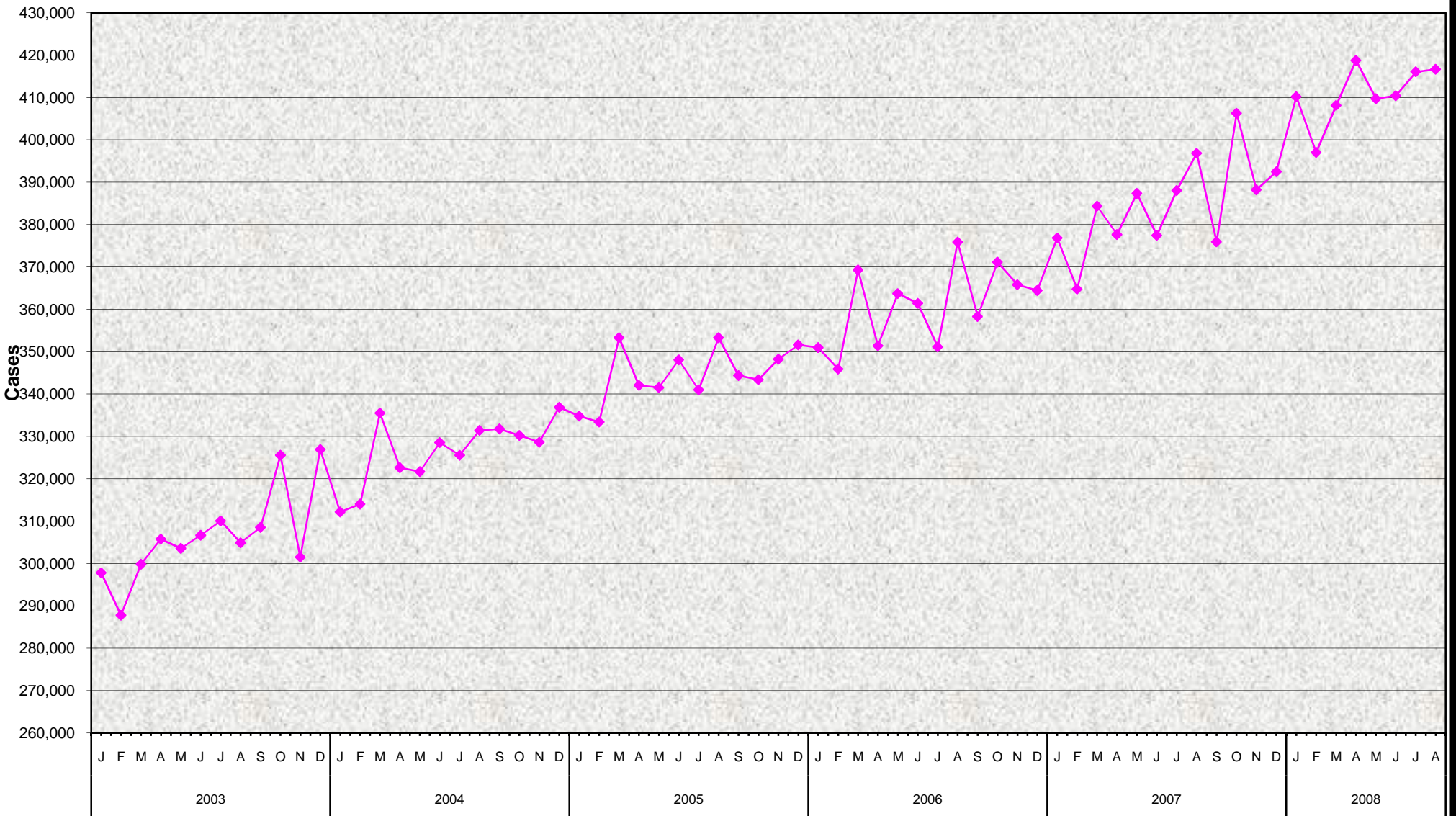


### In-Home Supportive Services (IHSS) Paid Cases July 2003 - August 2008



**In-Home Supportive Services (IHSS)  
Paid Cases  
July 2003 - August 2008**

**MONTHLY PERCENT CHANGE**

FY	Jul	% Chg	Aug	% Chg	Sep	% Chg	Oct	% Chg	Nov	% Chg	Dec	% Chg	Jan	% Chg	Feb	% Chg	Mar	% Chg	Apr	% Chg	May	% Chg	Jun	% Chg
03/04	310,010		304,875	-1.7%	308,515	1.2%	325,549	5.5%	301,470	-7.4%	326,898	8.4%	312,128	-4.5%	314,007	0.6%	335,477	6.8%	322,602	-3.8%	321,664	-0.3%	328,502	2.1%
04/05	325,532	-0.9%	331,404	1.8%	331,717	0.1%	330,199	-0.5%	328,602	-0.5%	336,840	2.5%	334,778	-0.6%	333,384	-0.4%	353,269	6.0%	342,033	-3.2%	341,498	-0.2%	348,056	1.9%
05/06	340,999	-2.0%	353,290	3.6%	344,344	-2.5%	343,392	-0.3%	348,202	1.4%	351,578	1.0%	350,930	-0.2%	345,873	-1.4%	369,257	6.8%	351,372	-4.8%	363,696	3.5%	361,377	-0.6%
06/07	351,118	-2.8%	375,838	7.0%	358,272	-4.7%	371,139	3.6%	365,798	-1.4%	364,442	-0.4%	376,840	3.4%	364,747	-3.2%	384,349	5.4%	377,627	-1.7%	387,315	2.6%	377,444	-2.5%
07/08	388,047	2.8%	396,830	2.3%	375,904	-5.3%	406,286	8.1%	388,221	-4.4%	392,478	1.1%	410,173	4.5%	397,002	-3.2%	408,112	2.8%	418,737	2.6%	409,698	-2.2%	410,387	0.2%
08/09	416,043	1.4%	416,650	0.1%																				

**TRENDS**

- In-Home Paid Cases increased 0.1% between July 2008 and August 2008.
- In-Home Paid Cases increased 5% between August 2007 and August 2008.