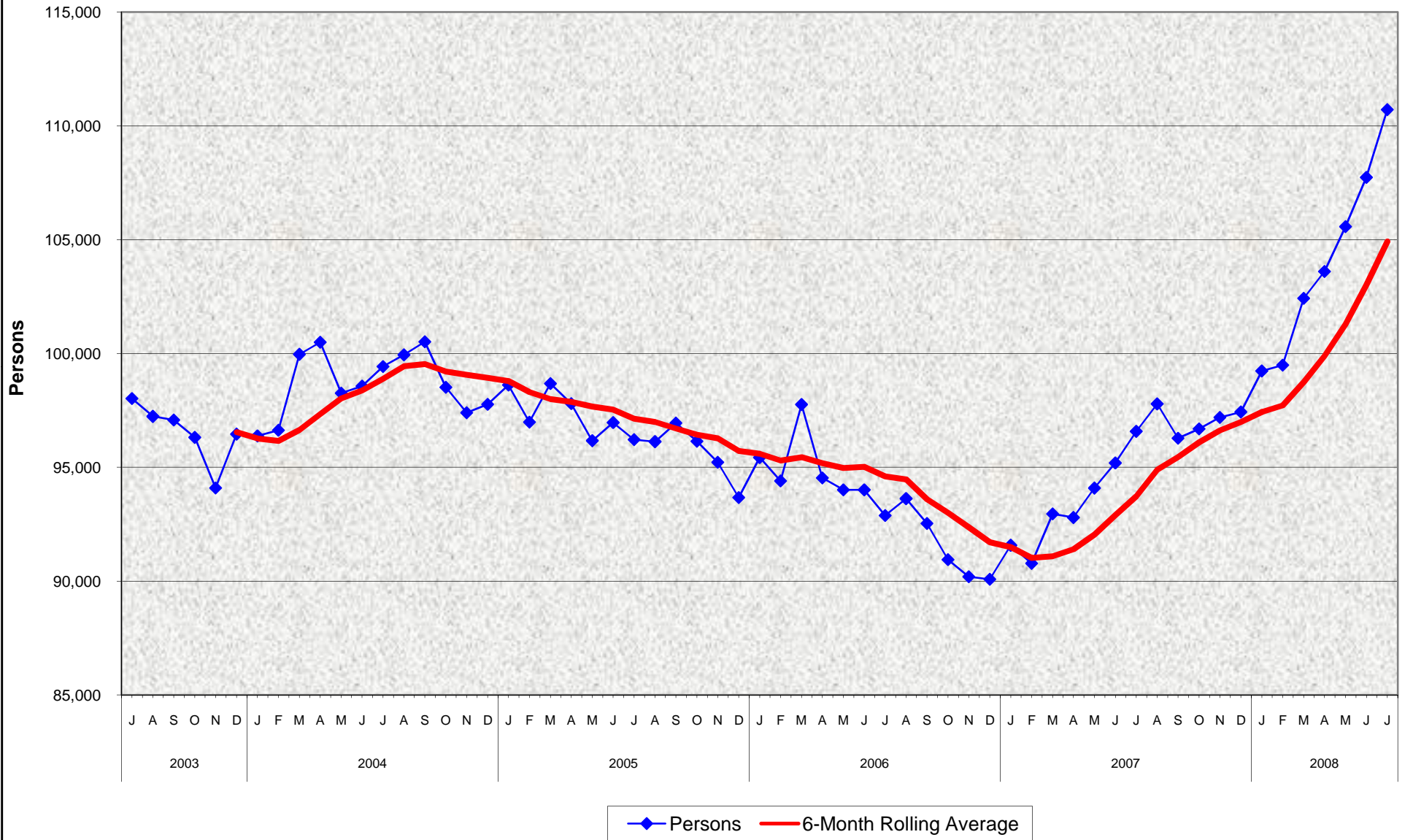


Adult Programs Number of Persons Receiving General Relief July 2003 - July 2008



Adult Programs Number of Persons Receiving General Relief July 2003 - July 2008

MONTHLY PERCENT CHANGE

FY		Jul	% Chg	Aug	% Chg	Sep	% Chg	Oct	% Chg	Nov	% Chg	Dec	% Chg	Jan	% Chg	Feb	% Chg	Mar	% Chg	Apr	% Chg	May	% Chg	Jun	% Chg
02/03	Total	95,784	5.0%	95,718	-0.1%	95,818	0.1%	93,660	-2.3%	94,182	0.6%	93,161	-1.1%	94,449	1.4%	95,274	0.9%	94,742	-0.6%	96,803	2.2%	97,549	0.8%	97,250	-0.3%
03/04	Total	97,141	-0.1%	98,020	0.9%	97,234	-0.8%	97,073	-0.2%	96,311	-0.8%	94,091	-2.3%	96,455	2.5%	96,379	-0.1%	96,621	0.3%	99,962	3.5%	100,489	0.5%	98,252	-2.2%
04/05	Total	98,563	0.3%	99,426	0.9%	99,937	0.5%	100,509	0.6%	98,514	-2.0%	97,394	-1.1%	97,763	0.4%	98,613	0.9%	96,984	-1.7%	98,679	1.7%	97,796	-0.9%	96,166	-1.7%
05/06	Total	96,960	0.8%	96,210	-0.8%	96,125	-0.1%	96,942	0.8%	96,141	-0.8%	95,218	-1.0%	93,667	-1.6%	95,429	1.9%	94,395	-1.1%	97,756	3.6%	94,532	-3.3%	94,006	-0.6%
06/07	Total	94,006	0.0%	92,876	-1.2%	93,621	0.8%	92,528	-1.2%	90,942	-1.7%	90,192	-0.8%	90,077	-0.1%	91,571	1.7%	90,774	-0.9%	92,951	2.4%	92,791	-0.2%	94,084	1.4%
07/08	Total	95,190	1.2%	96,576	1.5%	97,784	1.3%	96,276	-1.5%	96,682	0.4%	97,190	0.5%	97,428	0.2%	99,227	1.8%	99,485	0.3%	102,420	3.0%	103,603	1.2%	105,570	1.9%
08/09	Total	110,711	4.9%																						

TRENDS

- Number of persons receiving General Relief increased 4.9% between June 2008 and July 2008.
- Number of persons receiving General Relief increased 16.3% between July 2007 and July 2008.