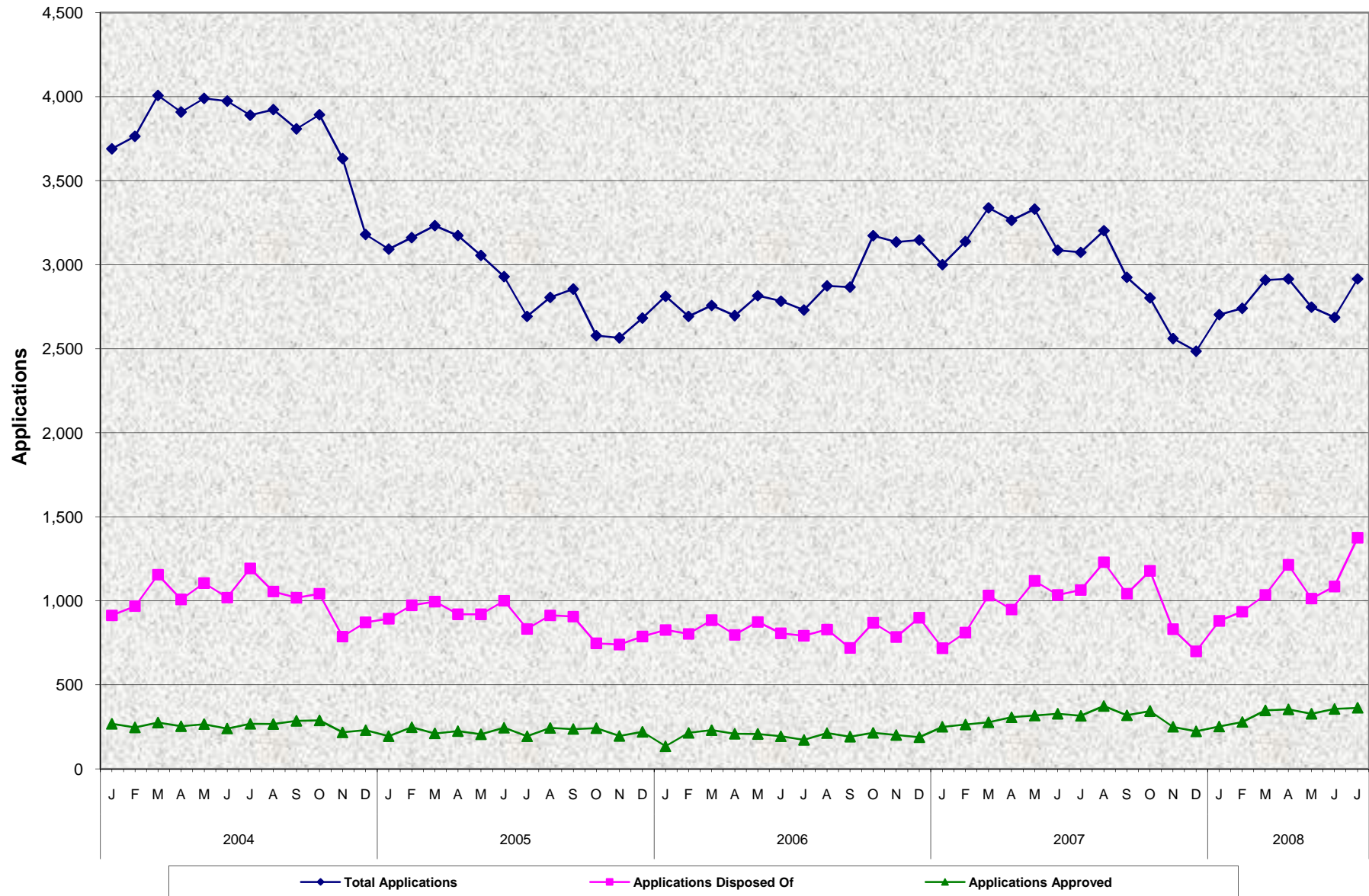


Cash Assistance Program for Immigrants (CAPI) Total Applications, Applications Disposed Of ^{a/} and Applications Approved January 2004 - July 2008



^{a/} Applications approved, restored, denied/withdrawn, other approvals.
 Source: CA 1037

**Cash Assistance Program for Immigrants (CAPI)
Total Applications, Applications Disposed Of ^{a/} and Applications Approved
January 2004 - July 2008**

MONTHLY PERCENT CHANGE

		Jul	% Chg	Aug	% Chg	Sep	% Chg	Oct	% Chg	Nov	% Chg	Dec	% Chg	Jan	% Chg	Feb	% Chg	Mar	% Chg	Apr	% Chg	May	% Chg	Jun	% Chg
03/04	Total Apps.											4,054		3,690	-9.0%	3,764	2.0%	4,007	6.5%	3,908	-2.5%	3,989	2.1%	3,974	-0.4%
	Apps. Disp. Of											1,203		914	-24.0%	969	6.0%	1,156	19.3%	1,009	-12.7%	1,106	9.6%	1,020	-7.8%
	Apps. Appvd.											310		269	-13.2%	248	-7.8%	276	11.3%	255	-7.6%	267	4.7%	241	-9.7%
04/05	Total Apps.	3,890	-2.1%	3,923	0.8%	3,808	-2.9%	3,892	2.2%	3,632	-6.7%	3,181	-12.4%	3,093	-2.8%	3,162	2.2%	3,233	2.2%	3,174	-1.8%	3,056	-3.7%	2,930	-4.1%
	Apps. Disp. Of	1,193	17.0%	1,056	-11.5%	1,019	-3.5%	1,043	2.4%	788	-24.4%	873	10.8%	894	2.4%	974	8.9%	996	2.3%	921	-7.5%	921	0.0%	1,001	8.7%
	Apps. Appvd.	269	11.6%	268	-0.4%	287	7.1%	289	0.7%	218	-24.6%	231	6.0%	196	-15.2%	251	28.1%	213	-15.1%	231	8.5%	207	-10.4%	246	18.8%
05/06	Total Apps.	2,694	-8.1%	2,806	4.2%	2,856	1.8%	2,579	-9.7%	2,492	-3.4%	2,609	4.7%	2,739	5.0%	2,694	-1.6%	2,684	-0.4%	2,698	0.5%	2,816	4.4%	2,784	-1.1%
	Apps. Disp. Of	833	-16.8%	914	9.7%	907	-0.8%	748	-17.5%	691	-7.6%	739	6.9%	777	5.1%	804	3.5%	836	4.0%	798	-4.5%	875	9.6%	807	-7.8%
	Apps. Appvd.	195	-20.7%	244	25.1%	238	-2.5%	243	2.1%	179	-26.3%	203	13.4%	118	-41.9%	215	82.2%	213	-0.9%	210	-1.4%	209	-0.5%	195	-6.7%
06/07	Total Apps.	2,731	-1.9%	2,875	5.3%	2,867	-0.3%	3,173	10.7%	3,136	-1.2%	3,147	0.4%	3,001	-4.6%	3,138	4.6%	3,339	6.4%	3,264	-2.2%	3,331	2.1%	3,087	-7.3%
	Apps. Disp. Of	793	-1.7%	830	4.7%	721	-13.1%	870	20.7%	786	-9.7%	900	14.5%	719	-20.1%	812	12.9%	1,032	27.1%	949	-8.0%	1,119	17.9%	1,035	-7.5%
	Apps. Appvd.	174	-10.8%	214	23.0%	193	-9.8%	215	11.4%	203	-5.6%	190	-6.4%	251	32.1%	265	5.6%	278	4.9%	308	10.8%	318	3.2%	329	3.5%
07/08	Total Apps.	3,074	-0.4%	3,203	4.2%	2,925	-8.7%	2,803	-4.2%	2,562	-8.6%	2,486	-3.0%	2,704	8.8%	2,741	1.4%	2,910	6.2%	2,916	0.2%	2,748	-5.8%	2,687	-2.2%
	Apps. Disp. Of	1,065	2.9%	1,230	15.5%	1,043	-15.2%	1,179	13.0%	832	-29.4%	700	-15.9%	881	25.9%	936	6.2%	1,036	10.7%	1,215	17.3%	1,014	-16.5%	1,086	7.1%
	Apps. Appvd.	317	-3.6%	375	18.3%	320	-14.7%	345	7.8%	251	-27.2%	224	-10.8%	253	12.9%	280	10.7%	349	24.6%	355	1.7%	328	-7.6%	357	8.8%
08/09	Total Apps.	2,916	8.5%																						
	Apps. Disp. Of	1,376	26.7%																						
	Apps. Appvd.	364	2.0%																						

TRENDS

● **Total Applications:**

The number of applications increased by 8.5% between June 2008 and July 2008
The number of applications decreased by 5.1% from July 2007 to July 2008

● **Applications Disposed Of:**

The number of applications disposed of increased by 26.7% between June 2008 and July 2008
The number of applications disposed of increased by 29.2% from July 2007 to July 2008

● **Applications Approved:**

The number of applications approved increased by 2.0% between June 2008 and July 2008
The number of applications approved increased by 14.8% from July 2007 to July 2008