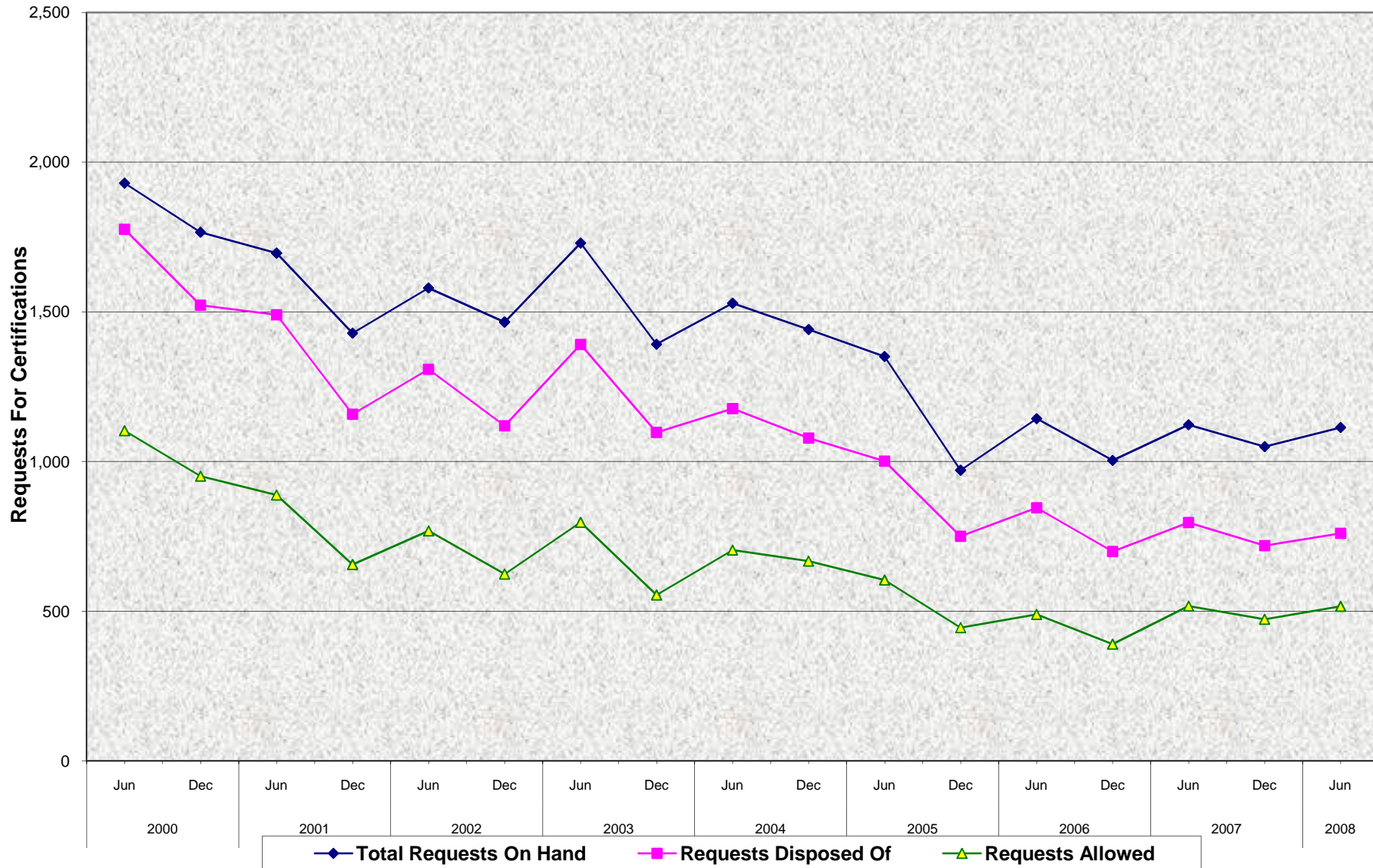


### Adult Programs Out-Of-Home Care Total Requests For Certifications On Hand, Disposed Of<sup>a/</sup> and Allowed<sup>b/</sup> June 2000 - June 2008<sup>c/</sup>



a/ Allowed, denied, withdrawn/cancelled.  
 b/ Certified to SSA.  
 c/ No 3/99 data, so avg'd previous 6 mos. data.  
 Source: ABD 216

**Adult Programs Out-Of-Home Care  
Total Requests For Certifications On Hand, Disposed Of<sup>a/</sup> and Allowed<sup>b/</sup>  
June 2000 - June 2008<sup>c/</sup>**

**SEMI-ANNUAL PERCENT CHANGE**

		Jul - Dec	% Chg	Jan - Jun	% Chg
99/00	On Hand			1,930	
	Disposed Of			1,776	
	Allowed			1,103	
00/01	On Hand	1,766	-8.5%	1,696	-4.0%
	Disposed Of	1,522	-14.3%	1,490	-2.1%
	Allowed	951	-13.8%	888	-6.6%
01/02	On Hand	1,429	-15.7%	1,580	10.6%
	Disposed Of	1,158	-22.3%	1,308	13.0%
	Allowed	656	-26.1%	768	17.1%
02/03	On Hand	1,466	-7.2%	1,730	18.0%
	Disposed Of	1,119	-14.4%	1,391	24.3%
	Allowed	624	-18.8%	797	27.7%
03/04	On Hand	1,392	-19.5%	1,529	9.8%
	Disposed Of	1,097	-21.1%	1,177	7.3%
	Allowed	554	-30.5%	704	27.1%
04/05	On Hand	1,441	-5.8%	1,351	-6.2%
	Disposed Of	1,078	-8.4%	1,001	-7.1%
	Allowed	667	-5.3%	604	-9.4%
05/06	On Hand	971	-28.1%	1,143	17.7%
	Disposed Of	750	-25.1%	845	12.7%
	Allowed	445	-26.3%	489	9.9%
06/07	On Hand	1,004	-12.2%	1,123	11.9%
	Disposed Of	699	-17.3%	796	13.9%
	Allowed	390	-20.2%	517	32.6%
07/08	On Hand	1,050	-6.5%	1,114	6.1%
	Disposed Of	719	-9.7%	760	5.7%
	Allowed	473	-8.5%	516	9.1%

● **Total On Hand:**

The number increased by 6.1% between December 2007 and June 2008  
The number decreased by 0.85% from June 2007 to June 2008

● **Disposed Of:**

The number increased by 5.7% between December 2007 and June 2008  
The number decreased by 4.5% from June 2007 to June 2008

● **Allowed:**

The number increased by 9.1% between December 2007 and June 2008  
The number decreased by 0.2% from June 2007 to June 2008

a/ Allowed, denied, withdrawn/cancelled.

b/ Certified to SSA.

c/ No 3/99 data, so avg'd prev. 6 mos. data.

Source: ABD 216