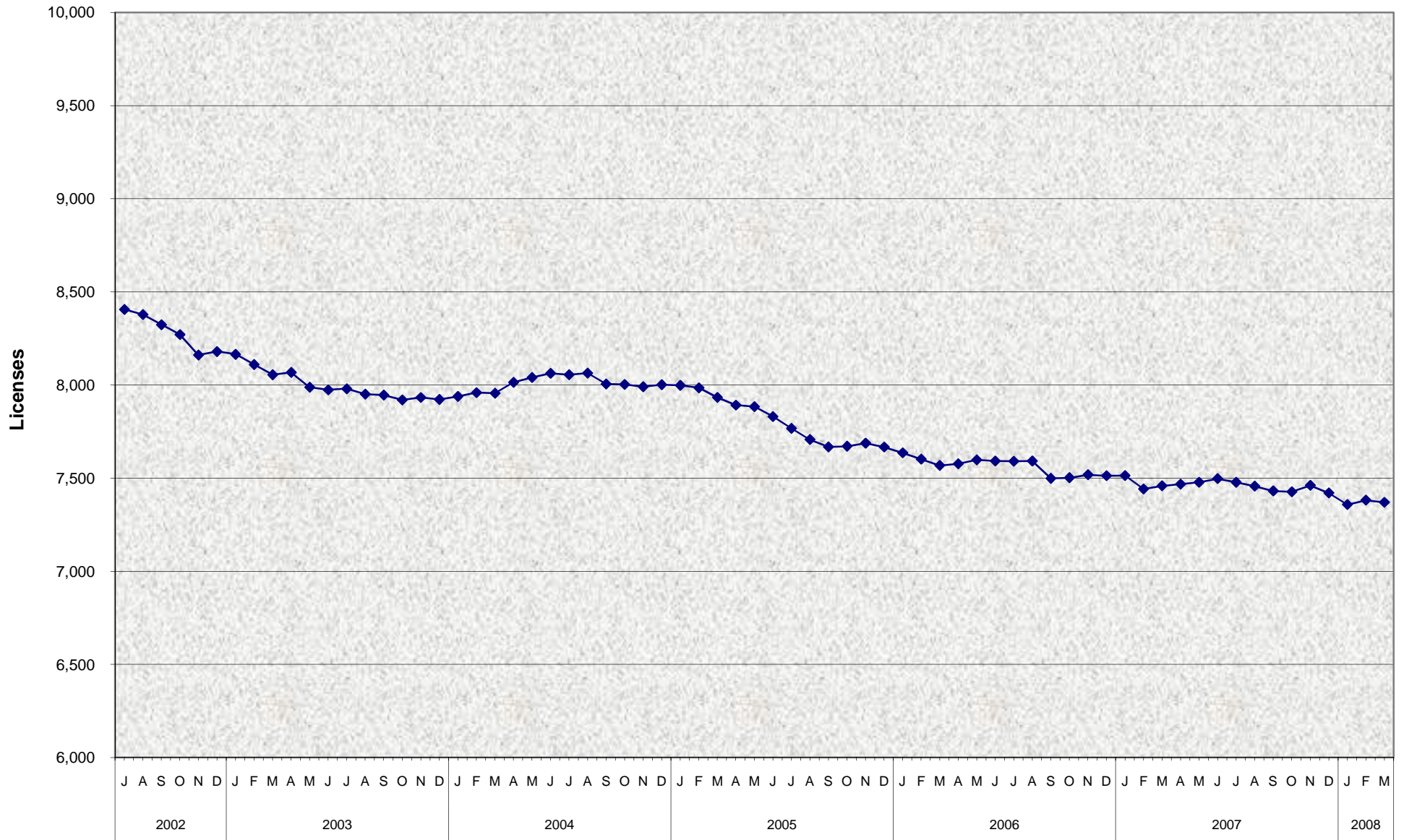


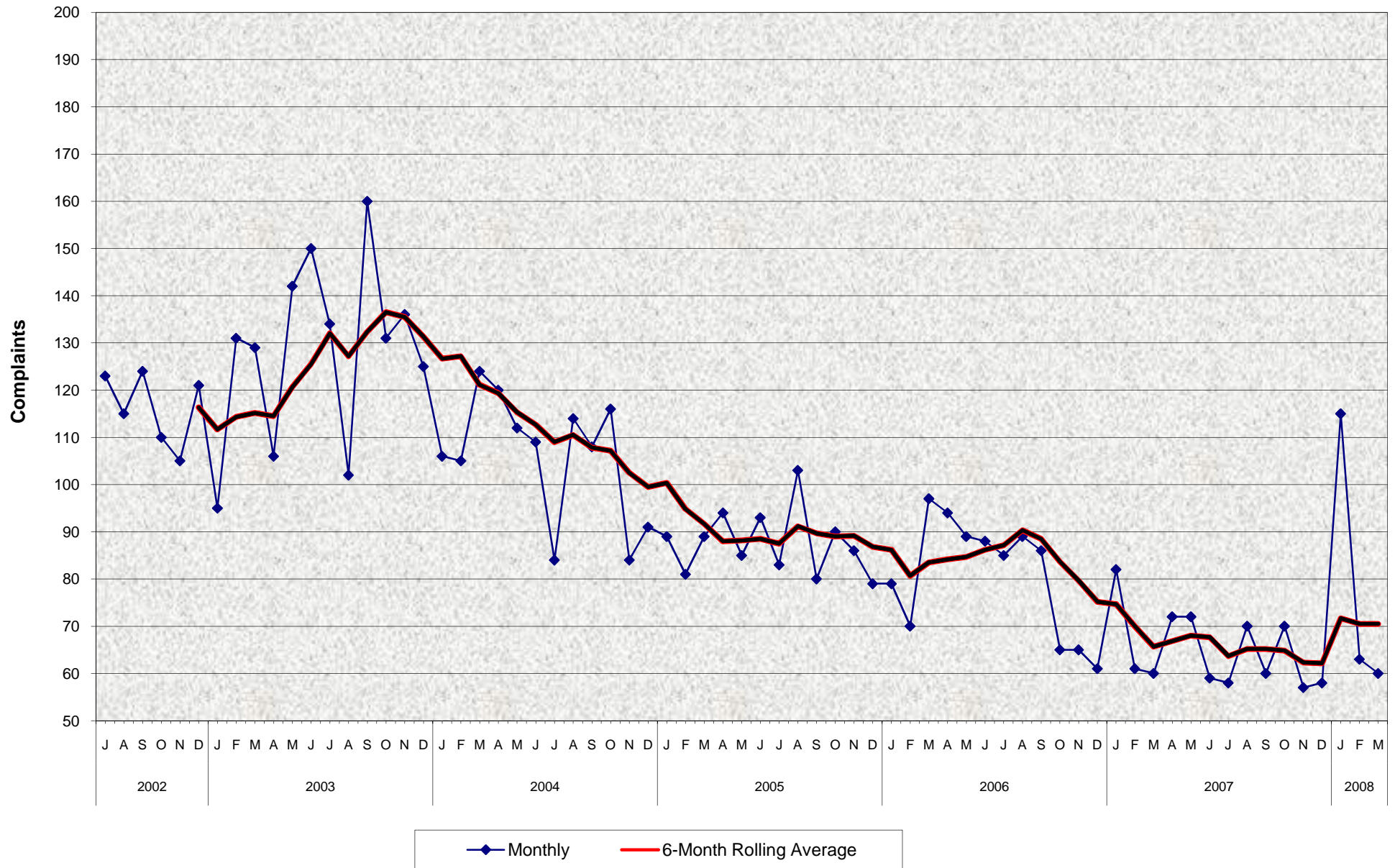
Community Care Licensing Program Licenses In Force For Licensed Foster Family Homes July 2002 - March 2008^{a/ b/}



a/ b/ See footnotes on Page 3.

Source: LIC 181 Licensing of Facilities for Children Monthly Statistical Report, Item 5, Cell 22.

Community Care Licensing Program Complaints Against Licensed Foster Family Homes July 2002 - March 2008^{a/ b/ c/}



a/ b/ c/ See footnotes on Page 3.
 Source: LIC 181 Licensing of Facilities for Children Monthly Statistical Report, Item 14, Cell 49.

Community Care Licensing Program

Licenses in Force and Complaints Against Licensed Foster Family Homes

July 2002 - March 2008^{a/ b/ c/}

MONTHLY PERCENT CHANGE

FY		Jul	% Chg	Aug	% Chg	Sep	% Chg	Oct	% Chg	Nov	% Chg	Dec	% Chg	Jan	% Chg	Feb	% Chg	Mar	% Chg	Apr	% Chg	May	% Chg	Jun	% Chg
02/03	Licenses	8,406	-3.3%	8,378	-0.3%	8,324	-0.6%	8,271	-0.6%	8,161	-1.3%	8,180	0.2%	8,165	-0.2%	8,110	-0.7%	8,055	-0.7%	8,068	0.2%	7,988	-1.0%	7,974	-0.2%
	Complaints	123	6.0%	115	-6.5%	124	7.8%	110	-11.3%	105	-4.5%	121	15.2%	95	-21.5%	131	37.9%	129	-1.5%	106	-17.8%	142	34.0%	150	5.6%
03/04	Licenses	7,980	0.1%	7,951	-0.4%	7,946	-0.1%	7,920	-0.3%	7,933	0.2%	7,922	-0.1%	7,939	0.2%	7,959	0.3%	7,956	0.0%	8,014	0.7%	8,040	0.3%	8,063	0.3%
	Complaints	134	-10.7%	102	-23.9%	160	56.9%	131	-18.1%	136	3.8%	125	-8.1%	106	-15.2%	105	-0.9%	124	18.1%	120	-3.2%	112	-6.7%	109	-2.7%
04/05	Licenses	8,055	-0.1%	8,064	0.1%	8,006	-0.7%	8,003	0.0%	7,991	-0.1%	8,002	0.1%	7,998	0.0%	7,985	-0.2%	7,934	-0.6%	7,892	-0.5%	7,884	-0.1%	7,830	-0.7%
	Complaints	84	-22.9%	114	35.7%	108	-5.3%	116	7.4%	84	-27.6%	91	8.3%	89	-2.2%	81	-9.0%	89	9.9%	94	5.6%	85	-9.6%	93	9.4%
05/06	Licenses	7,767	-0.8%	7,707	-0.8%	7,668	-0.5%	7,671	0.0%	7,688	0.2%	7,667	-0.3%	7,636	-0.4%	7,602	-0.4%	7,568	-0.4%	7,577	0.1%	7,598	0.3%	7,592	-0.1%
	Complaints	83	-10.8%	103	24.1%	80	-22.3%	90	12.5%	86	-4.4%	79	-8.1%	79	0.0%	70	-11.4%	97	38.6%	94	-3.1%	89	-5.3%	88	-1.1%
06/07	Licenses	7,591	0.0%	7,592	0.0%	7,499	-1.2%	7,502	0.0%	7,518	0.2%	7,513	-0.1%	7,514	0.0%	7,442	-1.0%	7,459	0.2%	7,468	0.1%	7,478	0.1%	7,497	0.3%
	Complaints	85	-3.4%	89	4.7%	86	-3.4%	65	-24.4%	65	0.0%	61	-6.2%	82	34.4%	61	-25.6%	60	-1.6%	72	20.0%	72	0.0%	59	-18.1%
07/08	Licenses	7,478	-0.3%	7,457	-0.3%	7,431	-0.3%	7,427	-0.1%	7,461	0.5%	7,420	-0.5%	7,358	-0.8%	7,382	0.3%	7,370	-0.2%						
	Complaints	58	-1.7%	70	20.7%	60	-14.3%	70	16.7%	57	-18.6%	58	1.8%	115	98.3%	63	-45.2%	60	-4.8%						

TRENDS

- The number of licensed Foster Family Homes decreased 0.2% between February 2008 and March 2008.
- The number of licensed Foster Family Homes decreased 1.2% between March 2007 and March 2008.
- The number of complaints against Licensed Foster Family Homes decreased 4.8% between February 2008 and March 2008.
- The number of complaints against Licensed Foster Family Homes remained the same between March 2007 and March 2008.

a/ As of March 2008, 41 counties are under contract with the California Department of Social Services (CDSS) to license Foster Family Homes and Large and Small Child Care Homes. CDSS conducts the licensing requirements for the remaining 17 counties. See page 4.

b/ Prior month data used: San Bernardino and Tulare (10/04 for 11/04), Ventura (11/04 for 12/04) and Placer (4/05 for 5/05).

c/ Complaint data became available for Contra Costa County effective April 2005 and Santa Clara County effective August 2003.

Community Care Licensing Program
Counties that License Foster Family Homes and Large and Small Family Child Care Homes
July 2002 - March 2008

County	State Calendar Year						
	2002	2003	2004	2005	2006	2007	2008
Statewide	42	42	42	42	41	41	41
Alameda	Yes	Yes	Yes	Yes	Yes	Yes	Yes
Alpine							
Amador							
Butte	Yes	Yes	Yes	Yes	Yes	Yes	Yes
Calaveras							
Colusa							
Contra Costa	Yes	Yes	Yes	Yes	Yes	Yes	Yes
Del Norte	Yes ^{a/}	Yes ^{a/}	Yes ^{a/}	Yes ^{a/}	Yes ^{a/}	Yes ^{a/}	Yes ^{a/}
El Dorado	Yes	Yes	Yes	Yes	Yes	Yes	Yes
Fresno	Yes ^{a/}	Yes ^{a/}	Yes	Yes	Yes	Yes	Yes
Glenn	Yes	Yes	Yes	Yes	Yes	Yes	Yes
Humboldt							
Imperial	Yes	Yes	Yes	Yes	Yes	Yes	Yes
Inyo	Yes ^{a/}	Yes ^{a/}	Yes ^{a/}	Yes ^{a/}	Yes ^{a/}	Yes ^{a/}	Yes ^{a/}
Kern	Yes	Yes	Yes	Yes	Yes	Yes	Yes
Kings	Yes	Yes	Yes	Yes	Yes	Yes	Yes
Lake							
Lassen							
Los Angeles							
Madera							
Marin	Yes ^{a/}	Yes ^{a/}	Yes ^{a/}	Yes ^{a/}	Yes ^{a/}	Yes	Yes
Mariposa	Yes	Yes	Yes	Yes	Yes	Yes	Yes
Mendocino	Yes ^{a/}	Yes ^{a/}	Yes ^{a/}	Yes ^{a/}	Yes ^{a/}	Yes ^{a/}	Yes ^{a/}
Merced	Yes	Yes	Yes	Yes	Yes	Yes	Yes
Modoc							
Mono							
Monterey	Yes	Yes	Yes	Yes	Yes	Yes	Yes
Napa	Yes	Yes	Yes	Yes	Yes	Yes	Yes
Nevada							
Orange	Yes	Yes	Yes	Yes	Yes	Yes	Yes
Placer	Yes	Yes	Yes	Yes	Yes	Yes	Yes
Plumas							
Riverside							
Sacramento	Yes ^{a/}	Yes ^{a/}	Yes ^{a/}	Yes ^{a/}	Yes ^{a/}	Yes ^{a/}	Yes ^{a/}
San Benito	Yes	Yes	Yes	Yes	Yes	Yes	Yes
San Bernardino	Yes	Yes	Yes	Yes	Yes	Yes	Yes
San Diego	Yes	Yes	Yes	Yes	Yes	Yes	Yes
San Francisco	Yes	Yes	Yes	Yes	Yes	Yes	Yes
San Joaquin	Yes	Yes	Yes	Yes	Yes	Yes	Yes
San Luis Obispo	Yes	Yes	Yes	Yes	Yes	Yes	Yes
San Mateo	Yes	Yes	Yes	Yes	Yes	Yes	Yes
Santa Barbara	Yes	Yes	Yes	Yes	Yes	Yes	Yes
Santa Clara	Yes	Yes	Yes	Yes	Yes	Yes	Yes
Santa Cruz	Yes ^{a/}	Yes	Yes	Yes	Yes	Yes	Yes
Shasta	Yes	Yes	Yes	Yes	Yes	Yes	Yes
Sierra							
Siskiyou							
Solano	Yes	Yes	Yes	Yes	Yes	Yes	Yes
Sonoma	Yes	Yes	Yes	Yes	Yes	Yes	Yes
Stanislaus	Yes	Yes	Yes	Yes	Yes	Yes	Yes
Sutter	Yes	Yes	Yes	Yes	Yes	Yes	Yes
Tehama	Yes ^{a/}	Yes ^{a/}	Yes ^{a/}	Yes ^{a/}	Yes ^{a/}	Yes ^{a/}	Yes ^{a/}
Trinity	Yes	Yes	Yes	Yes	Yes	Yes	Yes
Tulare	Yes	Yes	Yes	Yes	Yes	Yes	Yes
Tuolumne	Yes	Yes	Yes	Yes	Yes	Yes	Yes
Ventura	Yes	Yes	Yes	Yes	Yes	Yes	Yes
Yolo	Yes	Yes	Yes	Yes			
Yuba	Yes	Yes	Yes	Yes	Yes	Yes	Yes

a/ Counties that also licensed Large and Small Family Child Care Homes.
Source: LIC 181 Licensing of Facilities for Children Monthly Statistical Report