

INSTALLING QUERY MANAGER and MARPLOT

The following instruction will guide you through the steps necessary for successful installation of Query Manager 2.6, MARPLOT 3.3 and the Watershed Database and Maps. Please read and follow each of the steps.

Download the application installer, data and maps from our download site:

<http://response.restoration.noaa.gov/watersheddownloads>

Note: This process involves the installation of a software application. Please make sure that you have administrator privileges or check with your IT administrator to ensure that permissions to install software have not been blocked for users in your organization.

1. Uninstall previously installed versions of Query Manager and MARPLOT:

This uninstalls the application files but will leave behind any user generated or saved files within the Query Manager and MARPLOT folders.

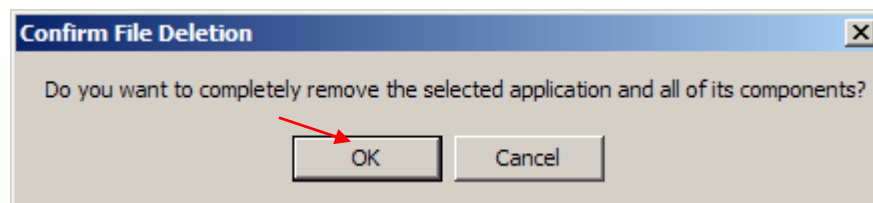
Note: If you would like to archive existing database versions, we suggest copying the data folder (wr_data) and pasting it under a folder other than c:\qm26win.

- Open **Add or Remove Programs**, click **Start**, point to **Settings**, click **Control Panel**, and then click **Add or Remove Programs**. Scroll to the Query Manager entry and click the remove button.
- Next, navigate to the ../qm26win/MARPLOT and **delete the entire MARPLOT folder.**

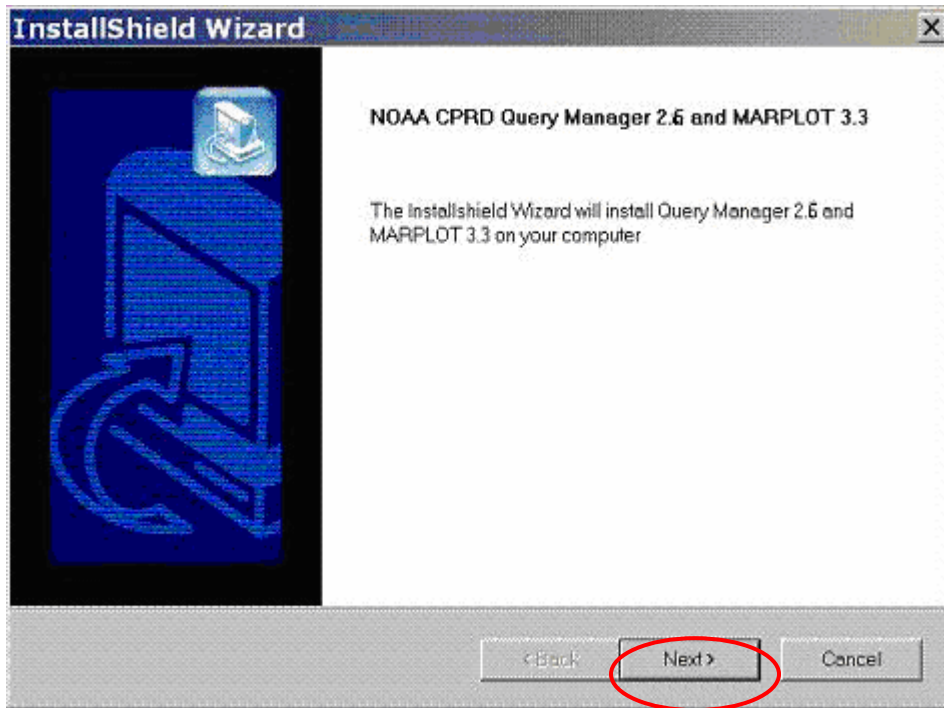
2. Close ALL programs, navigate to the location where you have saved your downloaded files. Begin Installation by double-clicking the QueryManager/MARPLOT installer:

- QM26WIN.exe

If you did not uninstall prior instances of Query Manager, the following message will be displayed:



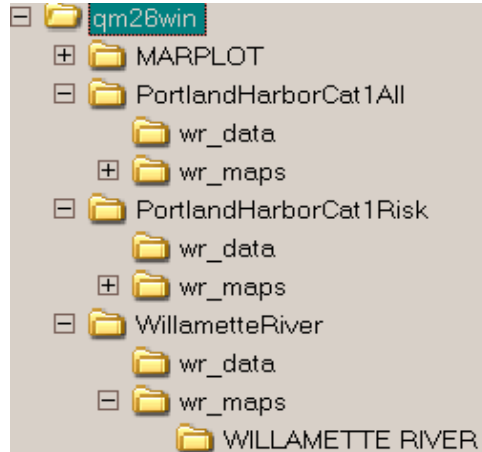
- Click the OK button to proceed with the uninstall of Query Manager and MARPLOT. Then repeat the installation attempt by double-clicking on **QM26WIN.exe** a second time.
- Follow the prompts of the InstallShield Wizard. We **strongly** recommend accepting the default folders and settings. If your main drive has a designation other than C, change the drive letter but keep the folder name the same (e.g. D:\QM26WIN).



3. Install Data and Maps:

Double-click on each of the data and maps self-extracting zip files. Choose the default folders using the same drive letter where you installed the applications in step 2 above.

Once you have installed the applications and extracted the data and maps, you should see a directory structure similar to the one shown here:



4. Run Query Manager:

Open Query Manager by using the shortcut placed on your desktop during the installation process (double-click on the icon) or by going to your start menu and choosing Query Manager.