

Temporary  
Assistance for  
Needy  
Families

*Characteristics Survey*  
*Federal Fiscal Year 1998*  
*October 1997 through September 1998*

---

California Department of Social Services  
Program Planning and Performance Division  
CalWORKs and Food Stamps Data Systems  
Design Taskforce

**TEMPORARY ASSISTANCE  
FOR  
NEEDY FAMILIES**

**A Characteristics Survey  
on the  
Social and Economic Characteristics  
of  
Families Receiving Aid**

**Federal Fiscal Year 1998  
October 1997 through September 1998**

**Prepared By**

**The California Department of Social Services**

**CalWORKs and Food Stamps  
Data Systems Design Taskforce**

Additional copies of this publication may be obtained on the  
California Department of Social Services web site  
at "<http://www.dss.cahwnet.gov>"  
or upon written request to:

Warehouse  
California Department of Social Services  
P.O. Box 22429  
Sacramento, CA 95822-3799

*Distributed Under the Library Distribution Act*

## TABLE OF CONTENTS

### Introduction

Forward.....	1
The TANF Program.....	1
Survey Display.....	2
Survey Document .....	2
Sampling Information.....	2
Data Presentation.....	3
Reliability of the Data.....	3
Recipient Profile .....	4

### Case Data

Number of Persons in the Assistance Unit .....	5
Number of Children in the Assistance Unit.....	7
Number of Children in the AU with <u>No</u> Adult Recipients (Child-Only) .....	9
Number of Children in the AU for Cases with <u>One</u> Adult Recipient .....	11
Number of Children in the AU for Cases with <u>Two</u> Adult Recipients .....	13
TANF Families Receiving Food Stamps.....	15
Families Receiving Subsidized Housing & Medi-Cal Benefits.....	17
Families Receiving Cash Assistance.....	19
Reasons for Grant Reduction .....	21

### Person Data

Age of Recipients.....	23
Race of Recipients.....	27
Marital Status of Adults.....	29
Relationship to the TANF Head of Household.....	31
Teen Parent Status.....	33
Education Level .....	35
Citizenship Status.....	37
Disability Benefits .....	39
Employment Status.....	41
Work Participation Status .....	43
Income .....	45

## TABLE OF CONTENTS

### TANF Tables

<u>Table Number</u>	<u>Title</u>	<u>Page</u>
1	Number of Persons in the Assistance Unit.....	6
2	Number of Children in the Assistance Unit.....	8
3	No. of Children in AU with <u>No</u> Adult Recipients (Child-Only).....	10
4	No. of Children in AU for Cases with <u>One</u> Adult Recipient.....	12
5	No. of Children in AU for Cases with <u>Two</u> Adult Recipients .....	14
6	TANF Families Receiving Food Stamps.....	16
7	Families Receiving Subsidized Housing.....	18
7A	Families Receiving Medi-Cal Benefits.....	18
8	Families Receiving Cash Assistance.....	20
9	Reasons for Grant Reduction.....	22
10	Age of Adults in the Assistance Unit.....	24
11	Age of Children in the Assistance Unit.....	24
12	Youngest Recipient Child by Age Group.....	26
13	Race of Adults in the Assistance Unit.....	28
14	Race of Children in the Assistance Unit.....	28
15	Marital Status of Adults in the Assistance Unit.....	30
16	Adult Recipients by Relationship to TANF Head of Household...	32
17	Child Recipients by Relationship to TANF Head of Household..	32
18	Teen Parent Recipients with Adult Status.....	34
19	Teen Parent Recipients with Child Status.....	34
20	Adult Recipients by Education Level.....	36
21	Child Recipients by Education Level.....	36
22	Adult Recipients by Citizenship Status.....	38
23	Child Recipients by Citizenship Status.....	38
24	Adult Recipients Receiving Federal Disability Benefits.....	40
25	Child Recipients Receiving Federal Disability Benefits.....	40
26	Adult Recipients by Employment Status.....	42
27	Adult Recipients by Work Participation Status.....	44
28	Adult Recipients by Type of Income.....	46
29	Child Recipients with Unearned Income.....	46

## FORWARD

This report presents data on various social and economic characteristics of families who received aid from the Temporary Assistance for Needy Families (TANF) Program in California. The data reflects general characteristics of this population and does not measure TANF work requirements. Results are based on information obtained from the County Performance Sample (CPS) survey conducted by the California Department of Social Services for Federal Fiscal Year (FFY) 1998, October 1997 through September 1998. This publication represents selected characteristics from the survey process; additional data will be published at a future date.

On August 22, 1996, President Clinton signed into law the Personal Responsibility and Work Opportunity Reconciliation Act (PRWORA) (Public Law 104-193). This new welfare reform law established the TANF program that replaced the Aid to Families with Dependent Children (AFDC) program. Many of the characteristics of past AFDC surveys will remain comparable to data in this new federal program. Therefore, both acronyms will be seen in this document depending on whether past or current cases are being described.

The TANF program that began November 1, 1996 was not implemented in California until January 1, 1998 through enabling legislation. This legislation created the California Work Opportunity and Responsibility to Kids (CalWORKs) Program.

## THE TANF PROGRAM

The TANF program was built on the following five principles that are the pillars of the welfare reform strategy:

- Welfare should not be a way of life;
- Work not welfare;
- No more welfare for noncitizens and felons;
- Power and flexibility to the states; and
- Personal responsibility to halt rising illegitimacy rates.

An average monthly caseload of 707,018 cases received aid from the TANF program in California during the months of October 1997 through September 1998. This caseload represents over 2.1 million people and includes 1,495,000 children and 627,000 adults. The average monthly cost of the cash grants paid out during this time period was approximately \$297 million.

An Assistance Unit (AU) is composed of those persons in the family who receive, or are eligible to receive, a TANF grant. A "household" differs from an AU in that the household includes all persons in the same dwelling unit regardless of their relationship to members of the AU or their eligibility for TANF. A TANF AU is also referred to as a "case."

## SURVEY DISPLAY

When appropriate, the tables in this publication compare FFY 1998 data to tables or ad hoc reports from the October 1996 AFDC Characteristics Survey as this survey is the most recent display of AFDC characteristics data available. **It should be noted when comparing the two sets of figures, the October 1996 information is point-in-time data for that month only, and FFY 1998 data is an average of the twelve months from October 1997 through September 1998.**

Also displayed with some of the tables, are ten-year trend charts. This data will assist in analyzing trends in some of the characteristics that have been tracked for the past decade. **Please note that when reviewing the ten-year trend data for the AFDC/TANF population, changes in the general population during the ten years must be considered.**

## SURVEY DOCUMENT

Prior to the passage of PRWORA, CPS staff conducted Quality Control (QC) reviews for the AFDC and Food Stamps Programs. The tool used to accomplish this process, the Quality Control Information System (QCIS), has been modified and expanded to collect data elements and is currently known as Q5. Since the passage of PRWORA, data are collected by CPS staff using Q5 for federal reporting requirements, policy development, program evaluation, participation rate calculations and characteristic surveys.

Data in this report reflect characteristics of families receiving TANF cash or services at least one of the months during the time period of October 1997 through September 1998.

Information was derived from review of case records, third party verifications and recipient interviews which were conducted as a means of verifying data in the files and to provide additional information that may not be found in the case records. The Employment Development Department (EDD) base wage file was used to supplement these data and the results are reflected in tables 26 and 28.

## SAMPLING INFORMATION

The sample cases for the TANF portion of this survey were drawn from the Department of Health Services' Medi-Cal Eligibility Data System Monthly Extract File. This file is a continually updated listing of all persons in California who are eligible for TANF and receive Medi-Cal cards in a particular month.

Each month, a random sample of open cases is drawn from the 19 largest counties (which represent approximately 90% of the statewide caseload) and an additional sample is drawn from the remaining 39 counties as a whole. The total sample for FFY 1998 consisted of 7,101 TANF cases.

### DATA PRESENTATION

The data represented by tables in this publication were developed using statistical methodology to expand the number of sample cases to the average of the actual number of TANF cases that received cash or services during the twelve-month period. Since the sample was drawn from cases and not persons, the person data was also expanded using statistically derived case weights. Due to sample expansion, the frequencies may or may not be the same as those found in other reports. Also, because of rounding, the frequencies may or may not add to the totals vertically and/or horizontally. The differences are small, however, and insignificant.

Results of this survey are displayed in bold type and are on the right of tables that also display data from the October 1996 AFDC Characteristics Survey. When appropriate, the two sets of data are compared and the difference between the figures is shown on the far right column, titled "Percent or Amount of Change." When there is no comparable October 1996 survey data, the FFY 1998 data is displayed on its own.

### RELIABILITY OF THE DATA

Because the data collection method used for this publication is a new process, it is continuously being adjusted and improved. All attempts have been made to correct known inconsistencies.

Since the information presented in the tables was based on a sample, it may differ somewhat from figures that would have been obtained if a complete census had been taken. Comparison of sample data with available actual data and with data from comparable prior studies shows the information to be quite reliable. **However, as with all sample data, care should be exercised in the interpretation of figures when based on a relatively small number of cases.**

The TANF survey is based upon a random sample selection process that yields first level data with a confidence level of 95 percent and a precision of plus or minus 2 percent.

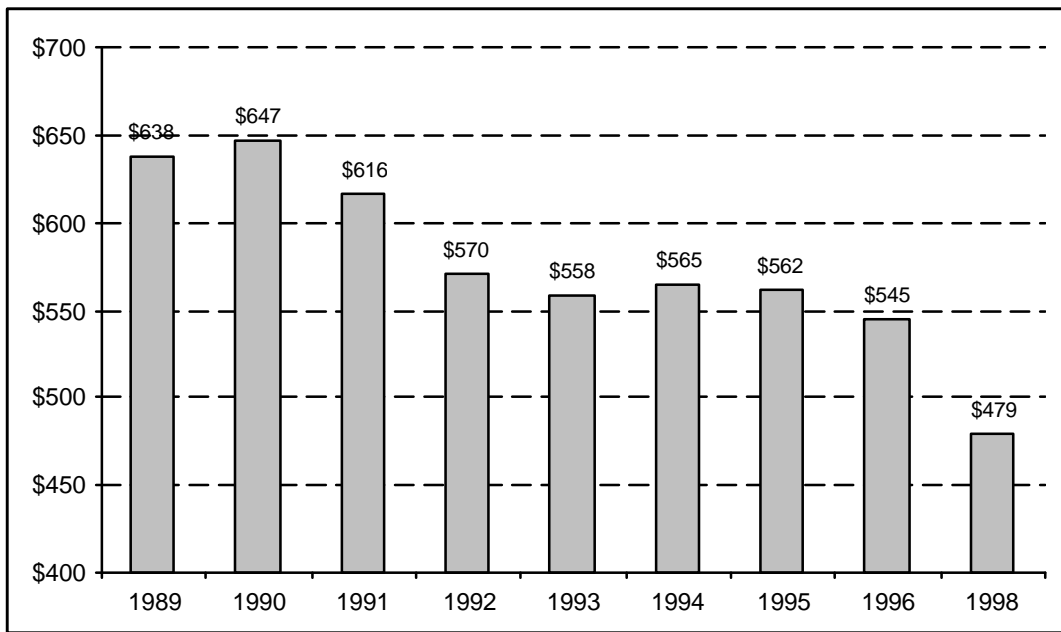


### RECIPIENT PROFILE

The TANF population has a wide range of social and economic characteristics. The following is a selection of some of the characteristics that are reflective of the data collected for this survey. A ten-year trend chart on one of these characteristics is also displayed:

- Avg. number/aided persons per case: 3 persons
- Avg. number/aided children per case: 2.1 children
- Average age of adult: 34 years
- Average age of child: 8.2 years
- Citizenship status: U.S. Citizens - Adults, 73.6%,  
Children, 94.3%
- Proportion of adults never married : 46.2%
- Proportion of adults employed: 30.3%
- Years of education for adults: 50.5% have 12 or more years
- Average TANF grant amount: \$479 per month (see below)

Average Monthly Cash Grant per Case



Source of trend data: 1989 - 1996, AFDC Characteristics Surveys; 1997, data unavailable; 1998, current data.

A more detailed account of recipient data, plus additional characteristics, can be found on the following pages.

## Case Data

The following reports display characteristics at the **case** level.

*Table 1*

Number of Persons  
in the  
Assistance Unit

- 3 The average number of persons per AU remains at three.
- 3 The average monthly caseload for the fiscal year decreased by 17.8% since October 1996.
- 3 In 1995, California's AFDC caseload was at its highest point in ten years.

One-person AUs make up 11% of the caseload. Some of the reasons one-person AUs may occur include:

- 3 An aided child has ineligible parents;
- 3 The child lives with a nonneedy caretaker relative;
- 3 Parents and/or children are aided under Supplemental Security Income/State Supplemental Payment (SSI/SSP) program; or
- 3 The mother is pregnant and has no other children.

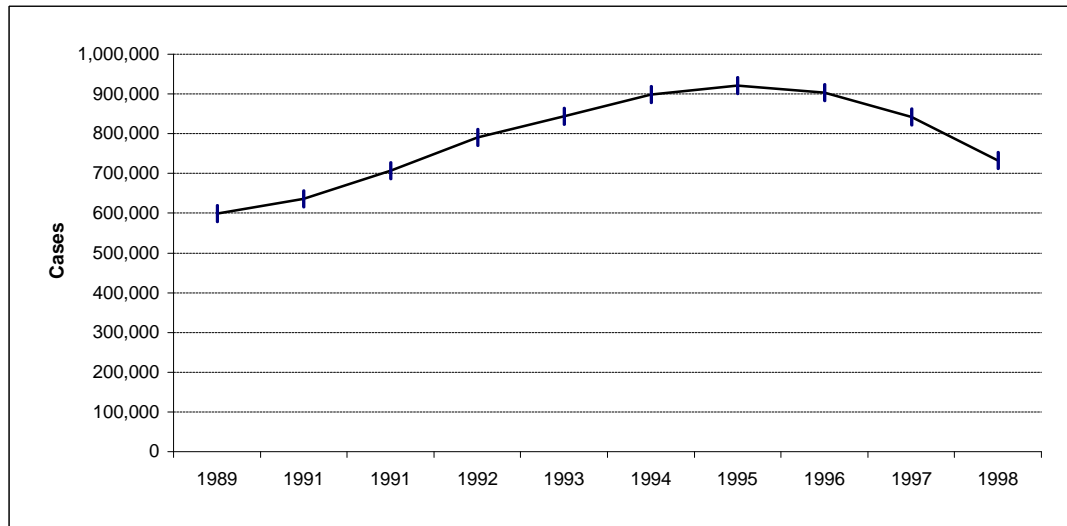
Temporary Assistance for Needy Families (TANF)  
 Characteristics Survey  
 Federal Fiscal Year 1998

Table 1

Number of Persons in the Assistance Unit

Number of Persons	10/96 AFDC Characteristics Survey		FFY 98: 10/97-9/98 12-Month Average		Percent or Amount of Change
	Cases	Percent	Cases	Percent	
TOTAL CASELOAD	<u>860,016</u>	<u>100.0</u>	<u>707,018</u>	<u>100.0</u>	-17.8
One	83,024	9.7	<b>78,109</b>	<b>11.0</b>	1.3
Two	294,607	34.3	<b>237,026</b>	<b>33.5</b>	-0.8
Three	232,557	27.0	<b>187,193</b>	<b>26.5</b>	-0.5
Four	130,150	15.1	<b>112,853</b>	<b>16.0</b>	0.9
Five	72,180	8.4	<b>51,670</b>	<b>7.3</b>	-1.1
Six	31,276	3.6	<b>22,321</b>	<b>3.2</b>	-0.5
Seven	6,933	0.8	<b>9,214</b>	<b>1.3</b>	0.5
Eight	3,176	0.4	<b>3,340</b>	<b>0.5</b>	0.1
Nine	3,893	0.5	<b>2,819</b>	<b>0.4</b>	-0.1
Ten and Over	2,219	0.3	<b>2,472</b>	<b>0.3</b>	0.1
Unknown	0	0.0	<b>152</b>	<b>0.0</b>	N/A
AVERAGE	3.0		3.0		0.0

Average Monthly AFDC Caseload



Source: California Department of Social Services CA 237 Caseload Movement Reports by State Fiscal Year.

*Table 2*

Number of Children  
in the  
Assistance Unit

- 3 An AU could contain no children because a mother is pregnant and has no other children or the child is aided under the SSI/SSP program.
- 3 The largest percentage of cases, 37.8%, contain one child.
- 3 The average number of aided children per case continues to be 2.1.

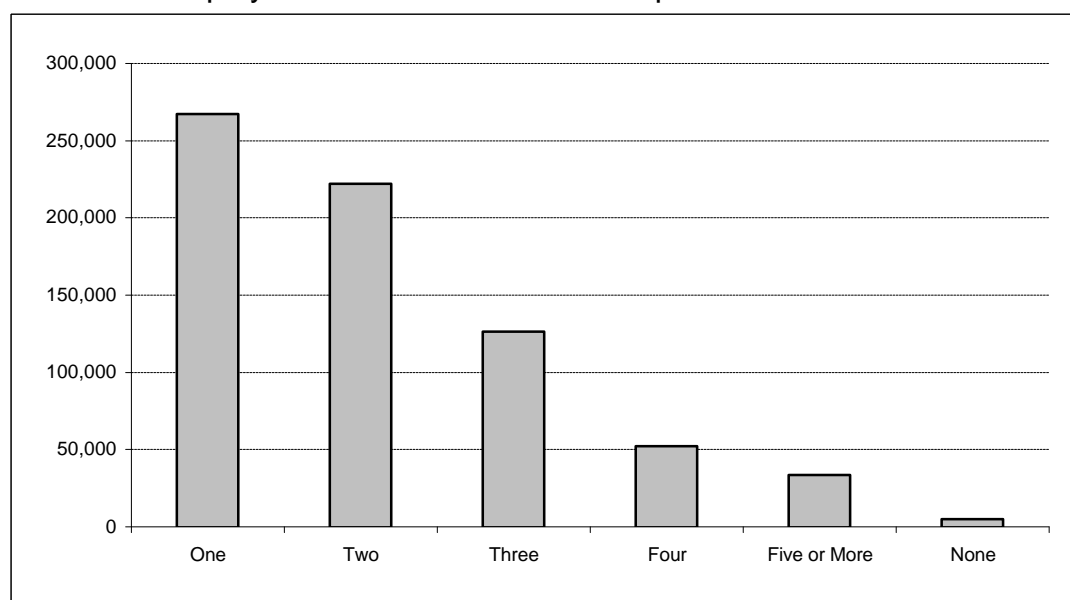
Temporary Assistance for Needy Families (TANF)  
 Characteristics Survey  
 Federal Fiscal Year 1998

Table 2

Number of Children in the Assistance Unit

Number of Children	10/96 AFDC Characteristics Survey		FFY 98: 10/97-9/98 12-Month Average		Percent or Amount of Change
	Cases	Percent	Cases	Percent	
TOTAL CASELOAD	<u>860,016</u>	<u>100.0</u>	<b><u>707,018</u></b>	<b><u>100.0</u></b>	-17.8
One	338,347	39.3	<b>267,387</b>	<b>37.8</b>	-1.5
Two	277,079	32.2	<b>222,153</b>	<b>31.4</b>	-0.8
Three	138,204	16.1	<b>126,399</b>	<b>17.9</b>	1.8
Four	60,975	7.1	<b>52,223</b>	<b>7.4</b>	0.3
Five or More	38,241	4.4	<b>33,732</b>	<b>4.8</b>	0.4
None	7,169	0.8	<b>5,124</b>	<b>0.7</b>	-0.1
AVERAGE	2.1		2.1		0.0

Display of the Number of Children per Assistance Unit



Source: FFY 98 data

*Table 3*

Number of Children in the Assistance Unit  
with  
No Adult Recipients (Child-Only)

- 3 The ratio of child-only cases to the total caseload has increased by 3.3% since October 1996. However, since the overall caseload has decreased, there are 8,177 fewer child-only cases than in October 1996.
- 3 There are more than 333,000 children, 22.3% of all children, in child-only cases. (The number of children multiplied by the number of cases.)

Some reasons there may be no adult in the AU include:

- 3 The aided child has ineligible parents;
  - 3 The aided child is living with a nonneedy caretaker relative; or
  - 3 The parent of the aided child is aided under the SSI/SSP program.
- 
-

Temporary Assistance for Needy Families (TANF)  
 Characteristics Survey  
 Federal Fiscal Year 1998

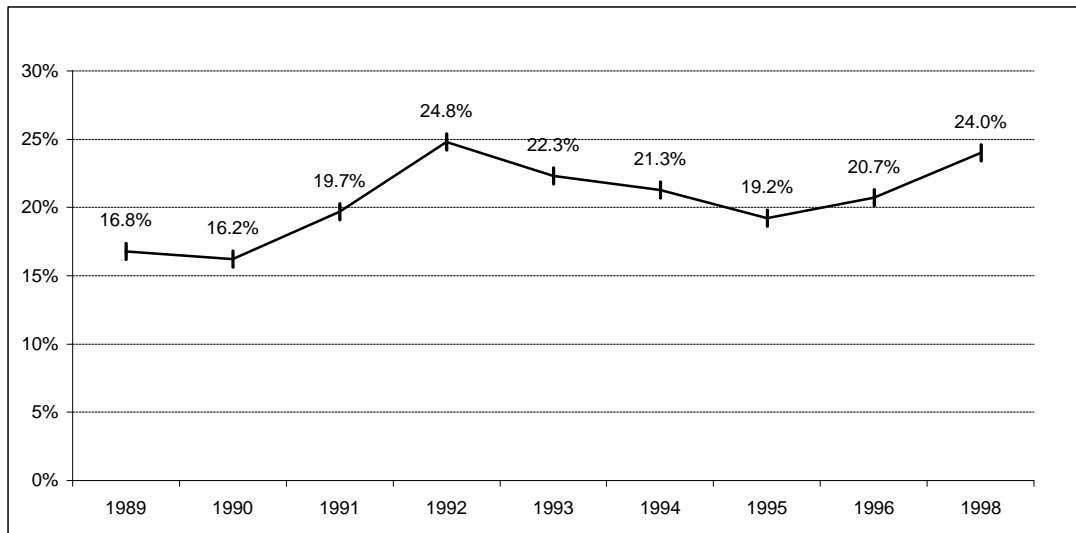
Table 3

Number of Children in the Assistance Unit  
 with **No** Adult Recipients (Child-Only)

Number of Children	10/96 AFDC Characteristics Survey - Ad Hoc		FFY 98: 10/97-9/98 12-Month Average		Percent or Amount of Change
	Cases	Percent	Cases	Percent	
TOTAL CASELOAD	860,016	100.0	707,018	100.0	-17.8
CASES WITH ADULTS	682,086	79.3	537,265	76.0	
CASES WITH NO ADULTS	177,930	20.7	169,753	24.0	3.3
One	75,855	42.6	69,452	40.9	-1.7
Two	60,665	34.1	57,029	33.6	-0.5
Three	26,662	15.0	28,858	17.0	2.0
Four	7,647	4.3	10,193	6.0	1.7
Five or More	7,101	4.0	4,188	2.5	-1.5
None *	0	0.0	33	0.0	N/A
AVERAGE	1.9		2.0		0.1

\* Can reflect a case where the child is aided under SSI/SSP or the mother is pregnant with no other children.

Percentage of Cases That Are Child-Only



Source of trend data: 1989 - 1996, AFDC Characteristics Surveys; 1997, data unavailable; and 1998, current survey.



*Table 4*

Number of Children in the Assistance Unit  
for  
Cases with One Adult Recipient

- 3 One adult recipient includes an aided parent or a needy caretaker relative.
  - 3 There are more than 918,000 children, 61.4% of all children, in cases with one aided adult. (The number of children multiplied by the number of cases.)
  - 3 Most AUs with one aided adult contain one child although the overall average number of children is 2.1.
  - 3 The percentage of cases containing three children has increased, while the percentage with one and two children has decreased.
  - 3 Cases can contain no children because the child is aided by SSI/SSP or a mother is pregnant and has no other children.
- 
-

Temporary Assistance for Needy Families (TANF)  
 Characteristics Survey  
 Federal Fiscal Year 1998

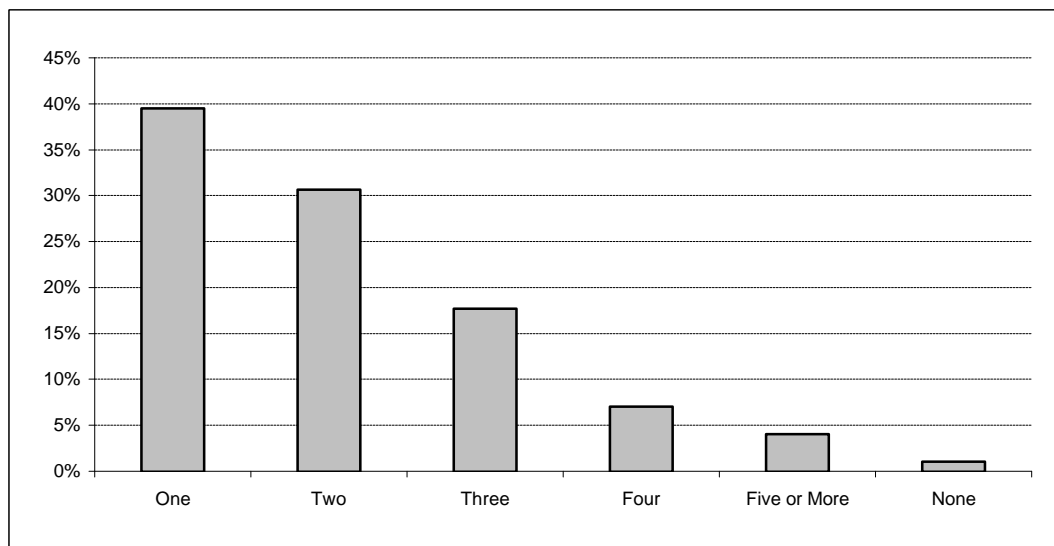
Table 4

Number of Children in the Assistance Unit  
 for Cases with **One** Adult Recipient

Number of Children	10/96 AFDC Characteristics Survey - Ad Hoc		FFY 98: 10/97-9/98 12-Month Average		Percent or Amount of Change
	Cases	Percent	Cases	Percent	
TOTAL CASELOAD	<u>860,016</u>	<u>100.0</u>	<b><u>707,018</u></b>	<b><u>100.0</u></b>	-17.8
OTHER THAN ONE ADULT	301,182	35.0	<b>259,605</b>	<b>36.7</b>	
CASES WITH ONE ADULT	<u>558,834</u>	65.0	<b><u>447,413</u></b>	<b>63.3</b>	<b><u>100.0</u></b>
One	233,942	41.9	<b>176,792</b>	<b>39.5</b>	-2.3
Two	177,345	31.7	<b>137,157</b>	<b>30.7</b>	-1.1
Three	83,434	14.9	<b>79,236</b>	<b>17.7</b>	2.8
Four	39,020	7.0	<b>31,455</b>	<b>7.0</b>	0.0
Five or More	17,924	3.2	<b>18,143</b>	<b>4.1</b>	0.8
None *	7,169	1.3	<b>4,629</b>	<b>1.0</b>	-0.2
AVERAGE	2.0		<b>2.1</b>		0.1

\* Can reflect a case where the child is aided under SSI/SSP or the Mother is pregnant with no other children.

Display of the Number of Children in Cases with One Adult Recipient



Source: FFY 98 data.

*Table 5*

Number of Children in the Assistance Unit  
for  
Cases with **Two** Adult Recipients

- 3 Most AUs with two aided adults contain two children although the overall average number of children remains unchanged from October 1996 at 2.7.
- 3 There are more than 243,000 children, 16.3% of all children, in cases with two aided adults. (The number of children multiplied by the number of cases.)
- 3 The category of five or more children is shown as having the largest percentage increase.

Temporary Assistance for Needy Families (TANF)  
 Characteristics Survey  
 Federal Fiscal Year 1998

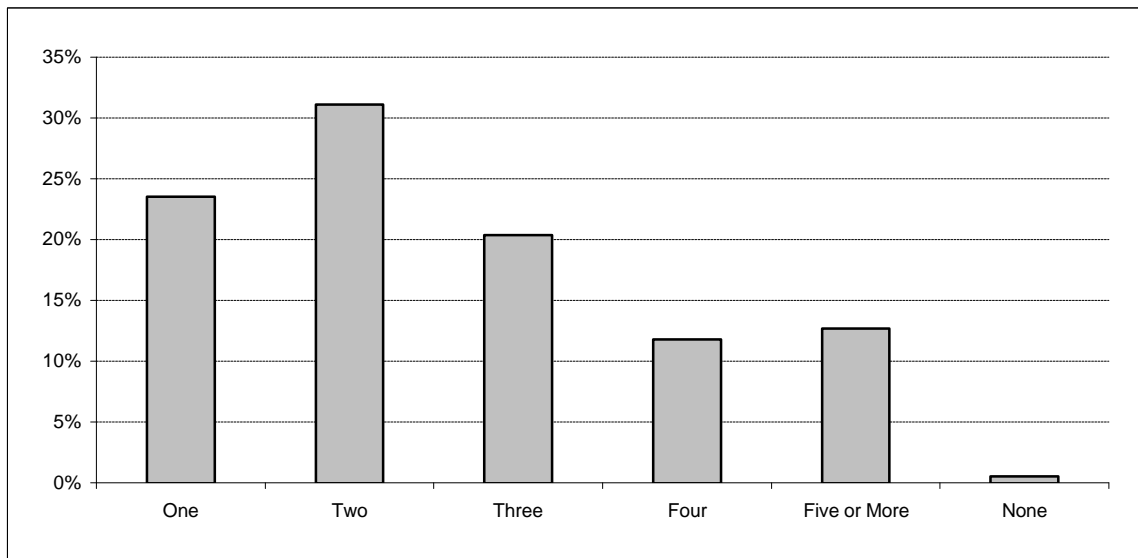
Table 5

Number of Children in the Assistance Unit  
 for Cases with **Two** Adult Recipients

Number of Children	10/96 AFDC Characteristics Survey - Ad Hoc		FFY 98: 10/97-9/98 12-Month Average		Percent of Amount of Change
	Cases	Percent	Cases	Percent	
TOTAL CASELOAD	860,016	100.0	<b>707,018</b>	<b>100.0</b>	-17.8
OTHER THAN TWO ADULTS	736,764	85.7	<b>617,167</b>	<b>87.3</b>	
CASES WITH TWO ADULTS	<u>123,252</u>	14.3	<u>89,851</u>	12.7	<u>100.0</u>
One	28,550	23.2	<b>21,143</b>	<b>23.5</b>	0.4
Two	39,069	31.7	<b>27,967</b>	<b>31.1</b>	-0.6
Three	28,107	22.8	<b>18,305</b>	<b>20.4</b>	-2.4
Four	14,309	11.6	<b>10,574</b>	<b>11.8</b>	0.2
Five or More	13,217	10.7	<b>11,400</b>	<b>12.7</b>	2.0
None *	0	0.0	<b>462</b>	<b>0.5</b>	N/A
AVERAGE		2.7		2.7	0.0

\* Can reflect a case where the child is aided under SSI/SSP or the mother is pregnant with no other children.

Display of the Number of Children in Cases with Two Adult Recipients



Source: FFY 98 data.

*Table 6*

TANF Families  
Receiving  
Food Stamps

- 3 The monthly average food stamp grant has increased by \$5 since October 1996.
- 3 TANF eligible families are categorically eligible for food stamps although some choose not to receive them.
- 3 The percentage of TANF cases receiving food stamps has declined 5.3%.
- 3 A person receiving a TANF sanction may still be eligible to receive food stamps.

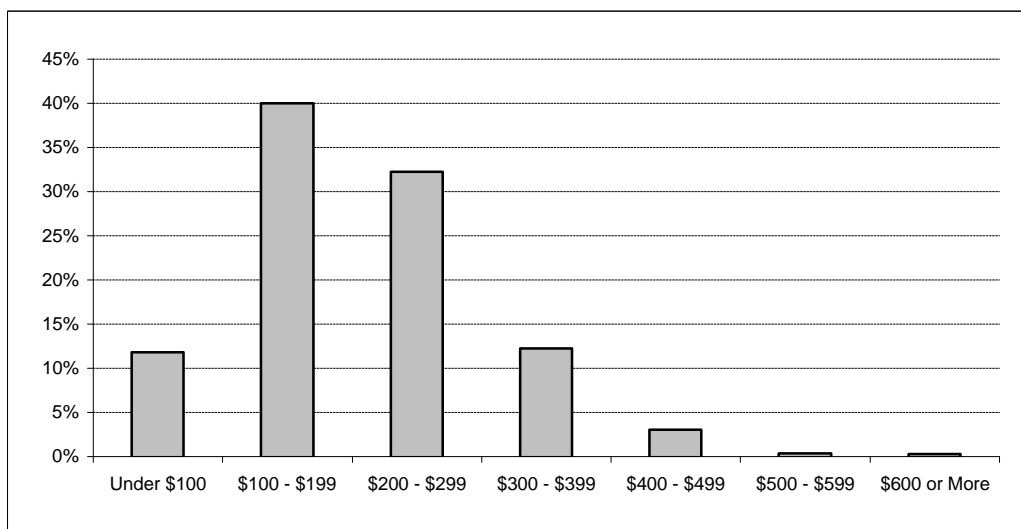
Temporary Assistance for Needy Families (TANF)  
 Characteristics Survey  
 Federal Fiscal Year 1998

Table 6

TANF Families Receiving Food Stamps

Food Stamp Amount	10/96 AFDC Characteristics Survey		FFY 98: 10/97-9/98 12-Month Average		Percent of Amount of Change	
	Cases	Percent	Cases	Percent		
TOTAL CASELOAD	<u>860,016</u>	<u>100.0</u>	<u>707,018</u>	<u>100.0</u>	-17.8	
NOT REC. FOOD STAMPS	66,706	7.8	92,527	13.1		
RECEIVING FOOD STAMPS	<u>793,310</u>	92.2	<u>614,491</u>	86.9	<u>100.0</u>	-5.3
Under \$100	77,668	9.8	72,705	11.8	2.0	
\$100 - \$199	366,958	46.3	245,728	40.0	-6.3	
\$200 - \$299	250,520	31.6	198,209	32.3	0.7	
\$300 - \$399	76,754	9.7	75,064	12.2	2.5	
\$400 - \$499	14,990	1.9	18,807	3.1	1.2	
\$500 - \$599	4,678	0.6	2,270	0.4	-0.2	
\$600 or More	1,741	0.2	1,708	0.3	0.1	
AVERAGE	\$200		\$205		\$5	

Amount of Food Stamps Received Each Month



Source: FFY 98 data.

*Tables 7 and 7A*

Families Receiving  
Subsidized Housing  
and  
Medi-Cal Benefits

- 3 Families in 10.2% of cases received a governmental rent or housing subsidy through the Housing & Urban Development (HUD) program, a local housing agency, or from Section 8 provisions.
- 3 Cases receiving subsidies increased by 2.6%.
- 3 Although it appears there was a sizeable increase in the number of cases not receiving subsidies, some of the large number of "unknown" cases in the October 1996 survey may have actually belonged in that category.
- 3 Although all TANF families are covered by Medi-Cal benefits, some family members may be excluded.

Temporary Assistance for Needy Families (TANF)  
 Characteristics Survey  
 Federal Fiscal Year 1998

Table 7

Families Receiving Subsidized Housing

Receives Subsidy	10/96 AFDC Characteristics Survey		FFY 98: 10/97-9/98 12-Month Average		Percent or Amount of Change
	Cases	Percent	Cases	Percent	
TOTAL CASELOAD	<u>860,016</u>	<u>100.0</u>	<b><u>707,018</u></b>	<b><u>100.0</u></b>	-17.8
Receives Housing Subsidy	65,036	7.6	<b>72,336</b>	<b>10.2</b>	2.6
No Subsidized Housing	594,545	69.1	<b>634,451</b>	<b>89.7</b>	20.6
Unknown if Receiving Subsidy	200,435	23.3	<b>231</b>	<b>0.0</b>	-23.3

Table 7A

Families Receiving Medi-Cal Benefits

Receives Medi-Cal	10/96 AFDC Characteristics Survey		FFY 98: 10/97-9/98 12-Month Average		Percent or Amount of Change
	Cases	Percent	Cases	Percent	
TOTAL CASELOAD	860,016	100.0	<b>707,018</b>	<b>100.0</b>	-17.8



*Table 8*

Families  
Receiving  
Cash Assistance

- 3 The average monthly aid payment decreased by \$66 since October 1996.
- 3 Since the average AU size has been close to three persons for several years, possible reasons for the grant decline include sanctions/penalties and increased earnings.
- 3 An increase of 9.4% occurred in the number of families receiving \$600 to \$699 per month.
- 3 There is a 14.7% decrease in the number of cases receiving \$700 or more per month.

Temporary Assistance for Needy Families (TANF)  
 Characteristics Survey  
 Federal Fiscal Year 1998

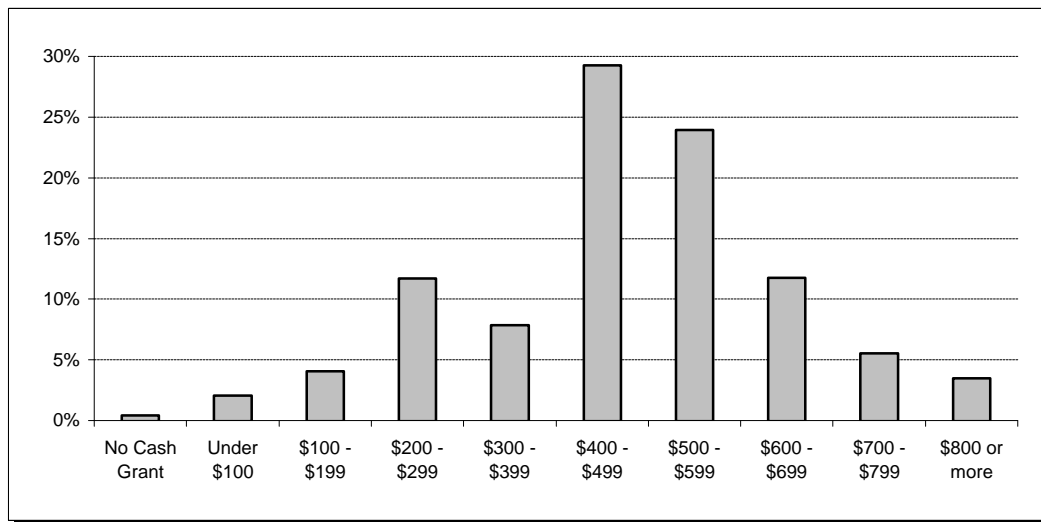
Table 8

Families Receiving Cash Assistance

Monthly Amount	10/96 AFDC Characteristics Survey		FFY 98: 10/97-9/98 12-Month Average		Percent or Amount of Change
	Cases	Percent	Cases	Percent	
<b>TOTAL CASELOAD</b>	<b><u>860,016</u></b>	<b><u>100.0</u></b>	<b><u>707,018</u></b>	<b><u>100.0</u></b>	-17.8
No Cash Grant *	0	0.0	3,034	0.4	0.4
Under \$100	8,161	0.9	14,447	2.0	1.1
\$100 - \$199	21,099	2.5	28,632	4.0	1.6
\$200 - \$299	76,233	8.9	82,581	11.7	2.8
\$300 - \$399	52,847	6.1	55,383	7.8	1.7
\$400 - \$499	252,894	29.4	206,782	29.2	-0.2
\$500 - \$599	224,704	26.1	169,222	23.9	-2.2
\$600 - \$699	20,075	2.3	83,106	11.8	9.4
\$700 - \$799	108,127	12.6	39,106	5.5	-7.0
\$800 or more	95,876	11.1	24,725	3.5	-7.7
<b>AVERAGE</b>	<b>\$545</b>		<b>\$479</b>		<b>-\$66</b>

\* The 10/96 survey was conducted using only cases that received a cash grant.

Amount of Cash Grant Received per Case Each Month



Source: FFY 98 data.

*Table 9*

Reasons  
for  
Grant Reduction

The monthly grant for which the family qualifies, may be reduced for any of the following reasons:

- 3 Increased Earnings (Earned/Unearned);
- 3 Household composition change;
- 3 Overpayment recoupment due to an intentional program violation, an inadvertent household error or an agency error; or
- 3 Sanctions, penalties or other state limitations.

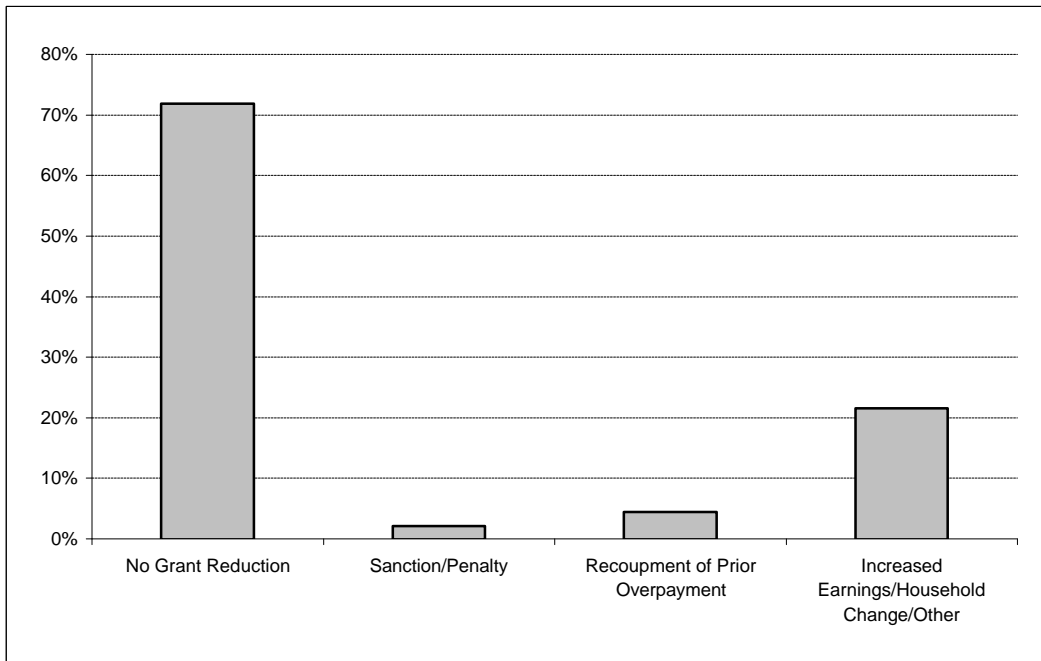
Temporary Assistance for Needy Families (TANF)  
 Characteristics Survey  
 Federal Fiscal Year 1998

Table 9

Reasons for Grant Reduction

Reason	FFY 98: 10/97-9/98 12-Month Average	
	Cases	Percent
<b>TOTAL CASELOAD</b>	<b><u>707,018</u></b>	<b><u>100.0</u></b>
No Grant Reduction	508,279	71.9
Sanction/Penalty	14,642	2.1
Recoupment of Prior Overpayment	31,647	4.5
Increased Earnings/Household Change/Other	152,450	21.6

Display of Grant Reduction Reasons



Source: FFY 98 data.

## Person Data

The prior section reported data on cases.  
The following displays characteristics of **persons**  
in the TANF program.  
Persons are further identified as **adults** and **children**.

**Any teen parent who is the head of household or a spouse  
is included as an adult in these tables.**

Age

*Tables 10 and 11*

Age  
of  
Recipients

- 3 The average age of aided adults is 34 years, an increase of 1.3 years since October 1996.
- 3 The number in the age group of 40 to 49 years increased 3.3% while the 20 to 29-year-old age group decreased 3.1%.
- 3 The average age of children has increased from 7.2 to 8.2 years since October 1996.
- 3 The number of children aged 5 years and younger has decreased 4.8% since October 1996.

Note: A teen parent head of household and a teen spouse are reflected in the adult tables.

Temporary Assistance for Needy Families (TANF)  
 Characteristics Survey  
 Federal Fiscal Year 1998

Table 10

Age of Adults in the Assistance Unit

Age of Adults	10/96 AFDC Characteristics Survey - Ad Hoc		FFY 98: 10/97-9/98 12-Month Average		Percent or Amount of Change
	Persons	Percent	Persons	Percent	
TOTAL PERSONS	<u>2,517,851</u>	<u>100.0</u>	<u>2,122,763</u>	<u>100.0</u>	-15.7
CHILDREN	1,740,188	69.1	1,495,327	70.4	
ADULTS	<u>777,663</u>	30.9	<u>627,436</u>	29.6	<u>100.0</u>
Under 20	35,192	4.5	24,705	3.9	-0.6
20 - 29	288,083	37.0	213,233	34.0	-3.1
30 - 39	281,124	36.1	224,105	35.7	-0.4
40 - 49	134,794	17.3	129,483	20.6	3.3
50 or More	38,469	4.9	35,910	5.7	0.8
AVERAGE AGE		32.7		34.0	1.3

Table 11

Age of Children in the Assistance Unit

Age in Years	10/96 AFDC Characteristics Survey - Ad Hoc		FFY 98: 10/97-9/98 12-Month Average		Percent or Amount of Change
	Persons	Percent	Persons	Percent	
TOTAL PERSONS	<u>2,517,851</u>	<u>100.0</u>	<u>2,122,763</u>	<u>100.0</u>	-15.7
ADULTS	777,663	30.9	627,436	29.6	
CHILDREN	<u>1,740,188</u>	69.1	<u>1,495,327</u>	70.4	<u>100.0</u>
Less than Two	211,357	12.1	159,933	10.7	-1.5
2 - 5	542,787	31.2	417,488	27.9	-3.3
6 - 11	598,235	34.4	546,482	36.5	2.2
12 - 15	277,087	15.9	255,288	17.1	1.1
16 - 19 *	110,722	6.4	116,093	7.8	1.4
Unknown/Unborn Child	0	0.0	43	0.0	N/A
AVERAGE AGE		7.2		8.2	1.0

\* The 10/96 data classifies persons through age 18 as "children" and the FFY 98 data, through age 19.



*Table 12*

Youngest Recipient Child  
by  
Age Group

- 3 In most families (26%), the youngest child is between the ages of 3 to 5 years.
- 3 Over 50% of the youngest children in a case are between the ages of 1 to 5 years.
- 3 In some cases, the age of the youngest child will determine if the parent is exempt from federal work requirements.

Temporary Assistance for Needy Families (TANF)  
 Characteristics Survey  
 Federal Fiscal Year 1998

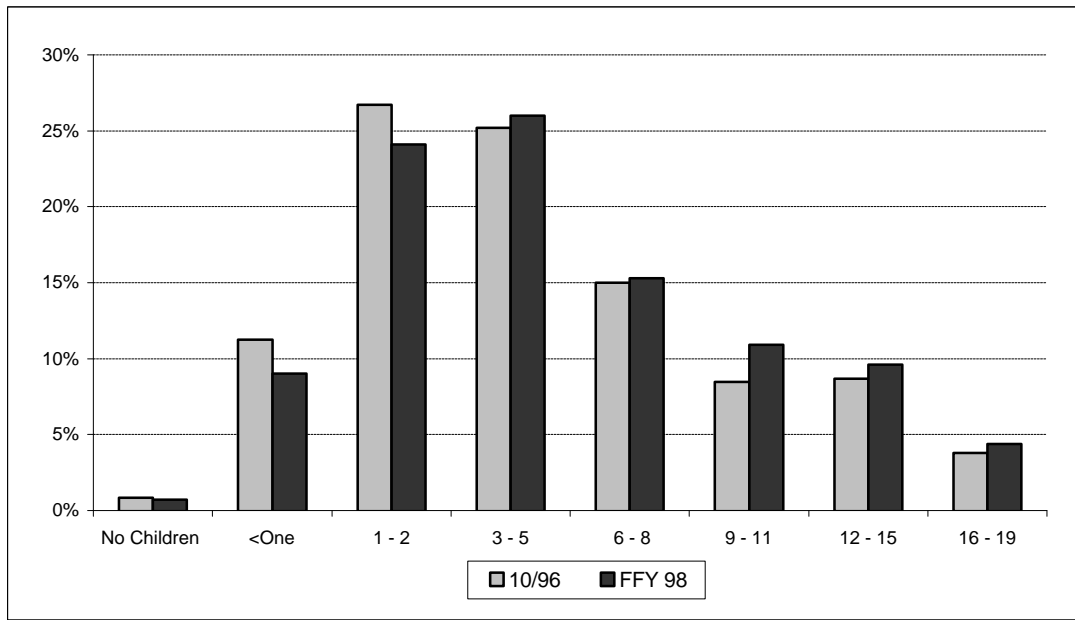
Table 12

Youngest Recipient Child by Age Group

Age of Youngest Child	10/96 AFDC Characteristics Survey - Ad Hoc		FFY 98: 10/97-9/98 12-Month Average		Percent or Amount of Change
	Cases	Percent	Cases	Percent	
<b>TOTAL CASELOAD</b>	<b><u>860,016</u></b>	<b><u>100.0</u></b>	<b><u>707,018</u></b>	<b><u>100.0</u></b>	-17.8
No Children in AU *	7,169	0.8	<b>5,185</b>	<b>0.7</b>	-0.1
Under One Year	96,687	11.2	<b>63,474</b>	<b>9.0</b>	-2.3
One to Two Years	229,731	26.7	<b>170,456</b>	<b>24.1</b>	-2.6
Three to Five Years	216,582	25.2	<b>183,775</b>	<b>26.0</b>	0.8
Six to Eight Years	129,012	15.0	<b>108,084</b>	<b>15.3</b>	0.3
Nine to Eleven Years	72,922	8.5	<b>76,860</b>	<b>10.9</b>	2.4
Twelve to Fifteen Years	75,106	8.7	<b>68,048</b>	<b>9.6</b>	0.9
Sixteen to Nineteen Yrs.	32,807	3.8	<b>31,136</b>	<b>4.4</b>	0.6

\* Can reflect a case where the child is aided under SSI/SSP or the Mother is pregnant with no other children.

Comparison of the Youngest Child in the AU



Race

*Tables 13 and 14*

Race  
of  
Recipients

- 3 Hispanics remain the largest group on aid, 34.1% of aided adults and 43.3% of aided children.
- 3 The only group to have an increase in its proportion of welfare recipients is Blacks, up 3.7% for adults and 4.4% for children since the October 1996 survey.
- 3 The Asian/Other category includes the following:  
Asian Indian, Cambodian, Chinese, Filipino,  
Guamanian, Japanese, Korean, Laotian, other  
Asian or Pacific Islander, Samoan and Vietnamese.

Temporary Assistance for Needy Families (TANF)  
 Characteristics Survey  
 Federal Fiscal Year 1998

Table 13

Race of Adults in the Assistance Unit

Race	10/96 AFDC Characteristics Survey - Ad Hoc		FFY 98: 10/97-9/98 12-Month Average		Percent of Amount of Change	
	Persons	Percent	Persons	Percent		
TOTAL PERSONS	<u>2,517,851</u>	<u>100.0</u>	<u>2,122,763</u>	<u>100.0</u>	-15.7	
CHILDREN	1,740,188	69.1	1,495,327	70.4		
ADULTS	<u>777,663</u>	30.9	<u>627,436</u>	29.6	<u>100.0</u>	-1.3
Hispanic	274,257	35.3	214,068	34.1		-1.1
White	257,238	33.1	200,149	31.9		-1.2
Black	130,540	16.8	128,556	20.5		3.7
Asian/Other	109,140	14.0	81,681	13.0		-1.0
Native American	6,488	0.8	2,982	0.5		-0.4

Table 14

Race of Children in the Assistance Unit

Race	10/96 AFDC Characteristics Survey - Ad Hoc		FFY 98: 10/97-9/98 12-Month Average		Percent of Amount of Change	
	Persons	Percent	Persons	Percent		
TOTAL PERSONS	<u>2,517,851</u>	<u>100.0</u>	<u>2,122,763</u>	<u>100.0</u>	-15.7	
ADULTS	777,663	30.9	627,436	29.6		
CHILDREN	<u>1,740,188</u>	69.1	<u>1,495,327</u>	70.4	<u>100.0</u>	1.3
Hispanic	754,445	43.4	647,053	43.3		-0.1
White	465,117	26.7	352,583	23.6		-3.1
Black	279,989	16.1	306,595	20.5		4.4
Asian/Other	228,196	13.1	182,880	12.2		-0.9
Native American	12,441	0.7	6,216	0.4		-0.3

## Marital Status

*Table 15*

Marital Status  
of  
Adults in the Assistance Unit

- 3 As in past surveys, the largest marital status category is "Never Married."
- 3 The increase of 10.9% for "Never Married" may relate to the decrease of 8.6% in the "Unknown" category.
- 3 The "Married" category has decreased by 2.9%.

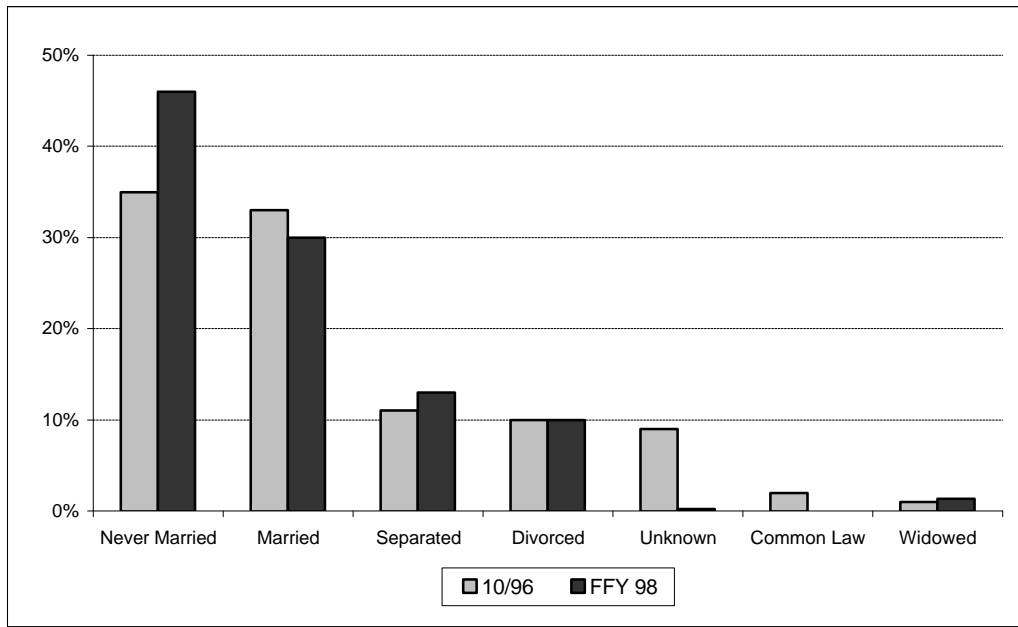
Temporary Assistance for Needy Families (TANF)  
 Characteristics Survey  
 Federal Fiscal Year 1998

Table 15

Marital Status of Adults in the Assistance Unit

Marital Status	10/96 AFDC Characteristics Survey - Ad Hoc		FFY 98: 10/97-9/98 12-Month Average			Percent of Amount of Change
	Persons	Percent	Persons	Percent		
TOTAL PERSONS	<u>2,517,851</u>	<u>100.0</u>	<u>2,122,763</u>	<u>100.0</u>		-15.7
CHILDREN	1,740,188	69.1	1,495,327	70.4		
ADULTS	<u>777,663</u>	30.9	<u>627,436</u>	29.6	<u>100.0</u>	-1.3
Never Married	274,284	35.3	289,842	46.2		10.9
Married	254,285	32.7	186,709	29.8		-2.9
Separated	85,273	11.0	80,769	12.9		1.9
Divorced	75,195	9.7	60,664	9.7		0.0
Unknown	68,325	8.8	1,273	0.2		-8.6
Common Law	15,339	2.0	N/A	N/A		N/A
Widowed	4,962	0.6	8,179	1.3		0.7

Marital Status Comparison





Relationship  
to the  
TANF Head of Household

*Tables 16 and 17*

Recipients by Relationship  
to the  
TANF Head of Household

- 3 By definition, the head of household must be an adult, aided or not. The exception would be an emancipated teen parent.
- 3 84.2% of adults are the head of the household.
- 3 An example of an aided adult who is unrelated to the head of household: unmarried parents with a child in common where the mother is the head of household and the father is unrelated to the head of household.
- 3 Most children in the case are the daughters or son of the head of household.

Temporary Assistance for Needy Families (TANF)  
 Characteristics Survey  
 Federal Fiscal Year 1998

Table 16

Adult Recipients by Relationship to the TANF Head of Household

Relationship	FFY 98: 10/97-9/98 12-Month Average	
	Persons	Percent
TOTAL PERSONS	<u>2,122,763</u>	<u>100.0</u>
CHILDREN	1,495,327	70.4
ADULTS	<u>627,436</u>	29.6 <span style="float: right;"><u>100.0</u></span>
Head of Household	528,148	84.2
Spouse	82,433	13.1
Unrelated Adult	10,246	1.6
Parent	3,222	0.5
Other Relative	1,700	0.3
Unknown	1,687	0.3

Table 17

Child Recipients by Relationship to the TANF Head of Household

Relationship	FFY 98: 10/97-9/98 12-Month Average	
	Persons	Percent
TOTAL PERSONS	<u>2,122,763</u>	<u>100.0</u>
ADULTS	627,436	29.6
CHILDREN	<u>1,495,327</u>	70.4 <span style="float: right;"><u>100.0</u></span>
Daughter/Son	1,423,921	95.2
Stepdaughter/Stepson	999	0.1
Grandchild/Great Grandchild	54,484	3.6
Other Related	14,507	1.0
Foster Child	115	0.0
Unrelated Child	1,140	0.1
Unknown	161	0.0

Teen Parent

*Tables 18 and 19*

Recipients  
with  
Teen Parent Status

- 3 Based on TANF reporting requirements, a teen parent is a member of the AU who is aged 19 or younger and is the parent of a child in the AU.
- 3 Any teen parent who is the head of the household or a spouse, is identified as an adult in this survey.

Temporary Assistance for Needy Families (TANF)  
 Characteristics Survey  
 Federal Fiscal Year 1998

Table 18

Teen Parent Recipients with Adult Status \*

Teen Parent Status	FFY 98: 10/97-9/98 12-Month Average	
	Persons	Percent
TOTAL PERSONS	<u>2,122,763</u>	<u>100.0</u>
CHILDREN	1,495,327	70.4
ADULTS	<u>627,436</u>	29.6 <u>100.0</u>
Teen Parent Under Age 18	1,184	0.2
Teen Parent Age 18	8,418	1.3
Teen Parent 19 years old	11,509	1.8
Not a Teen Parent	606,038	96.6
Unknown	287	0.0

\* Regardless of age, a teen parent with adult status is included above because they are a head of household or a spouse.

Table 19

Teen Parent Recipients with Child Status \*

Teen Parent Status	FFY 98: 10/97-9/98 12-Month Average	
	Persons	Percent
TOTAL PERSONS	<u>2,122,763</u>	<u>100.0</u>
ADULTS	627,436	29.6
CHILDREN	<u>1,495,327</u>	70.4 <u>99.5</u>
Teen Parent Under Age 18	7,884	0.5
Teen Parent Age 18	454	0.0
Not a Teen Parent	1,486,861	99.4
Unknown	127	0.0

\* Regardless of age, a teen parent with child status is included above and is in the AU with his/her parent.

# Education Level

*Tables 20 and 21*

Recipients  
by  
Education Level

- 3 This data reflects the highest grade completed by individual recipients. If still attending school, the highest grade completed was the grade completed in the prior term.
- 3 50.5% of adult recipients have at least a twelfth grade education.
- 3 The category "None" for adults indicates no formal education. For children it means the child is too young to have started formal education.



Temporary Assistance for Needy Families (TANF)  
 Characteristics Survey  
 Federal Fiscal Year 1998

Table 20

Adult Recipients by Education Level

Years of Education	FFY 98: 10/97-9/98 12-Month Average		
	Persons	Percent	
TOTAL PERSONS	<u>2,122,763</u>	<u>100.0</u>	
CHILDREN	1,495,327	70.4	
ADULTS	<u>627,436</u>	29.6	<u>100.0</u>
One to Six	62,886		10.0
Seven to Nine	65,846		10.5
Ten to Eleven	153,621		24.5
Twelve and Over	316,829		50.5
None	20,922		3.3
Unknown	7,332		1.2

Table 21

Child Recipients by Education Level

Years of Education	FFY 98: 10/97-9/98 12-Month Average		
	Persons	Percent	
TOTAL PERSONS	<u>2,122,763</u>	<u>100.0</u>	
ADULTS	627,436	29.6	
CHILDREN	<u>1,495,327</u>	70.4	<u>100.0</u>
One to Six	534,285		35.7
Seven to Nine	197,539		13.2
Ten to Eleven	93,291		6.2
Twelve and Over	3,494		0.2
None	661,754		44.3
Unknown	4,964		0.3

# Citizenship Status

*Tables 22 and 23*

Recipients  
by  
Citizenship Status

- 3 U.S. citizens include those born in the U.S., foreign born of citizen parents and naturalized citizens.
- 3 Certain categories of aliens are eligible for aid. These include refugees, lawfully admitted permanent residents, asylees, etc.
- 3 The number of adult citizen recipients has increased 3.3% since October 1996.
- 3 Adult noncitizens plus children noncitizens equal 249,842 persons, or 11.8% of total recipients.
- 3 Since the passage of PRWORA, new restrictions have been placed on some alien groups.

Temporary Assistance for Needy Families (TANF)  
 Characteristics Survey  
 Federal Fiscal Year 1998

Table 22

Adult Recipients by Citizenship Status

Citizenship Status	10/96 AFDC Characteristics Survey - Ad Hoc		FFY 98: 10/97-9/98 12-Month Average		Percent or Amount of Change	
	Persons	Percent	Persons	Percent		
TOTAL PERSONS	<u>2,517,851</u>	<u>100.0</u>	<u>2,122,763</u>	<u>100.0</u>	-15.7	
CHILDREN	1,740,188	69.1	1,495,327	70.4		
ADULTS	<u>777,663</u>	30.9	<u>627,436</u>	29.6	<u>100.0</u>	-1.3
U.S. Citizen	546,174	70.2	461,615	73.6	3.3	
Noncitizen	231,489	29.8	164,998	26.3	-3.5	
Unknown	0	0.0	823	0.1	0.1	

Table 23

Child Recipients by Citizenship Status

Citizenship Status	10/96 AFDC Characteristics Survey - Ad Hoc		FFY 98: 10/97-9/98 12-Month Average		Percent Change	
	Persons	Percent	Persons	Percent		
TOTAL PERSONS	<u>2,517,851</u>	<u>100.0</u>	<u>2,122,763</u>	<u>100.0</u>	-15.7	
ADULTS	777,663	30.9	627,436	29.6		
CHILDREN	<u>1,740,188</u>	69.1	<u>1,495,327</u>	70.4	<u>100.0</u>	1.3
U.S. Citizen	1,628,322	93.6	1,410,254	94.3	0.7	
Noncitizen	111,866	6.4	84,844	5.7	-0.8	
Unknown	0	0.0	229	0.0	N/A	

# Disability Benefits

*Tables 24 and 25*

Recipients  
Receiving  
Federal Disability Benefits

- 3 Benefits include OASDI/ RSDI, Title XIV-APTD, Title XVI-AABD, Title XVI-SSI and other benefits based on federal disability status.
- 3 Some persons receiving federal disability benefits are exempt from work participation activities.
- 3 Persons aided under the SSI/SSP program are not reflected in this table because their benefits make them ineligible to be included in the TANF AU.

OASDI:	Old Age Survivor's and Disability Insurance Benefits
RSDI:	Retirement and Survivors Disability Insurance
APTD:	Aid to Permanently and Totally Disabled
AABD:	Adults Aged, Blind and Disabled
SSI:	Supplemental Security Income
SSI/SSP:	Supplemental Security Income/State Supplemental Payment

Temporary Assistance for Needy Families (TANF)  
 Characteristics Survey  
 Federal Fiscal Year 1998

Table 24

Adult Recipients Receiving Federal Disability Benefits

Benefits Received	FFY 98: 10/97-9/98 12-Month Average	
	Persons	Percent
TOTAL PERSONS	<u>2,122,763</u>	<u>100.0</u>
CHILDREN	1,495,327	70.4
ADULTS	<u>627,436</u>	29.6
Receives Disability Benefits	3,542	0.6
Does Not Receive Benefits	623,894	99.4

Table 25

Child Recipients Receiving Federal Disability Benefits

Benefits Received	FFY 98: 10/97-9/98 12-Month Average	
	Persons	Percent
TOTAL PERSONS	<u>2,122,763</u>	<u>100.0</u>
ADULTS	627,436	29.6
CHILDREN	<u>1,495,327</u>	70.4
Receives Disability Benefits	17,082	1.1
Does Not Receive Benefits	1,478,245	98.9

# Employment



*Table 26*

Adult Recipients  
by  
Employment Status

- 3 The percentage of cases with earned income has increased 17.6% since October 1996. (16.9% was reported for October 1996 compared to 34.5% in FFY 98. See trend chart.)
  - 3 "Unemployed, Looking for Work" refers to persons who are actively seeking work and considered in the labor force.
  - 3 "Not Employed, Not Looking for Work" refers to persons who are not seeking work and, therefore, not considered in the labor force.
  - 3 Because some newly employed persons may not yet have received their earnings in the study month, the number of persons with earned income (227,483 on Table 28) is less than the number employed (239,990 on Table 26).
- 
-

Temporary Assistance for Needy Families (TANF)  
 Characteristics Survey  
 Federal Fiscal Year 1998

Table 26

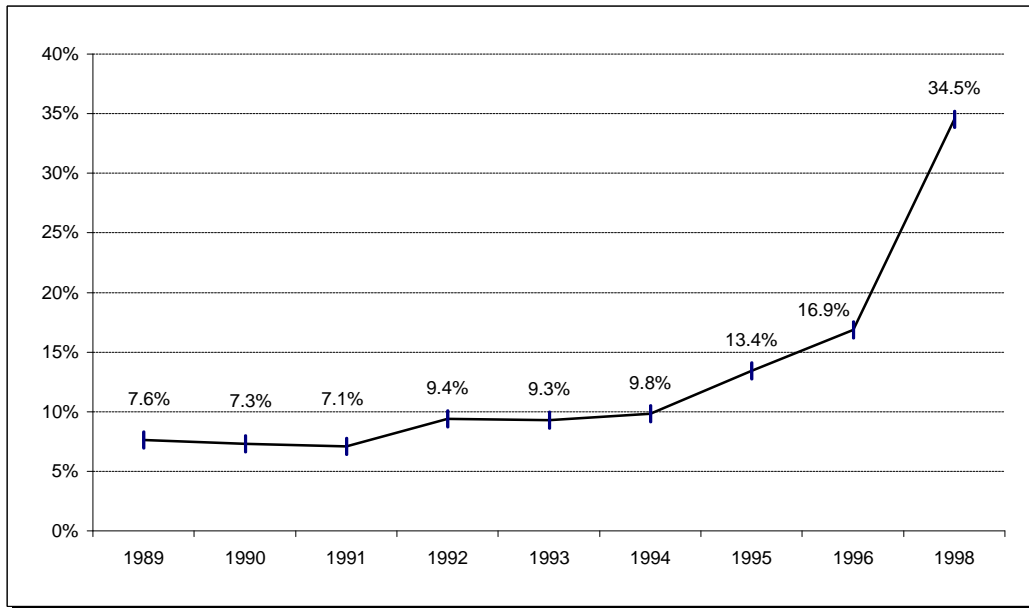
Adult Recipients by Employment Status

Employment Status	FFY 98: 10/97-9/98 12-Month Average	
	Persons	Percent
TOTAL PERSONS	<u>2,122,763</u>	<u>100.0</u>
CHILDREN	1,495,327	70.4
ADULT RECIPIENTS	<u>627,436</u>	29.6
Employed	239,990	<u>38.2</u>
Unemployed, Looking for Work	154,985	<u>24.7</u>
Not Employed, Not Looking for Work	218,521	<u>34.8</u>
Unknown	13,940	2.2

Note: Earned income data for adults was supplemented by data from the EDD wage file.

The chart above identifies employment status of **persons**; the chart below identifies **cases** with earned income.

Percent of **Cases** with Earned Income



Source of trend data: 1989 - 1996, AFDC Characteristics Surveys; 1997, data unavailable; and 1998, current survey.

*Table 27*

Adult Recipients  
by  
Work Participation Status

- 3 Recipients who were exempt from GAIN because he/she maintained the GAIN exemption status until transitioned into the Welfare to Work program, are included in the "Exempt-Not Required to Participate" category in these tables.

The following are two examples of recipients who may not be required to participate in work activities and/or their non-participation does not jeopardize the work participation rate calculation:

- 3 A single parent or guardian caring for a child under the age of 12 months; or
- 3 A person sanctioned for fewer than three months.

Temporary Assistance for Needy Families (TANF)  
 Characteristics Survey  
 Federal Fiscal Year 1998

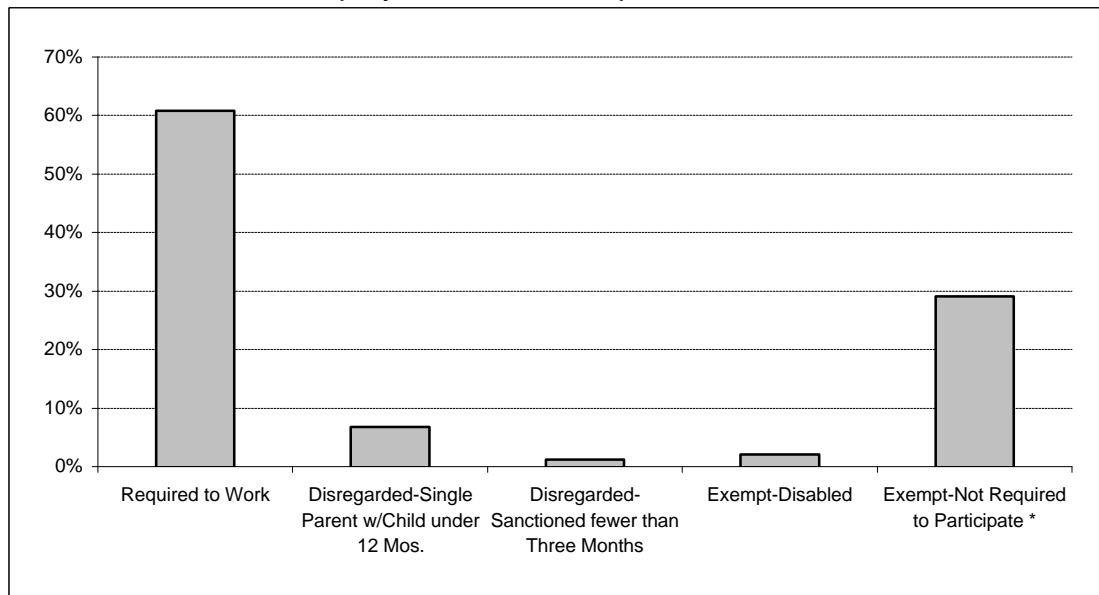
Table 27

Adult Recipients by Work Participation Status

Work Participation Status	FFY 98: 10/97-9/98 12-Month Average		
	Persons	Percent	
TOTAL PERSONS	<b><u>2,122,763</u></b>	<b><u>100.0</u></b>	
CHILDREN	<b>1,495,327</b>	<b>70.4</b>	
ADULTS	<b><u>627,436</u></b>	<b>29.6</b>	<b><u>100.0</u></b>
Required to Work	<b>381,619</b>	<b>60.8</b>	
Disregarded-Single Parent w/Child under 12 Mos.	<b>42,785</b>	<b>6.8</b>	
Disregarded-Sanctioned fewer than Three Months	<b>7,261</b>	<b>1.2</b>	
Exempt-Disabled	<b>12,982</b>	<b>2.1</b>	
Exempt-Not Required to Participate *	<b>182,789</b>	<b>29.1</b>	

\* GAIN and Welfare to Work exemption criteria were used to determine a person's exemption status.

Display of Work Participation Status



Source: FFY 98 data.

Income

*Tables 28 and 29*

Recipients  
by  
Type of Income

- 3 As seen on the trend chart, the earned income per case has been steadily increasing and, at the same time, the grant amount is decreasing (Chart, page 4).

Examples of earned income include:

- 3 Wages and salaries, self-employment income and earnings from the Job Training Partnership Act (JTPA) program, on-the-job-training, public service, etc.

Examples of unearned income include:

- 3 Retirement and Survivors Disability Insurance (RSDI), veterans benefits, unemployment compensation, child support contributions, Worker's Compensation, other government benefits such as Black Lung and Railroad Retirement, and other unearned benefits such as non government disability, pensions, alimony and gifts of cash
- 
-

Temporary Assistance for Needy Families (TANF)  
 Characteristics Survey  
 Federal Fiscal Year 1998

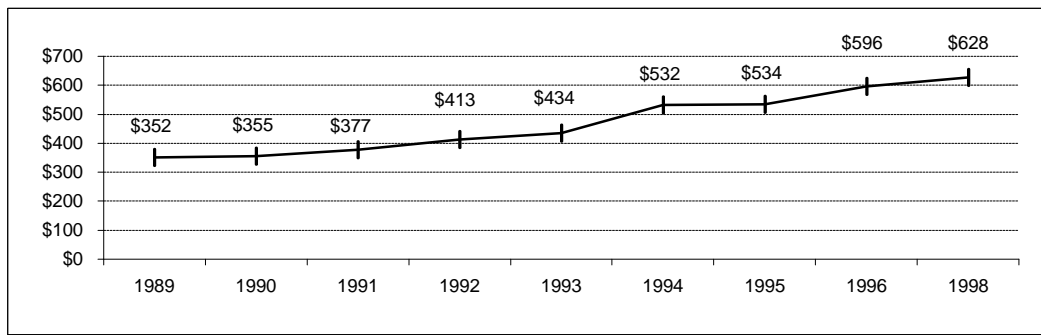
**Table 28**  
**Adult Recipients by Type of Income**

Income Type	FFY 98: 10/97-9/98 12-Month Average		
	Adults	Percent	Monthly Avg.
TOTAL ADULTS	<b>627,436</b>	<b>100.0</b>	
NO INCOME	426,429	68.0	
ALL INCOME *	<b>244,534</b>	<b>39.0</b>	<b>\$588</b>
Earned Income	227,483	93.0	<b>\$599</b>
Unearned Income	32,622	13.3	<b>\$232</b>

\* Because a person could have both earned and unearned income, the sum of the two exceeds the total.  
 Note: Earned income data for adults was supplemented by data from the EDD wage file.

The chart above identifies **adults** with income; the chart below identifies earned income per **case**.

**Average Monthly Amount of Gross Earned Income per Case**



Source of trend data: 1989 - 1996, AFDC Characteristics Surveys; 1997, data unavailable; and 1998, current survey.

**Table 29**  
**Child Recipients with Unearned Income**

Unearned Income	FFY 98: 10/97-9/98 12-Month Average		
	Persons	Percent	Monthly Avg.
TOTAL PERSONS	<b>2,122,763</b>	<b>100.0</b>	
ADULTS	627,436	29.6	
CHILDREN	<b>1,495,327</b>	<b>70.4</b>	<b>100.0</b>
Unearned Income	19,561	1.3	<b>\$152</b>
No Unearned Income	1,475,765	98.7	<b>N/A</b>



State of California

Health and Human Services Agency

Department of Social Services