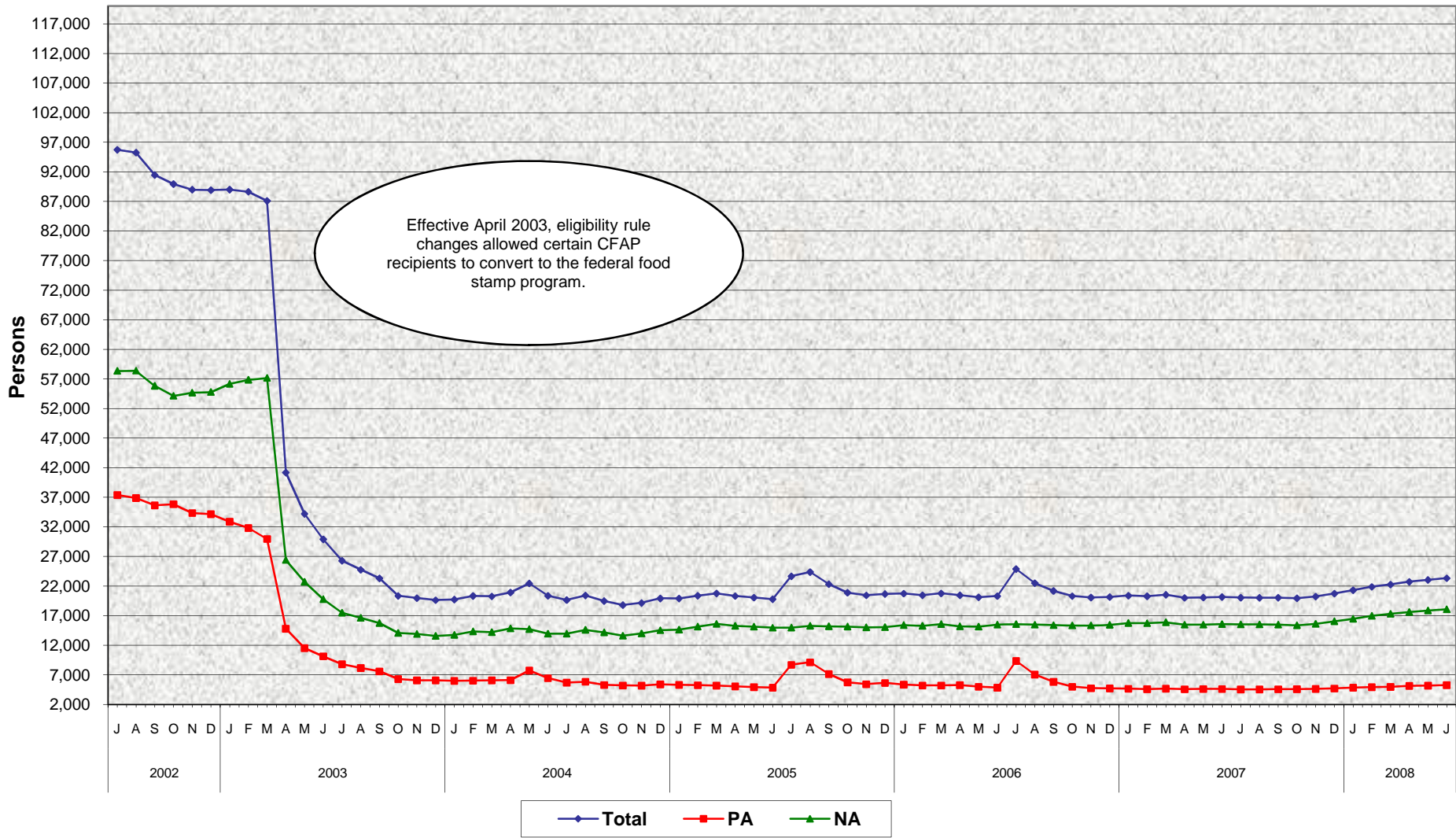


California Food Assistance Program (CFAP) Total, Public Assistance (PA), and Nonassistance (NA) Persons July 2002 - June 2008^{a/}



a/ Used prior month data for: Solano (5/03).

**California Food Assistance Program (CFAP)
Total, Public Assistance (PA), and Nonassistance (NA) Persons
July 2002 - June 2008^{a/}**

MONTHLY PERCENT CHANGE

		Jul	% Chg	Aug	% Chg	Sep	% Chg	Oct	% Chg	Nov	% Chg	Dec	% Chg	Jan	% Chg	Feb	% Chg	Mar	% Chg	Apr	% Chg	May	% Chg	Jun	% Chg
02/03	Total	95,727	31.2%	95,240	-0.5%	91,450	-4.0%	89,931	-1.7%	88,981	-1.1%	88,904	-0.1%	89,005	0.1%	88,633	-0.4%	87,089	-1.7%	41,175	-52.7%	34,200	-16.9%	29,900	-12.6%
	PA	37,372	3.3%	36,859	-1.4%	35,623	-3.4%	35,804	0.5%	34,314	-4.2%	34,125	-0.6%	32,854	-3.7%	31,796	-3.2%	29,934	-5.9%	14,789	-50.6%	11,501	-22.2%	10,116	-12.0%
	NA	58,355	58.6%	58,381	0.0%	55,827	-4.4%	54,127	-3.0%	54,667	1.0%	54,779	0.2%	56,151	2.5%	56,837	1.2%	57,155	0.6%	26,386	-53.8%	22,699	-14.0%	19,784	-12.8%
03/04	Total	26,278	-12.1%	24,761	-5.8%	23,311	-5.9%	20,336	-12.8%	19,960	-1.8%	19,614	-1.7%	19,720	0.5%	20,332	3.1%	20,258	-0.4%	20,914	3.2%	22,441	7.3%	20,348	-9.3%
	PA	8,796	-13.0%	8,152	-7.3%	7,570	-7.1%	6,270	-17.2%	6,071	-3.2%	6,057	-0.2%	5,984	-1.2%	6,004	0.3%	6,074	1.2%	6,089	0.2%	7,726	26.9%	6,420	-16.9%
	NA	17,482	-11.6%	16,609	-5.0%	15,741	-5.2%	14,066	-10.6%	13,889	-1.3%	13,557	-2.4%	13,736	1.3%	14,328	4.3%	14,184	-1.0%	14,825	4.5%	14,715	-0.7%	13,928	-5.3%
04/05	Total	19,634	-3.5%	20,416	4.0%	19,458	-4.7%	18,779	-3.5%	19,141	1.9%	19,908	4.0%	19,905	0.0%	20,374	2.4%	20,758	1.9%	20,303	-2.2%	20,048	-1.3%	19,778	-1.3%
	PA	5,690	-11.4%	5,821	2.3%	5,286	-9.2%	5,189	-1.8%	5,169	-0.4%	5,389	4.3%	5,299	-1.7%	5,241	-1.1%	5,162	-1.5%	5,047	-2.2%	4,922	-2.5%	4,835	-1.8%
	NA	13,944	0.1%	14,595	4.7%	14,172	-2.9%	13,590	-4.1%	13,972	2.8%	14,519	3.9%	14,606	0.6%	15,133	3.6%	15,596	3.1%	15,256	-2.2%	15,126	-0.9%	14,943	-1.2%
05/06	Total	23,654	19.6%	24,371	3.0%	22,315	-8.4%	20,876	-6.4%	20,422	-2.2%	20,651	1.1%	20,729	0.4%	20,445	-1.4%	20,759	1.5%	20,439	-1.5%	20,106	-1.6%	20,304	1.0%
	PA	8,689	79.7%	9,102	4.8%	7,129	-21.7%	5,734	-19.6%	5,403	-5.8%	5,619	4.0%	5,339	-5.0%	5,195	-2.7%	5,196	0.0%	5,260	1.2%	4,984	-5.2%	4,839	-2.9%
	NA	14,965	0.1%	15,269	2.0%	15,186	-0.5%	15,142	-0.3%	15,019	-0.8%	15,032	0.1%	15,390	2.4%	15,250	-0.9%	15,563	2.1%	15,179	-2.5%	15,122	-0.4%	15,465	2.3%
06/07	Total	24,886	22.6%	22,497	-9.6%	21,174	-5.9%	20,297	-4.1%	20,066	-1.1%	20,138	0.4%	20,378	1.2%	20,280	-0.5%	20,524	1.2%	20,004	-2.5%	20,060	0.3%	20,150	0.4%
	PA	9,333	92.9%	7,044	-24.5%	5,806	-17.6%	4,974	-14.3%	4,733	-4.8%	4,694	-0.8%	4,648	-1.0%	4,573	-1.6%	4,653	1.7%	4,551	-2.2%	4,605	1.2%	4,599	-0.1%
	NA	15,553	0.6%	15,453	-0.6%	15,368	-0.6%	15,323	-0.3%	15,333	0.1%	15,444	0.7%	15,730	1.9%	15,707	-0.1%	15,871	1.0%	15,453	-2.6%	15,455	0.0%	15,551	0.6%
07/08	Total	20,038	-0.6%	20,018	-0.1%	20,034	0.1%	19,937	-0.5%	20,222	1.4%	20,724	2.5%	21,296	2.8%	21,871	2.7%	22,256	1.8%	22,718	2.1%	23,034	1.4%	23,319	1.2%
	PA	4,527	-1.6%	4,524	-0.1%	4,557	0.7%	4,573	0.4%	4,629	1.2%	4,680	1.1%	4,841	3.4%	4,914	1.5%	4,966	1.1%	5,128	3.3%	5,167	0.8%	5,264	1.9%
	NA	15,511	-0.3%	15,494	-0.1%	15,477	-0.1%	15,364	-0.7%	15,593	1.5%	16,044	2.9%	16,455	2.6%	16,957	3.1%	17,290	2.0%	17,590	1.7%	17,867	1.6%	18,055	1.1%

TRENDS

- **CFAP persons increased 1.2% between May 2008 and June 2008.**
1.9% increase in PA persons
1.1% increase in NA persons
- **CFAP persons increased 15.7% between June 2007 and June 2008.**
14.5% increase in PA persons
16.1% increase in NA persons
- **Effective April 2003, eligibility rule changes allowed certain CFAP recipients to convert to the federal food stamp program.**

a/ Used prior month data for: Solano (5/03).