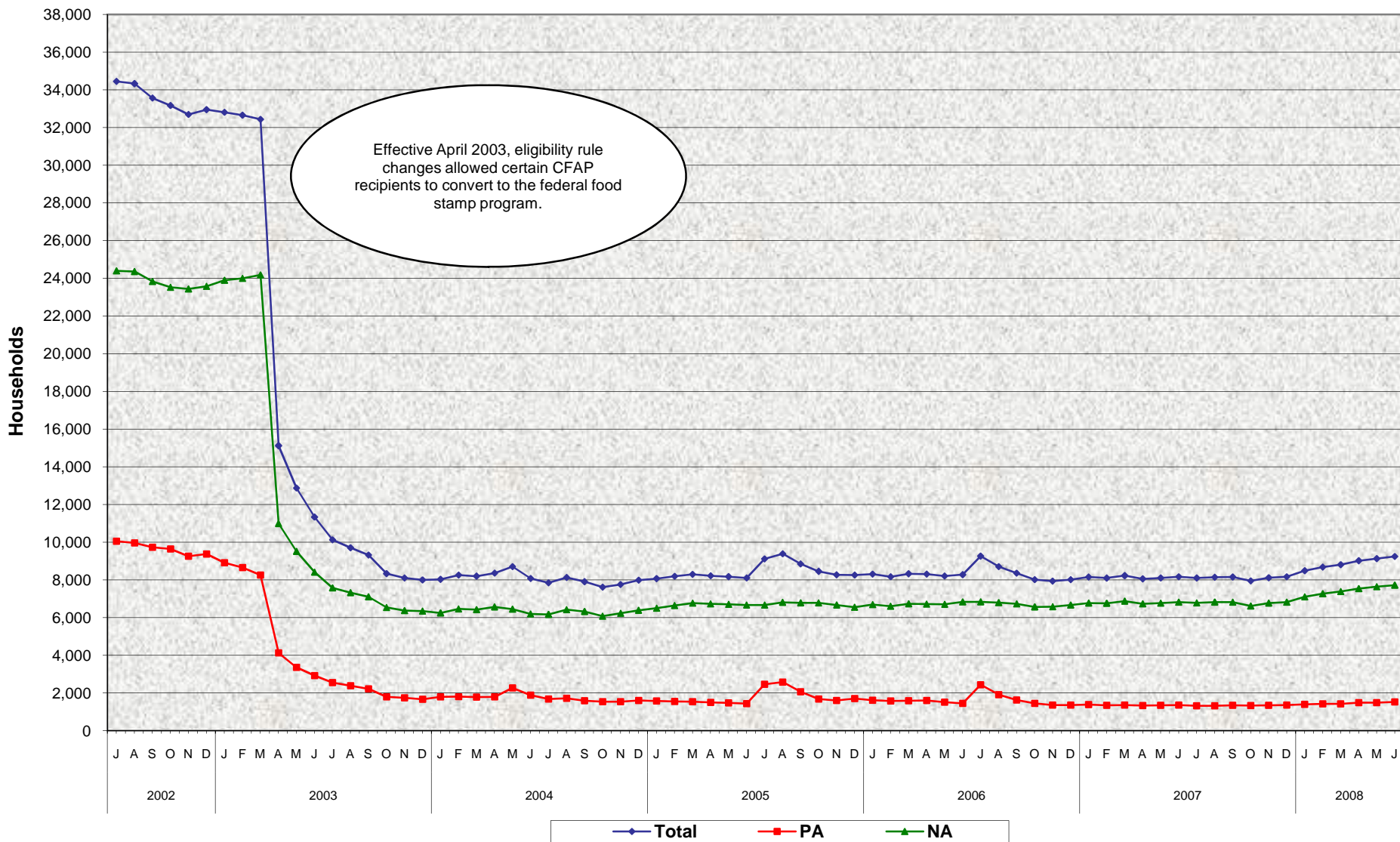


### California Food Assistance Program (CFAP) Total, Public Assistance (PA), and Nonassistance (NA) Households July 2002 - June 2008<sup>a/</sup>



a/ Used prior month data for: Solano (5/03).

**California Food Assistance Program (CFAP)  
Total, Public Assistance (PA), and Nonassistance (NA) Households  
July 2002 - June 2008<sup>a/</sup>**

**MONTHLY PERCENT CHANGE**

		Jul	% Chg	Aug	% Chg	Sep	% Chg	Oct	% Chg	Nov	% Chg	Dec	% Chg	Jan	% Chg	Feb	% Chg	Mar	% Chg	Apr	% Chg	May	% Chg	Jun	% Chg
02/03	Total	34,452	36.2%	34,331	-0.4%	33,567	-2.2%	33,167	-1.2%	32,696	-1.4%	32,948	0.8%	32,811	-0.4%	32,657	-0.5%	32,438	-0.7%	15,123	-53.4%	12,871	-14.9%	11,332	-12.0%
	PA	10,051	6.2%	9,967	-0.8%	9,733	-2.3%	9,640	-1.0%	9,261	-3.9%	9,373	1.2%	8,912	-4.9%	8,658	-2.9%	8,254	-4.7%	4,133	-49.9%	3,365	-18.6%	2,924	-13.1%
	NA	24,400	54.1%	24,364	-0.1%	23,835	-2.2%	23,527	-1.3%	23,435	-0.4%	23,575	0.6%	23,899	1.4%	24,000	0.4%	24,184	0.8%	10,991	-54.6%	9,506	-13.5%	8,408	-11.5%
03/04	Total	10,125	-10.7%	9,709	-4.1%	9,317	-4.0%	8,330	-10.6%	8,104	-2.7%	8,004	-1.2%	8,032	0.4%	8,254	2.8%	8,200	-0.7%	8,362	2.0%	8,706	4.1%	8,080	-7.2%
	PA	2,551	-12.7%	2,388	-6.4%	2,223	-6.9%	1,800	-19.0%	1,738	-3.5%	1,665	-4.2%	1,789	7.4%	1,801	0.7%	1,786	-0.8%	1,796	0.5%	2,263	26.0%	1,890	-16.5%
	NA	7,573	-9.9%	7,321	-3.3%	7,095	-3.1%	6,530	-8.0%	6,366	-2.5%	6,338	-0.4%	6,243	-1.5%	6,454	3.4%	6,413	-0.6%	6,566	2.4%	6,443	-1.9%	6,190	-3.9%
04/05	Total	7,846	-2.9%	8,127	3.6%	7,906	-2.7%	7,617	-3.7%	7,760	1.9%	7,984	2.9%	8,071	1.1%	8,189	1.5%	8,298	1.3%	8,223	-0.9%	8,173	-0.6%	8,101	-0.9%
	PA	1,680	-11.1%	1,713	2.0%	1,583	-7.6%	1,543	-2.5%	1,532	-0.7%	1,599	4.3%	1,574	-1.5%	1,556	-1.2%	1,533	-1.5%	1,495	-2.4%	1,473	-1.5%	1,437	-2.4%
	NA	6,167	-0.4%	6,414	4.0%	6,323	-1.4%	6,073	-3.9%	6,227	2.5%	6,385	2.5%	6,497	1.7%	6,633	2.1%	6,766	2.0%	6,728	-0.6%	6,700	-0.4%	6,664	-0.5%
05/06	Total	9,116	12.5%	9,384	2.9%	8,848	-5.7%	8,456	-4.4%	8,272	-2.2%	8,255	-0.2%	8,308	0.6%	8,172	-1.6%	8,327	1.9%	8,309	-0.2%	8,211	-1.2%	8,278	0.8%
	PA	2,459	71.1%	2,575	4.7%	2,067	-19.7%	1,681	-18.7%	1,605	-4.5%	1,710	6.5%	1,620	-5.3%	1,574	-2.8%	1,594	1.3%	1,598	0.3%	1,508	-5.6%	1,448	-4.0%
	NA	6,657	-0.1%	6,809	2.3%	6,781	-0.4%	6,775	-0.1%	6,667	-1.6%	6,545	-1.8%	6,688	2.2%	6,598	-1.3%	6,733	2.0%	6,711	-0.3%	6,703	-0.1%	6,830	1.9%
06/07	Total	9,263	11.9%	8,705	-6.0%	8,356	-4.0%	8,015	-4.1%	7,939	-0.9%	8,017	1.0%	8,158	1.8%	8,098	-0.7%	8,227	1.6%	8,058	-2.1%	8,105	0.6%	8,167	0.8%
	PA	2,430	67.8%	1,913	-21.3%	1,633	-14.6%	1,450	-11.2%	1,364	-5.9%	1,358	-0.4%	1,387	2.1%	1,343	-3.2%	1,355	0.9%	1,335	-1.5%	1,344	0.7%	1,355	0.8%
	NA	6,833	0.0%	6,792	-0.6%	6,723	-1.0%	6,565	-2.4%	6,575	0.2%	6,659	1.3%	6,771	1.7%	6,755	-0.2%	6,872	1.7%	6,723	-2.2%	6,761	0.6%	6,812	0.8%
07/08	Total	8,099	-0.8%	8,142	0.5%	8,158	0.2%	7,946	-2.6%	8,112	2.1%	8,170	0.7%	8,485	3.9%	8,678	2.3%	8,805	1.5%	9,019	2.4%	9,126	1.2%	9,244	1.3%
	PA	1,324	-2.3%	1,320	-0.3%	1,342	1.7%	1,338	-0.3%	1,341	0.2%	1,354	1.0%	1,392	2.8%	1,417	1.8%	1,428	0.8%	1,483	3.9%	1,493	0.7%	1,523	2.0%
	NA	6,775	-0.5%	6,822	0.7%	6,816	-0.1%	6,608	-3.1%	6,771	2.5%	6,816	0.7%	7,093	4.1%	7,261	2.4%	7,377	1.6%	7,536	2.2%	7,633	1.3%	7,721	1.2%

**NOTE:** The number of CFAP households is the total of CFAP-only households plus the CFAP share of combined households (households which include federally eligible and California Food Assistance Program [CFAP] eligible persons). The CFAP share of combined households is calculated using a proration based on the number of federal and CFAP persons in combined households.

**TRENDS**

- **CFAP households increased 1.3% between May 2008 and June 2008.**  
2.0% increase in PA households  
1.2% increase in NA households
- **CFAP households increased 13.2% between June 2007 and June 2008.**  
12.4% increase in PA households  
13.3% increase in NA households
- **Effective April 2003, eligibility rule changes allowed certain CFAP recipients to convert to the federal food stamp program.**

a/ Used prior month data for: Solano (5/03).