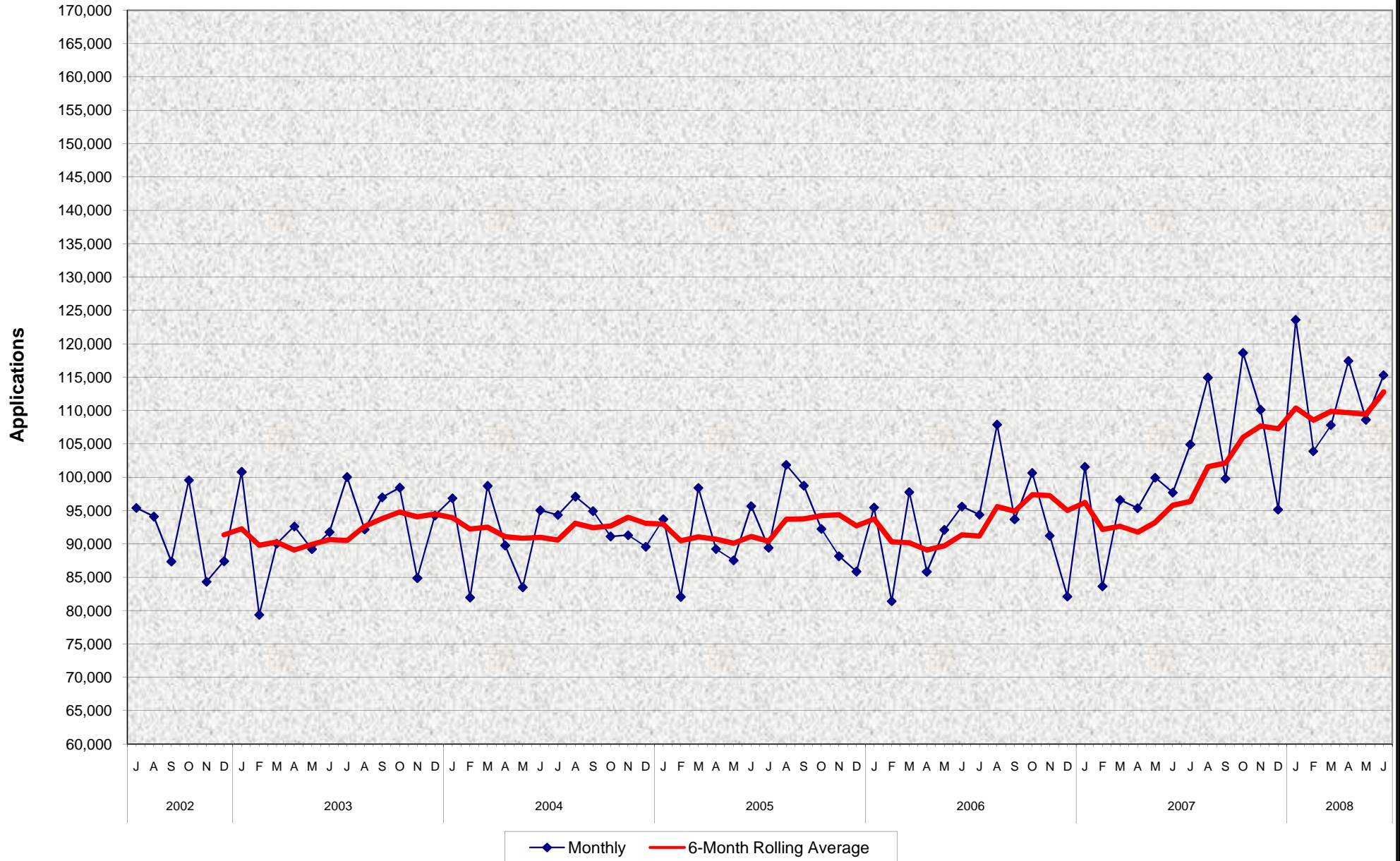


Food Stamp Program Food Stamp Applications July 2002 - June 2008



**Food Stamp Program
Food Stamp Applications
July 2002 - June 2008**

MONTHLY PERCENT CHANGE

	Jul	% Chg	Aug	% Chg	Sep	% Chg	Oct	% Chg	Nov	% Chg	Dec	% Chg	Jan	% Chg	Feb	% Chg	Mar	% Chg	Apr	% Chg	May	% Chg	Jun	% Chg
02/03	95,393	18.2%	94,109	-1.3%	87,352	-7.2%	99,552	14.0%	84,310	-15.3%	87,405	3.7%	100,798	15.3%	79,360	-21.3%	90,026	13.4%	92,618	2.9%	89,210	-3.7%	91,759	2.9%
03/04	100,037	9.0%	92,160	-7.9%	96,983	5.2%	98,430	1.5%	84,873	-13.8%	94,253	11.1%	96,841	2.7%	81,960	-15.4%	98,694	20.4%	89,769	-9.0%	83,487	-7.0%	95,040	13.8%
04/05	94,339	-0.7%	97,090	2.9%	94,919	-2.2%	91,117	-4.0%	91,298	0.2%	89,572	-1.9%	93,711	4.6%	82,059	-12.4%	98,402	19.9%	89,229	-9.3%	87,516	-1.9%	95,668	9.3%
05/06	89,419	-6.5%	101,846	13.9%	98,731	-3.1%	92,233	-6.6%	88,155	-4.4%	85,855	-2.6%	95,454	11.2%	81,392	-14.7%	97,765	20.1%	85,812	-12.2%	92,104	7.3%	95,607	3.8%
06/07	94,372	-1.3%	107,885	14.3%	93,688	-13.2%	100,637	7.4%	91,231	-9.3%	82,101	-10.0%	101,554	23.7%	83,641	-17.6%	96,589	15.5%	95,351	-1.3%	99,935	4.8%	97,697	-2.2%
07/08	104,904	7.4%	114,951	9.6%	99,786	-13.2%	118,644	18.9%	110,119	-7.2%	95,142	-13.6%	123,615	29.9%	103,900	-15.9%	107,815	3.8%	117,437	8.9%	108,618	-7.5%	115,303	6.2%

- Food Stamp applications increased 6.2% between May 2008 and June 2008.
- Food Stamp applications increased 18.0% between June 2007 and June 2008.