



"Linking Technology with Tradition"

Sanborn® Map Report

Ship to: Sarah Pollock

Ridolfi Engineers Inc.

1411 Fourth Avenue

Seattle, WA 98101

Order Date: 11/26/2002 **Completion Date:** 11/27/2002

Inquiry #: 888963.2S

P.O. #: 470e

Site Name: Poplar Point

Address: 705 Howard Rd SE

City/State: Washington D.C, DC 20020

6017523CUR

206-682-7294

Cross Streets:

Based on client-supplied information, fire insurance maps for the following years were identified

1927 - 2 - maps

1960 - 2 - maps

1985 - 2 - maps

1989 - 2 - maps

1990 - 2 - maps

1992 - 2 - maps

1995 - 2 - maps

Total Maps: 14

Limited Permission to Photocopy

Ridolfi Engineers Inc. (the client) is permitted to make up to THREE photocopies of this Sanborn Map transmittal and each fire insurance map accompanying this report solely for the limited use of its customer. No one other than the client is authorized to make copies. Upon request made directly to an EDR Account Executive, the client may be permitted to make a limited number of additional photocopies. This permission is conditioned upon compliance by the client, its customer and their agents with EDR's copyright policy; a copy of which is available upon request.

All maps provided pursuant to a Sanborn® Map Report are currently reproducible of fire insurance maps owned or licensed by Environmental Data Resources, Inc. NO WARRANTY, EXPRESSED OR IMPLIED IS MADE WHATSOEVER. ENVIRONMENTAL DATA RESOURCES, INC. SPECIFICALLY DISCLAIMS THE MAKING OF ANY SUCH WARRANTIES, INCLUDING WITHOUT LIMITATION, WARRANTIES AS TO ACCURACY, VALIDITY, COMPLETENESS, SUITABILITY, CONDITION, QUALITY, MERCHANTABILITY, OR FITNESS FOR A PARTICULAR USE OR PURPOSE WITH RESPECT TO THE REPORT, THE MAPS, THE INFORMATION CONTAINED THEREIN, OR THE RESULTS OF A SEARCH OR OTHERWISE. ALL RISK IS ASSUMED BY THE USER. Environmental Data Resources, Inc. assumes no liability to any party for any loss or damage whether arising out of errors or omissions, negligence, accident or any other cause. In no event shall Environmental Data Resources, Inc., its affiliates or agents, be liable to anyone for special, incidental, consequential or exemplary damages.

Electronic Sanborn Map Images USER'S GUIDE

Thank you for your interest in electronic Sanborn Map images. The following are guidelines for accessing the images and for transferring them to your system. If you have any questions about the use of electronic Sanborn Map images, contact your EDR Account Executive at 1-800-352-0050.

Organization of Electronic Sanborn Image File

- First Page Sanborn Map Report, listing years of coverage
- Second Page Electronic Sanborn Map Images USER'S GUIDE
- Third Page Oldest Sanborn Map Image
- Last Page Most recent Sanborn Map Image

Navigating the Electronic Sanborn Image File

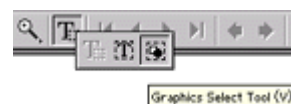
- Open file on screen.
- Identify TP (Target Property) on the most recent map.
- Find TP on older printed images.
- Using Acrobat, zoom to 250% in order to view more clearly.
 - 200-250% is the approximate equivalent scale of hardcopy Sanborn Maps.
- Zooming in on an image:
 - On the menu bar, click "View" and then zoom.
 - Use the magnifying tool and drag a box around the TP area.

Printing a Sanborn Map from the Electronic File

- EDR recommends printing all images at 300 dpi (300 dpi prints faster than 600 dpi).
- To print only the TP area, cut and paste the area from Adobe Acrobat to your word processor.

Acrobat Version 4

- Go to the Menu bar
- Press and hold the "T" button
- Choose the Graphics Select Tool
- Draw a box around the area selected
- Go to "Menu"
- Highlight "Edit"
- Highlight "Copy"
- Go to a word processor such as Microsoft Word, paste and print.



Acrobat Version 5

- Go to the Menu Bar.
- Click the "Graphics Select Tool"
- Draw a box around the area selected
- Go to "Menu"
- Highlight "Edit"
- Highlight "Copy"
- Go to a word processor such as Microsoft Word, paste and print.

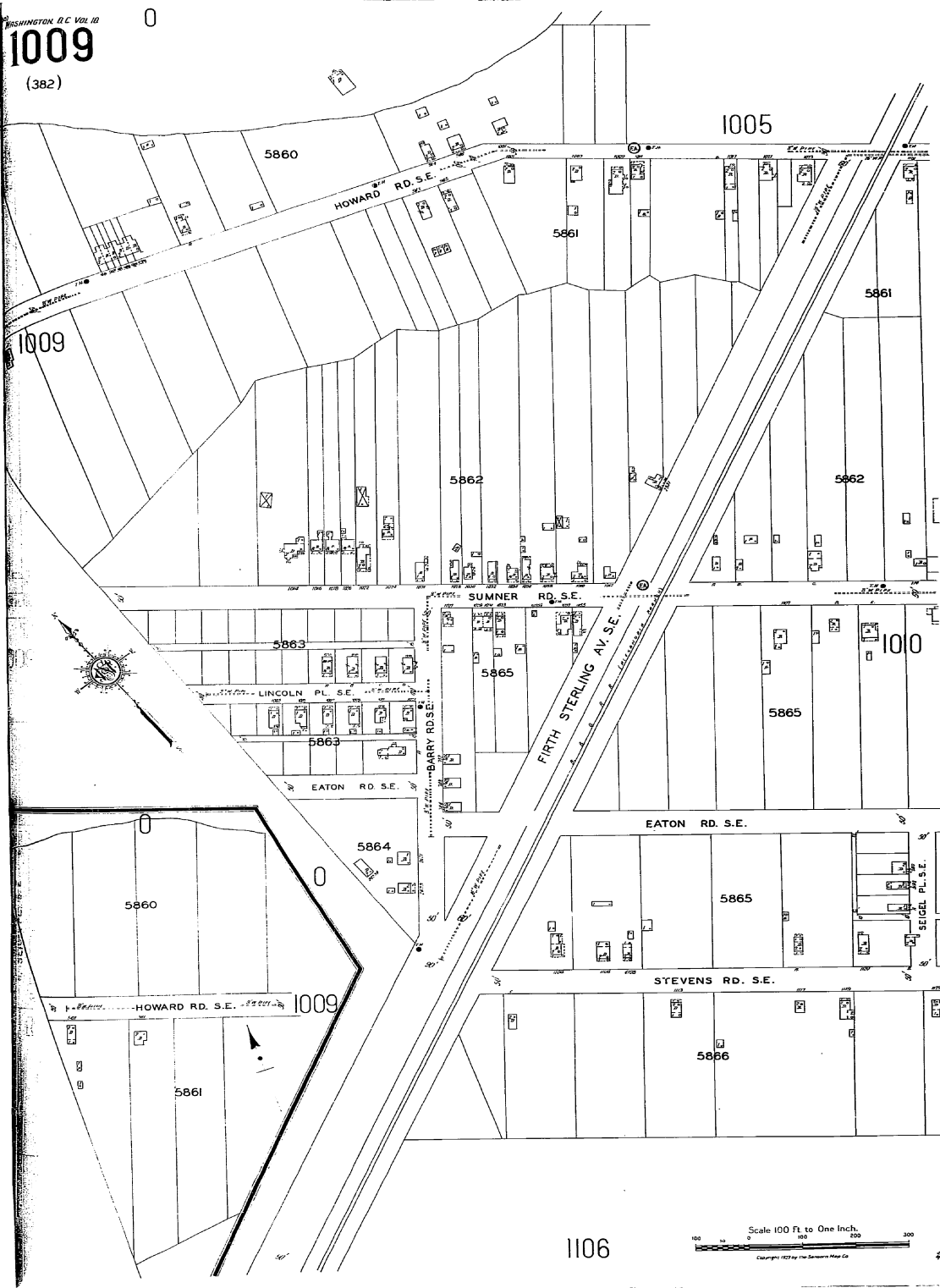


Important Information about Email Delivery of Electronic Sanborn Map Images

- Images are grouped into one file, up to 2MB.
- In cases where in excess of 6-7 map years are available, the file size typically exceeds 2MB. In these cases, you will receive multiple files, labeled as 1 of 3, 2 of 3, etc. including all available map years.
- Due to file size limitations, certain ISPs, including AOL, may occasionally delay or decline to deliver files. Please contact your ISP to identify their specific file size limitations.

WASHINGTON, D.C. VOL. 10
1009

(382)



The Sanborn Library, LLC

This Sanborn® Map is a certified copy produced by Environmental Data Resources, Inc. under arrangement with The Sanborn Library, LLC. Information on this Sanborn® Map is derived from Sanborn field surveys conducted in:

Copyright © 1927 The Sanborn Library, LLC MJP
Year EDR Research Associate

Reproduction in whole or in part of any map of The Sanborn Library, LLC may be prohibited without prior written permission from The Sanborn Library, LLC.

WASHINGTON, D.C. VOL. 10
1005
(239-382)

1009

0

1009

RD. S.E.

HOWARD

1008

1008

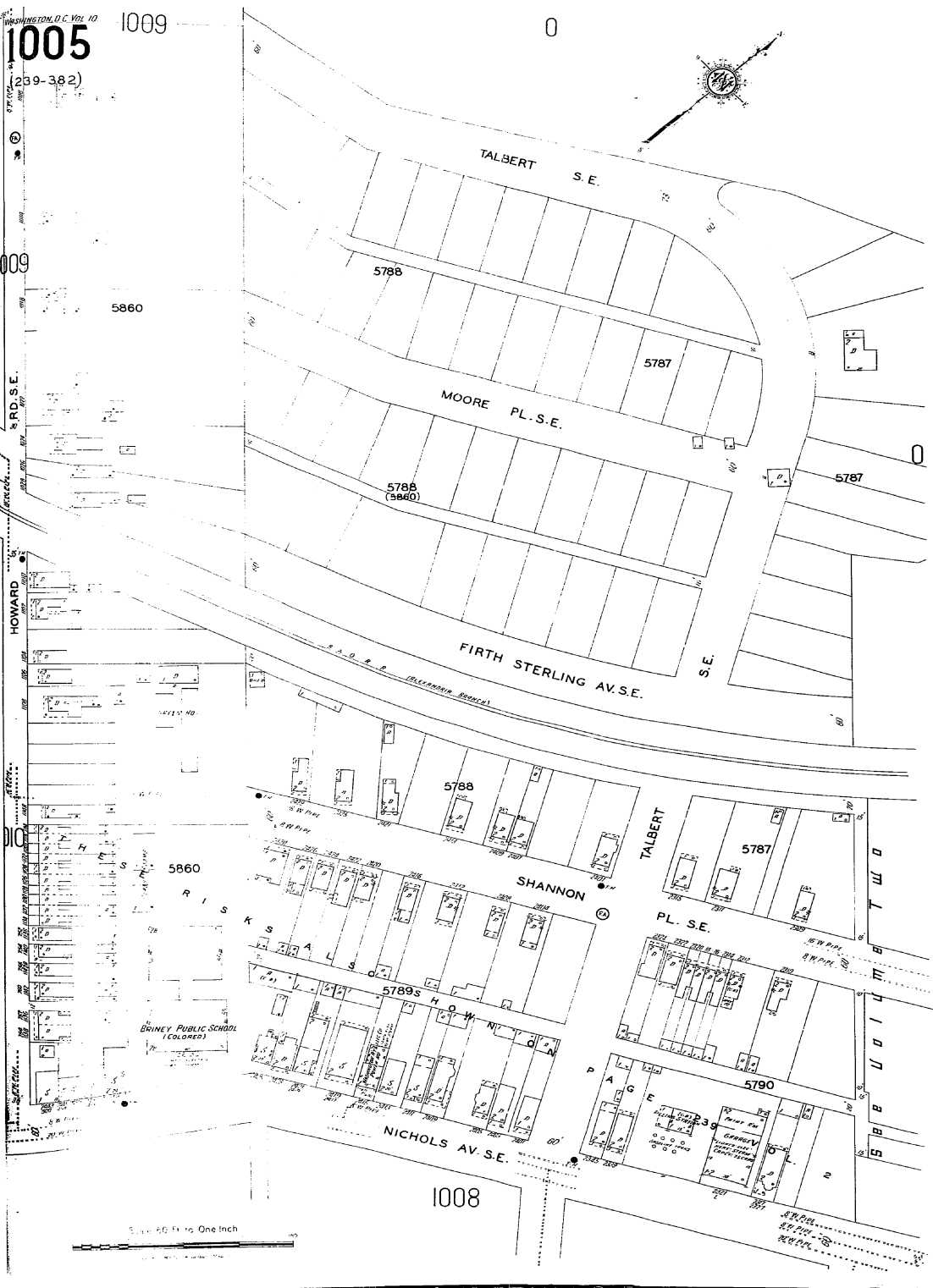
1008

1008

1008

1008

1008



Scale 20 Feet to One Inch

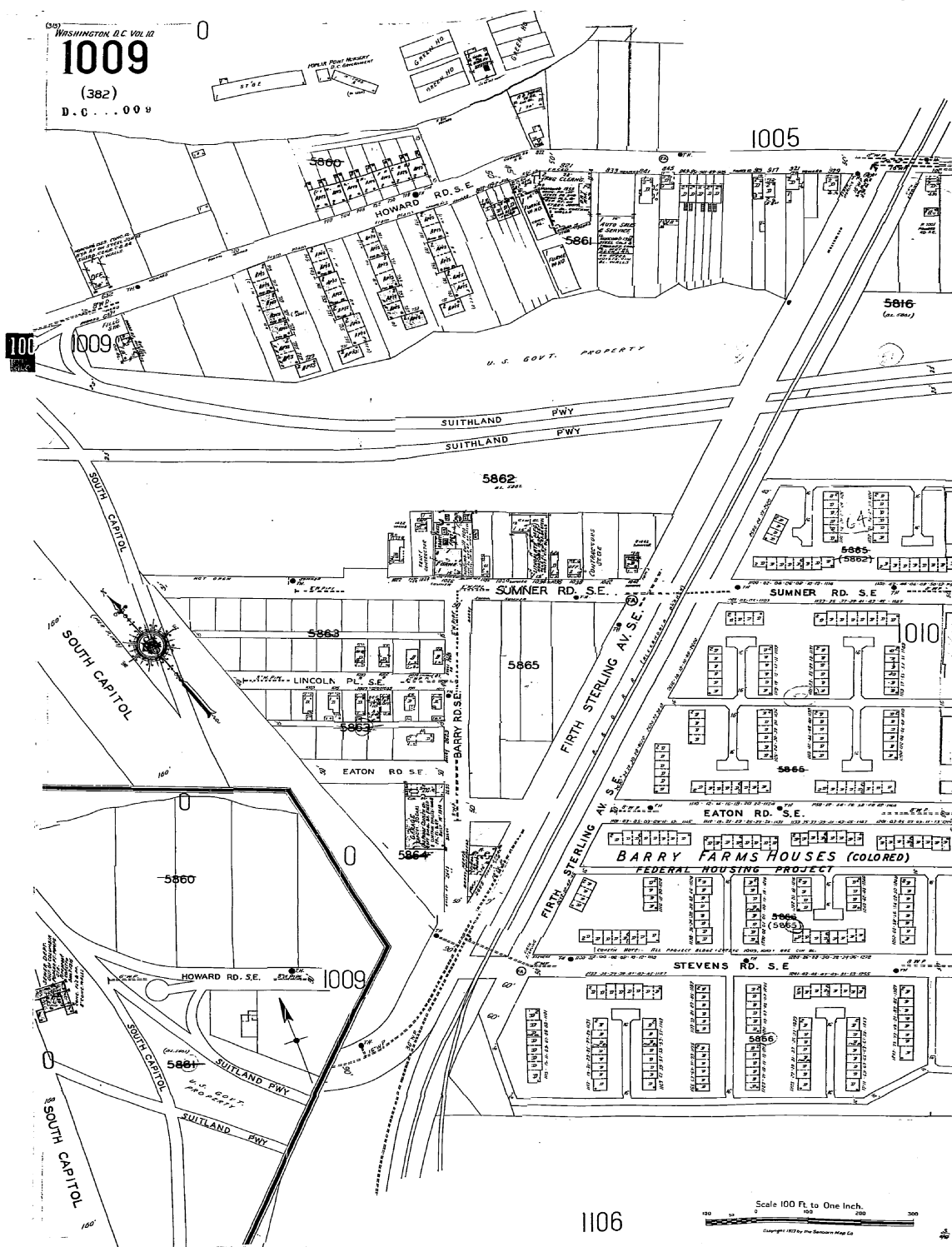


The Sanborn Library, LLC

This Sanborn® Map is a certified copy produced by Environmental Data Resources, Inc. under arrangement with The Sanborn Library, LLC. Information on this Sanborn® Map is derived from Sanborn field surveys conducted in:

Copyright © 1927 The Sanborn Library, LLC MJP
Year EDR Research Associate

Reproduction in whole or in part of any map of The Sanborn Library, LLC may be prohibited without prior written permission from The Sanborn Library, LLC.



The Sanborn Library, LLC

This Sanborn® Map is a certified copy produced by Environmental Data Resources, Inc. under arrangement with The Sanborn Library, LLC. Information on this Sanborn® Map is derived from Sanborn field surveys conducted in:

Copyright © 1960 The Sanborn Library, LLC MJP
 Year EDR Research Associate

Reproduction in whole or in part of any map of The Sanborn Library, LLC may be prohibited without prior written permission from The Sanborn Library, LLC.

000
WASHINGTON D.C. VOL. 10
1005 1009

1009

RD. S. E.

HOWARD

1010

5860

TURNER PUBLIC SCHOOL
BANKS
(SCHOOL)
BUILT 1907-1908

1008

Scale 60 Ft. to One Inch

Copyright 1967 by The Sanborn Map Co.

TALBERT S. E.

MOORE PL. S. E.

FIRTH STERLING AV. S. E.

SHANNON

NICHOLS AV. S. E.

1006

TALBERT

PL S. E.



The Sanborn Library, LLC

This Sanborn® Map is a certified copy produced by Environmental Data Resources, Inc. under arrangement with The Sanborn Library, LLC. Information on this Sanborn® Map is derived from Sanborn field surveys conducted in:

Copyright © 1960 The Sanborn Library, LLC MJP
Year EDR Research Associate

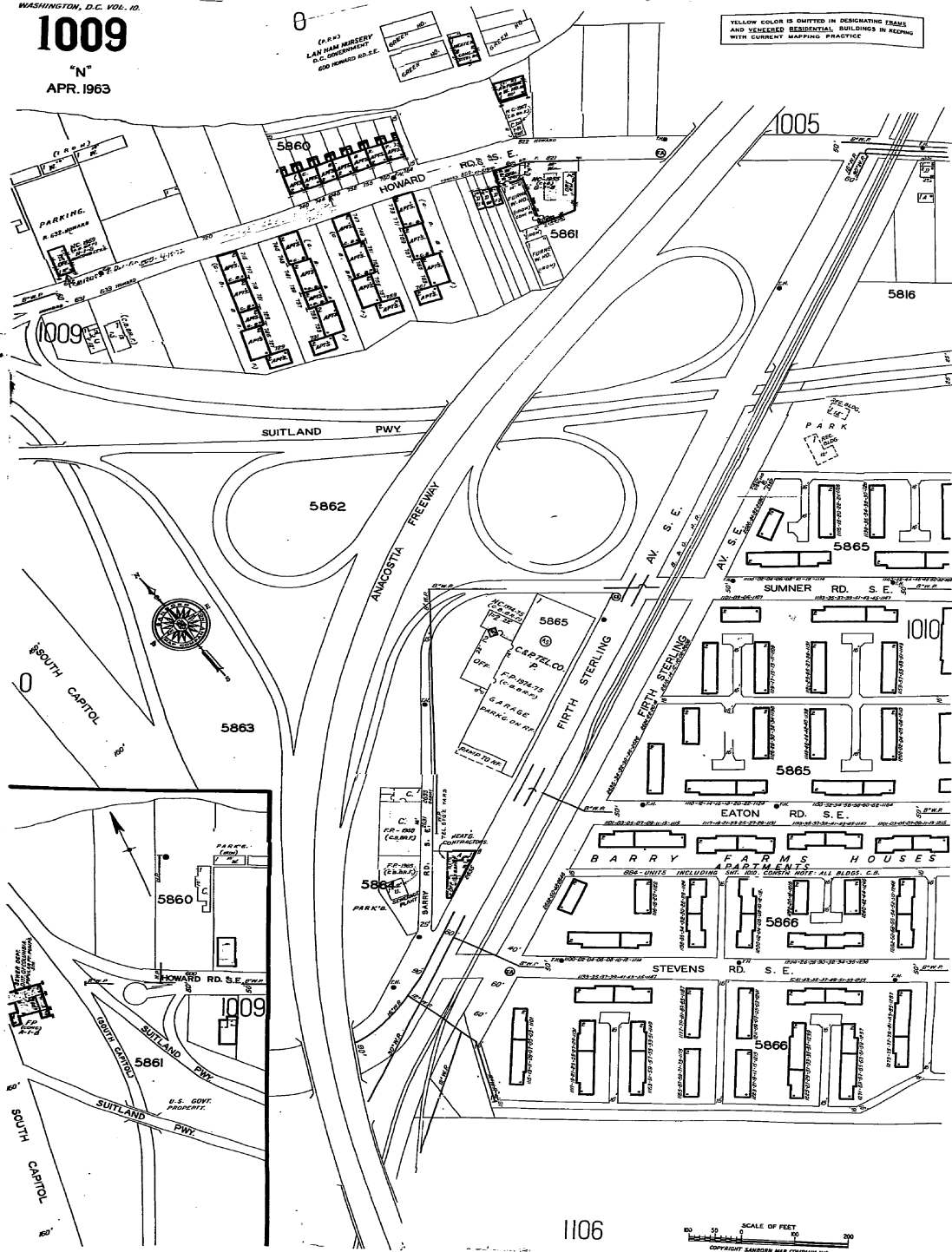
Reproduction in whole or in part of any map of The Sanborn Library, LLC may be prohibited without prior written permission from The Sanborn Library, LLC.

WASHINGTON, D.C. VOL. 10

1009

"N"
APR. 1963

YELLOW COLOR IS OMITTED IN DESIGNATING CRACKS
AND VENEERED RESIDENTIAL BUILDINGS IN REDDING
WITH CURRENT MAPPING PRACTICE



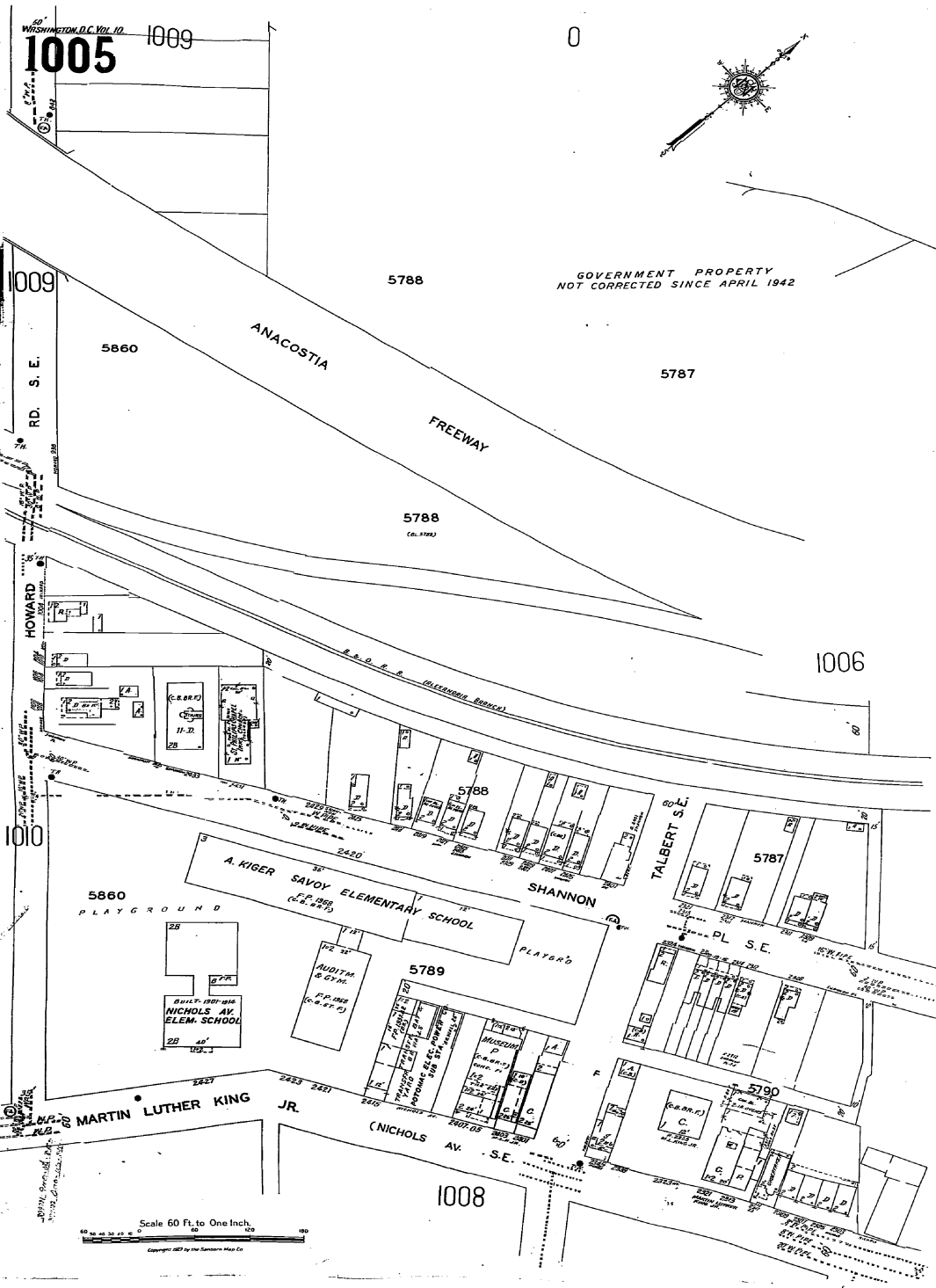
The Sanborn Library, LLC

This Sanborn® Map is a certified copy produced by
Environmental Data Resources, Inc. under arrangement with
The Sanborn Library, LLC. Information on this Sanborn® Map
is derived from Sanborn field surveys conducted in:

Copyright © 1985 The Sanborn Library, LLC

MJP
EDR Research Associate

Reproduction in whole or in part of any map of The Sanborn Library, LLC may be prohibited without prior
written permission from The Sanborn Library, LLC.



The Sanborn Library, LLC

This Sanborn® Map is a certified copy produced by Environmental Data Resources, Inc. under arrangement with The Sanborn Library, LLC. Information on this Sanborn® Map is derived from Sanborn field surveys conducted in:

Copyright © 1985 The Sanborn Library, LLC MJP
Year EDR Research Associate

Reproduction in whole or in part of any map of The Sanborn Library, LLC may be prohibited without prior written permission from The Sanborn Library, LLC.

WASHINGTON, D.C. VOL. 10

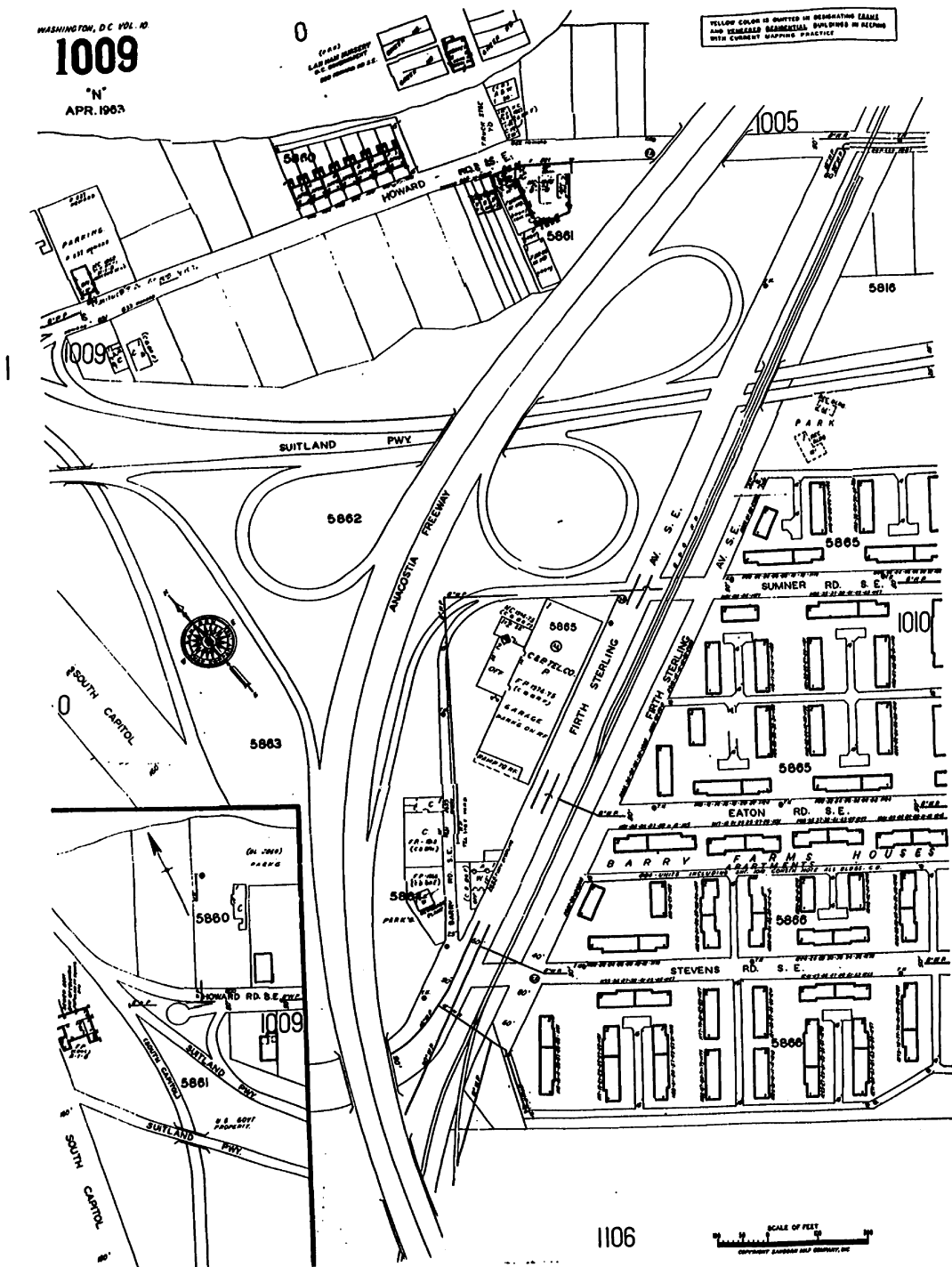
1009

"N"
APR. 1983

0

(1983)
LAWSON PROPERTY
100 S.W. 100
AND ADJACENT TO S.E.

YELLOW COLOR IS SHOWN IN DEMONSTRATING TABLE
AND CHANGES IN MATERIAL BUILDINGS IN RECORD
WITH CURRENT MAPPING PRACTICE



© 1989 Sanborn Co., EDR Sanborn, Inc.



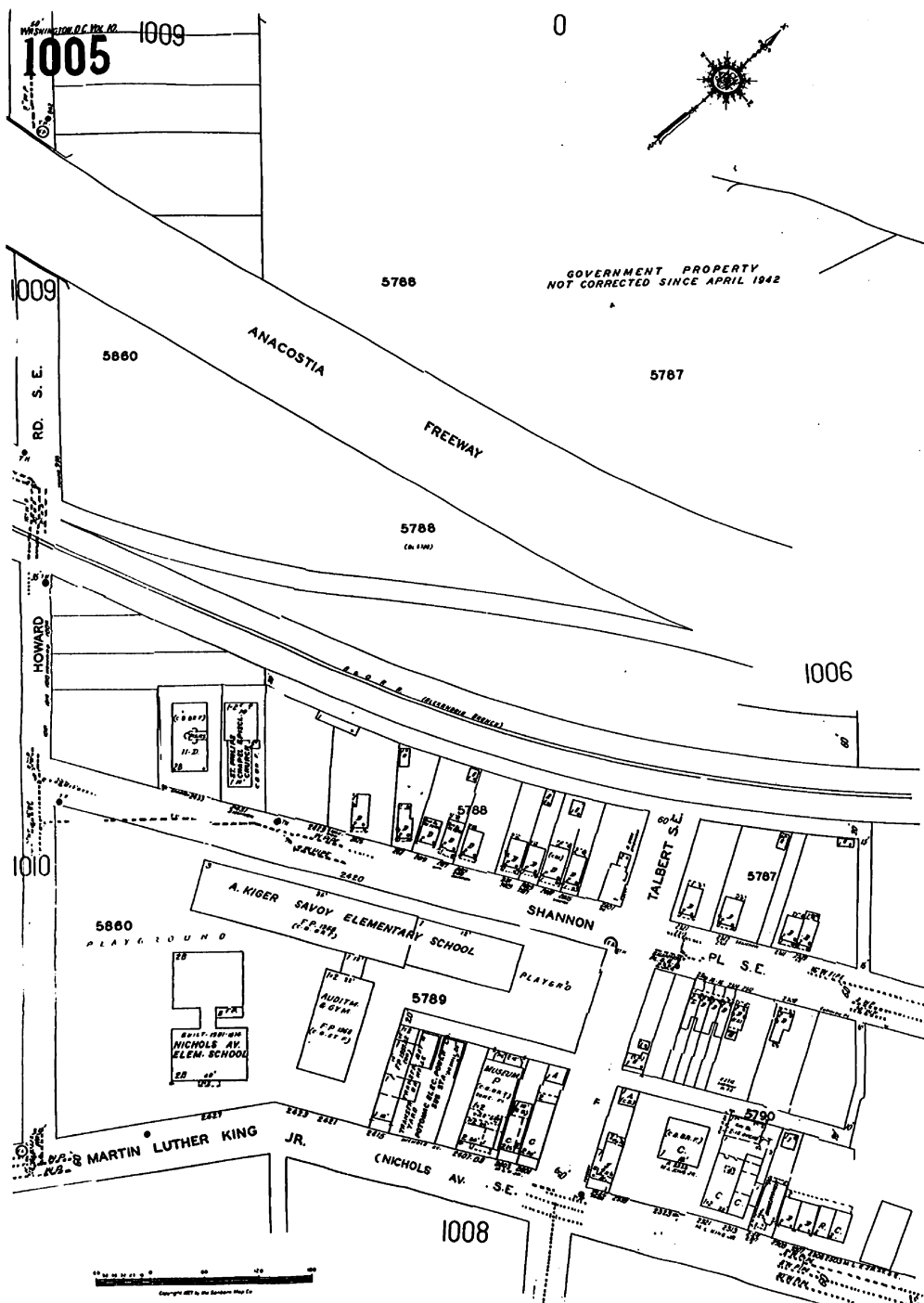
The Sanborn Library, LLC

This Sanborn® Map is a certified copy produced by
Environmental Data Resources, Inc. under arrangement with
The Sanborn Library, LLC. Information on this Sanborn® Map
is derived from Sanborn field surveys conducted in:

Copyright © 1989 The Sanborn Library, LLC

MJP
EDR Research Associate

Reproduction in whole or in part of any map of The Sanborn Library, LLC may be prohibited without prior
written permission from The Sanborn Library, LLC.



© 1989 Sanborn Co., EDR Sanborn, Inc.



The Sanborn Library, LLC

This Sanborn® Map is a certified copy produced by Environmental Data Resources, Inc. under arrangement with The Sanborn Library, LLC. Information on this Sanborn® Map is derived from Sanborn field surveys conducted in:

Copyright © 1989 The Sanborn Library, LLC MJP
Year EDR Research Associate

Reproduction in whole or in part of any map of The Sanborn Library, LLC may be prohibited without prior written permission from The Sanborn Library, LLC.

'N'
APR. 1983

YELLOW COLOR IS OMITTED IN DESIGNATING FRAME
AND VENEERED RESIDENTIAL BUILDINGS IN KEEPING
WITH CURRENT MAPPING PRACTICE

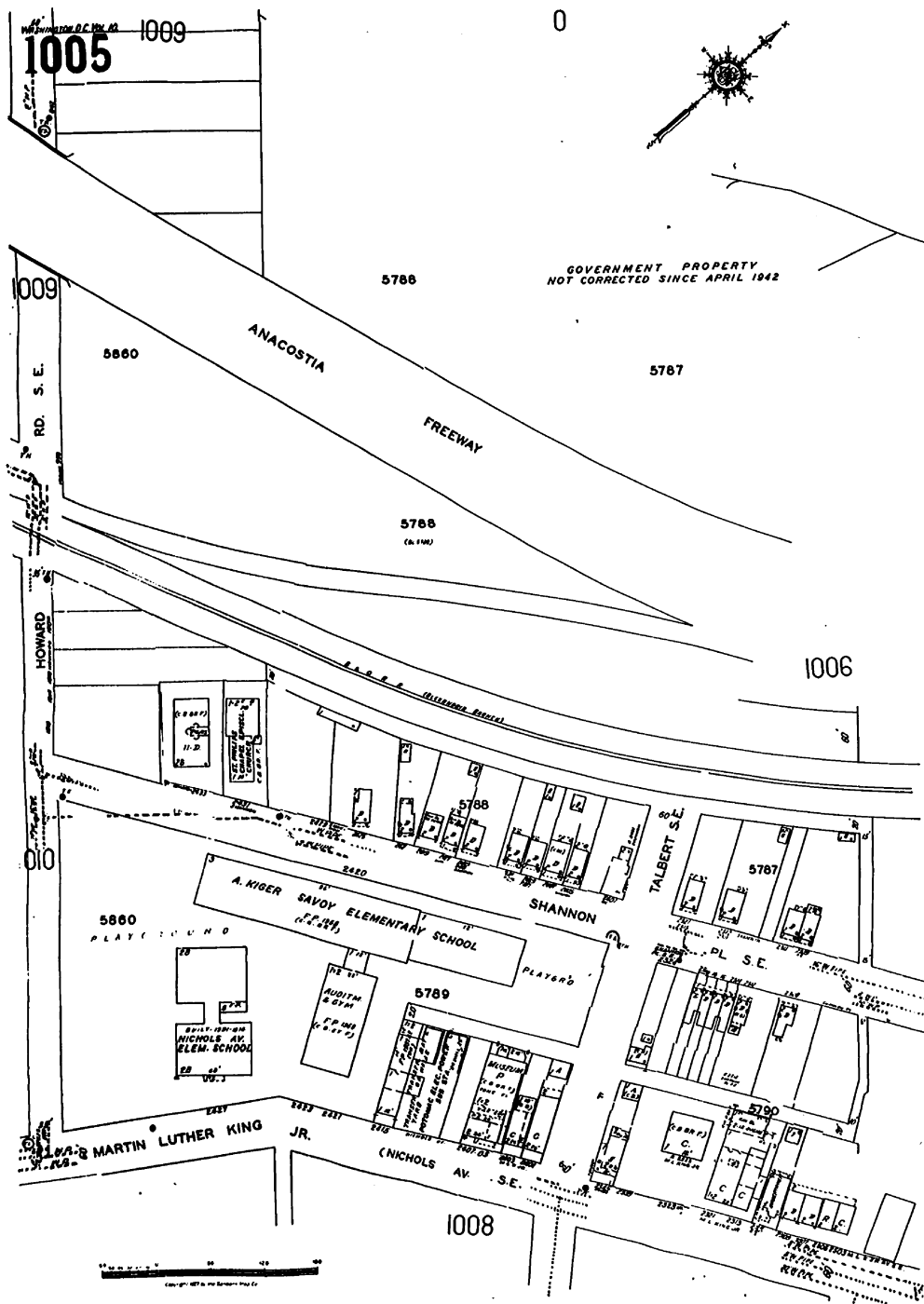


This Sanborn® Map is a certified copy produced by Environmental Data Resources, Inc. under arrangement with The Sanborn Library, LLC. Information on this Sanborn® Map is derived from Sanborn field surveys conducted in:

Copyright © 1990 The Sanborn Library, LLC
Year

EDR Research Associates

Reproduction in whole or in part of any map of The Sanborn Library, LLC may be prohibited without prior written permission from The Sanborn Library, LLC.



©1990 Sanborn Co., EDR Sanborn, Inc.



The Sanborn Library, LLC

This Sanborn® Map is a certified copy produced by Environmental Data Resources, Inc. under arrangement with The Sanborn Library, LLC. Information on this Sanborn® Map is derived from Sanborn field surveys conducted in:

Copyright © 1990 The Sanborn Library, LLC MJP
Year EDR Research Associate

Reproduction in whole or in part of any map of The Sanborn Library, LLC may be prohibited without prior written permission from The Sanborn Library, LLC.