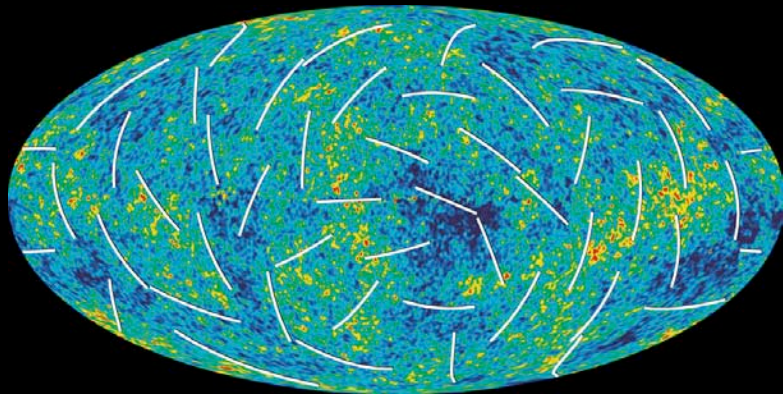




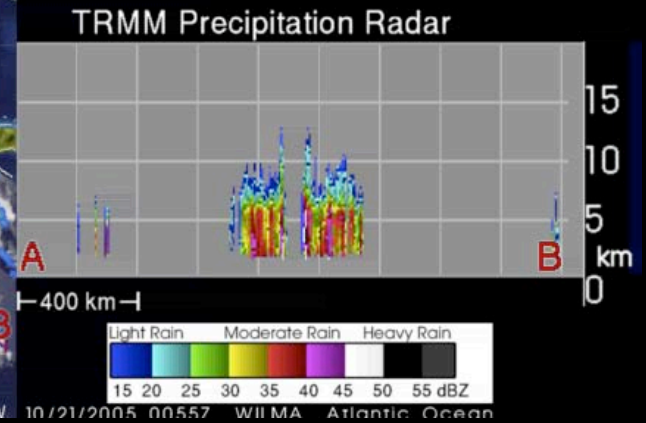
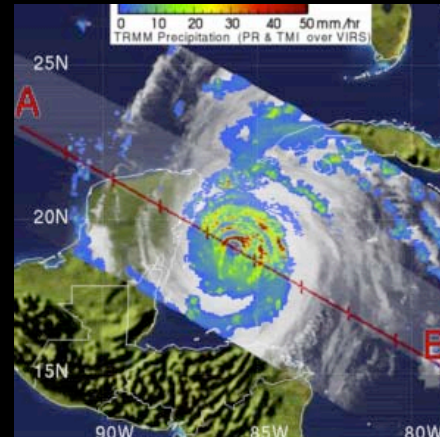
Science Planning Conference Science Mission Directorate Overview

**Dr. Mary Cleave
May 3, 2006**

Science Highlights



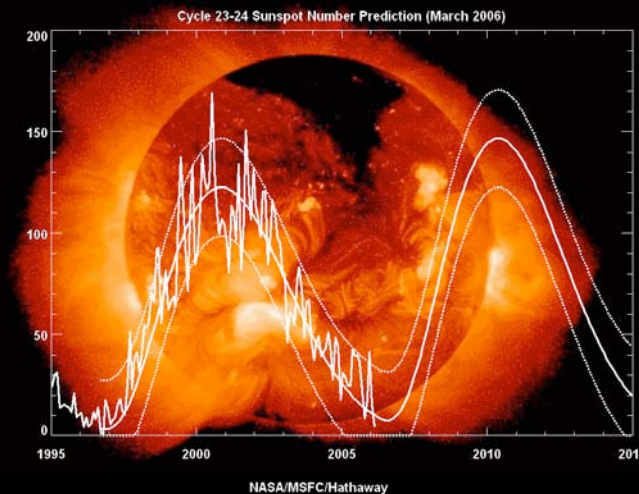
WMAP Glimpses the Universe's First Trillionth of a Second



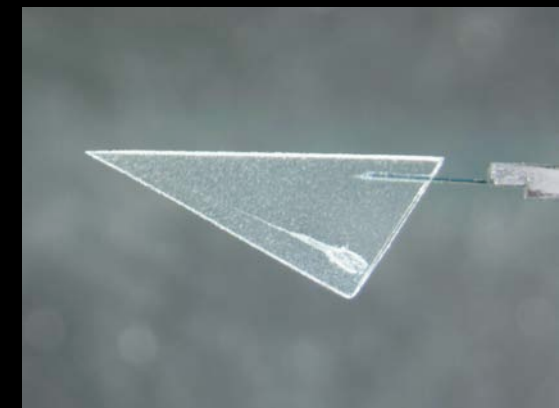
The Eye of Hurricane Wilma through the Eyes of TRMM



New Horizons is Off to Pluto

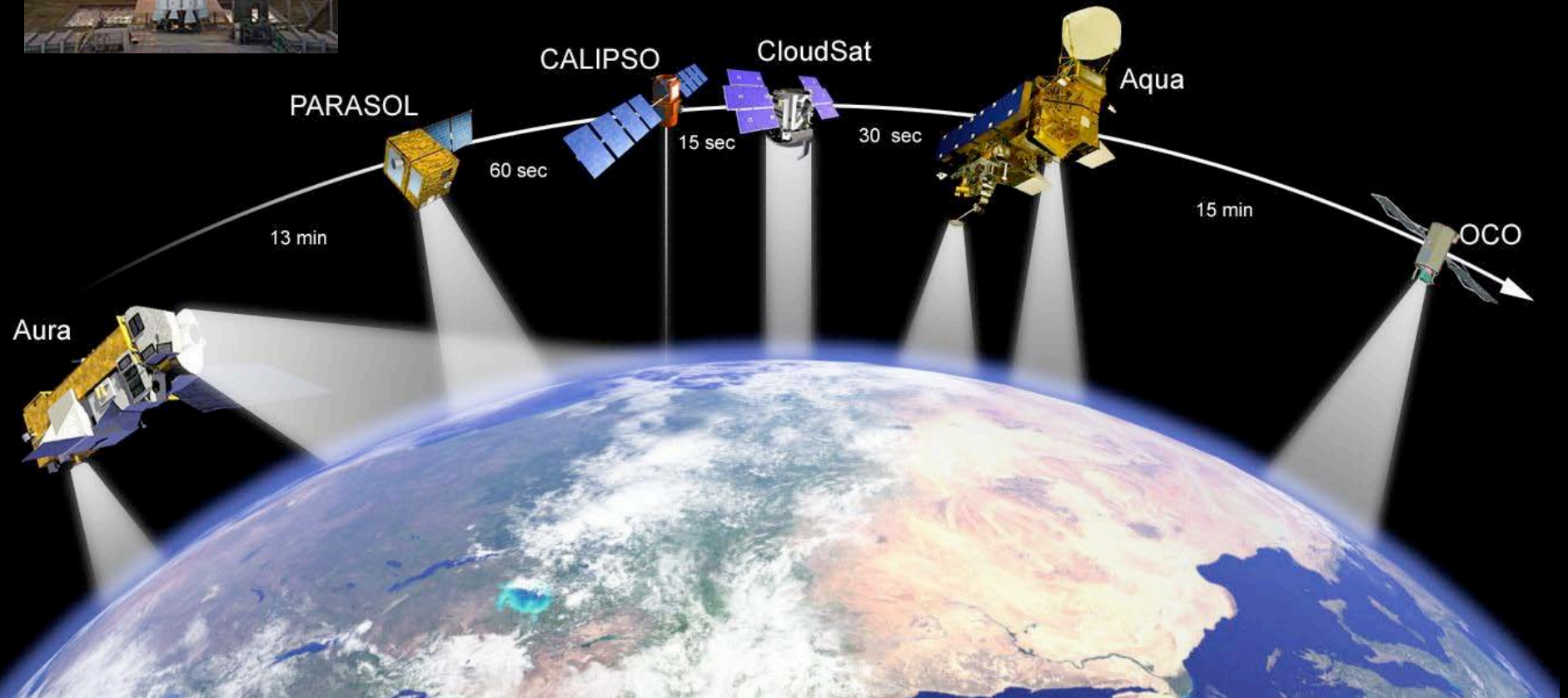


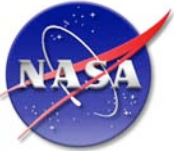
Predicting Solar Cycle Intensity with SOHO



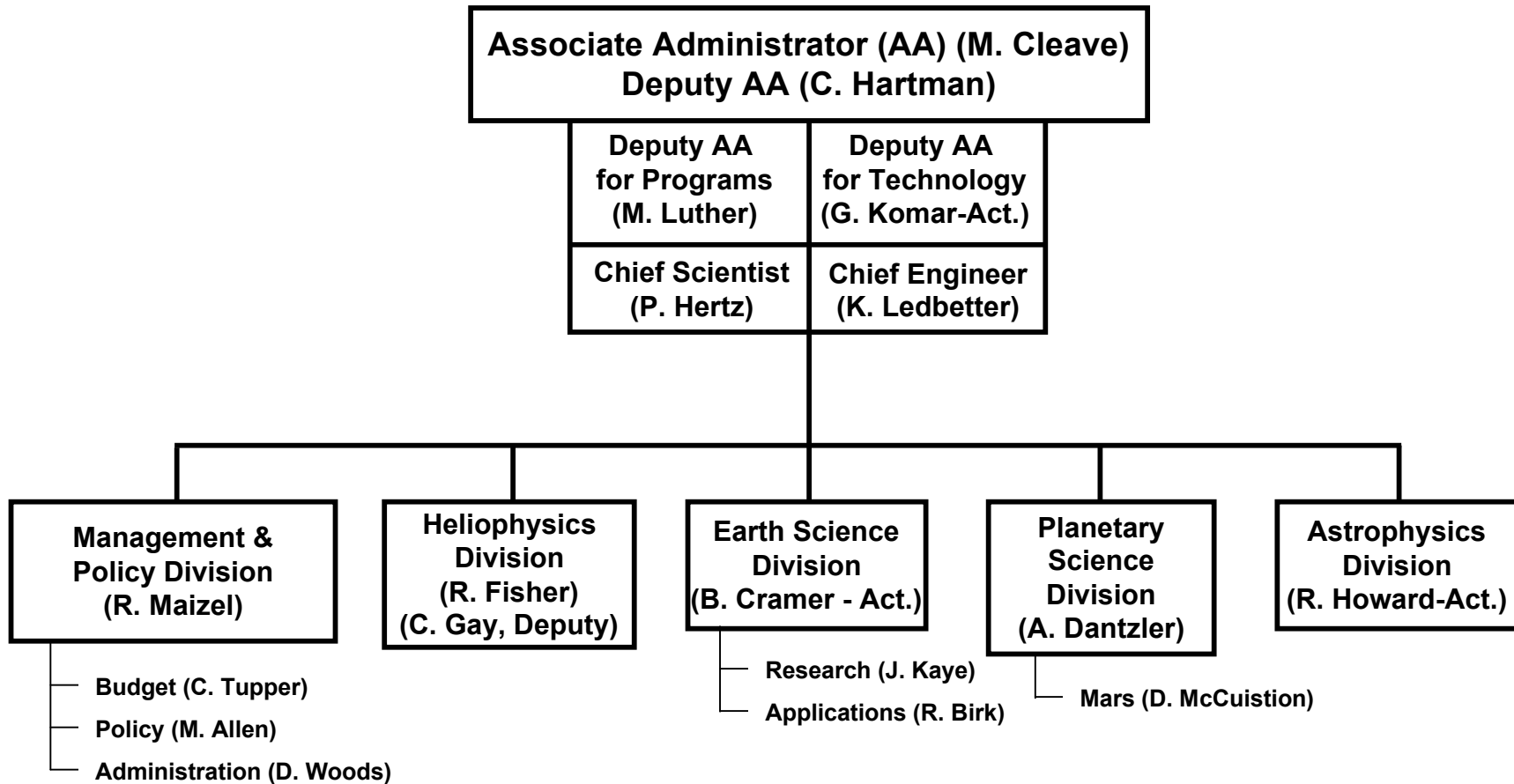
Stardust's Successful Comet Sample Return

CloudSat and CALIPSO Join the A-Train



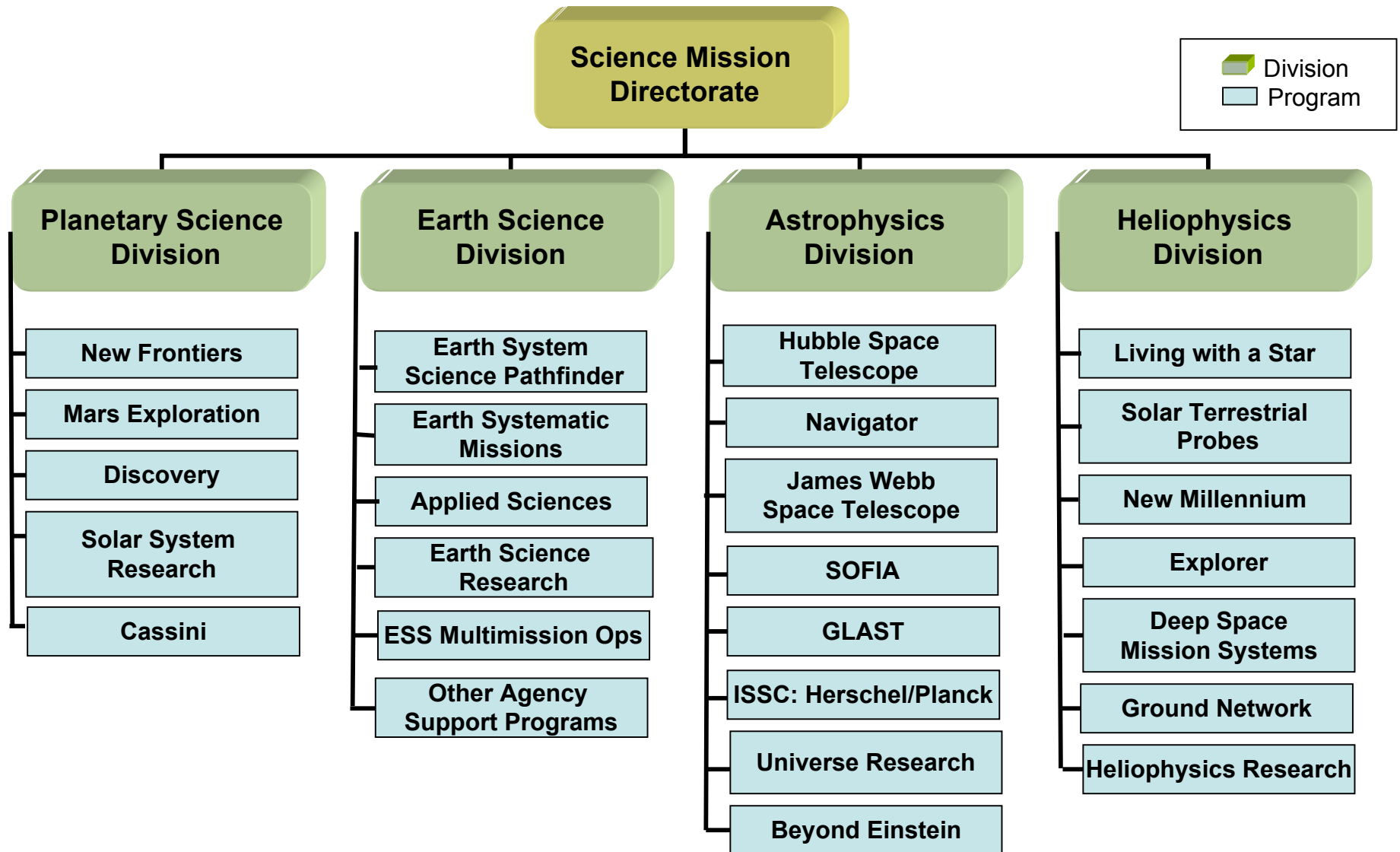


Science Mission Directorate Organization Chart





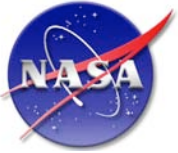
SMD Programs





Two Big Issues for This Meeting

- **Do we have an appropriate mix of R&A, small missions, large missions and other activities in each of the four science areas in the FY07 request?**
 - NASA will use the results of this meeting as inputs to FY07 operating plan and FY08 budget request formulation
- **What should a NASA Science Plan contain to guide us in making the optimal use the resources available to make the most progress?**
 - NASA will use the results of this meeting to create a complete draft of the Science Plan, and will work with the Subcommittees and the NASA Science Council through the Fall to mature it for submission to the Congress in December



Science Mission Directorate FY 2007 Budget

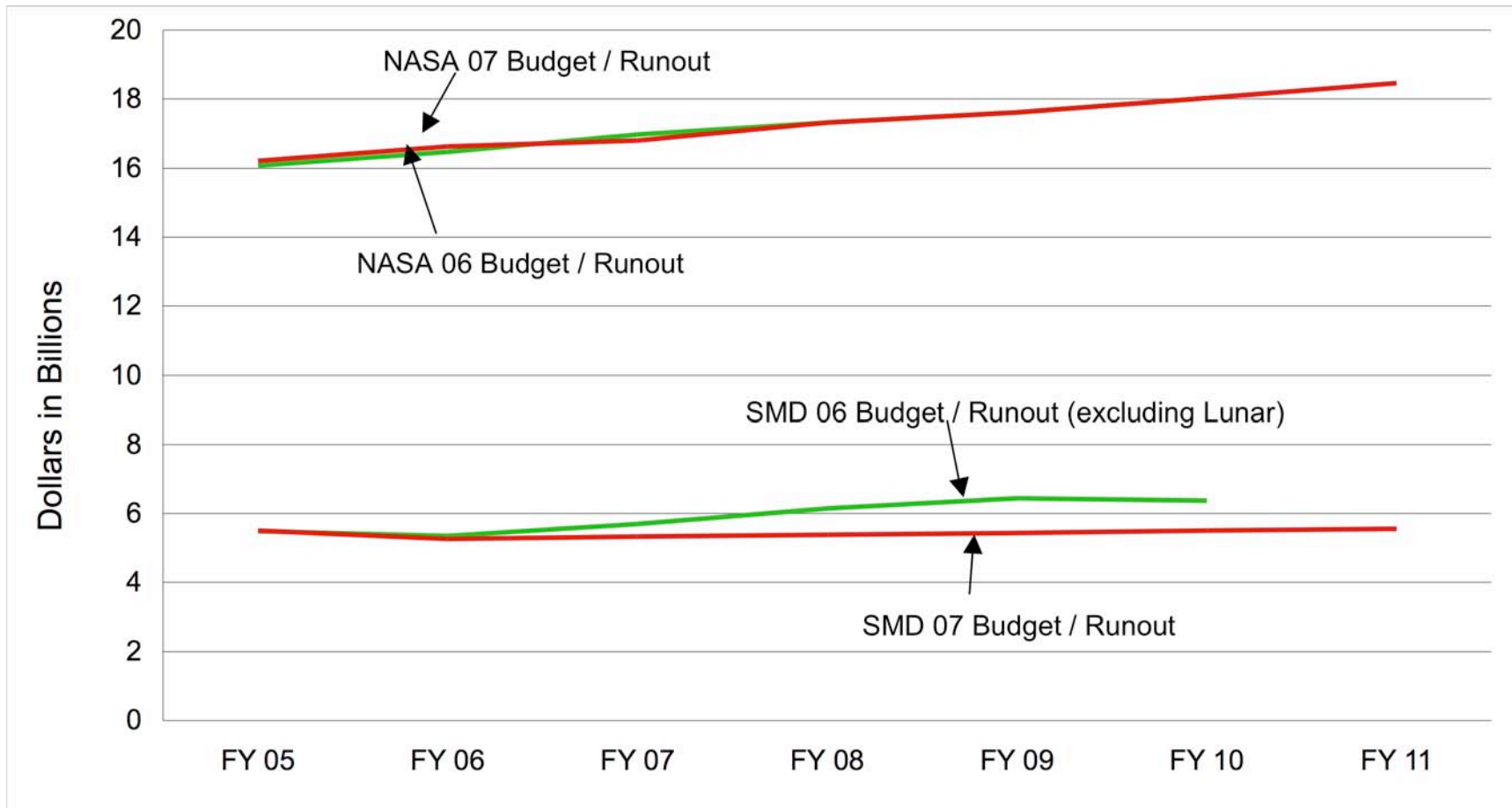


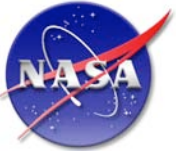
FY07 NASA Budget (\$M)

	FY 05	FY 06	FY 07	FY 08	FY 09	FY 10	FY 11
<u>Total NASA</u>	<u>\$16,196.4</u>	<u>\$16,623.0</u>	<u>\$16,792.3</u>	<u>\$17,309.4</u>	<u>\$17,614.2</u>	<u>\$18,026.3</u>	<u>\$18,460.4</u>
<u>Science</u>	<u>\$5,501.6</u>	<u>\$5,253.7</u>	<u>\$5,330.0</u>	<u>\$5,383.1</u>	<u>\$5,437.1</u>	<u>\$5,491.5</u>	<u>\$5,546.4</u>
Solar System Exploration	\$1,720.5	\$1,582.3	\$1,610.2	\$1,598.6	\$1,840.4	\$1,899.6	\$1,846.7
The Universe	\$1,474.9	\$1,507.9	\$1,509.2	\$1,500.9	\$1,307.9	\$1,276.1	\$1,309.7
Earth-Sun System	\$2,306.2	\$2,163.5	\$2,210.6	\$2,283.7	\$2,288.9	\$2,315.8	\$2,390.0
<u>Exploration Systems</u>	<u>\$2,209.3</u>	<u>\$3,050.1</u>	<u>\$3,978.3</u>	<u>\$3,981.6</u>	<u>\$4,499.8</u>	<u>\$5,055.9</u>	<u>\$8,775.1</u>
Constellation Systems	\$422.3	\$1,733.5	\$3,057.6	\$3,067.6	\$3,612.9	\$4,083.8	\$7,698.4
Exploration Systems R & T	\$898.9	\$692.5	\$646.1	\$632.2	\$605.1	\$679.2	\$764.6
Human Systems R & T	\$888.1	\$624.1	\$274.6	\$281.8	\$281.8	\$292.8	\$312.1
Aeronautics Research	\$962.0	\$884.1	\$724.4	\$731.8	\$732.4	\$722.8	\$722.7
<u>Space Operations</u>	<u>\$7,114.4</u>	<u>\$6,869.7</u>	<u>\$6,234.4</u>	<u>\$6,680.4</u>	<u>\$6,442.3</u>	<u>\$6,242.9</u>	<u>\$2,896.7</u>
Space Shuttle	\$5,049.2	\$4,777.5	\$4,056.7	\$4,087.3	\$3,794.8	\$3,651.1	\$146.7
International Space Station	\$1,591.3	\$1,753.4	\$1,811.3	\$2,200.3	\$2,255.6	\$2,197.1	\$2,360.8
Space and Flight Support (SFS)	\$473.9	\$338.8	\$366.5	\$392.8	\$392.0	\$394.7	\$389.2
Inspector General	\$31.3	\$32.0	\$33.5	\$34.6	\$35.5	\$36.4	\$37.3
<u>Cross-Agency Support Programs</u>	<u>\$377.8</u>	<u>\$533.5</u>	<u>\$491.7</u>	<u>\$497.9</u>	<u>\$467.1</u>	<u>\$476.8</u>	<u>\$482.2</u>
Education Theme	\$178.9	\$162.4	\$153.3	\$152.4	\$153.1	\$154.0	\$153.3
Advanced Business Systems (IEMP)	\$0.0	\$156.3	\$108.2	\$106.9	\$73.8	\$78.5	\$80.6
Innovative Partnership Programs	\$198.9	\$214.8	\$197.9	\$205.5	\$206.2	\$209.7	\$212.9
Shared Capability Assets Program	\$0.0	\$0.0	\$32.2	\$33.1	\$33.9	\$34.7	\$35.5



FY06 vs. FY07 Budget Comparison





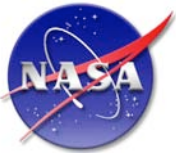
Science Budget Strategy

- **To support Space Operations Mission Directorate requirements within a fixed Agency budget, reductions to previous Science planning are necessary**
- **Science gets 1.5% growth from FY06 to 07, 1% per year thereafter**
 - \$3.1B decrease from FY06 Budget runout
- **Strategy for Adjustments**
 - Develop an executable program based on strategic National Academy science priorities



Budget Comparison by Theme

	FY06	FY07	FY08	FY09	FY10	FY11	Total Changes
Total Science							
FY 06 President's Budget, excluding Lunar	5,341.7	5,684.2	6,132.0	6,436.8	6,370.7		
FY 07 President's Budget	5,253.7	5,330.0	5,383.1	5,437.1	5,491.5	5,546.4	
Changes	-88.0	-354.2	-748.9	-999.7	-879.2		-3,070.0
Earth-Sun Systems							
FY 06 President's Budget	2,063.6	2,081.2	2,132.2	2,359.0	2,324.8		
FY 07 President's Budget	2,163.5	2,210.6	2,283.7	2,288.9	2,315.8	2,390.0	
Changes	99.9	129.5	151.5	-70.2	-9.0		301.8
Solar System Exploration							
FY 06 President's Budget, excluding Lunar	1,765.9	2,071.5	2,460.5	2,582.7	2,639.2		
FY 07 President's Budget	1,582.3	1,610.2	1,598.6	1,840.4	1,899.6	1,846.7	
Changes	-183.6	-461.4	-861.9	-742.4	-739.6		-2,988.8
The Universe							
FY 06 President's Budget	1,512.2	1,531.5	1,539.4	1,495.0	1,406.7		
FY 07 President's Budget	1,507.9	1,509.2	1,500.9	1,307.9	1,276.1	1,309.7	
Changes	-4.3	-22.3	-38.5	-187.2	-130.6		-382.9



NASA Science Mission Launches (CY05-CY13)

Based on the FY2007 Budget

