



**Recreation Fee Program**

**2007 Accomplishments**

- Partially funded 10 seasonal employees who performed operation and maintenance work at campgrounds across the Forest. This work would not have been accomplished without these funds.
- Constructed new group picnic tables at three group sites.
- Partially funded the subsistence for 13 full-time volunteers. These volunteers assisted with campground operation and maintenance work, staffed Stuart Guard Station Interpretive Site, and provided an enhanced visitor presence.
- Funded five permanent staff members responsible for administration of outfitter and guide permits. This funding enabled them to more effectively administer the wide range of outfitter and guide opportunities on the Forest.



*Scouts construct a new picnic table.*

*Some 2007 seasonal and volunteer workers gathered on the forest.*



**Special Feature**



*Kiteboarding has become a very popular outfitter and guide activity.*

**Manti-La Sal National Forest Revenue & Expenditures**

Revenue*	
Source	Amount
Interagency Pass Sales	\$820
Recreation Fees	\$135,204
Special Uses	\$65,797
<b>Total</b>	<b>\$201,821</b>

Expenditures	
Categories	Amount
Cost of Collection	\$7,406
Law Enforcement	\$0
Maintenance & Repair	\$46,946
Visitor Services	\$27,817
Habitat Restoration	\$0
Fee Agreements	\$0
<b>Total</b>	<b>\$82,169</b>

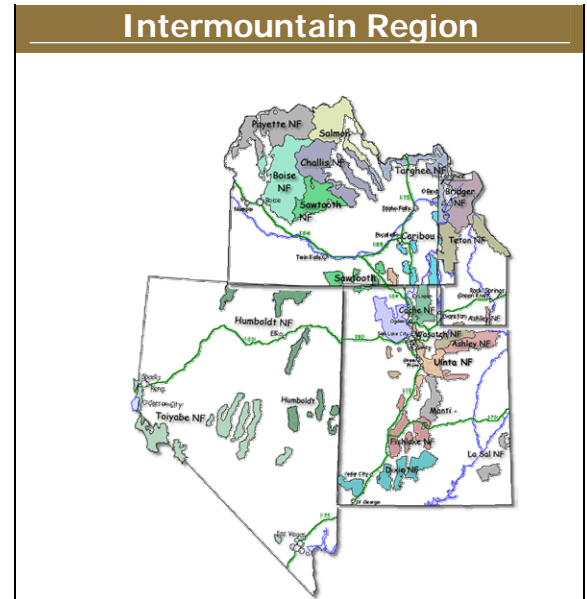
\*Surplus revenues are held over to fund large projects.

# Recreation Fee Program



## Projects Planned for 2008

- Will continue to augment seasonal salaries and volunteer subsistence to accomplish operation and maintenance activities and to enhance visitor services at REA sites across the Forest.
- Will continue to fund a portion of permanent employee salaries to accomplish outfitter & guide administration.
- Will add several new sites in 2008 including two cabin rentals.



## Intermountain Region Revenue & Expenditures

Revenue*	
Source	Amount
Interagency Pass Sales	\$132,343
Recreation Fees	\$2,088,882
Special Uses	\$2,688,131
<b>Total</b>	<b>\$4,909,356</b>

Expenditures	
Categories	Amount
Cost of Collection	\$217,296
Law Enforcement	\$186,334
Maintenance & Repair	\$1,624,741
Visitor Services	\$1,265,971
Habitat Restoration	\$10,427
Fee Agreements	\$149,456
<b>Total</b>	<b>\$3,454,225</b>

\*Surplus revenues are held over to fund large projects.

### Information:

435-636-3516

Email: [bbroadbear@fs.fed.us](mailto:bbroadbear@fs.fed.us)

[www.fs.fed.us/r4/mantilasal](http://www.fs.fed.us/r4/mantilasal)

The U.S. Department of Agriculture (USDA) prohibits discrimination in all its programs and activities on the basis of race, color, national origin, age, disability, and where applicable, sex, marital status, familial status, parental status, religion, sexual orientation, genetic information, political beliefs, reprisal, or because all or part of an individual's income is derived from any public assistance program. (Not all prohibited bases apply to all programs.) Persons with disabilities who require alternative means for communication of program information (Braille, large print, audio tape, etc.) should contact USDA's TARGET Center at (202) 720-2600 (voice and TDD). To file a complaint of discrimination, write to USDA, Director, Office of Civil Rights, 1400 Independence Avenue, S.W., Washington, DC 20250-9410, or call (800) 795-3272 (voice) or (202) 720-6382 (TDD). USDA is an equal opportunity provider and employer.