

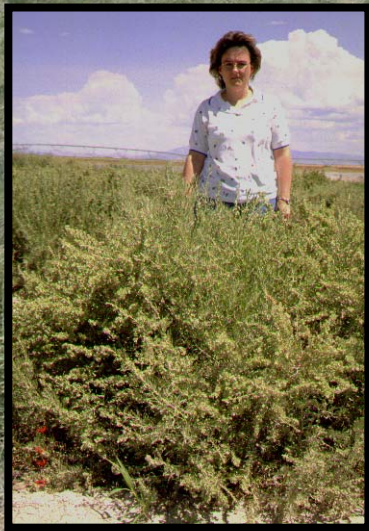
Aberdeen Plant Materials Center - 2007 Activities

Great Basin Native Plant Selection and Increase Project

Loren St. John, Dan Ogle, Derek Tilley



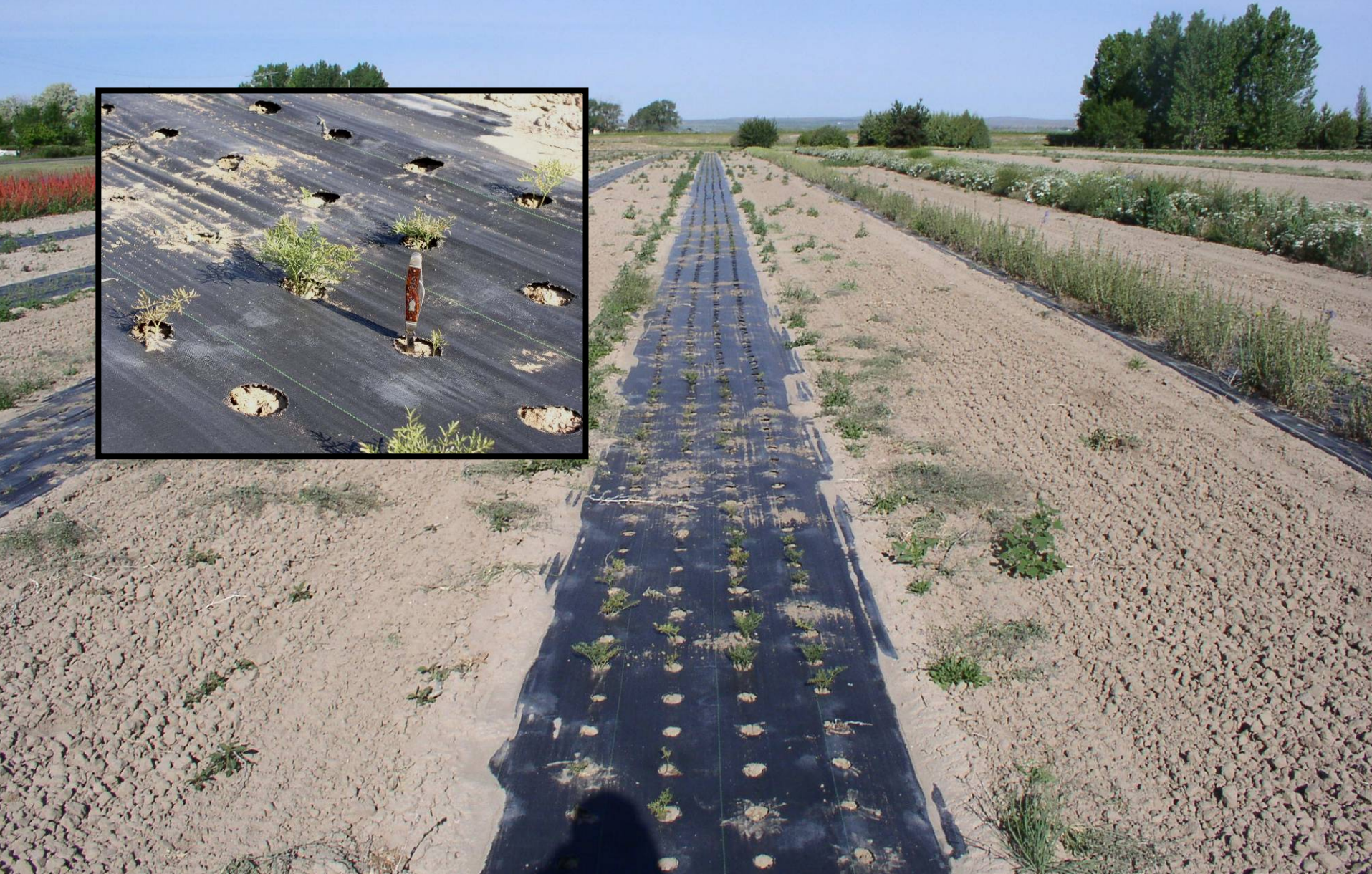
Early Generation Certified Seed Production



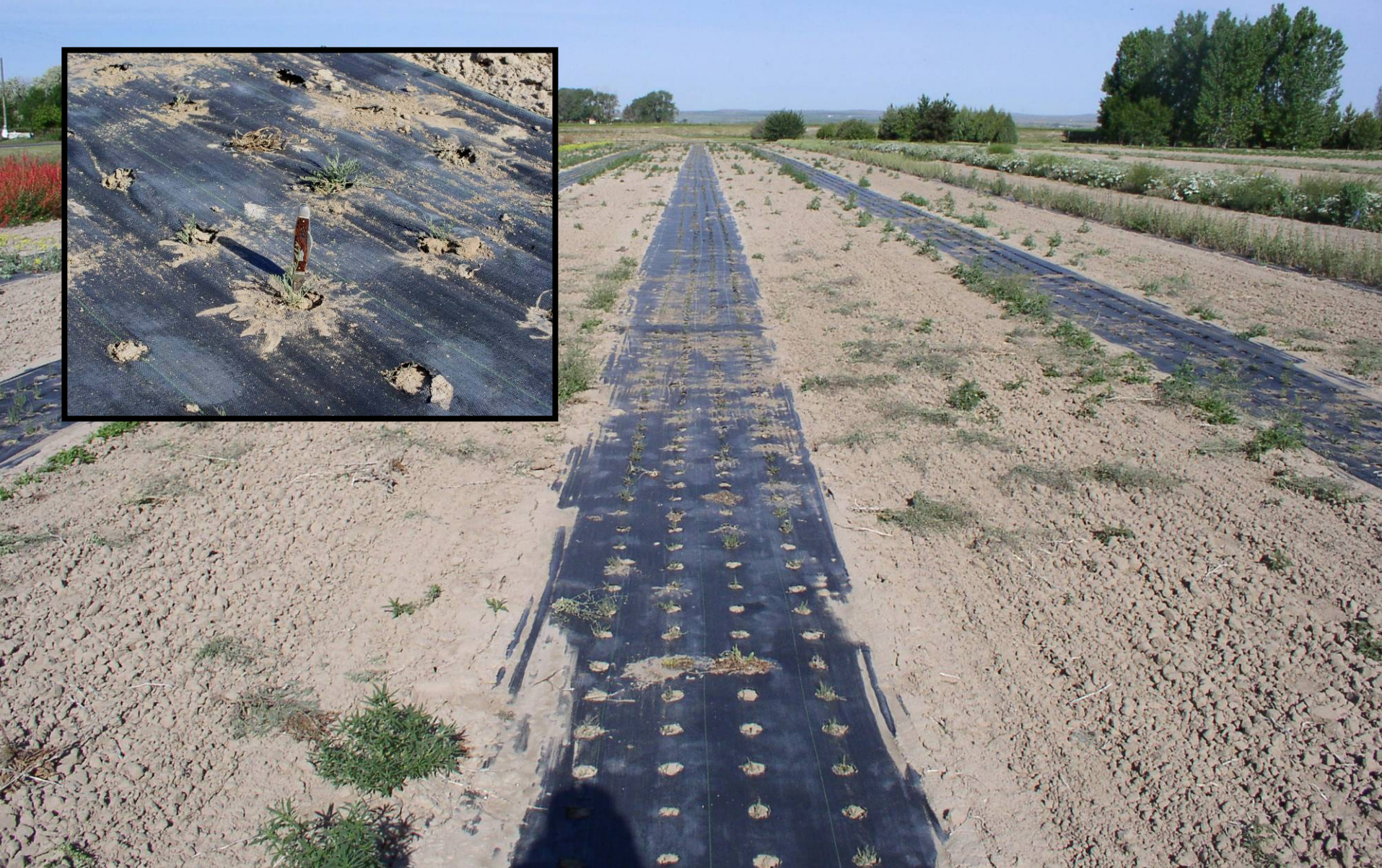
Forb Propagation and Initial Evaluation



Fernleaf biscuitroot

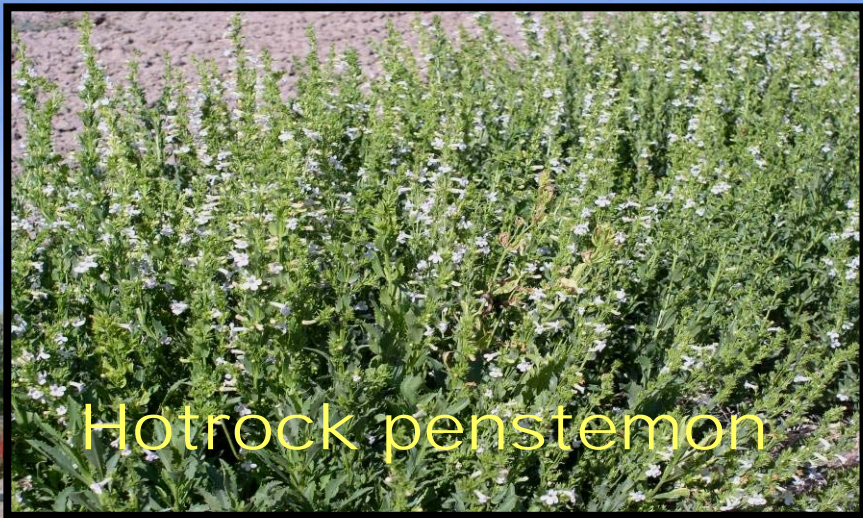


Grays biscuitroot



Nineleaf biscuitroot





Hotrock penstemon



Sharpleaf penstemon



Sagebrush penstemon




Sulphurflower buckwheat



Joint Fire Sciences

Reestablishment of native vegetation after wildfire

- FS Rocky Mountain Research Station
 - BLM
 - USGS
 - Utah Division of Wildlife
 - Aberdeen PMC
- 
- An aerial photograph of a vast, flat landscape that has been severely affected by a wildfire. The foreground and middle ground are covered in dark, charred earth with sparse, small, brownish plants beginning to grow. In the distance, a line of trees and a few vehicles, including a green tractor, are visible on a slightly elevated area. The background shows a clear blue sky and distant, low mountains under a bright sun.



ROUGH RIDER
TRUCK COMPANY, INC.



463472

MANUFACTURED BY
P&F SERVICES INC.
LIMMER, WYOMING
307-677-6455

Orchard Display Nursery

Relative Density/ft²

Fish Creek squirreltail 0.22

Bannock thickspike wheatgrass 0.43

Jim Creek bluebunch wheatgrass 1.07

SERDP Snake River wheatgrass 0.70

Trailhead basin wildrye 0.17

Eagle western yarrow 0.24

Snake River Plains fourwing saltbush 0.02

CALIBRATING THE TRUAX ROUGH RIDER SEED DRILL FOR RESTORATION PLANTINGS

Loren St. John, PMC Team Leader, Aberdeen, Idaho

Brent Cornforth, PMC Farm Manager, Aberdeen, Idaho

Boyd Simonson, PMC Technician, Aberdeen, Idaho

Dan Ogle, Plant Materials Specialist, Boise, Idaho

Derek Tilley, PMC Range Conservationist, Aberdeen, Idaho



Acknowledgments

- Great Basin Restoration Initiative (BLM)
- Rocky Mountain Research Station (USFS)



Loren St. John
PMC Team Leader
Aberdeen Plant Materials Center
P.O. Box 296
Aberdeen, ID 83210
208-397-4133
loren.stjohn@id.usda.gov



The U.S. Department of Agriculture (USDA) prohibits discrimination in all its programs and activities on the basis of race, color, national origin, sex, religion, age, disability, political beliefs, sexual orientation, or marital or family status. (Not all prohibited bases apply to all programs.) Persons with disabilities who require alternative means for communication of program information (Braille, large print, audiotape, etc.) should contact USDA's TARGET Center at (202) 720-2600 (voice and TDD).

To file a complaint of discrimination, write USDA, Director, Office of Civil Rights, Room 326-W, Whitten Building, 1400 Independence Avenue, SW, Washington, D.C. 20250-9410 or call (202) 720-5964 (voice and TDD). USDA is an equal opportunity provider and employer.