



Predispersal seed predation of  
*Wyethia amplexicaule*, *Crepis*  
*acuminata*, and *Agoseris glauca*

R. L. Johnson, V. J. Anderson  
Brigham Young University

# Project History

- 2005
- 2006
- 2007



Idaho –Twin Falls Co. ●

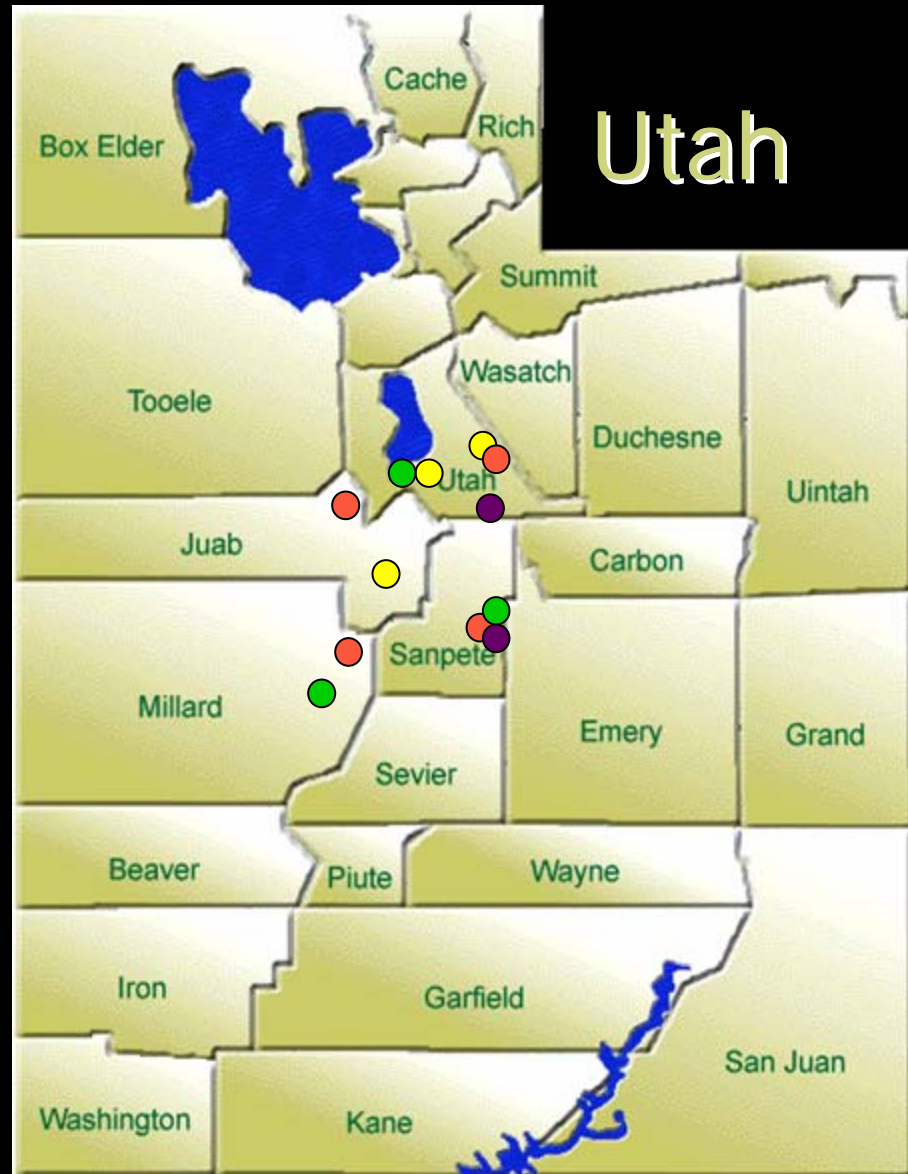
# Study sites

*Crepis* ●

*Agoseris* ●

*Wyethia* ●

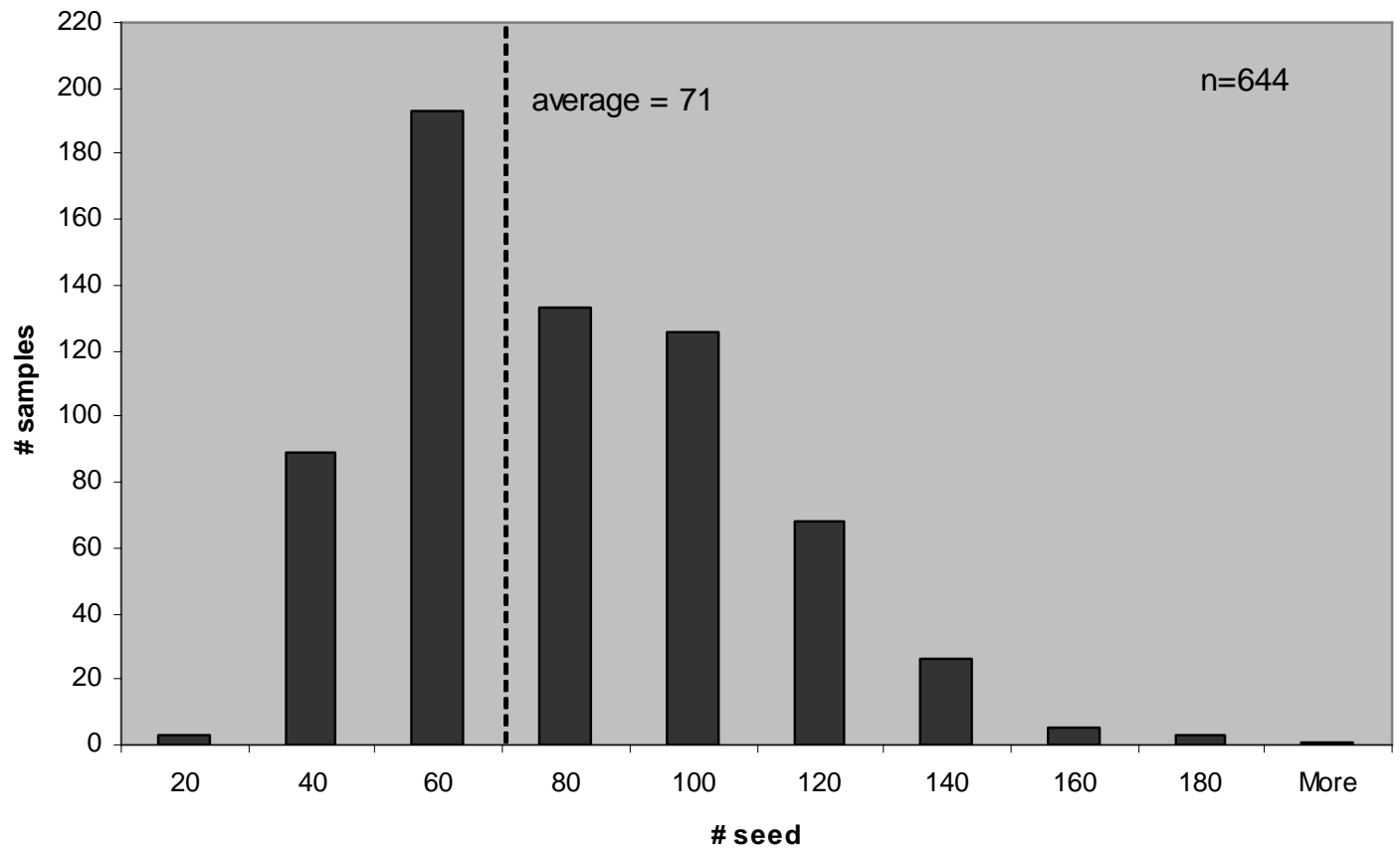
*Balsamorhiza* ●





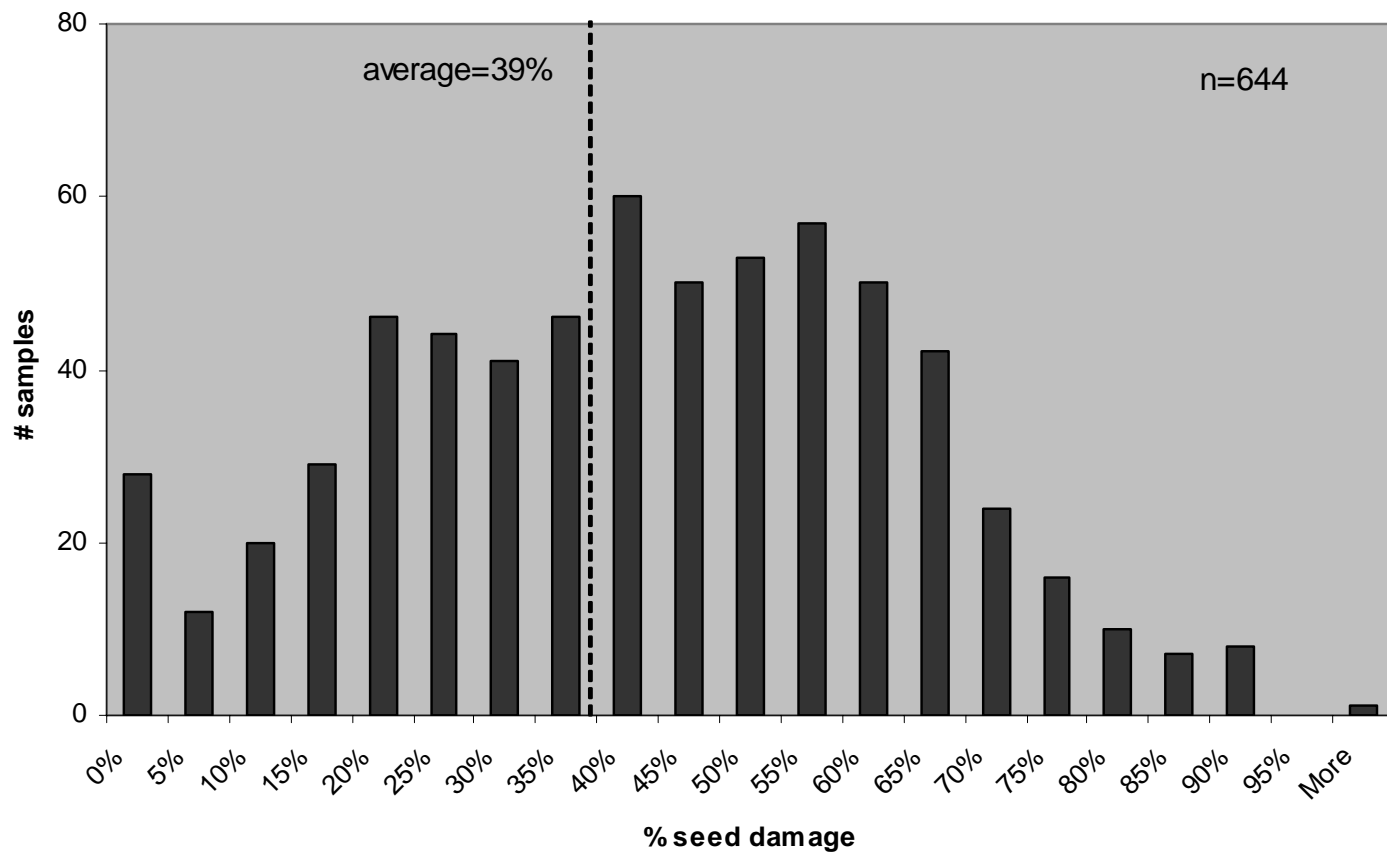


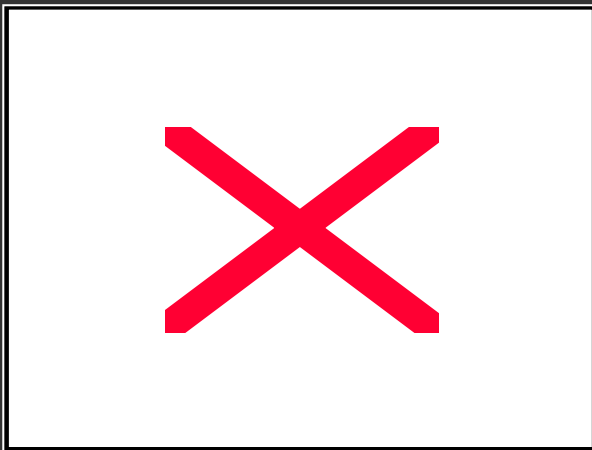
**Histogram: seed/capitulum, *Wyethia amplexicaule***



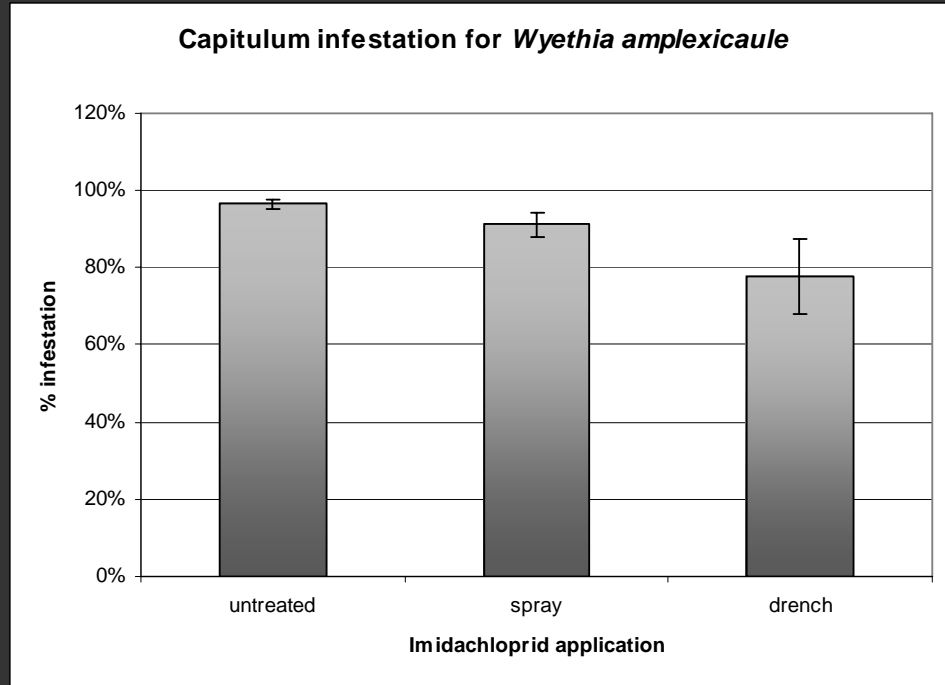
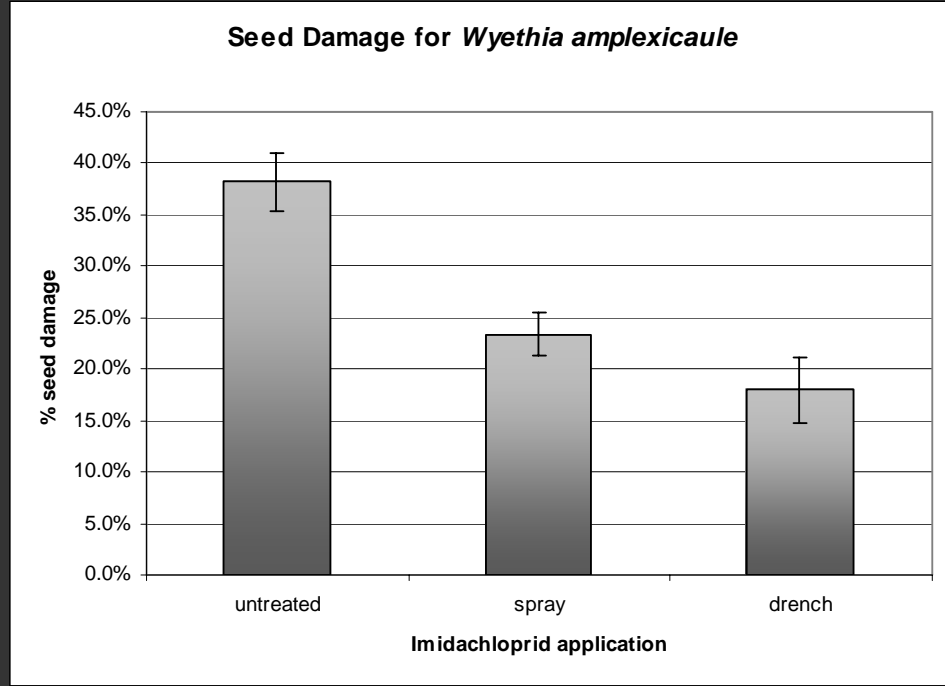


**Histogram: seed damage, *Wyethia amplexicaule***





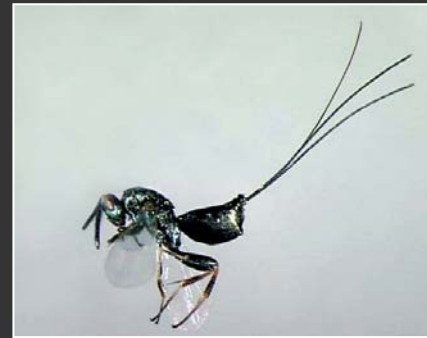
<u>Reared capitula:</u>	666
<i>Neotephritis finalis:</i>	2256
<i>Trupanea nigricornis:</i>	186
Agromyzidae:	15
Lepidoptera:	10
Coleoptera:	14





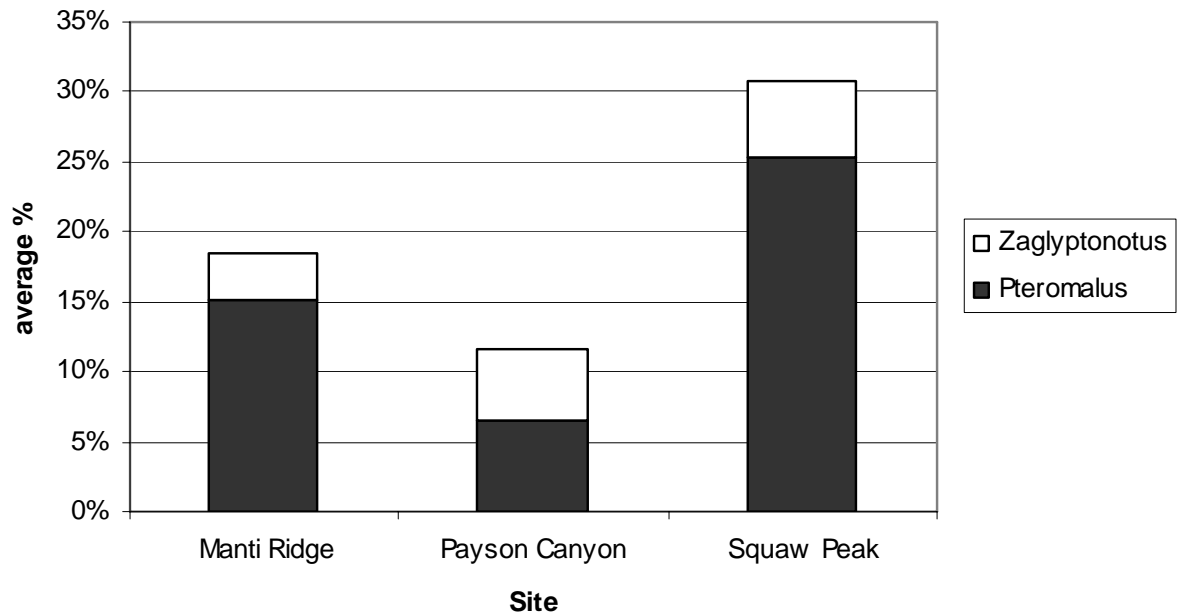


361-*Pteromalus* sp.



86 -*Zaglyptonotus mississippiensis*

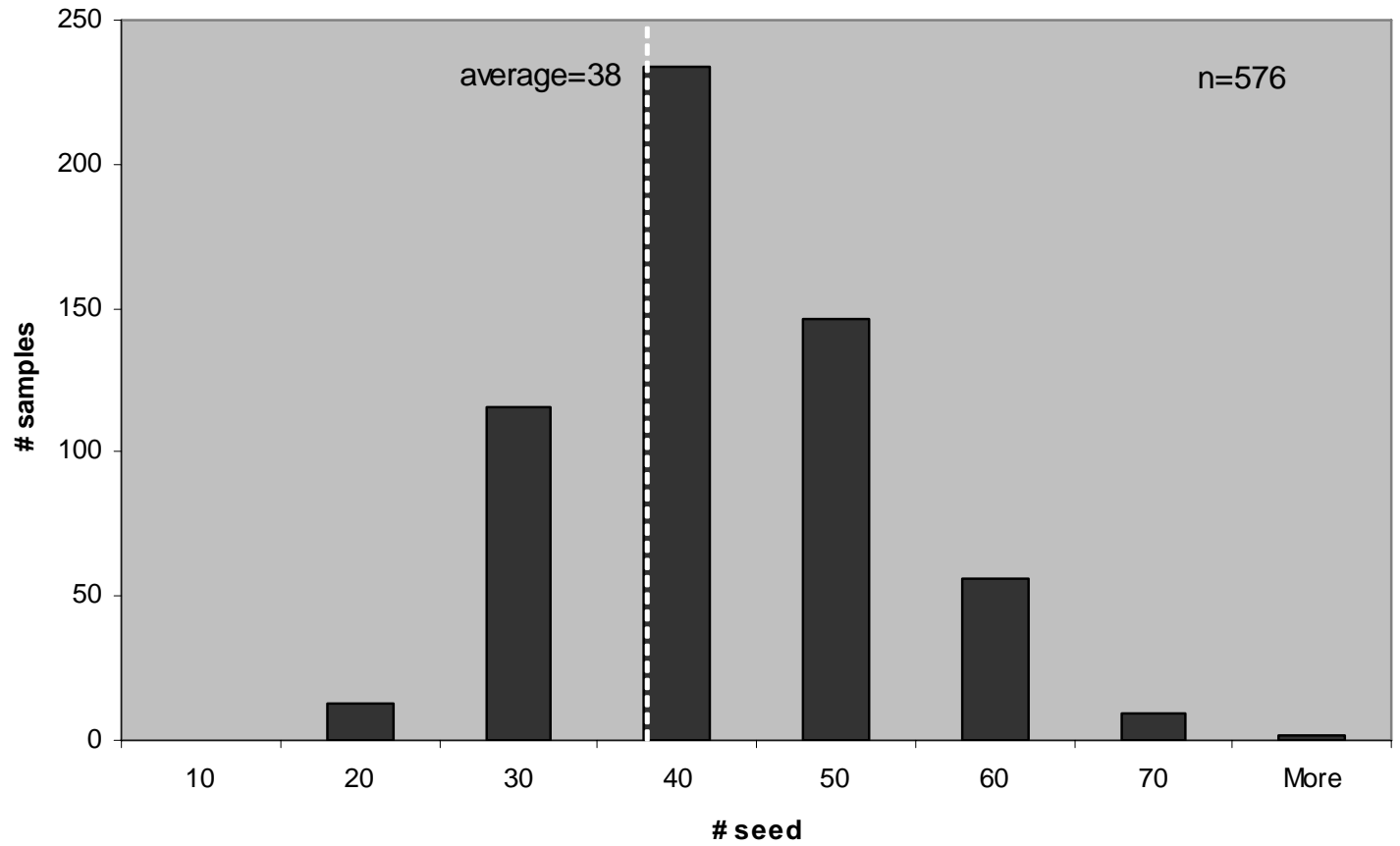
Average % Parasitoidism of *Neotephritis finalis*





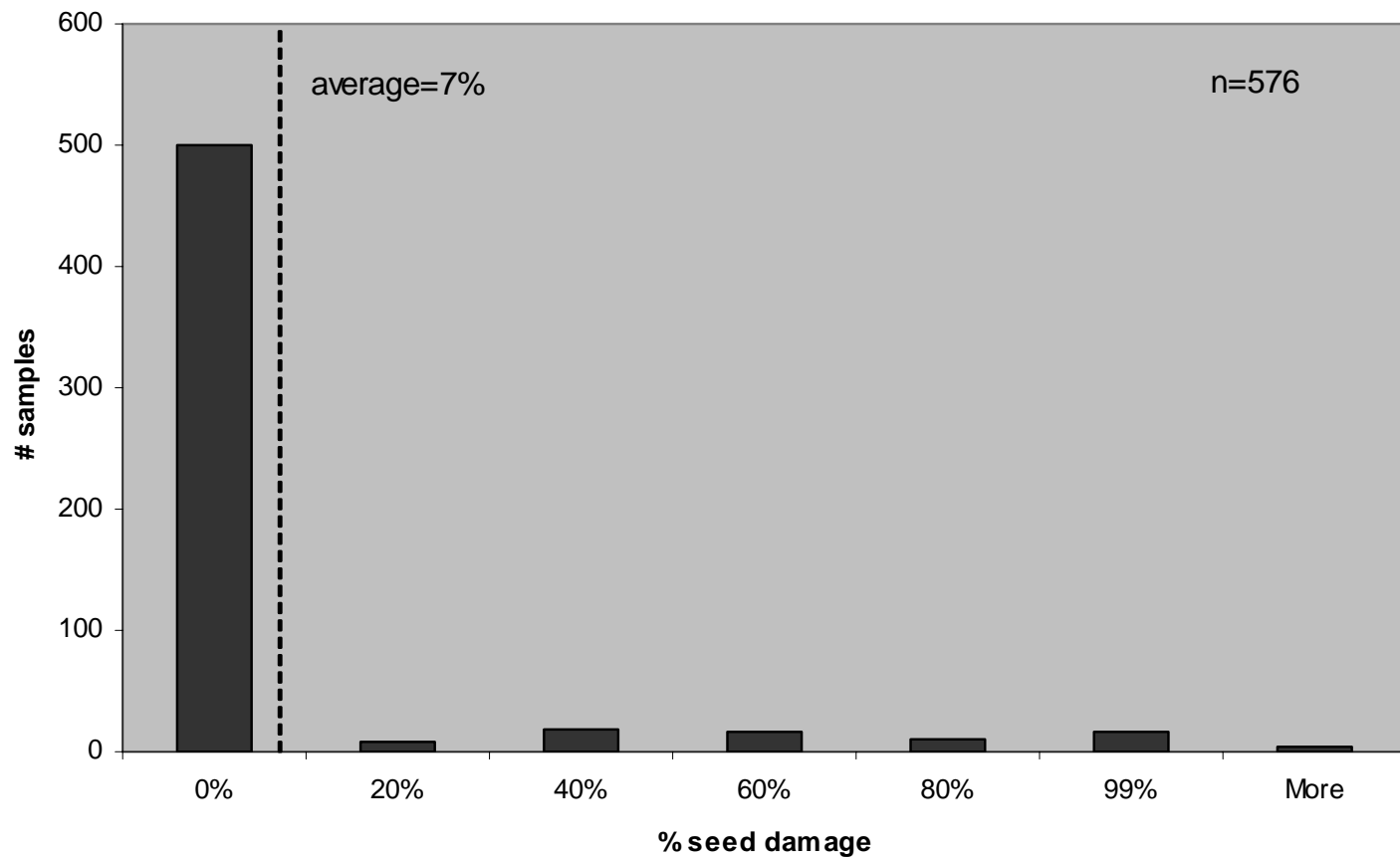


**Histogram: seed/capitulum, *Agoseris glauca***





**Histogram: seed damage, *Agoseris glauca***





Reared capitula: 488

*Paroxyna sp.n.:* 155

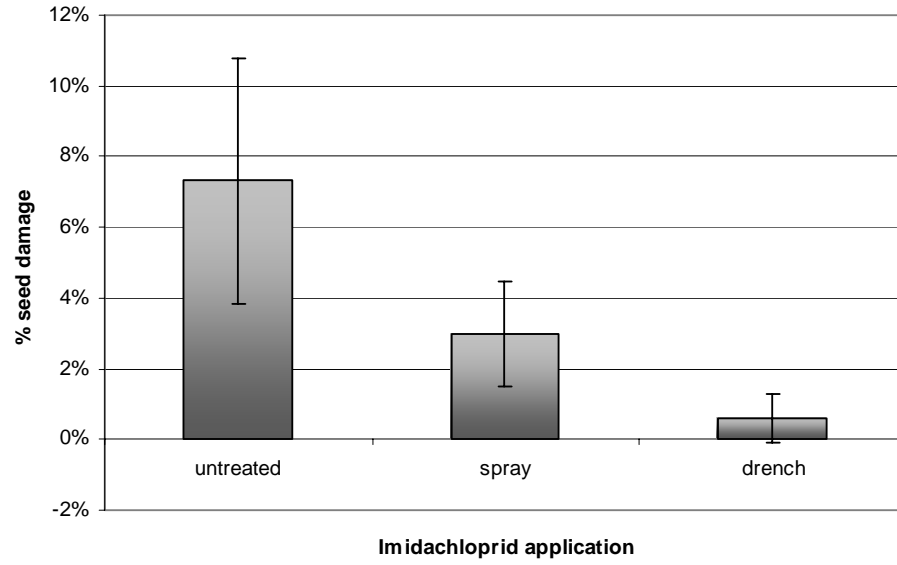
*Diptera (unknown):* 18

\*single site

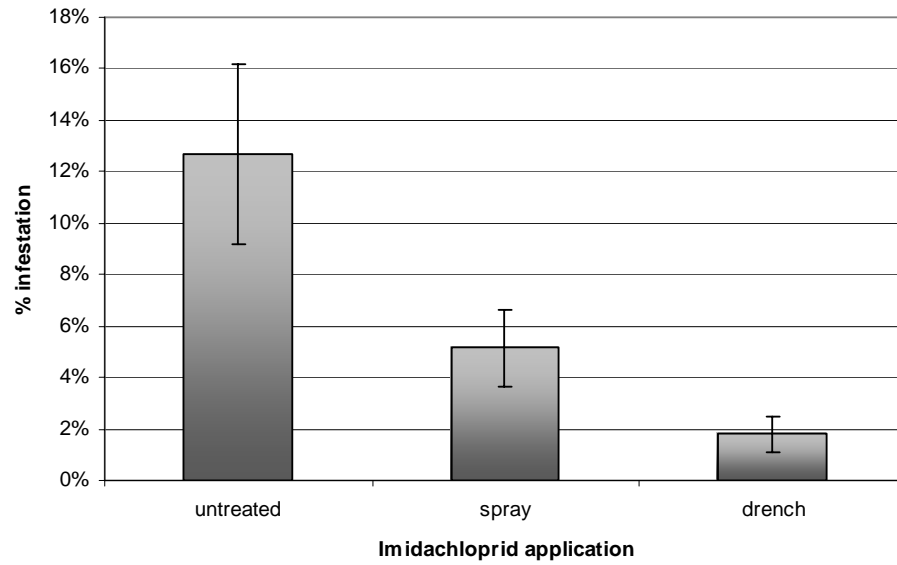




**Seed Damage for *Agoseris glauca***

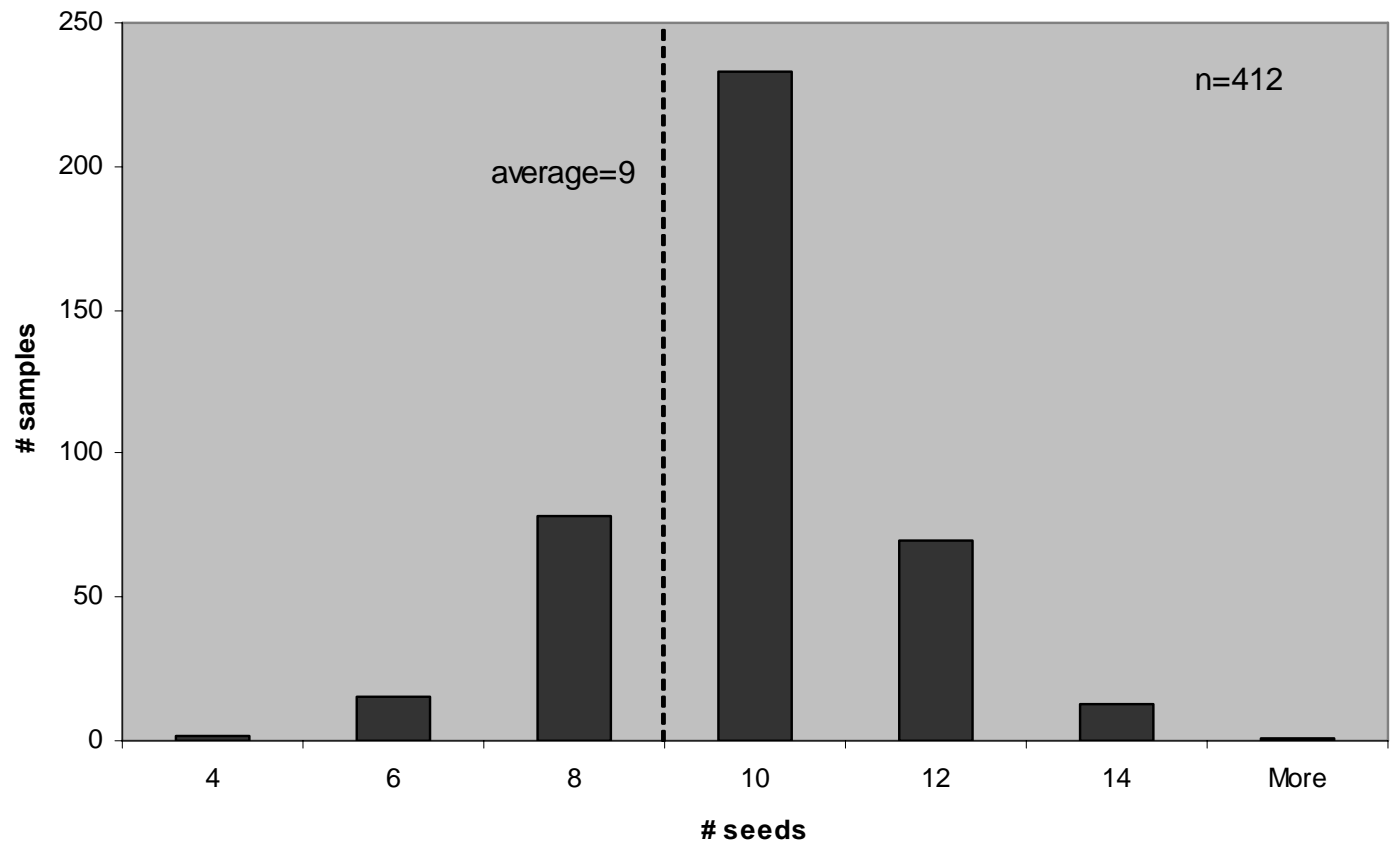


**Capitulum infestation for *Agoseris glauca***



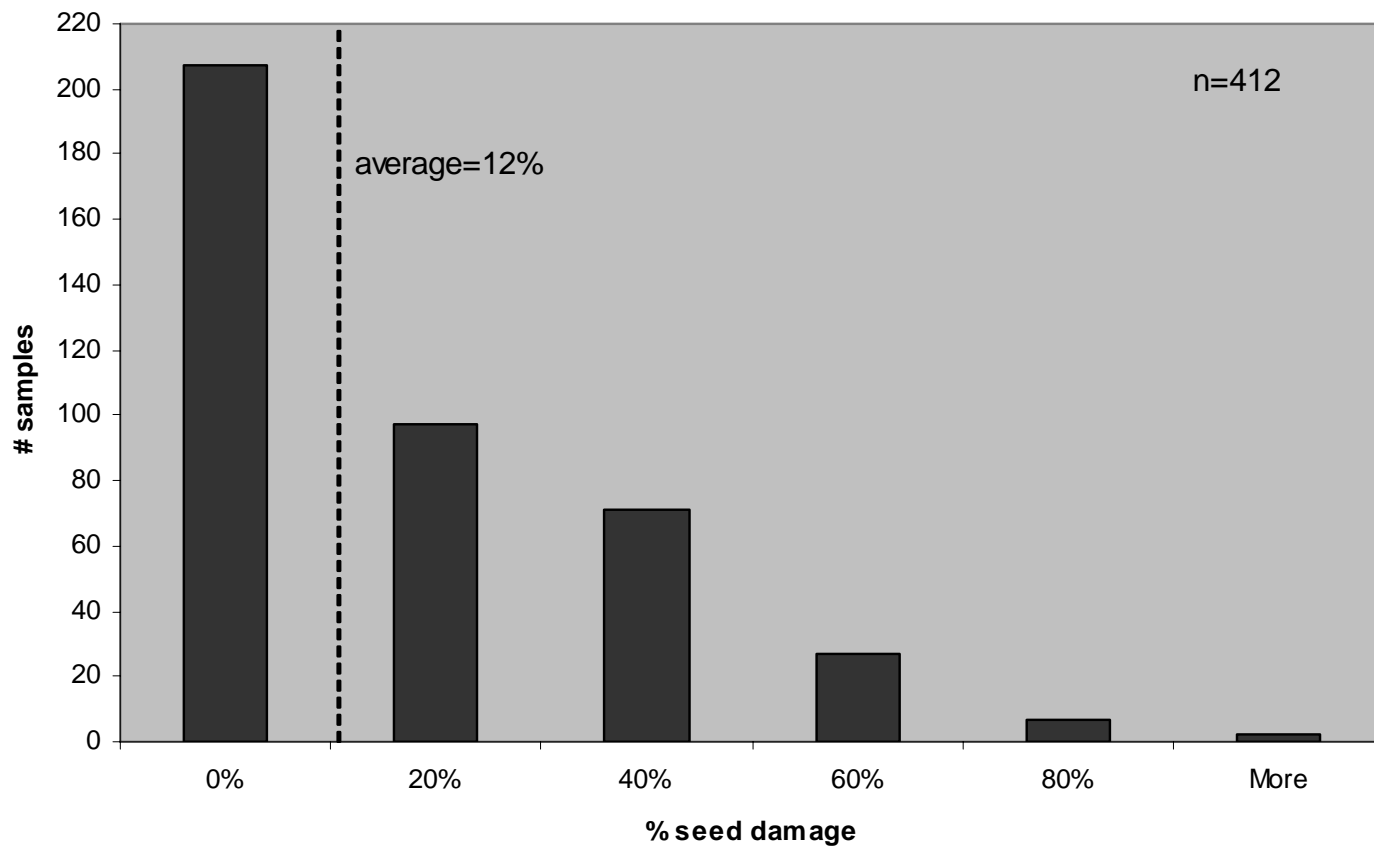


Histogram: seed/capitulum, *Crepis acuminata*





**Histogram: seed damage, *Crepis acuminata***







Reared capitula: 2859

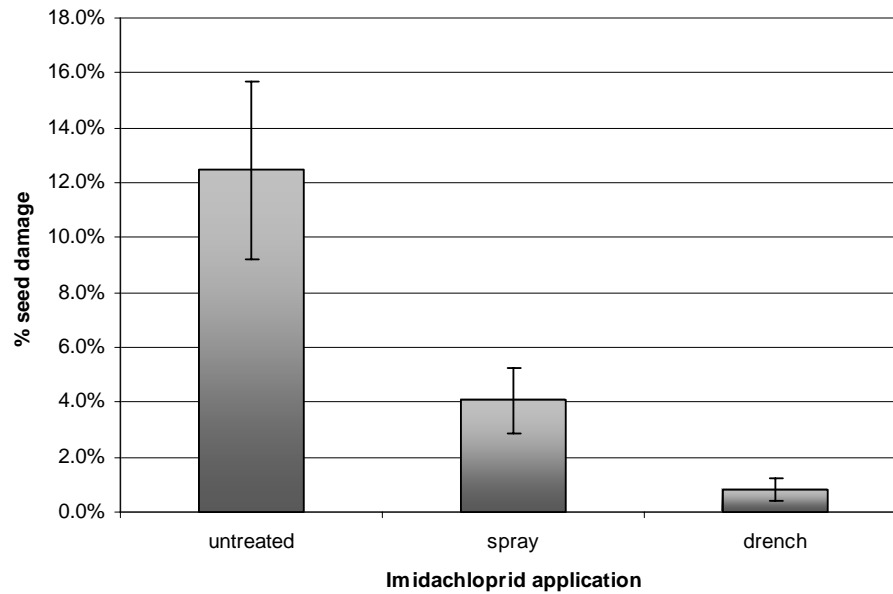
*Paroxyna sp.n.:* 26

*Phycitodes albatella:* 123

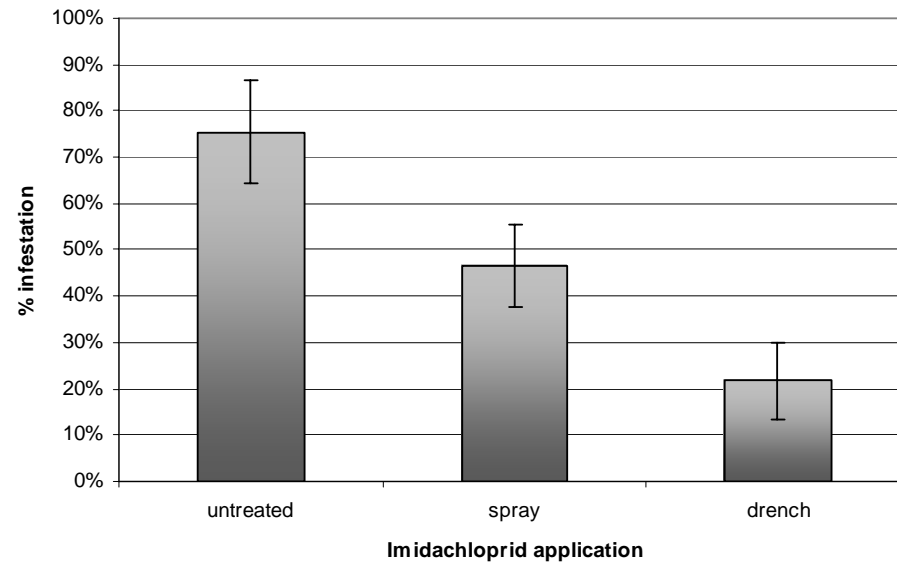




**Seed Damage for *Crepis acuminata***



**Plant infestation for *Crepis acuminata***



# Conclusions

	% seed damage			% yield increase (imidachlopid drench)		
	low	high	average	low	high	average
<i>Wyethia</i>	31%	47%	39%	8%	29%	21%
<i>Agoseris</i>	0%	21%	7%	5%	21%	6%
<i>Crepis</i>	1%	22%	12%	1%	22%	11%



# Seeding Depth

# Competition Analysis