

# Establishing Native Plants in Crested Wheatgrass Stands Using Successional Management



Marie Fansler,  
Agricultural Research  
Oregon Agricultural Research

# Crested Wheatgrass

- Introduced to North America in 1898
  - Used to
    - Stabilize soils
    - Livestock forage
    - Prevent weed invasion
- Currently occupies more than 5 million hectares



# So what's the problem?

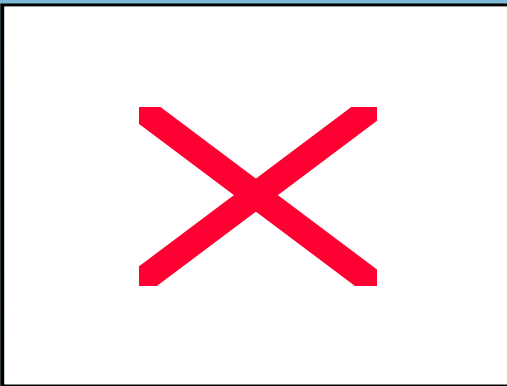
- Once established, crested wheatgrass quickly dominates the seed bank and limits growth of native species
- Without seeding native species, chances for recruitment in crested wheatgrass stands are extremely low
- To re-establish diversity:
  - Deliberate introduction of desired species is required
  - Crested wheatgrass plants and propagules must be destroyed

# Why increase diversity?

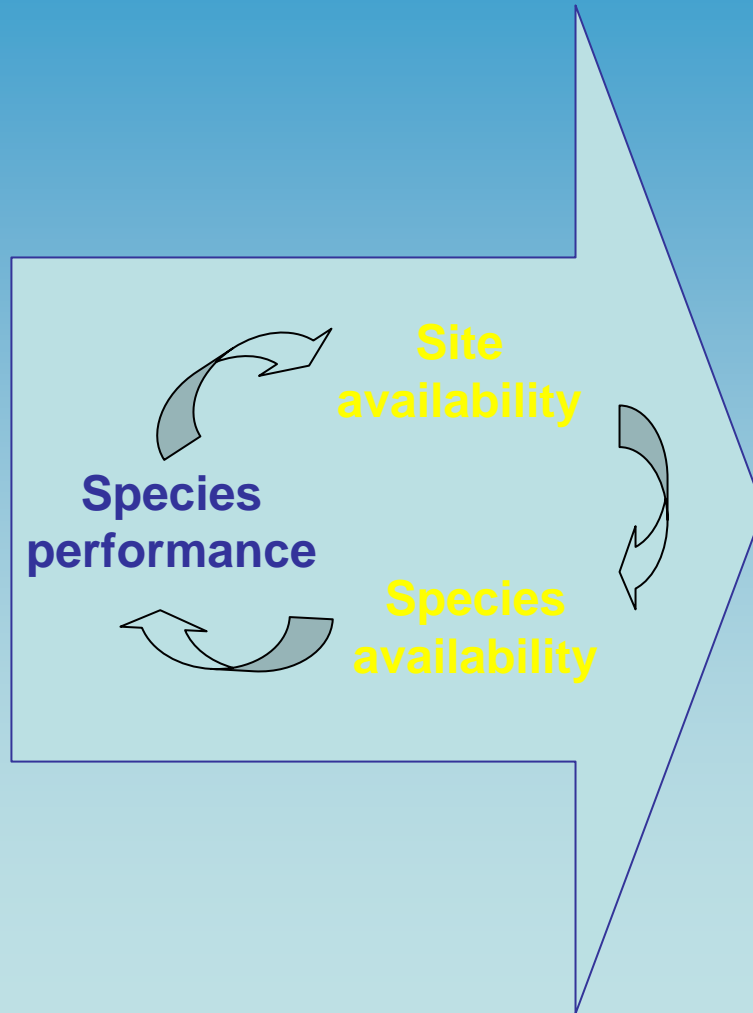
- Improves resource capture and cycling
- Increases resilience and resistance to disturbance
- Provides better wildlife habitat (esp. sagebrush obligate species)
  - Sage-grouse
  - Pygmy rabbit
- More options for livestock grazing



# Successional Management

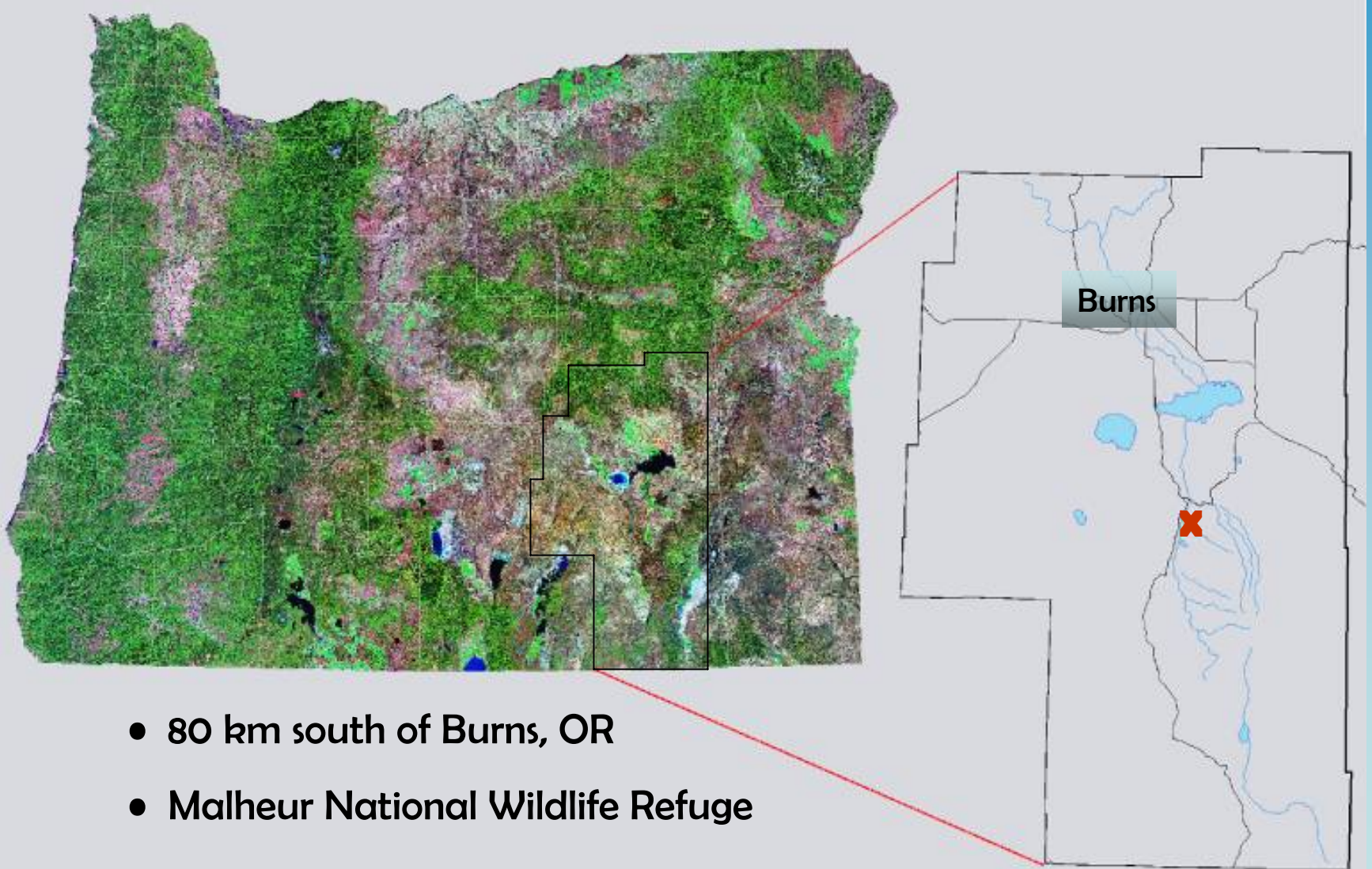


Undesired state



Desired state

# Study Site



- 80 km south of Burns, OR
- Malheur National Wildlife Refuge

6/29/06



6/23/05



# Controlling Crested Wheatgrass (Site Availability)

- **Herbicidal**
  - 1.2 L ha<sup>-1</sup> (10 oz ac<sup>-1</sup>) glyphosate (partial control--PCH)
  - 4.8 L ha<sup>-1</sup> (44 oz ac<sup>-1</sup>) glyphosate (full control--FCH)
- **Mechanical**
  - One pass with disk (partial control--PCM)
  - Two passes with disk (full control--FCM)
- **Undisturbed (UD)**





# Introducing Native Species (Species Availability)

- Seeded plots Oct. 31-Nov. 1, 2005 and 2006, with Truax Rough Rider no-till drill



# Native Seed Mix

- 4 grasses
  - bluebunch wheatgrass
  - Sandberg's bluegrass
  - Indian ricegrass
  - squirreltail
- 3 forbs
  - western yarrow
  - Lewis flax
  - Munro globemallow
- 3 shrubs
  - Wyoming big sagebrush
  - four-wing saltbush
  - white-stemmed rabbitbrush



# Procedures

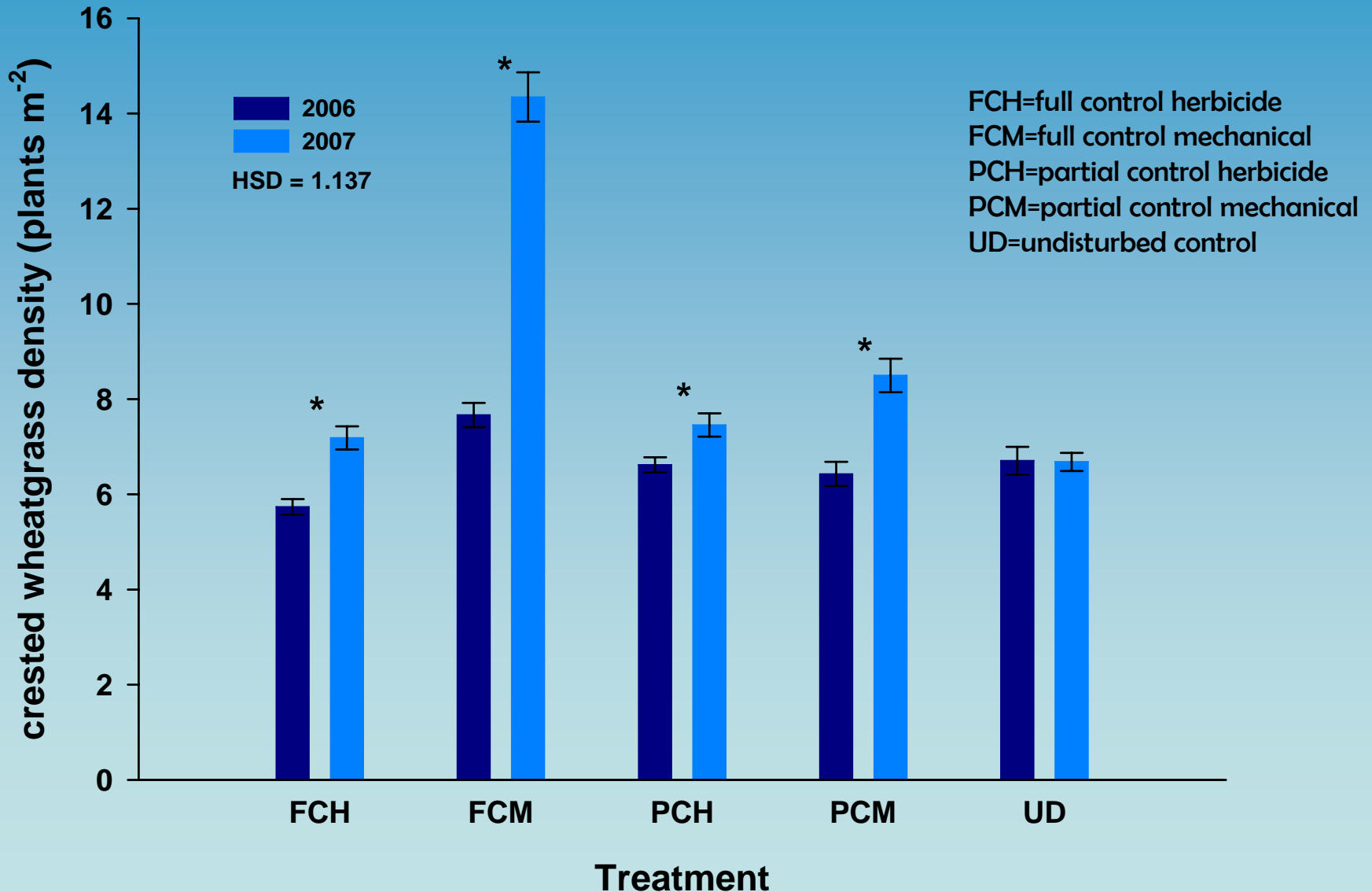
- Treated/seeded set of plots in 2005
  - Sampled 2006 and 2007
- Treated/seeded set of plots in 2006
  - Sampled 2007



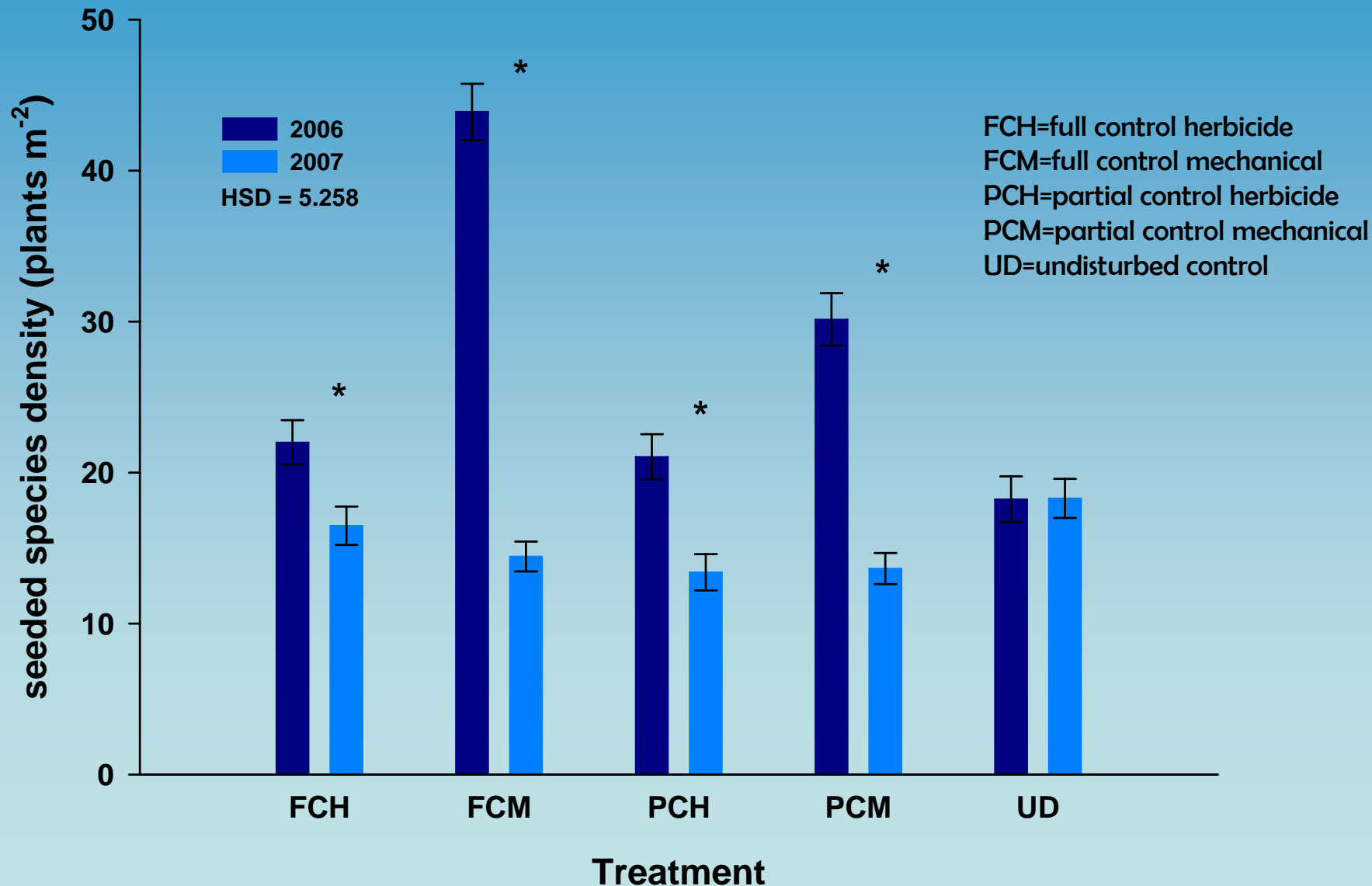
# Results

A photograph of a dry, rocky landscape. The ground is sandy and brown, with scattered dark rocks. Sparse vegetation includes thin, dry grasses and small green plants. A large, weathered, light-colored log or branch lies horizontally across the upper right portion of the frame. The word "Results" is overlaid in white, bold, sans-serif font in the center of the image.

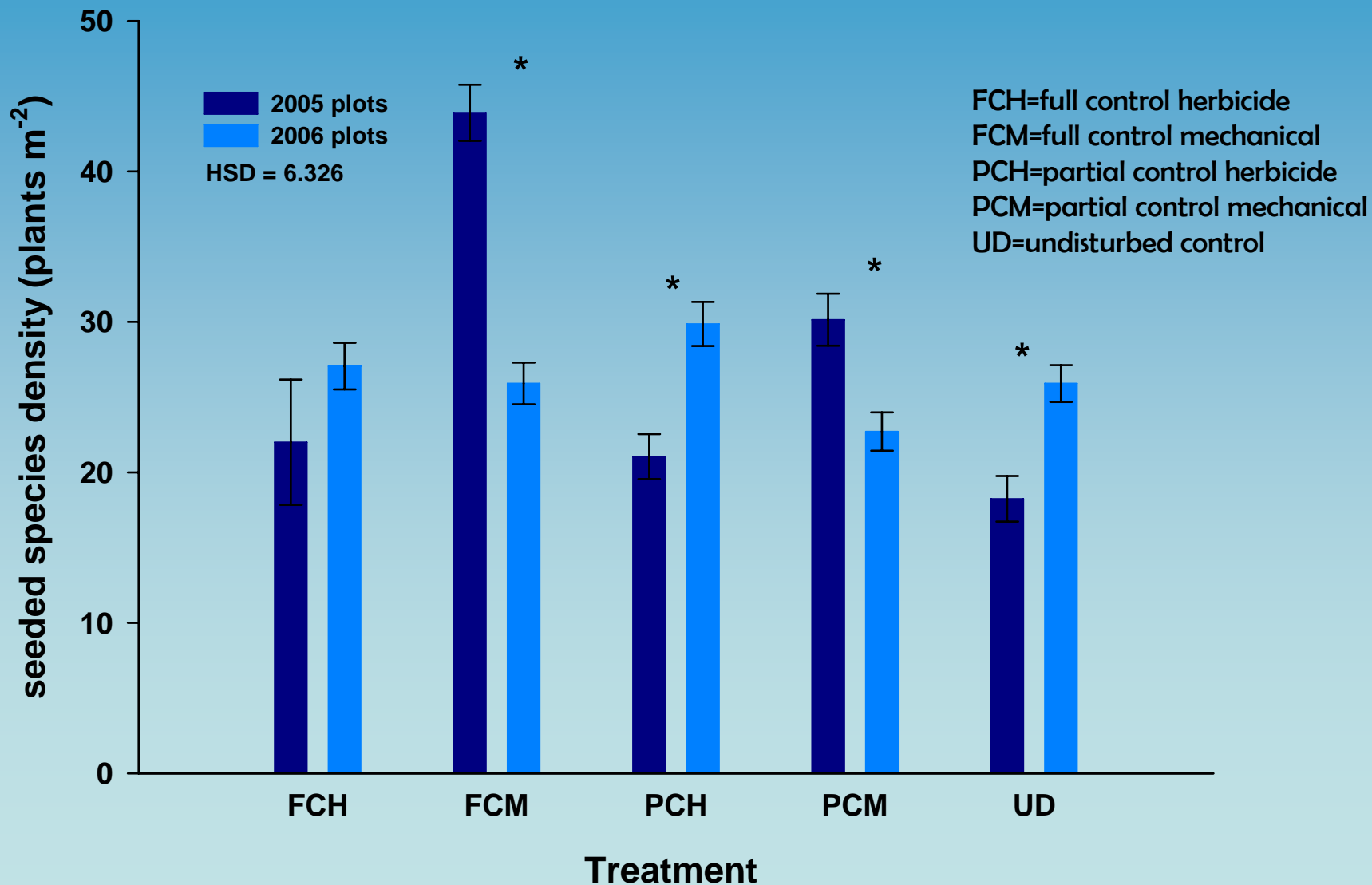
# Crested Wheatgrass Density--2005 Plots Compared across Two Growing Years



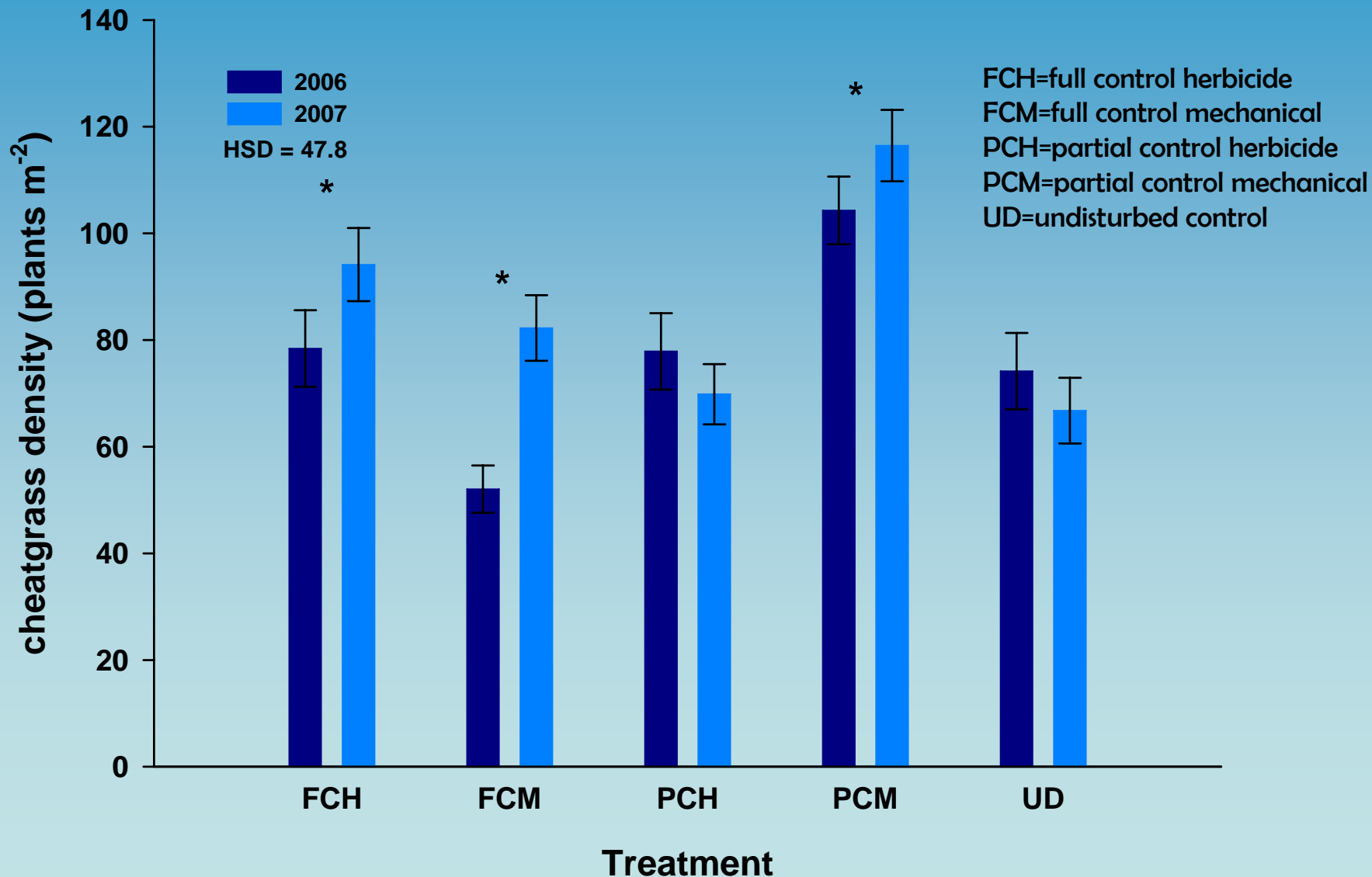
# Seeded Species Density--2005 Plots Compared across Two Growing Years



# Seeded Species Density--2005 and 2006 Plots Compared across Growing Year



# Cheatgrass Density—2005 Plots Compared across Two Growing Years





# Summary of Results

- **Crested wheatgrass**
  - ↑ 2006 to 2007 except in UD (6-8 plants  $m^{-2}$ )
  - mechanical control resulted in the highest densities
  - higher density in 2006 plots (~10 plants  $m^{-2}$ ) than 2005 plots; disturbance treatments ineffective
- **Seeded species**
  - ↓ 2006 to 2007 except in UD
  - disturbance treatments initially increased seeded species density compared to UD, but after 2 growing years all treatments resulted in similar densities (15-18 plants  $m^{-2}$ )
  - no difference in treatments in 2006 plots (~26 plants  $m^{-2}$ )
- **Cheatgrass**
  - ↑ 2006 to 2007 except in PCH and UD
  - by 2007 PCM resulted in higher density than UD; all other treatments similar to UD
  - lower density in 2006 plots (~29 plants  $m^{-2}$ ) compared to 2005 plots (~77 plants  $m^{-2}$ )

- Establishing natives in crested wheatgrass is possible
- Site availability appeared adequate (~20% BG)
- Depleted seed bank--Must address species availability!!
- Potential increase in cheatgrass



“assisted succession” (Cox and Anderson 2004)

# Cooperators

- **USDA-Agricultural Research Service**
- **USDA-FS-Rocky Mountain Research Station**
- **USFWS-Malheur National Wildlife Refuge**
- **USDA-NRCS**
- **GBNPSIP**

# Questions/Comments

