



# TRAFFIC VOLUME TRENDS

Washington, D. C.

March 1964

MARCH (PRELIMINARY) FEBRUARY (REVISED), 1964 COMPARED TO 1963

Table 1.—Summary by Road Class and by Region

	Preliminary data for March 1964			Revised data for February 1964		
	Vehicle-miles (millions)		Percentage change	Vehicle-miles (millions)		Percentage change
	1963	1964		1963	1964	
Class of road--All States:						
Main rural roads.....	24,186	25,556	+5.7	20,355	21,718	+6.7
Local rural roads.....	.....	.....	+5.5	.....	.....	+5.9
All rural roads.....	.....	.....	+5.6	.....	.....	+6.5
City streets.....	.....	.....	+5.2	.....	.....	+4.7
All roads and streets.....	.....	.....	+5.4	.....	.....	+5.6
By region, 48 States (main rural only):						
Eastern region.....	9,190	9,693	+5.5	7,637	8,116	+6.3
Central region.....	11,138	11,825	+6.2	9,411	10,141	+7.8
Western region.....	3,772	3,948	+4.7	3,227	3,374	+4.6
Total.....	24,100	25,466	+5.7	20,275	21,631	+6.7

Table 2.—Changes on Main Rural Roads by States

Division and state	March (preliminary)		February (revised)		Division and state	March (preliminary)		February (revised)	
	Number of stations <sup>1</sup>	Percentage change	Number of stations <sup>1</sup>	Percentage change		Number of stations <sup>1</sup>	Percentage change	Number of stations <sup>1</sup>	Percentage change
<b>NEW ENGLAND:</b>					<b>EAST SOUTH CENTRAL:</b>				
Connecticut.....	15	+9.3	15	+3.4	Alabama.....	27	+5.0	27	+7.4
Maine.....	14	+5.2	15	+8.3	Kentucky.....	18	+7.8	17	+10.0
Massachusetts.....	10	+3.9	9	+2.1	Mississippi.....	43	+6.4	41	+8.2
New Hampshire.....	53	+7.6	48	+11.8	Tennessee.....	23	+7.0	23	+8.1
Rhode Island.....	5	+5.7	5	+2.9					
Vermont.....	6	+12.7	30	+10.9	<b>WEST NORTH CENTRAL:</b>				
<b>MIDDLE ATLANTIC:</b>					Iowa.....	26	+3.5	25	+7.6
New Jersey.....	5	+4.8	9	+7.5	Kansas.....	65	+0.8	67	+1.0
New York.....	19	+4.8	17	+7.0	Minnesota.....	30	+8.7	30	+13.7
Pennsylvania.....	54	+6.8	51	+7.6	Missouri.....	21	+2.5	20	+8.1
<b>SOUTH ATLANTIC</b>					Nebraska.....	16	+2.7	16	+4.7
(North):					North Dakota.....	36	+2.1	36	+11.4
Delaware.....	7	+4.9	7	+5.5	South Dakota.....	29	+0.4	28	+6.1
Maryland.....	30	+5.7	29	+4.6	<b>WEST SOUTH CENTRAL:</b>				
Virginia.....	.....	+2.6	.....	+2.8	Arkansas.....	30	+4.9	26	+6.8
West Virginia.....	21	+6.2	24	+8.7	Louisiana.....	36	+6.4	37	+6.1
<b>SOUTH ATLANTIC</b>					Oklahoma.....	21	+4.2	20	+3.7
(South):					Texas.....	.....	.....	.....	.....
Florida.....	53	+0.6	55	+3.9	<b>MOUNTAIN:</b>				
Georgia.....	23	+7.2	25	+5.6	Arizona.....	10	-3.4	8	+8.6
North Carolina.....	43	+6.8	42	+7.2	Colorado.....	24	+8.0	24	+0.5
South Carolina.....	10	+7.2	11	+9.0	Idaho.....	.....	.....	23	-0.6
<b>EAST NORTH CENTRAL:</b>					Montana.....	19	-4.8	20	+1.6
Illinois.....	.....	.....	.....	.....	Nevada.....	22	+8.6	22	-1.7
Indiana.....	22	+10.5	23	+8.8	New Mexico.....	.....	+2.4	.....	-3.8
Michigan.....	41	+10.2	40	+11.7	Utah.....	37	+4.2	38	+2.4
Ohio.....	23	+5.4	19	+6.0	Wyoming.....	28	+1.4	28	-1.2
Wisconsin.....	35	+8.5	34	+13.7	<b>PACIFIC:</b>				
Alaska.....	.....	.....	5	+13.8	California.....	.....	.....	.....	.....
Hawaii.....	.....	.....	.....	.....	Oregon.....	83	+4.9	78	+7.7
					Washington.....	10	+4.4	10	+7.8

<sup>1</sup>Rural mileage of each major toll route is considered as one station. Where the number of stations is not shown, the States prepared traffic estimates, generally based on extensive traffic sampling surveys.

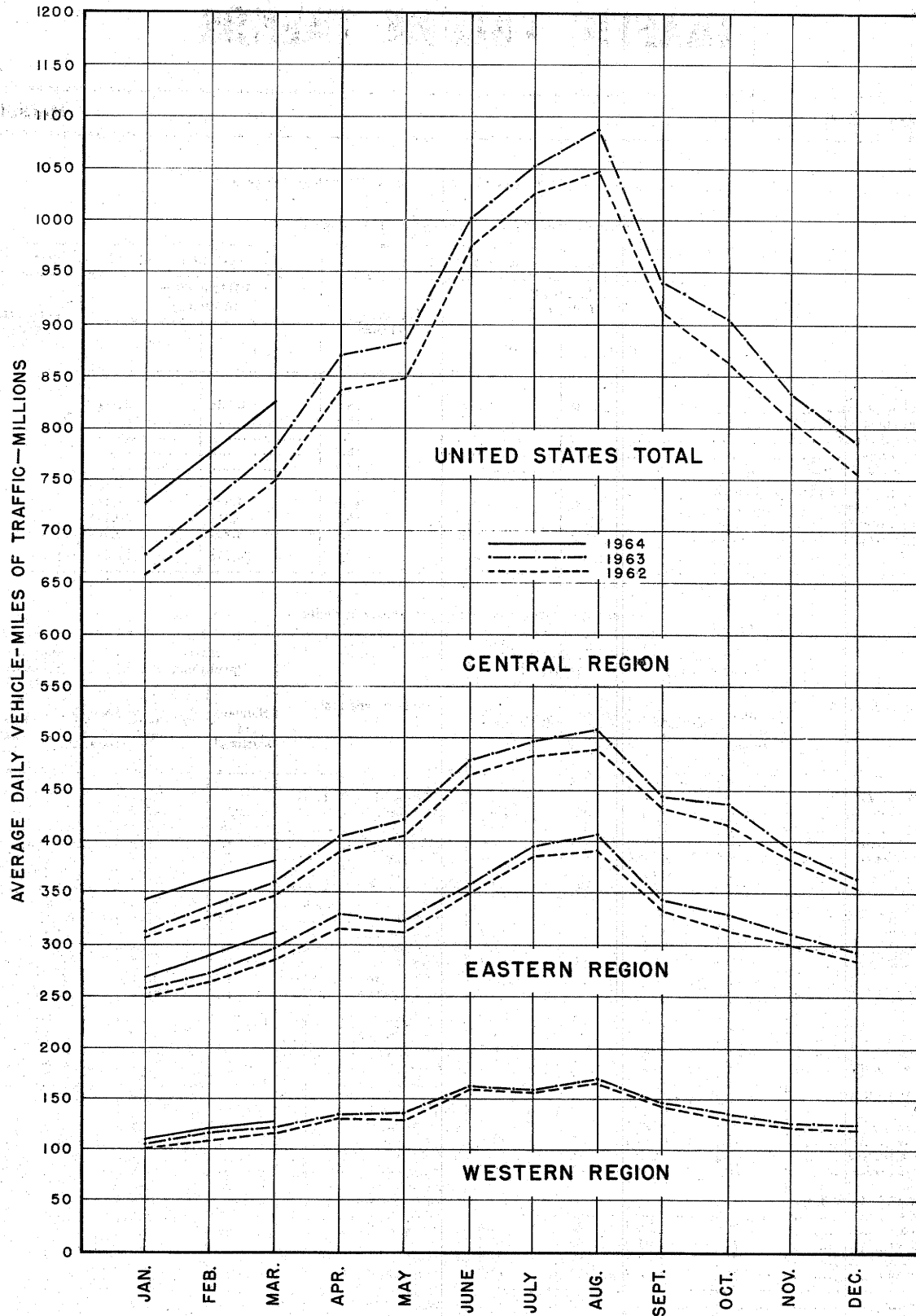


FIGURE 1--TRAVEL ON MAIN RURAL ROADS, BY MONTHS

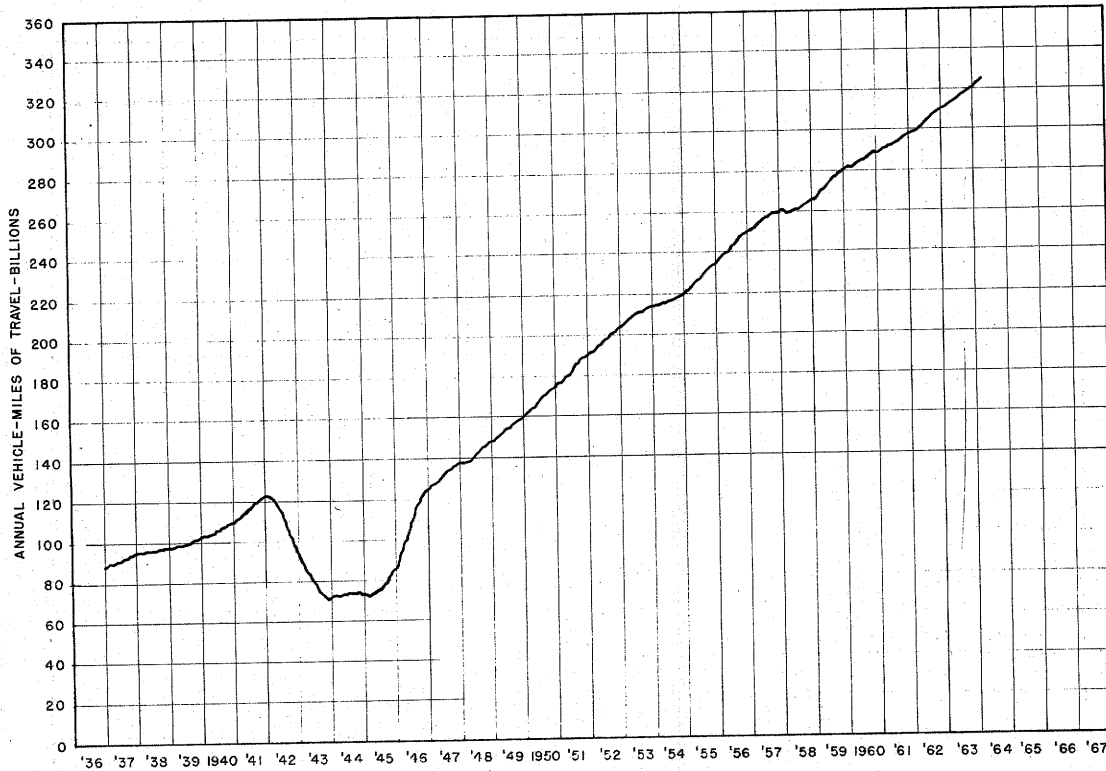


FIGURE 2--TRAVEL ON MAIN RURAL ROADS BY 12-MONTH PERIODS ENDING EACH MONTH, IN VEHICLE-MILES

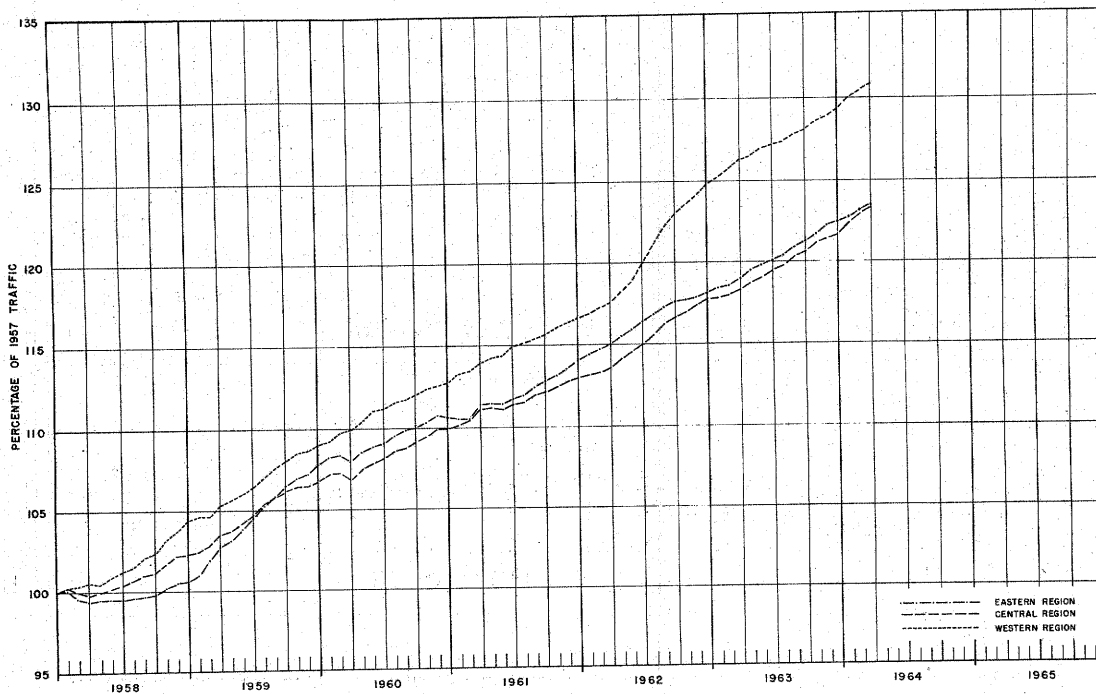
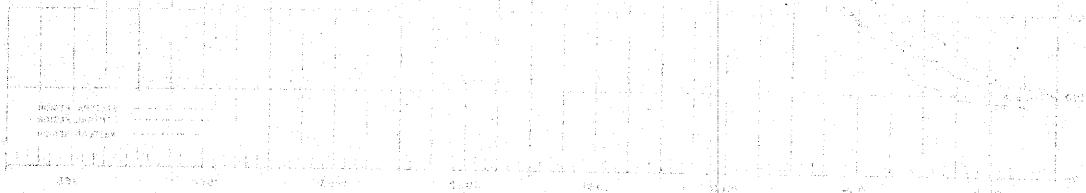


FIGURE 3--TRAVEL ON MAIN RURAL ROADS BY 12-MONTH PERIODS ENDING EACH MONTH, AS PERCENTAGE OF TRAFFIC IN THE CALENDAR YEAR 1957



REPAIRS TO BE MADE IN THE FOLLOWING MANNER:  
 BY THE REPAIRS WHICH HAVE BEEN MADE