

*Ditchcock  
Carpenter*

PUBLIC ROADS ADMINISTRATION  
FEDERAL WORKS AGENCY  
Washington 25, D. C.

TRAFFIC VOLUME TRENDS  
AUGUST 1948

On the basis of preliminary figures, motor vehicle travel on main and local roads for the country as a whole was higher during August 1948 than in any previous August.

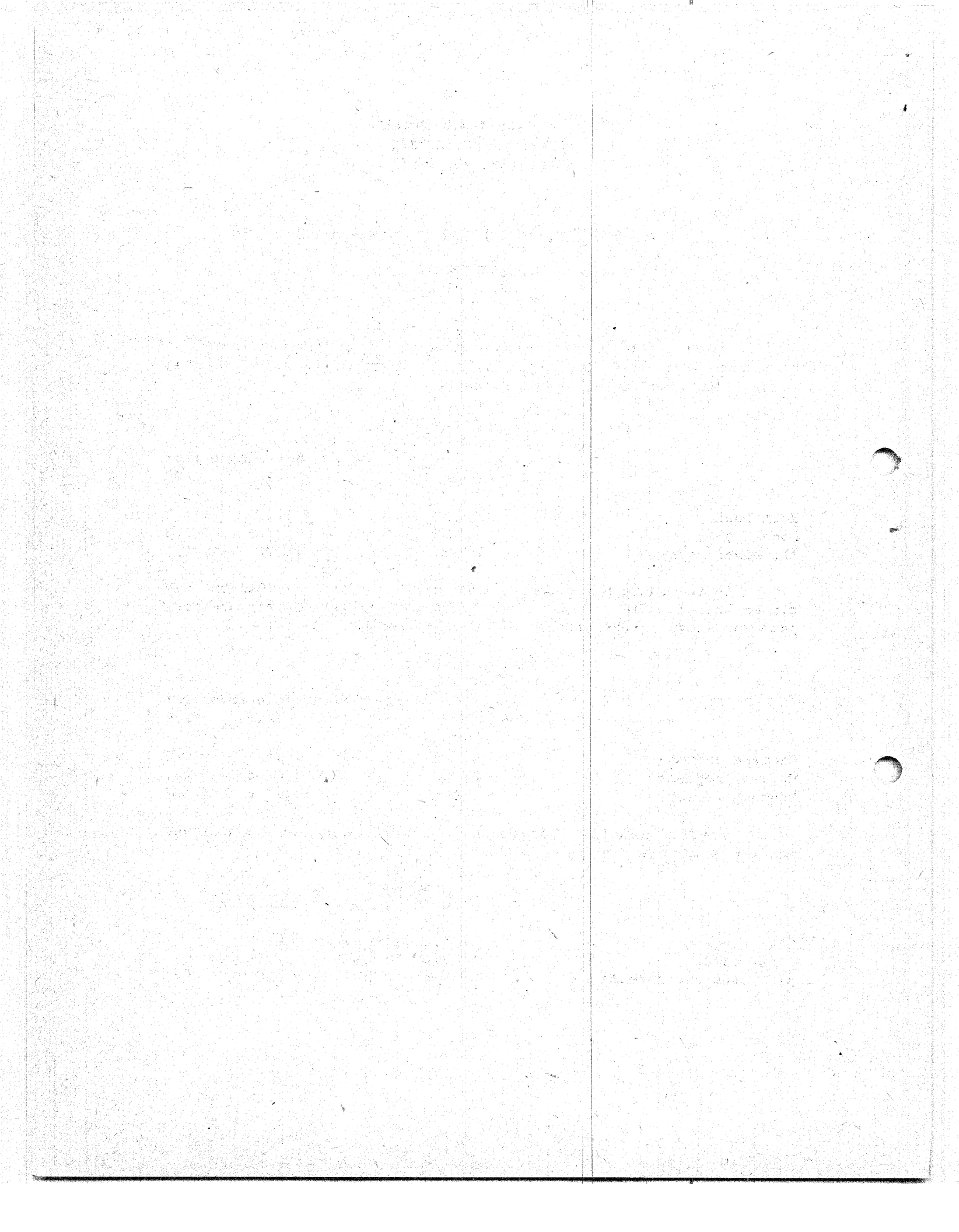
	Rural traffic in vehicle-miles		Percentage change from		
	August 1948 (millions)		1941	1943	1947
Main roads	14,670	✓	+13.3	+114.7	+ 4.8
Local roads	4,830		+ 5.8	+ 73.3	+ 1.8
All rural roads	19,500		+11.3	+102.7	+ 4.0

In the eastern regions, travel was lower than in 1941 but was higher than in 1947. On the other hand, an increase over any previous year was shown in the central and western regions.

	Rural traffic in vehicle-miles		Percentage change from		
	August 1948 (millions)		1941	1943	1947
Eastern regions	5,709	}	- 9.5	+ 92.1	+ 0.8
Central regions	10,140	}	+19.1	+105.5	+ 6.0
Western regions	3,651	}	+35.9	+112.4	+ 3.8

Traffic on city streets and on rural roads as a whole was heavier than in any previous August.

	Percentage change from		
	1941	1943	1947
City streets	+ 5.3	+ 75.6	+ 6.0
Rural roads	+11.3	+102.7	+ 4.0
All roads and streets	+ 8.4	+ 88.8	+ 5.0



Comparisons of August 1948 travel in several cities with that of August 1947 are as follows:

2 stations in Akron, Ohio	- 5.6
1 station in Augusta, Maine	+ 5.8
1 station in Cheyenne, Wyoming	+21.1
6 stations in Chicago, Illinois	+ 1.0
3 stations in Columbus, Ohio	+ 1.8
1 station in Concord, New Hampshire	+ 7.6
1 station in Dayton, Ohio	-14.2
1 station in Denver, Colorado	- 1.5
3 stations in Detroit, Michigan	+33.6
10 stations in Washington, D. C.	+ 3.3
1 station in Fort Morgan, Colorado	+21.8
1 station in Harpers Ferry, West Virginia	- 5.9
1 station in Loveland, Colorado	- 1.3
9 stations in Milwaukee, Wisconsin	+ 1.7
7 stations in St. Louis, Missouri	+18.0
1 station in Salt Lake City, Utah	+20.5
1 station in Santa Fe, New Mexico	+ 6.3
6 urban toll facilities	+ 1.9

H. S. Fairbank, Deputy Commissioner  
Public Roads Administration

Attachments

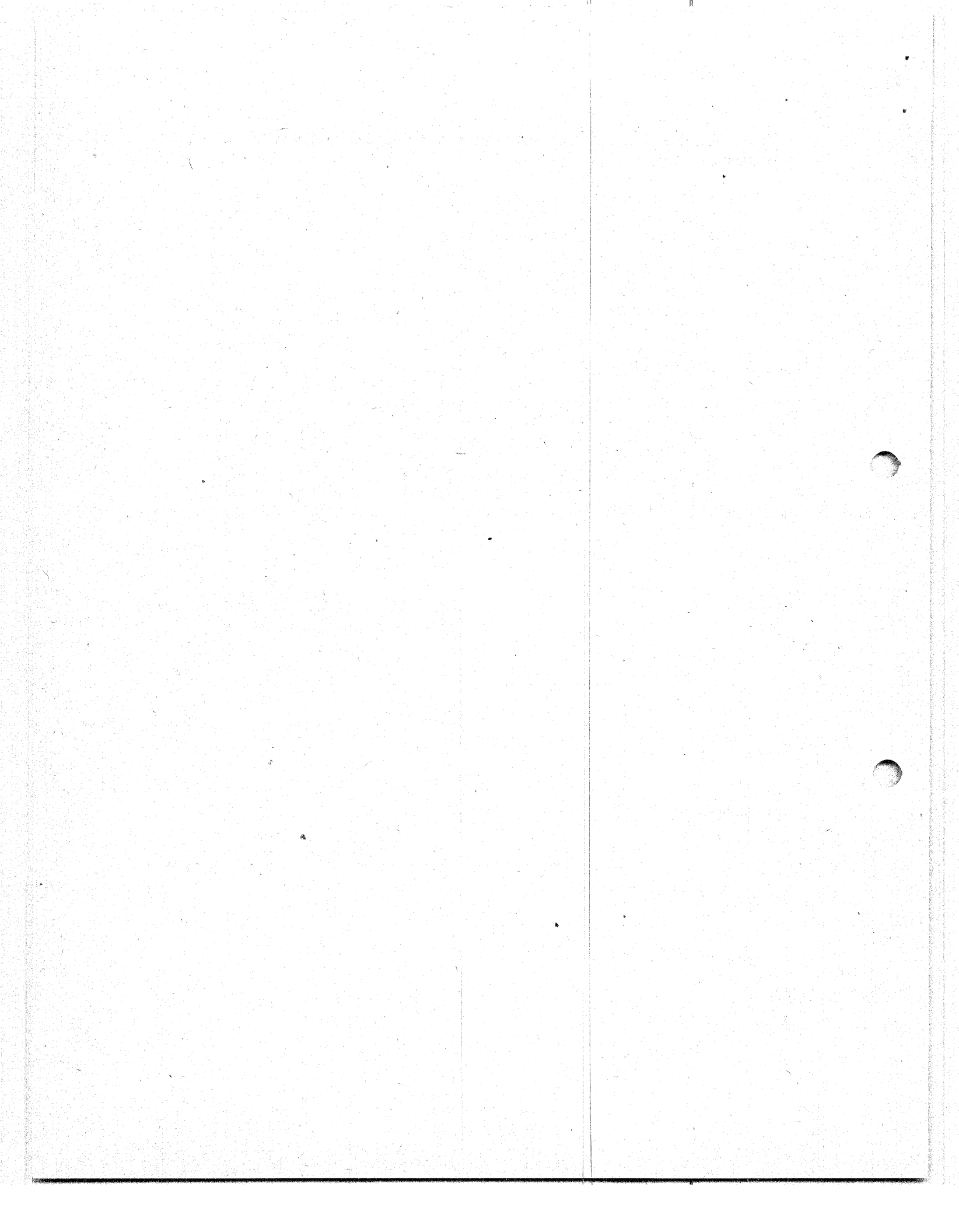
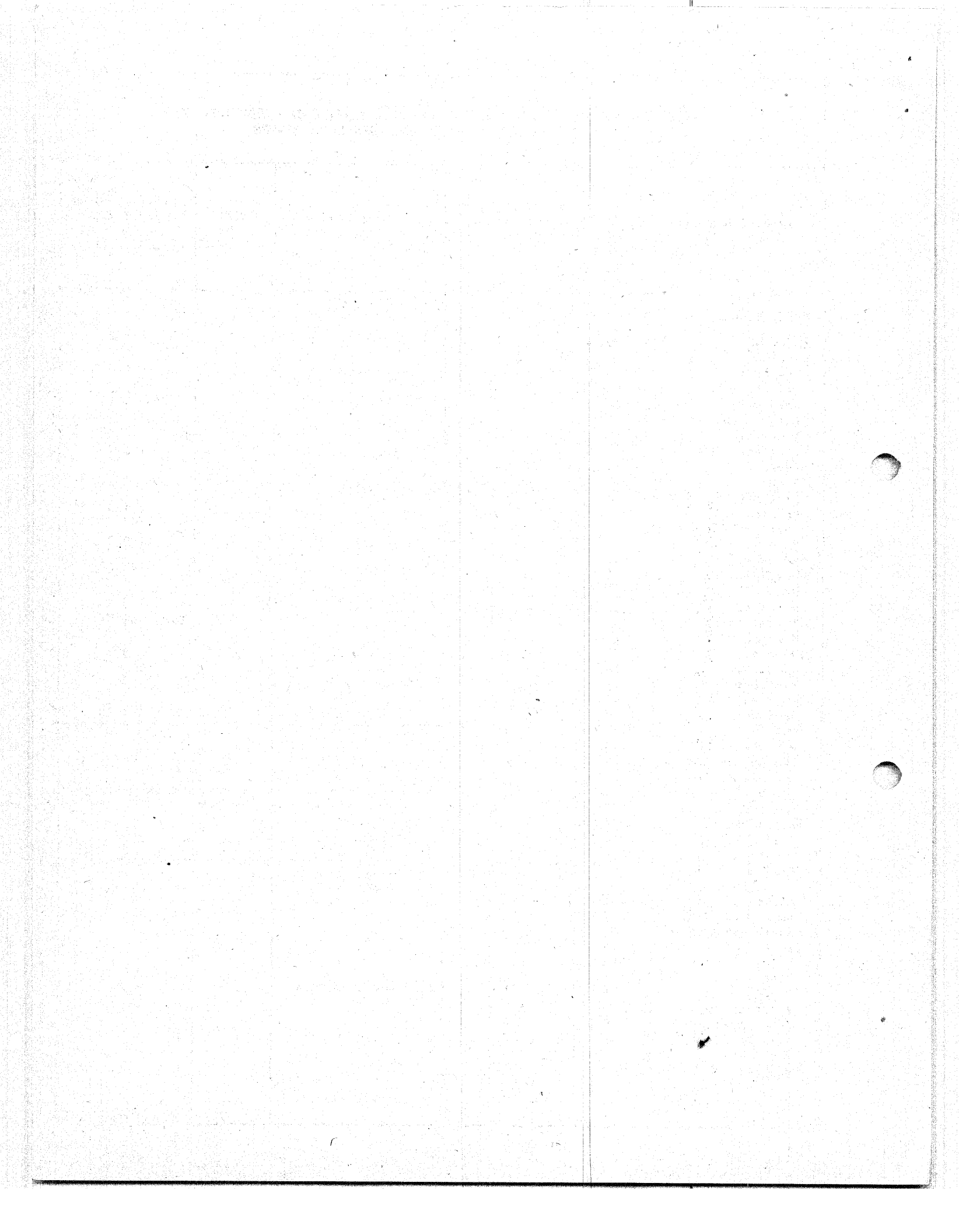


TABLE 1.--PRELIMINARY SUMMARY OF AUTOMATIC TRAFFIC RECORDER DATA FOR  
AUGUST 1948 INCLUDING 625 STATIONS IN 44 STATES

Type of highway and State	Number of stations	Traffic volume percentage change from August 1947	Type of highway and State	Number of stations	Traffic volume/percentage change from August 1947
<i>STATE HIGHWAYS</i>			<i>LOCAL HIGHWAYS</i>		
Alabama	6	+ 2.0	Alabama	1	+ 4.8
Arizona	5	+15.3	Connecticut	3	+ 4.8
Arkansas	20	+ 4.4	Delaware	2	-33.9
California	8	+ 2.7	Georgia	3	+10.2
Colorado	16	+ 7.4	Indiana	1	+16.5
Connecticut	16	+ 4.2	Maryland	1	- 0.8
Delaware	4	- 1.1	Michigan	2	+ 7.6
Florida	----	-----	Montana	2	+ 9.2
Georgia	7	+ 1.8	Nebraska	1	-30.0
Idaho	8	+ 7.2	North Dakota	2	-18.5
Illinois	5	+13.4	Ohio	2	+24.3
Indiana	21	+12.4	Oregon	1	+ 2.7
Iowa	----	-----	Rhode Island	1	-11.3
Kansas	13	+ 8.9	Wisconsin	1	+31.9
Kentucky	12	+ 8.8			
Louisiana	8	+15.8	<i>TOTAL - 14 STATES</i>	23	+ 1.8
Maine	9	+ 5.8			
Maryland	17	+ 8.4	<i>ALL HIGHWAYS</i>		
Massachusetts	8	+ 6.6	<i>44 STATES</i>	625	+ 4.0
Michigan	26	+ 3.5			
Minnesota	25	+ 3.5	<i>3 EASTERN REGIONS</i>	156	+ 0.8
Mississippi	10	+ 4.2			
Missouri	25	+ 3.8	<i>4 CENTRAL REGIONS</i>	354	+ 6.0
Montana	12	+ 5.1			
Nebraska	9	+ 5.3	<i>2 WESTERN REGIONS</i>	115	+ 3.8
Nevada	16	+ 6.1			
New Hampshire	12	+ 1.9			
New Jersey	3	+13.5			
New Mexico	16	+ 9.9			
New York	----	-----			
North Carolina	20	+ 1.0			
North Dakota	10	+19.2			
Ohio	19	- 0.9			
Oklahoma	20	+ 7.5			
Oregon	4	-10.3			
Pennsylvania	28	- 4.0			
Rhode Island	1	+40.5			
South Carolina	5	- 6.0			
South Dakota	10	+12.6			
Tennessee	14	+ 9.9			
Texas	82	+10.0			
Utah	11	+ 8.9			
Vermont	5	+ 5.3			
Virginia	----	-----			
Washington	10	+ 3.1			
West Virginia	11	+12.8			
Wisconsin	9	+13.0			
Wyoming	6	+12.8			
<i>TOTAL - 44 STATES</i>	602	+ 4.8			









**TABLE 3.--NUMBER OF VEHICLES, CLASSIFIED BY TYPES, USING TOLL FACILITIES  
IN AUGUST 1948 COMPARED WITH THOSE IN AUGUST 1947**

Facilities	1948			Percentage change from 1947		
	Total	Passenger cars <sup>1</sup>	Trucks and busses	Total	Passenger cars <sup>1</sup>	Trucks and busses
<b>EASTERN REGIONS</b>						
3 in the New England States	883,722	803,889	79,833	+14.7	+13.8	+24.8
14 in the Middle Atlantic States	15,551,393	13,824,247	1,727,146	+13.0	+13.2	+11.0
Pennsylvania Turnpike <sup>2</sup>	431,555	363,012	68,543	+ 5.0	+ 1.9	+25.5
4 in the South Atlantic States	588,932	483,704	105,228	+ 5.3	+ 3.1	+16.7
<b>TOTAL - 22 facilities</b>	<b>17,455,602</b>	<b>15,474,852</b>	<b>1,980,750</b>	<b>+12.6</b>	<b>+12.6</b>	<b>+12.3</b>
<b>CENTRAL REGIONS</b>						
3 on the Great Lakes Canadian border <sup>3</sup>	884,092	863,664	20,428	+ 6.4	+ 6.7	- 3.7
1 in the Great Lakes Region	122,462	118,277	4,185	+ 4.5	+ 4.2	+13.6
Subtotal - 4 facilities	1,006,554	981,941	24,613	+ 6.2	+ 6.4	- 1.1
3 on the Ohio River	413,895	362,735	51,160	+ 9.0	+ 8.2	+14.3
7 on the Mississippi and St. Crois Rivers St. Louis and North	908,477	793,879	114,598	+11.8	+11.0	+17.3
3 on the Miss. River south of St. Louis	145,735	108,108	37,627	+15.1	+12.9	+22.0
Subtotal - 10 facilities	1,054,212	901,987	152,225	+12.2	+11.2	+18.5
4 on the Missouri River	226,153	190,804	35,349	+ 5.5	+ 6.0	+ 3.3
3 in the West South Central States	27,495	26,402	1,093	- 7.1	- 5.1	-38.1
Subtotal - 7 facilities	253,648	217,206	36,442	+ 4.0	+ 4.5	+ 1.2
<b>TOTAL - 24 facilities</b>	<b>2,728,309</b>	<b>2,463,869</b>	<b>264,440</b>	<b>+ 8.6</b>	<b>+ 8.2</b>	<b>+12.9</b>
<b>WESTERN REGIONS</b>						
1 in California	2,328,375	2,112,685	215,690	+ 3.2	+ 2.8	+ 7.0
4 in the Oregon-Washington Area	506,133	448,037	58,096	+ 4.4	+ 3.9	+ 8.3
<b>TOTAL - 5 facilities</b>	<b>2,834,508</b>	<b>2,560,722</b>	<b>273,786</b>	<b>+ 3.4</b>	<b>+ 3.0</b>	<b>+ 7.3</b>
<b>UNITED STATES</b>						
<b>TOTAL - 51 facilities</b>	<b>23,018,419</b>	<b>20,499,443</b>	<b>2,518,976</b>	<b>+10.9</b>	<b>+10.8</b>	<b>+11.8</b>

<sup>1</sup>Non-revenue vehicles included in report and treated as passenger cars unless otherwise specified.

<sup>2</sup>Number of vehicles, those using any portion of the facility.

<sup>3</sup>One of these facilities is in Western New York and therefore is related to similar facilities in the Central States.

THE UNIVERSITY OF CHICAGO

PHYSICS DEPARTMENT

PHYSICS 311

LECTURE 1

MECHANICS

1.1 Kinematics

1.2 Dynamics

1.3 Energy

1.4 Momentum

1.5 Angular Momentum

1.6 Oscillations

1.7 Waves

1.8 Relativity

1.9 Quantum Mechanics

1.10 Modern Physics





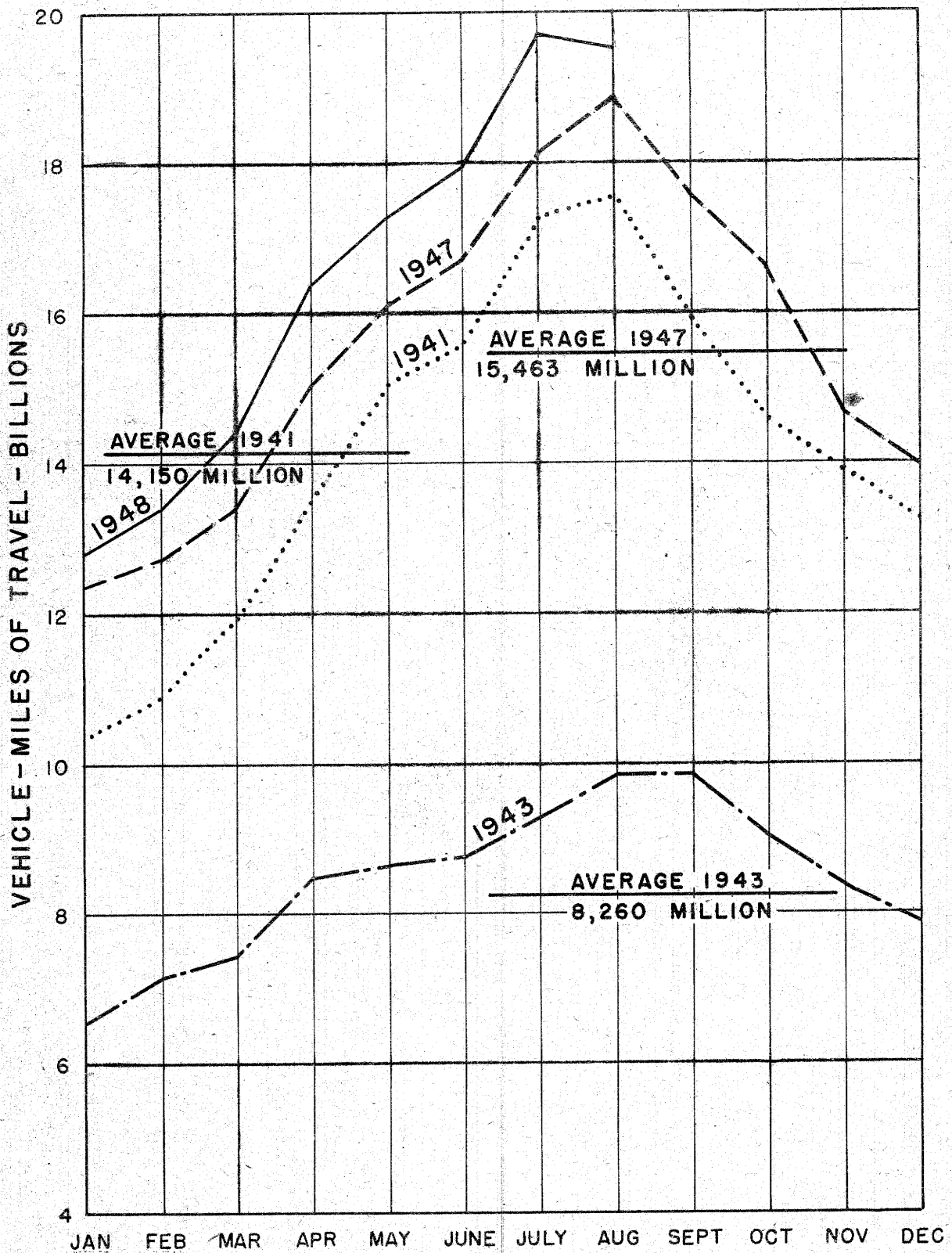


FIGURE 2 - VEHICLE - MILES OF TRAVEL ON ALL RURAL ROADS IN 1941, 1943, 1947 AND 1948

