



TRAFFIC VOLUME TRENDS

Washington, D. C.

August 1965

AUGUST (PRELIMINARY) AND JULY (REVISED), 1965 COMPARED TO 1964

Table 1.—Summary by Road Class and by Region

	Preliminary data for August 1965			Revised data for July 1965		
	Vehicle-miles (millions)		Percentage change	Vehicle-miles (millions)		Percentage change
	1964	1965		1964	1965	
Class of road, All States:						
Main rural roads.....	34,854	36,361	+4.3	34,347	36,218	+5.4
Local rural roads.....			+2.1			+3.2
All rural roads.....			+3.8			+4.9
City streets.....			+3.3			+4.2
All roads and streets.....			+3.6			+4.6
By region, 48 States (main rural only):						
Eastern region.....	12,943	13,546	+4.7	12,708	13,446	+5.8
Central region.....	16,281	16,962	+4.2	16,282	17,196	+5.6
Western region.....	5,519	5,734	+3.9	5,245	5,458	+4.1
Total.....	34,743	36,242	+4.3	34,235	36,100	+5.4

Table 2.—Changes on Main Rural Roads by States

Division and state	August (preliminary)		July (revised)		Division and state	August (preliminary)		July (revised)	
	Number of stations ¹	Percentage change	Number of stations ¹	Percentage change		Number of stations ¹	Percentage change	Number of stations ¹	Percentage change
NEW ENGLAND:					EAST SOUTH CENTRAL:				
Connecticut.....	17	+4.1	18	+5.4	Alabama.....	28	+4.9	29	+5.6
Maine.....	16	+5.0	15	+5.1	Kentucky.....	35	+4.9	35	+5.7
Massachusetts.....	9	+3.6			Mississippi.....	40	+9.8	41	+8.8
New Hampshire.....	58	+7.8	55	+8.3	Tennessee.....	24	+4.3	24	+2.0
Rhode Island.....	5	+12.0	5	+7.8	WEST NORTH CENTRAL:			25	+4.9
Vermont.....	36	+4.9	35	+6.3	Iowa.....			13	+1.7
MIDDLE ATLANTIC:					Kansas.....	13	+1.7	61	+2.0
New Jersey.....	12	+5.0	11	+7.5	Minnesota.....	24	+6.0	27	+8.1
New York.....	26	+5.0	25	+6.9	Missouri.....	21	+6.4	19	+5.4
Pennsylvania.....			53	+3.5	Nebraska.....	19	+3.3	20	+3.6
SOUTH ATLANTIC					North Dakota.....	35	+5.0	33	+6.8
(North):					South Dakota.....	30	+3.2	30	+4.1
Delaware.....	10	+3.2	9	+5.4	WEST SOUTH CENTRAL:				
Maryland.....	32	+4.2	34	+7.5	Arkansas.....	33	+8.8	32	+6.1
Virginia.....					Louisiana.....			38	+6.7
West Virginia.....	23	+4.5	24	+4.7	Oklahoma.....	20	+4.0	20	+7.5
SOUTH ATLANTIC					Texas.....	87	+5.0	89	+5.6
(South):					MOUNTAIN:				
Florida.....			60	+8.2	Arizona.....	11	+5.8	11	+5.5
Georgia.....	25	+1.9	25	+7.1	Colorado.....	37	+2.7	36	+1.7
North Carolina.....	41	+5.9	36	+7.0	Idaho.....	29	+6.0	26	+6.2
South Carolina.....	6	+9.3	7	+7.1	Montana.....	23	+5.5	23	+5.9
EAST NORTH CENTRAL:					Nevada.....	34	+6.0	34	+9.4
Illinois.....	9	+1.4	13	+5.4	New Mexico.....				+5.2
Indiana.....	21	+4.8	21	+6.7	Utah.....	37	+6.5	36	+2.3
Michigan.....	36	+6.2	38	+6.0	Wyoming.....	35	+4.5	35	+6.0
Ohio.....	7	+1.6	7	+4.2	PACIFIC:				
Wisconsin.....			38	+7.5	California.....		+2.7		+2.1
Alaska.....	12	+9.4	9	+7.9	Oregon.....			84	+4.2
Hawaii.....					Washington.....			10	+6.4

¹Rural mileage of each major toll route is considered as one station. Where the number of stations is not shown, the States prepared traffic estimates, generally based on extensive traffic sampling surveys.

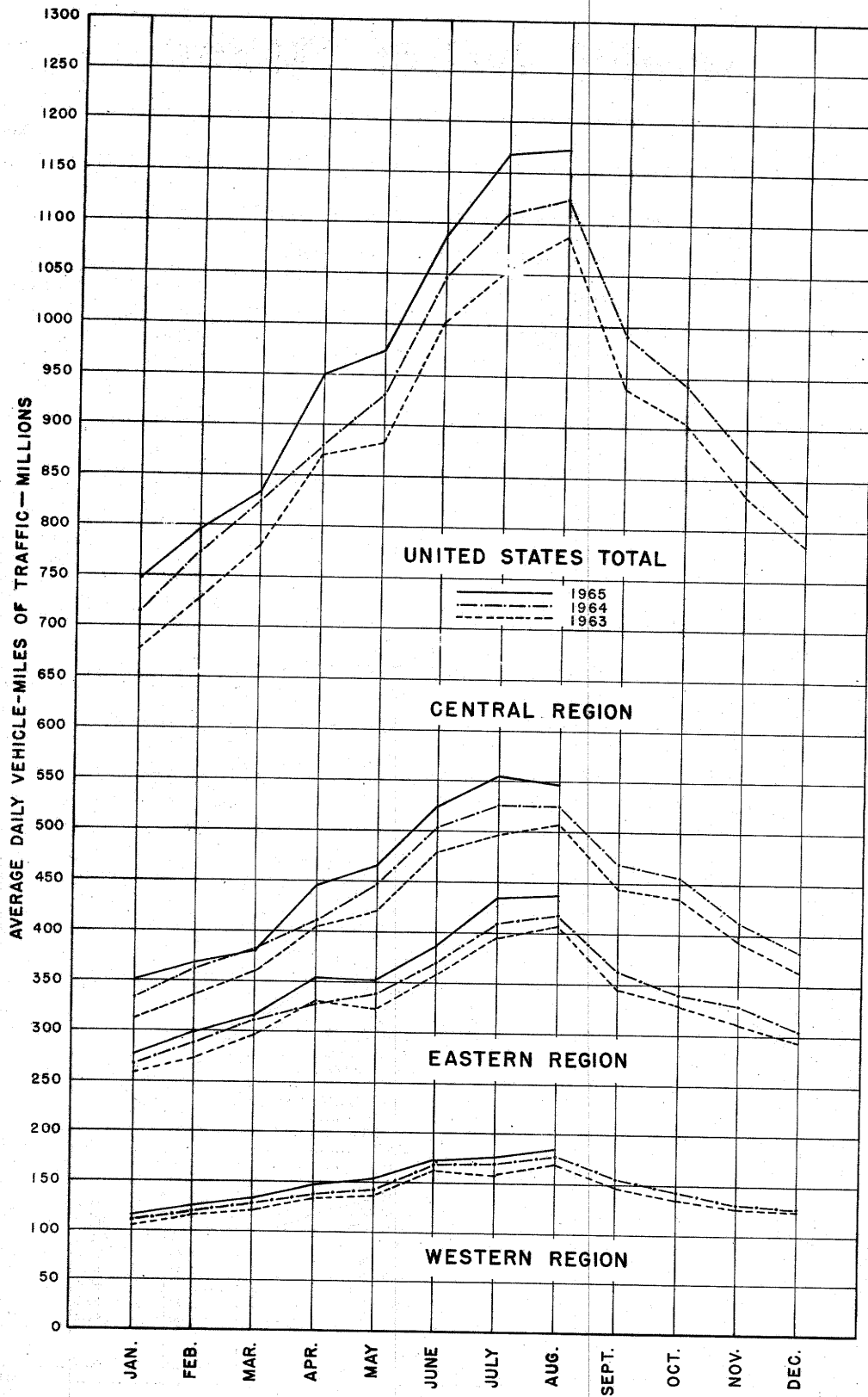


FIGURE 1—TRAVEL ON MAIN RURAL ROADS, BY MONTHS

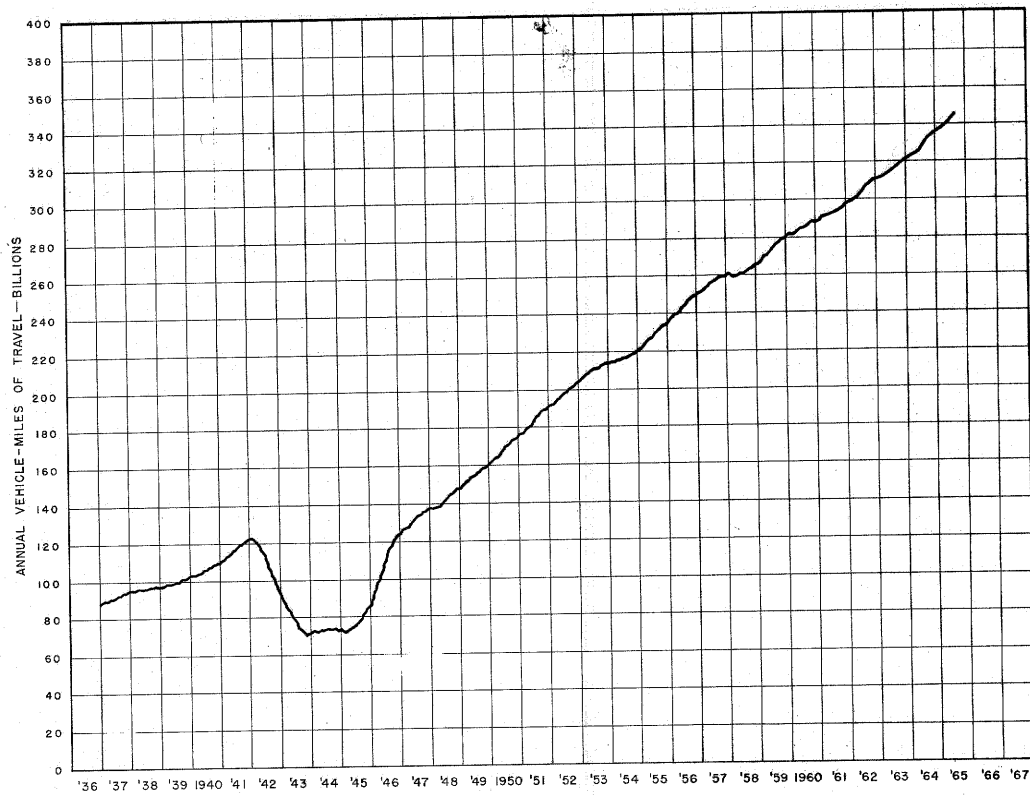


FIGURE 2—TRAVEL ON MAIN RURAL ROADS BY 12-MONTH PERIODS ENDING EACH MONTH, IN VEHICLE-MILES

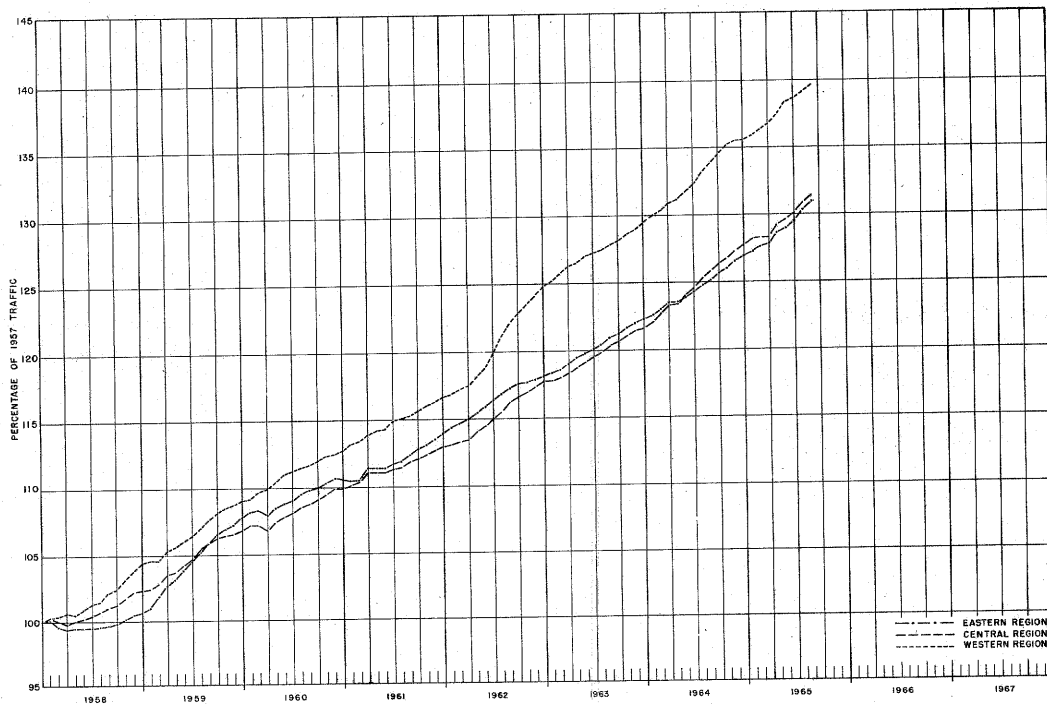


FIGURE 3—TRAVEL ON MAIN RURAL ROADS BY 12-MONTH PERIODS ENDING EACH MONTH, AS PERCENTAGE OF TRAFFIC IN THE CALENDAR YEAR 1957

U.S. DEPARTMENT OF COMMERCE
BUREAU OF PUBLIC ROADS
WASHINGTON, D.C. 20235

OFFICIAL BUSINESS

POSTAGE AND FEES PAID
U.S. DEPARTMENT OF COMMERCE