

*Mr. Hitchcock*

PUBLIC ROADS ADMINISTRATION  
FEDERAL WORKS AGENCY

INFORMATIONAL MEMORANDUM NO. 74

DATE: OCTOBER 30, 1944

SUBJECT: TRAFFIC VOLUME TRENDS

The preliminary data for September 1944 indicate that traffic on rural roads is slightly lower than in the corresponding month of 1943. Traffic in the eastern portion of the country decreased 3.1 percent, that in the central portion remained the same and that in the western portion decreased 5.3 percent. Traffic in the entire country decreased 1.9 percent.

Comparisons of city traffic in September 1944 with that in September 1943 are as follows:

11 stations in Washington, D. C. -2.2  
3 stations in Detroit, Michigan -7.5

H. S. FAIRBANK, DEPUTY COMMISSIONER,  
PUBLIC ROADS ADMINISTRATION.

Attachments.

FORTRAN PROGRAM PLAN  
FOR THE ...

The following is a description of the program plan for the ...  
The program is designed to ...  
The input data is ...  
The output is ...

The program is written in FORTRAN and runs on the ...  
The program is ...

TABLE 1.--PRELIMINARY SUMMARY OF AUTOMATIC TRAFFIC RECORDER DATA FOR SEPTEMBER 1944 INCLUDING 536 STATIONS IN 40 STATES<sup>1</sup>

Type of highway and State	Number of stations	Percentage change from Sept. 1943	Type of highway and State	Number of stations	Percentage change from Sept. 1943
<i>STATE HIGHWAYS</i>			<i>STATE HIGHWAYS (Continued)</i>		
Alabama	7	+ 7.6	Vermont	8	+ 0.9
Arizona	5	- 3.1	Virginia	5	- 4.5
California	5	+ 2.9	Washington	9	- 9.2
Colorado	5	+ 5.3	West Virginia	11	0.0
Connecticut	17	- 6.6	Wisconsin	9	+ 5.7
Georgia	6	- 3.7	Wyoming	4	+ 6.0
Idaho	7	-11.1			
Illinois	5	+ 3.6	<i>TOTAL - 40 STATES</i>	505	- 2.8
Iowa	26	+ 0.3			
Kansas	8	+ 6.8	<i>LOCAL HIGHWAYS</i>		
Kentucky	13	+ 0.2	Connecticut	3	- 2.6
Maine	10	- 5.1	Georgia	4	- 2.6
Maryland	16	- 2.9	Iowa	10	-11.1
Massachusetts	9	- 3.8	Maryland	1	+11.1
Michigan	26	- 3.0	Massachusetts	1	+15.9
Mississippi	10	+ 3.3	Michigan	2	+ 9.7
Montana	12	- 1.6	Montana	2	+ 3.1
Nebraska	11	+ 1.7	Nebraska <sup>2</sup>	1	+94.0
Nevada <sup>2</sup>	12	-18.4	North Dakota	2	- 8.9
New Hampshire	18	+16.7	Ohio	2	+ 8.1
New Mexico	12	+ 4.1	Oregon	1	- 9.3
New York	11	- 6.0	Wisconsin	2	- 1.3
North Carolina	20	- 4.6			
North Dakota	10	+ 3.6	<i>TOTAL - 12 STATES</i>	31	+ 0.3
Ohio	25	- 2.1			
Oklahoma	20	+ 0.2	<i>ALL HIGHWAYS</i>		
Oregon	3	+ 2.1	<i>40 STATES</i>	536	- 1.9
Pennsylvania	30	- 1.3			
Rhode Island	3	+ 4.7	<i>3 EASTERN REGIONS</i>	178	- 3.1
South Carolina	5	- 2.0	<i>4 CENTRAL REGIONS</i>	273	0.0
South Dakota	10	+ 3.5	<i>2 WESTERN REGIONS</i>	85	- 5.3
Tennessee	3	-21.1			
Texas	71	- 0.9			
Utah	8	- 9.4			

<sup>1</sup> Includes all States except Arkansas, Delaware, Florida, Indiana, Louisiana, Minnesota, Missouri, and New Jersey.

<sup>2</sup> Abnormal conditions in 1943 or 1944 affected 2 counts in the following States: Nebraska, the local station carries extra traffic detoured to it. Nevada, excluding station 110, the decrease is 1.6 percent.



TABLE 2.--REVISED SUMMARY OF AUTOMATIC TRAFFIC RECORDER DATA FOR  
AUGUST 1944 INCLUDING 630 STATIONS IN 46 STATES<sup>1</sup>

Region and State	Number of stations	Percentage change from August 1943	Region and State	Number of stations	Percentage change from August 1943
<i>NEW ENGLAND</i>			<i>EAST SOUTH CENTRAL</i>		
Connecticut	20	+10.9	Alabama	10	+ 1.1
Maine	9	+ 7.2	Kentucky	10	- 1.1
Massachusetts	10	+13.5	Mississippi	10	- 2.3
New Hampshire	19	+11.2	Tennessee	3	+ 0.3
Rhode Island	3	+18.1	<i>Subtotal</i>	33	- 0.7
Vermont	8	+10.6	<i>WEST SOUTH CENTRAL</i>		
<i>Subtotal</i>	69	+11.6	Arkansas	21	+ 0.2
<i>MIDDLE ATLANTIC</i>			Louisiana	8	+ 1.0
New York	13	+16.7	Oklahoma	20	- 3.9
Pennsylvania	30	+ 6.0	Texas	71	- 2.4
<i>Subtotal</i>	43	+10.9	<i>Subtotal</i>	120	- 2.0
<i>SOUTH ATLANTIC</i>			<i>MOUNTAIN</i>		
Delaware	4	+10.6	Arizona	5	- 2.5
Maryland	17	+11.8	Colorado	6	+ 4.1
Virginia	6	+ 4.7	Idaho	7	- 2.2
West Virginia	9	+ 0.6	Montana	14	+ 8.4
<i>Subtotal north portion</i>	36	+ 8.5	Nevada	12	-20.0
Florida	18	+ 5.5	New Mexico	13	+ 3.7
Georgia	8	- 3.5	Utah	5	+ 3.1
North Carolina	19	- 3.8	Wyoming	4	+11.3
South Carolina	5	- 5.6	<i>Subtotal</i>	66	- 0.5
<i>Subtotal south portion</i>	50	- 1.1	<i>PACIFIC</i>		
<i>Subtotal region</i>	86	+ 3.1	California	6	- 6.5
<i>EAST NORTH CENTRAL</i>			Oregon	4	- 0.2
Illinois	2	+ 3.9	Washington	9	-11.8
Indiana	23	- 8.0	<i>Subtotal</i>	19	- 8.2
Michigan	28	- 3.1	<i>TOTAL ALL STATES</i> <sup>1</sup>	630	- 0.2
Ohio	26	- 2.4	<i>STATE HIGHWAYS</i> <sup>1</sup>	594	- 1.0
Wisconsin	11	+ 6.2	<i>LOCAL HIGHWAYS</i>	36	+ 1.8
<i>Subtotal</i>	90	- 2.7	<i>3 EASTERN REGIONS</i>	198	+ 7.5
<i>WEST NORTH CENTRAL</i>			<i>4 CENTRAL REGIONS</i>	347	- 2.9
Iowa	36	- 7.7	<i>2 WESTERN REGIONS</i>	85	- 5.6
Kansas	8	+ 2.1			
Missouri	26	- 7.5			
Nebraska	12	- 3.1			
North Dakota	13	+ 2.5			
South Dakota	9	+ 1.1			
<i>Subtotal</i>	104	- 5.1			

<sup>1</sup>Includes all States except Minnesota and New Jersey.



TABLE 3.--NUMBER OF VEHICLES, CLASSIFIED BY TYPES, USING TOLL FACILITIES AND DRAWBRIDGES  
IN SEPTEMBER 1944 COMPARED WITH THOSE IN SEPTEMBER 1943 AND 1941

Facilities	September 1944			Percentage change from 1943			Percentage change from 1941		
	Total	Passenger cars	Trucks and busses	Total	Passenger cars	Trucks and busses	Total	Passenger cars	Trucks and busses
<b>THREE EASTERN REGIONS</b>									
4 in the New England States	43,098	38,406	4,692	- 9.7	- 7.8	-22.9	-49.9	-53.1	+11.7
11 in the Middle Atlantic States	4,090,777	3,248,048	842,729	+ 4.7	+ 5.2	+ 2.9	-24.4	-28.7	- 1.1
Fleetwood Viaduct, Westchester County, New York	187,863	187,863	---	+10.3	+10.3	--	-50.7	-50.7	--
5 in the South Atlantic States	243,146	181,932	61,214	- 1.0	+ 1.0	- 6.5	-42.7	-48.9	-10.6
<i>TOTAL</i> - 21 facilities in the Eastern States <sup>1</sup>	4,564,884	3,656,249	908,635	+ 4.4	+ 5.0	+ 2.1	-27.6	-32.0	- 1.8
<i>TOTAL</i> - 25 facilities in the Eastern States	4,832,761	3,880,687	952,074	+ 4.9	+ 5.3	+ 3.0			
<b>FOUR CENTRAL REGIONS</b>									
6 on the Great Lakes Canadian Border <sup>2</sup>	456,060	412,930	43,130	+24.9	+25.8	+16.9	- 8.0	-11.5	+50.0
2 in the Great Lakes Region	80,547	60,256	20,291	+19.3	-27.3	+ 0.4	-47.9	-54.3	-10.0
<i>Subtotal</i> - 8 facilities	536,607	473,186	63,421	+24.0	+26.0	+11.0	-17.4	-21.0	+23.6
9 on the Ohio River <sup>3</sup>	766,462	649,711	116,751	+ 6.3	+ 6.9	+ 2.9	-29.2	-30.8	-18.3
9 in Kentucky	130,726	101,767	28,959	- 0.8	- 0.4	- 2.5	-29.7	-34.0	- 8.9
<i>Subtotal</i> - 18 facilities	897,188	751,478	145,710	+ 5.2	+ 5.9	+ 1.8	-29.3	-31.3	-16.6
7 on the Mississippi River, St. Louis and North	394,752	330,332	64,420	- 6.3	- 5.1	-12.0	-51.2	-53.1	-37.8
3 on the Mississippi River south of St. Louis	76,522	55,678	20,844	+25.3	+24.5	+27.6	+ 1.9	+ 4.2	- 3.8
<i>Subtotal</i> - 10 facilities	471,274	386,010	85,264	- 2.9	+ 1.7	- 4.8	-46.7	-49.1	-31.9
3 on the Missouri River	108,081	85,440	22,641	+ 2.3	+ 8.0	-14.7	-11.2	-10.6	-13.2
2 in the Missouri River area	3,036	2,465	571	+50.4	+45.4	+76.2	-42.1	-45.7	-19.6
<i>Subtotal</i> - 5 facilities	111,117	87,905	23,212	+ 3.2	+ 8.8	-13.6	-12.5	-12.2	-13.4
<i>TOTAL</i> - 41 facilities in the Central States <sup>1</sup>	2,016,186	1,698,579	317,607	+ 7.5	+ 9.0	+ 0.3	-31.2	-33.4	-16.0
<i>TOTAL</i> - 45 facilities in the Central States	2,272,787	1,915,314	357,473	+ 6.8	+ 8.2	- 4.8			
<b>TWO WESTERN REGIONS</b>									
4 in California	2,108,562	1,837,813	270,749	- 6.6	- 8.5	+ 8.3	-18.2	-22.1	+24.0
3 in Oregon-Washington area	198,584	166,950	31,634	- 1.7	- 2.3	+ 1.8	- 2.6	- 8.0	+41.5
<i>TOTAL</i> - 7 facilities in the Western area <sup>1</sup>	2,307,146	2,004,763	302,383	- 6.2	- 8.0	+ 7.6	- 1.7	-21.1	+25.6
<i>TOTAL</i> - 8 facilities in the Western area	2,318,555	2,014,722	303,833	- 6.1	- 7.9	+ 7.5			
<i>TOTAL</i> - 69 facilities in the United States <sup>1</sup>	8,888,216	7,359,591	1,528,625	+ 2.1	+ 2.0	+ 2.7	-26.0	-29.7	- 1.0
<i>TOTAL</i> - 78 facilities in the United States	9,424,103	7,810,723	1,613,380	+ 2.4	+ 2.2	+ 3.1			
4 facilities reporting only total traffic	198,549			- 2.6					
32 drawbridges in Eastern North Carolina (not toll) based on two 8-hour counts, one week day and one Saturday.	37,905	29,616	8,289	- 1.7	0.0	- 7.1	-17.0	-19.2	- 7.9

<sup>1</sup> These facilities have comparative data for 1944, 1943, and 1941 and are included in the larger total below.  
<sup>2</sup> Three of these facilities are in Western New York and therefore are related to similar facilities in the Central States.  
<sup>3</sup> Five of these facilities are between Ohio and West Virginia.





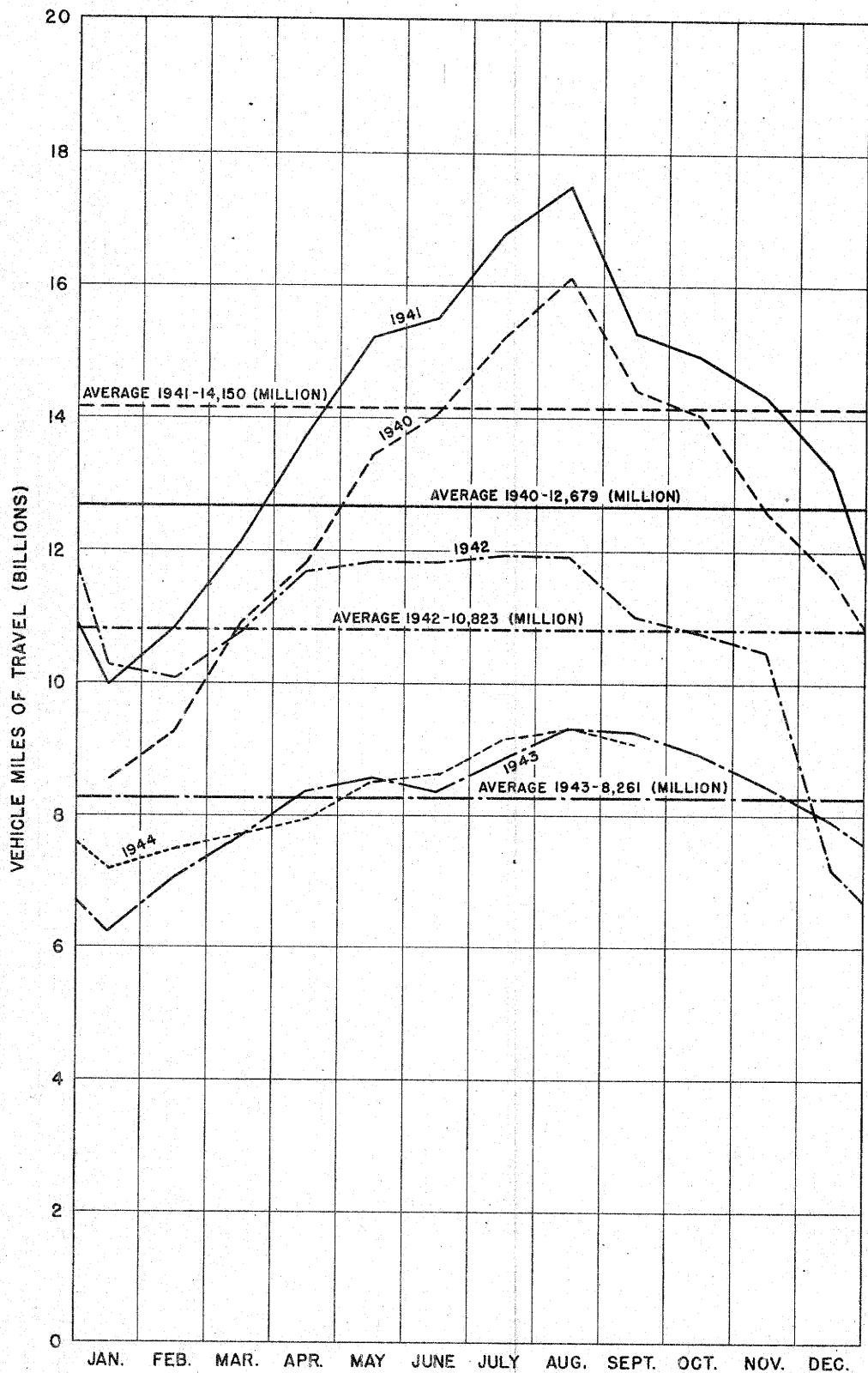
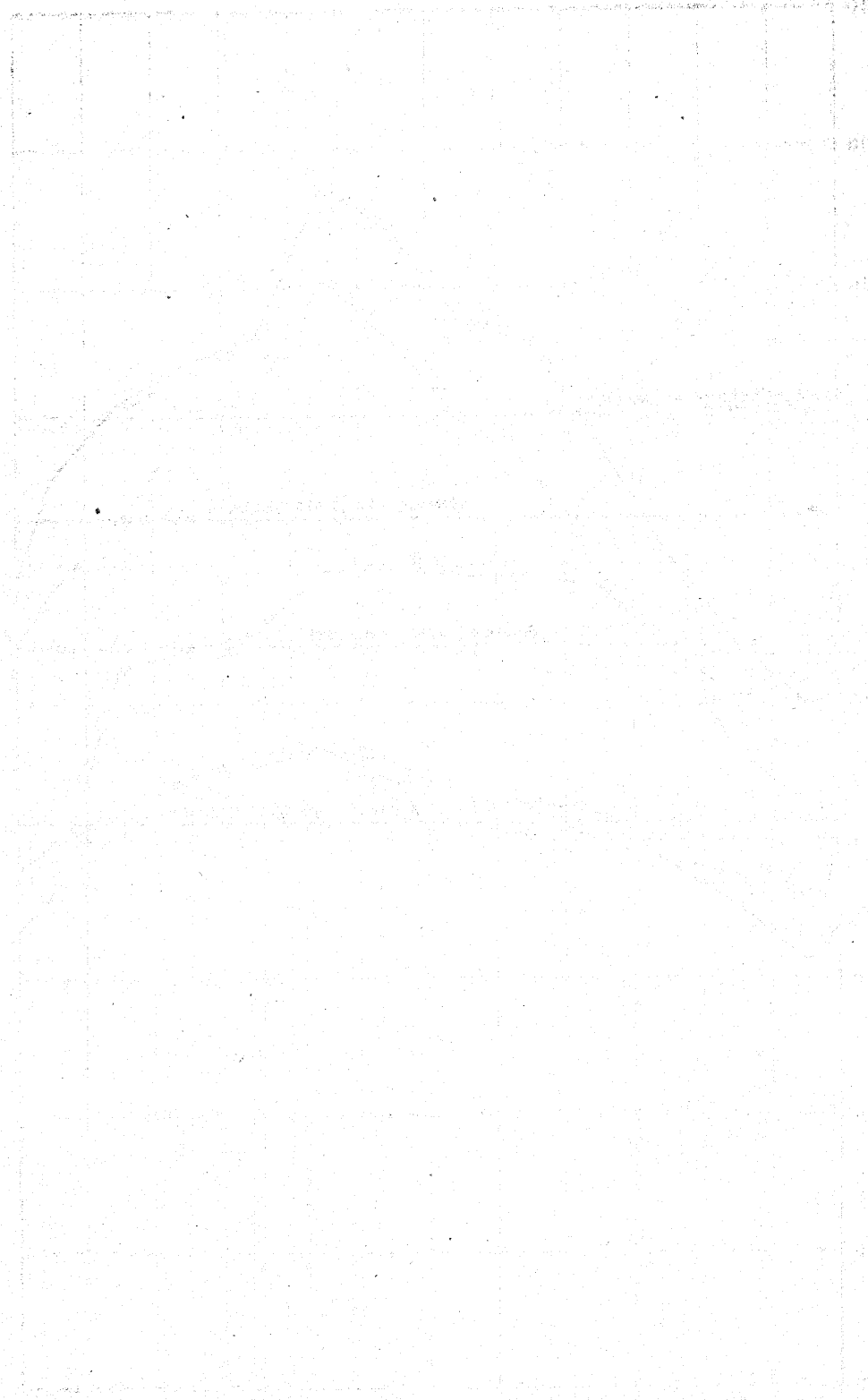


FIGURE I. VEHICLE MILES OF TRAVEL ON ALL RURAL ROADS 1940 TO 1944 BY MONTHS

12/20/78



FOR THE RECORD - ALL INFORMATION CONTAINED HEREIN IS UNCLASSIFIED

DATE 10/20/01 BY SP-6 JAR/STP

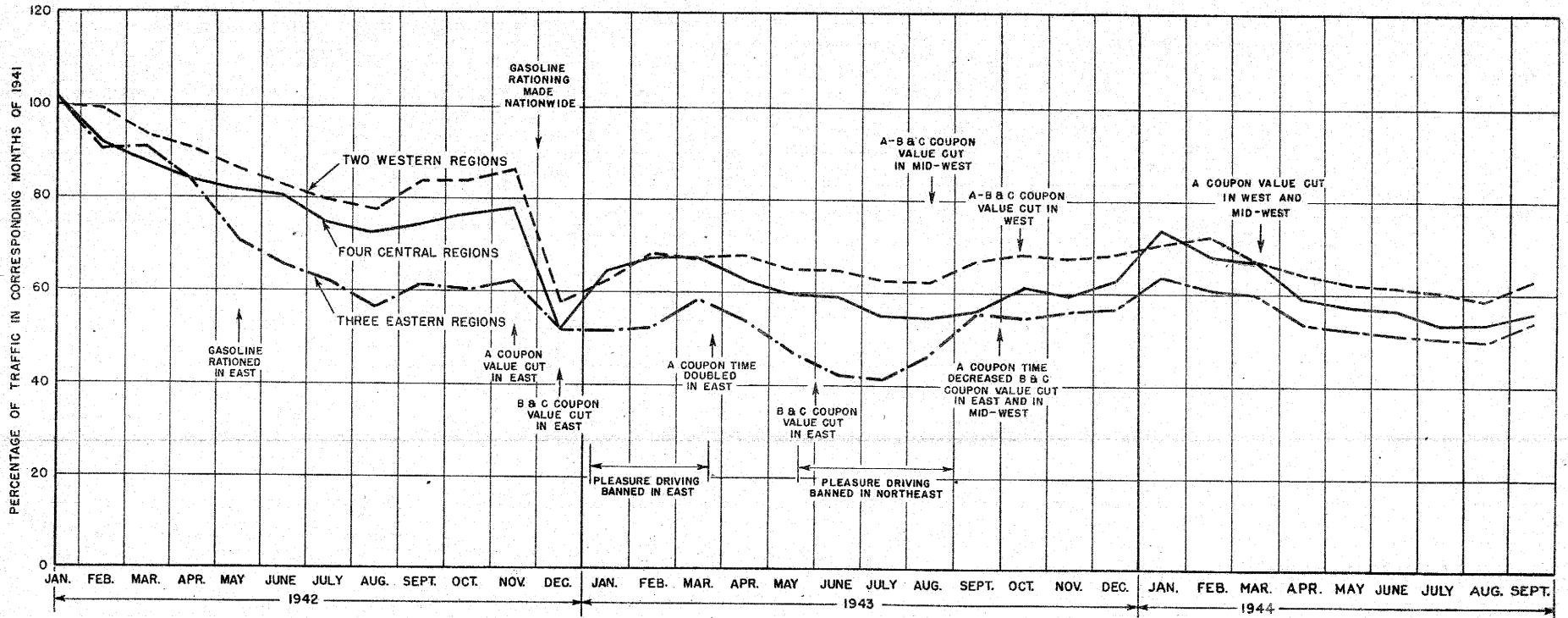


FIGURE 2. PERCENTAGE RELATIONS OF RURAL TRAFFIC IN MONTHS OF 1942, 1943, AND 1944 WITH THAT IN CORRESPONDING MONTHS OF 1941

