

TRAFFIC VOLUME TRENDS

Washington, D. C.

December 1949

On the basis of preliminary figures, motor-vehicle travel on main and local roads for the country as a whole was higher during December 1949 than in any previous December.

	Vehicle-miles (millions)	Percentage change from—		
		1941	1943	1948
Main rural roads.....	11,956	+29.4	+111.6	+8.6
Local rural roads.....	3,955	+0.4	+88.7	+4.9
All rural roads.....	15,911	+20.4	+105.4	+7.6

Traffic on rural roads in the geographic regions and changes from previous years were as follows:

	Vehicle-miles (millions)	Percentage change from—		
		1941	1943	1948
Eastern regions.....	5,124	+17.0	+109.5	+8.4
Central regions.....	8,354	+21.2	+110.5	+9.0
Western regions.....	2,433	+25.4	+82.8	+1.9

Travel on city streets was heavier than in any previous December. Comparisons with December of previous years for city streets, rural roads and all roads and streets are as follows:

	Percentage change from—		
	1941	1943	1948
City streets.....	+32.8	+85.6	+9.2
Rural roads.....	+20.4	+105.4	+7.6
All roads and streets.....	+26.5	+94.7	+8.4

Attachments

Table 1.—PRELIMINARY SUMMARY OF AUTOMATIC TRAFFIC RECORDER DATA FOR DECEMBER 1949 INCLUDING 736 STATIONS IN 46 STATES

Type of highway and State	Number of stations	Traffic volume percentage change from December 1948	Type of highway and State	Number of stations	Traffic volume percentage change from December 1948
STATE HIGHWAYS					
Alabama.....	6	+9.1	Texas.....	91	+9.2
Arizona.....	5	-1.5	Utah.....	12	+2.8
Arkansas.....	14	+11.3	Vermont.....	12	+3.7
California.....	6	+0.1	Virginia.....	3	+10.2
Colorado.....	22	+22.4	Washington.....	10	+10.9
Connecticut.....	17	+15.2	West Virginia.....	10	+6.7
Delaware.....	5	+23.1	Wisconsin.....	8	+9.8
Florida.....	20	+11.6	Wyoming.....	6	+13.1
Georgia.....	7	+2.6			
Idaho.....	8	+27.8	TOTAL—46 STATES.....	707	+8.6
Illinois.....	5	+12.9			
Indiana.....	21	+11.1	LOCAL HIGHWAYS		
Iowa.....	26	+12.0	Alabama.....	2	+11.5
Kansas.....	14	+2.6	Connecticut.....	3	+7.3
Kentucky.....	13	+13.1	Delaware.....
Louisiana.....	31	+17.2	Georgia.....	3
Maine.....	12	+2.1	Indiana.....	1	+4.0
Maryland.....	17	+14.9	Iowa.....	7	+2.8
Massachusetts.....	9	+14.6	Maryland.....	1	+20.0
Michigan.....	26	+1.9	Michigan.....	1	+5.8
Minnesota.....	24	+11.1	Missouri.....	2	-0.7
Mississippi.....	10	+8.3	Montana.....	2	+1.9
Missouri.....	25	+8.5	Nebraska.....	2	+28.8
Montana.....	12	+12.3	North Dakota.....	1	+18.5
Nebraska.....	11	+20.9	Ohio.....	1	+6.9
Nevada.....	16	+8.2	Oregon.....	1	+4.7
New Hampshire.....	Rhode Island.....	-23.6
New Jersey.....	4	+9.4	Tennessee.....	+3.8
New Mexico.....	15	+1.5	Wisconsin.....	1
New York.....			
North Carolina.....	20	+9.4	TOTAL—15 STATES.....	29	+4.9
North Dakota.....	9	+11.2			
Ohio.....	12	+3.1	ALL HIGHWAYS—		
Oklahoma.....	20	+7.0	46 STATES.....	736	+7.6
Oregon.....	19	+0.3	3 EASTERN REGIONS.....	185	+8.4
Pennsylvania.....	20	+6.2	4 CENTRAL REGIONS.....	417	+9.0
Rhode Island.....	3	+5.0	2 WESTERN REGIONS.....	134	+1.9
South Carolina.....	8	-0.2			
South Dakota.....	17	+7.4			
Tennessee.....	16	+23.1			

MEMORANDUM FOR THE RECORD

DATE: 10/15/47

TO: SAC, NEW YORK

FROM: SA [Name], NEW YORK

SUBJECT: [Subject]

[Text]

[Text]

[Text]

[Text]

[Text]

[Text]

[Text]

[Text]

[Text]

[Text]

[Text]

[Text]

[Text]

[Text]

[Text]

[Text]

[Text]

[Text]

[Text]

[Text]

[Text]

[Text]

[Text]

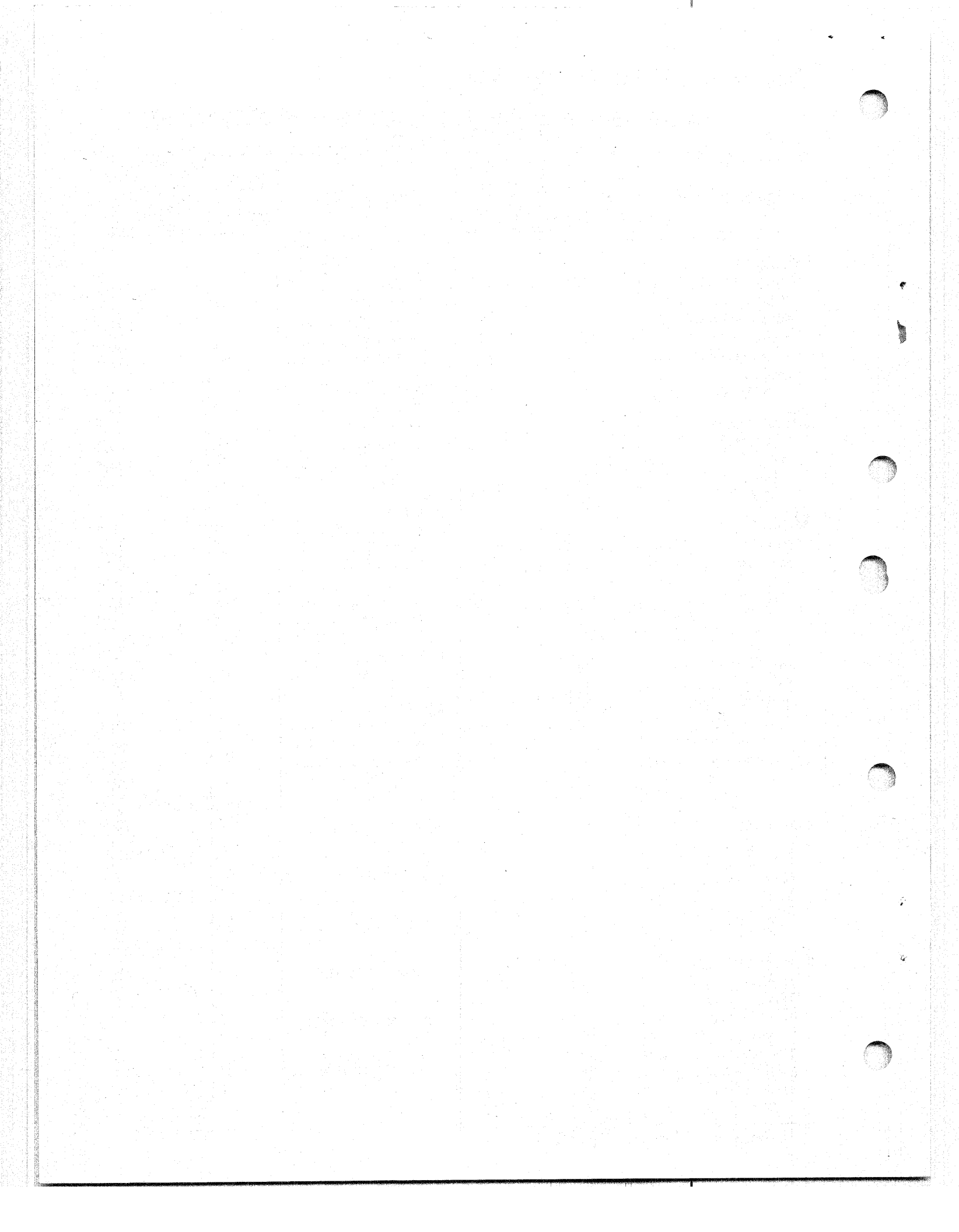
[Text]

[Text]

Table 2.—REVISED SUMMARY OF AUTOMATIC TRAFFIC RECORDER DATA FOR NOVEMBER 1949 INCLUDING 757 STATIONS IN 47 STATES¹

Region and State	Number of stations	Traffic volume percentage change from November 1948	Region and State	Number of stations	Traffic volume percentage change from November 1948
NEW ENGLAND:			EAST SOUTH CENTRAL:		
Connecticut.....	20	+10.7	Alabama.....	10	+11.3
Maine.....	12	+1.7	Kentucky.....	11	+12.9
Massachusetts.....	9	+12.5	Mississippi.....	10	+12.7
New Hampshire.....	14	+2.4	Tennessee.....	16	+22.5
Rhode Island.....	3	+2.1	<i>Subtotal</i>	47	+14.8
Vermont.....	12	-2.0	WEST SOUTH CENTRAL:		
<i>Subtotal</i>	70	+7.5	Arkansas.....	17	+19.7
MIDDLE ATLANTIC:			Louisiana.....	31	+18.7
New Jersey.....	4	+9.0	Oklahoma.....	20	+7.9
New York.....	Texas.....	88	+14.0
Pennsylvania.....	29	+2.3	<i>Subtotal</i>	156	+14.3
<i>Subtotal</i>	33	+3.9	MOUNTAIN:		
SOUTH ATLANTIC:			Arizona.....	5	-1.0
Delaware.....	6	+14.7	Colorado.....	22	+30.0
Maryland.....	18	+10.2	Idaho.....	8	+40.6
Virginia.....	3	+13.7	Montana.....	14	+10.2
West Virginia.....	9	+7.2	Nevada.....	16	+10.8
<i>Subtotal north</i>	New Mexico.....	14	+5.6
<i>portion</i>	36	+8.8	Utah.....	12	+8.5
Florida.....	18	+10.8	Wyoming.....	6	+18.0
Georgia.....	10	+5.1	<i>Subtotal</i>	97	+15.4
North Carolina.....	20	+4.6	PACIFIC:		
South Carolina.....	8	+3.8	California.....	5	-2.1
<i>Subtotal south</i>	Oregon.....	24	+16.5
<i>portion</i>	56	+6.3	Washington.....	10	+7.5
<i>Subtotal</i>	<i>Subtotal</i>	39	+10.1
<i>region</i>	92	+7.5	TOTAL ALL STATES.....		
EAST NORTH CENTRAL:				757	+7.0
Illinois.....	5	+11.7	STATE HIGHWAYS.....		
Indiana.....	22	+10.5		725	+7.9
Michigan.....	28	+1.9	LOCAL HIGHWAYS.....		
Ohio.....	18	+4.6		32	+4.4
Wisconsin.....	9	+7.6	3 EASTERN REGIONS....		
<i>Subtotal</i>	82	+5.5		195	+5.0
WEST NORTH CENTRAL:			4 CENTRAL REGIONS....		
Iowa.....	34	+16.3		426	+9.2
Kansas.....	14	+7.9	2 WESTERN REGIONS....		
Minnesota.....	24	+11.6		136	+3.6
Missouri.....	27	+10.1			
Nebraska.....	12	+16.1			
North Dakota.....	13	+19.3			
South Dakota.....	17	+20.7			
<i>Subtotal</i>	141	+13.2			

¹ Combined State and local highways.



TRAFFIC VOLUME TRENDS — DECEMBER 1949

Table 3.—NUMBER OF VEHICLES, CLASSIFIED BY TYPES, USING TOLL FACILITIES IN DECEMBER 1949 COMPARED WITH THOSE IN DECEMBER 1948

Facilities	1949			Percentage change from 1948		
	Total	Passenger cars ¹	Trucks and busses	Total	Passenger cars	Trucks and busses
EASTERN REGIONS						
5 in the New England States.....	1,430,024	1,268,873	161,151	+11.1	+10.4	+17.4
6 in the Middle Atlantic States.....	7,117,637	5,840,305	1,277,332	+16.9	+20.5	+2.8
2 parkways in the Middle Atlantic States.....	1,426,524	1,426,524	+26.2	+26.2
Pennsylvania Turnpike ²	247,337	171,769	75,568	+13.7	+12.4	+16.7
Maine Turnpike ²	90,649	77,303	13,346	+0.8	-1.0	+13.0
5 in the South Atlantic States.....	534,292	426,710	107,582	+27.2	+28.2	+23.4
TOTAL 20 FACILITIES.....	10,846,463	9,211,484	1,634,979	+17.4	+19.8	+5.9
CENTRAL REGIONS						
3 on the Great Lakes Canadian border ³	259,153	241,291	17,862	+2.6	+2.6	+2.9
1 in the Great Lakes Region.....	13,175	11,279	1,896	+9.2	+13.5	-11.0
Subtotal 4 facilities.....	272,328	252,570	19,758	+2.9	+3.0	+1.4
3 on the Ohio River.....	288,526	247,694	40,832	+5.0	+6.4	-3.0
7 on the Mississippi and St. Croix Rivers, St. Louis and North.....	596,758	497,544	99,214	+8.0	+9.0	+4.2
4 on the Mississippi River south of St. Louis.....	200,197	153,143	47,054	+17.3	+20.4	+8.2
Subtotal 11 facilities.....	796,955	650,687	146,268	+10.2	+11.3	+5.5
4 on the Missouri River.....	202,693	170,022	32,671	+21.6	+24.2	+10.0
3 in the West South Central States.....	35,244	33,663	1,581	+21.5	+21.8	+14.2
Subtotal 7 facilities.....	237,937	203,685	34,252	+21.6	+23.8	+10.1
TOTAL 25 FACILITIES.....	1,595,746	1,354,636	241,110	+9.4	+10.4	+4.2
WESTERN REGIONS						
1 in California.....	2,266,648	2,081,825	204,823	+4.8	+5.4	-1.4
4 in the Oregon-Washington Area.....	95,650	78,312	17,338	-3.4	-2.6	-6.8
TOTAL 5 FACILITIES.....	2,362,298	2,160,137	222,161	+4.4	+5.1	-1.9
UNITED STATES						
TOTAL 50 FACILITIES.....	14,824,507	12,726,257	2,098,250	+14.2	+16.0	+4.8

¹ Non-revenue vehicles (when reported) included in report and treated as passenger cars unless otherwise specified. ² Number of vehicles, those using any portion of the facility. ³ One of these facilities is in Western New York and therefore is related to similar facilities in the Central States.

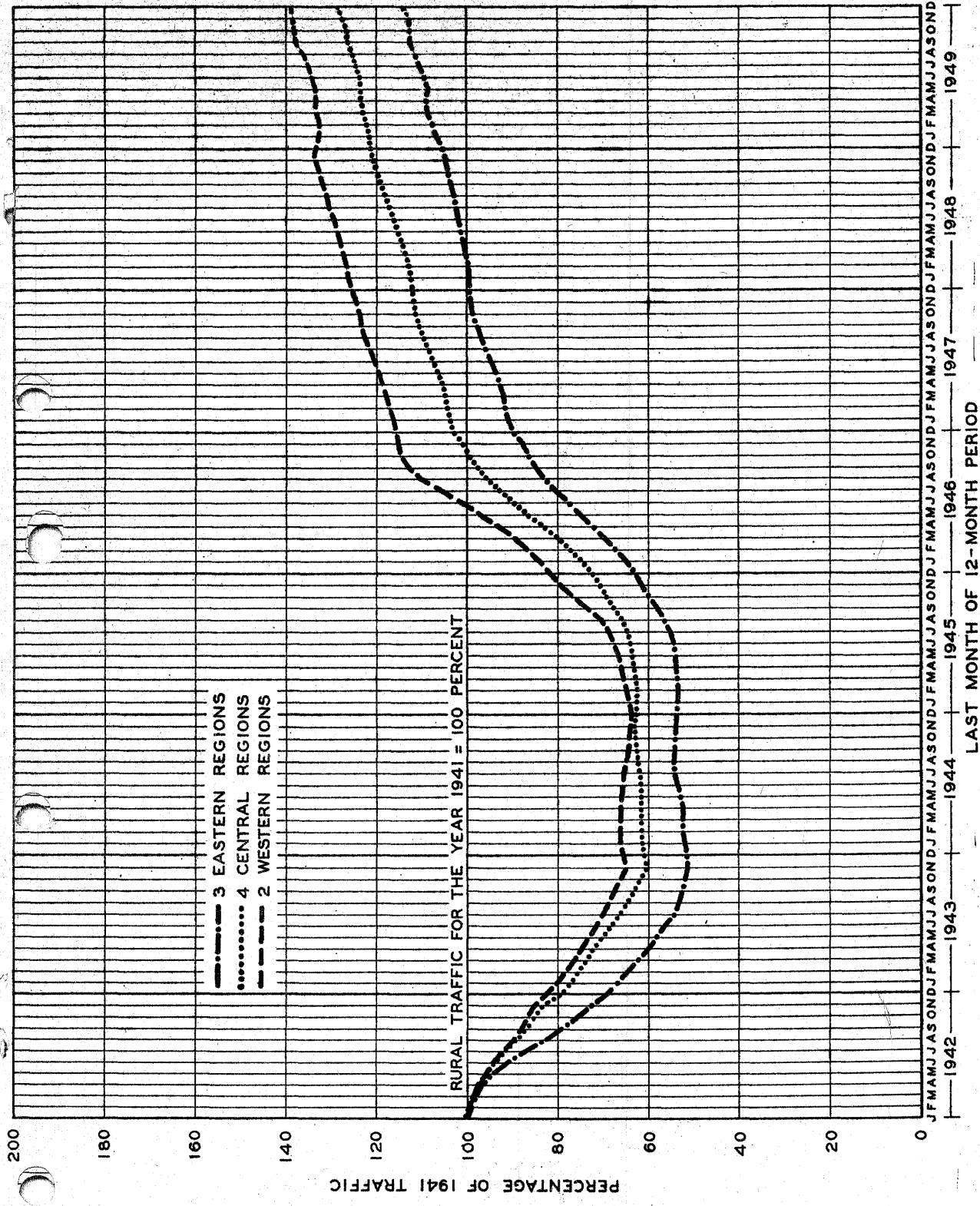


FIGURE I - TRAFFIC FOR YEAR ENDING EACH MONTH 1942 TO DATE AS A PERCENTAGE OF TRAFFIC FOR THE CALENDAR YEAR 1941 BY GEOGRAPHIC REGIONS

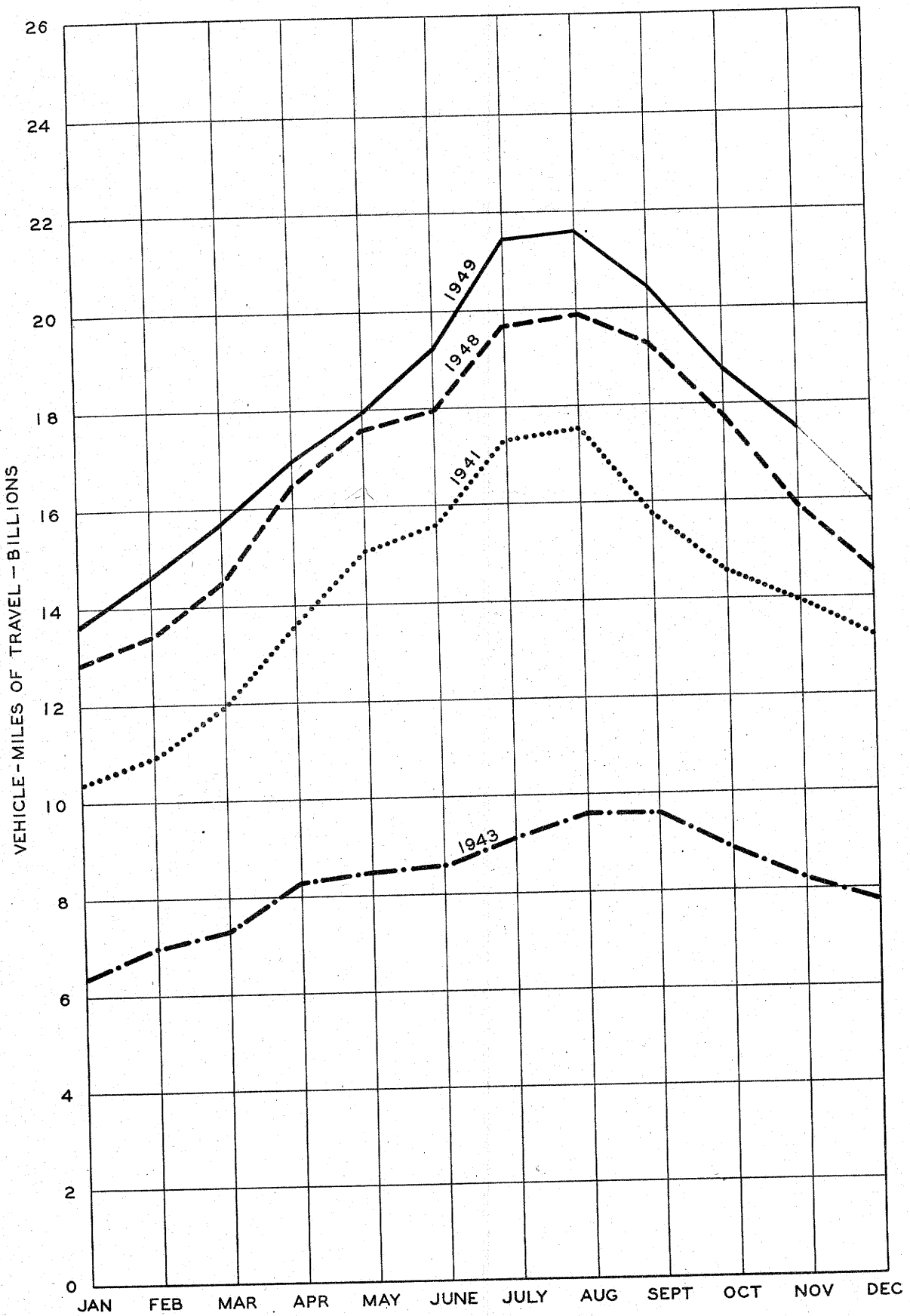


FIGURE 3 - VEHICLE-MILES OF TRAVEL ON ALL RURAL ROADS IN 1941, 1943, 1948 AND 1949

