

Recd
4/18/56

TRAFFIC VOLUME TRENDS

Washington, D. C.

February 1956

SUMMARY OF MOTOR-VEHICLE TRAVEL IN FEBRUARY (PRELIMINARY) AND JANUARY (REVISED)

Class of road:	Preliminary data for February 1956			Revised data for January 1956		
	Vehicle-miles (millions)		Percent- age change	Vehicle-miles (millions)		Percent- age change
	1955	1956		1955	1956	
Main rural roads.....	14,408	15,220	+5.6	15,579	16,269	+4.4
Local rural roads.....	6,621	7,019	+6.0	7,318	7,637	+4.4
All rural roads.....	21,029	22,239	+5.8	22,897	23,906	+4.4
City streets.....	+3.9	+2.9
All roads and streets....	+4.9	+3.7
By region (main rural only):						
Eastern regions.....	4,854	5,270	+8.6	5,149	5,405	+5.0
Central regions.....	7,029	7,385	+5.1	7,724	7,996	+3.5
Western regions.....	2,525	2,565	+1.6	2,706	2,868	+6.0

Table 1.—FEBRUARY 1956 MOTOR VEHICLE TRAVEL (PRELIMINARY)
Summary of Automatic Traffic Recorder Data¹

State	Number of stations	Percentage change from February 1955	State	Number of stations	Percentage change from February 1955
Alabama.....	8	+9.4	Nebraska.....	12	+10.5
Arizona.....	9	+7.5	Nevada.....	20	-6.0
Arkansas.....	22	-0.9	New Hampshire.....	12	+10.9
California.....	+5.2	New Jersey.....	6	+8.1
Colorado.....	20	+3.5	New Mexico.....	26	-0.2
Connecticut.....	18	+3.7	New York.....
Delaware.....	1	+15.8	North Carolina.....	30	+9.5
Florida.....	North Dakota.....	17	+6.4
Georgia.....	Ohio.....	19	+3.4
Idaho.....	9	-4.5	Oklahoma.....	20	-1.7
Illinois.....	5	+3.9	Oregon.....	27	-6.3
Indiana.....	21	+2.2	Pennsylvania.....	52	+12.6
Iowa.....	Rhode Island.....	1	+15.9
Kansas.....	14	-2.0	South Carolina.....	9	+3.4
Kentucky.....	14	+10.7	South Dakota.....
Louisiana.....	39	+6.6	Tennessee.....
Maine.....	8	-0.7	Texas.....	78	+0.8
Maryland.....	24	+13.0	Utah.....	13	+4.5
Massachusetts.....	8	+4.7	Vermont.....	7	+12.2
Michigan.....	28	+3.8	Virginia.....	+3.9
Minnesota.....	27	+14.1	Washington.....	13	-11.8
Mississippi.....	West Virginia.....	26	+3.7
Missouri.....	19	+3.2	Wisconsin.....	15	+8.8
Montana.....	18	+5.8	Wyoming.....	22	+19.8

¹Main rural roads only.
Comm—DC—47013

FOR OFFICIAL DISTRIBUTION

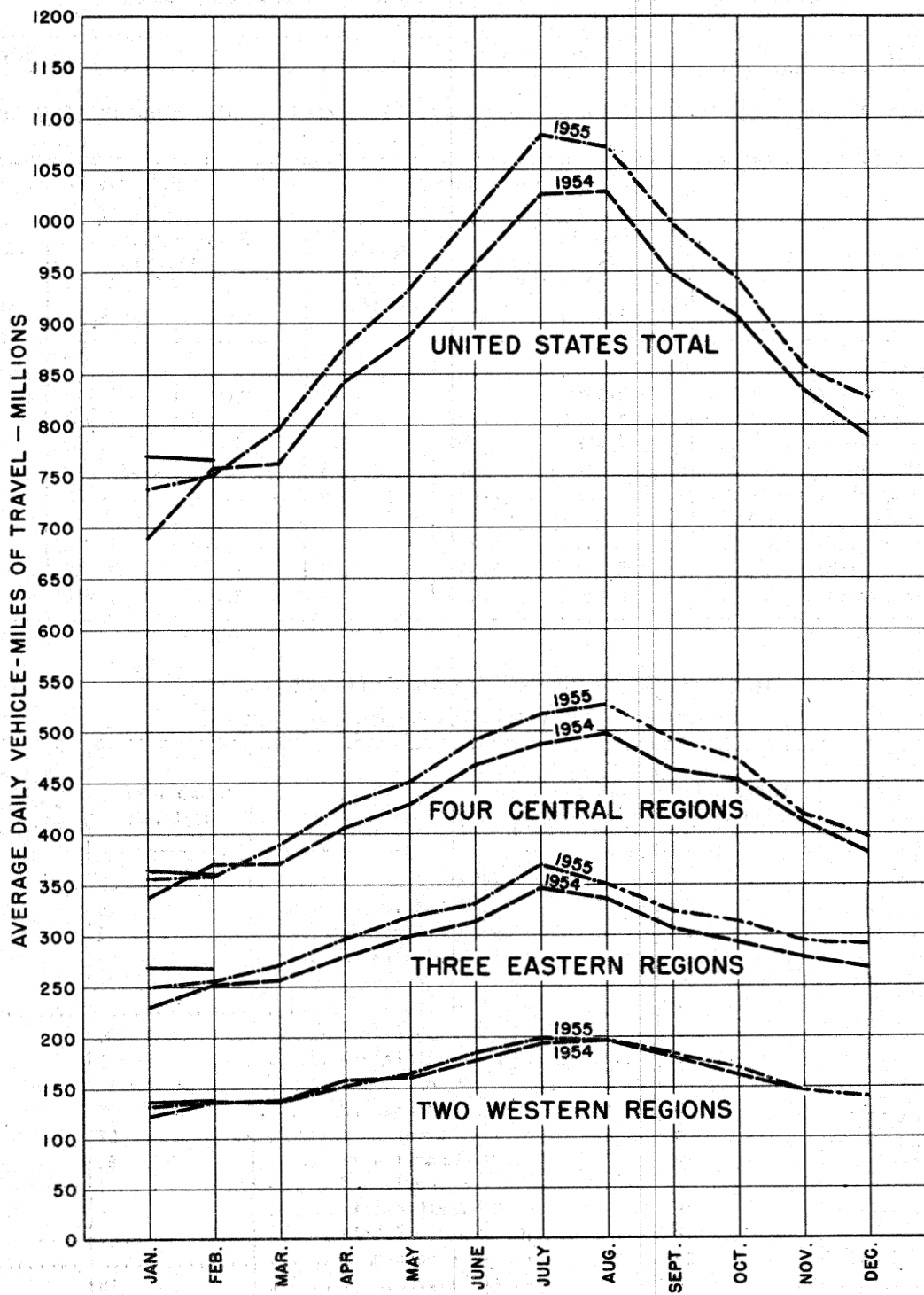


FIGURE 1 - TRAVEL ON ALL RURAL ROADS, BY MONTHS

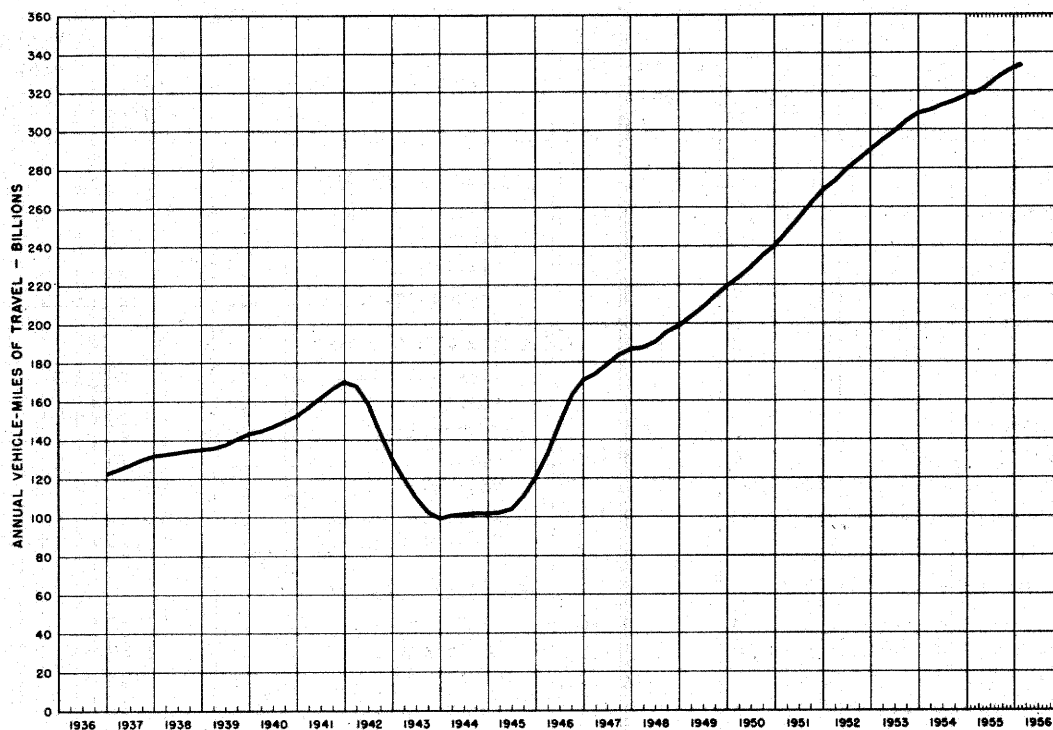


FIGURE 2 - TRAVEL ON ALL RURAL ROADS BY 12-MONTH PERIODS ENDING EACH MONTH, IN VEHICLE-MILES

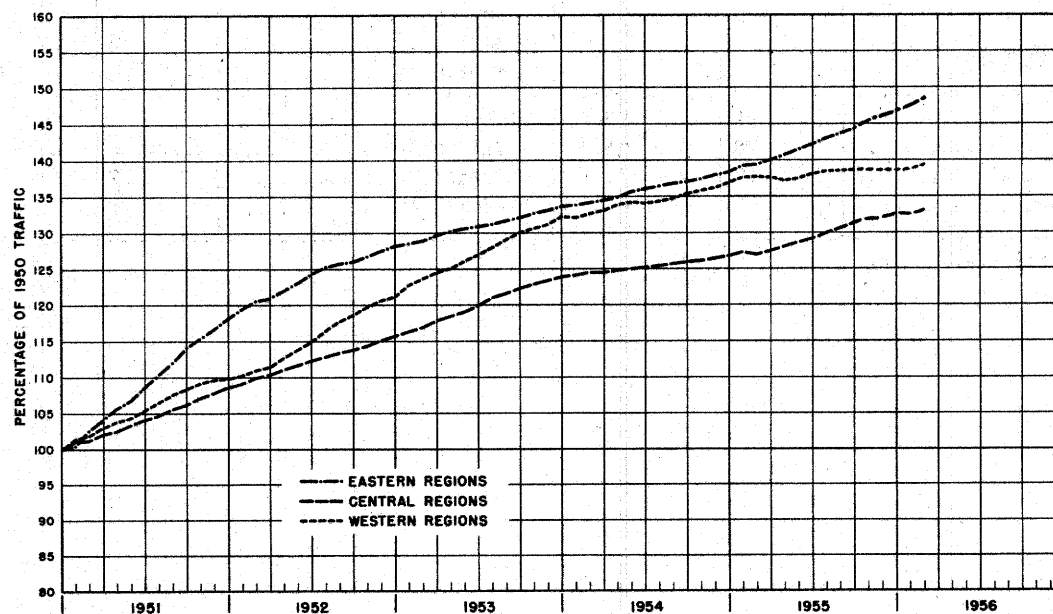


FIGURE 3 - TRAVEL ON ALL RURAL ROADS BY 12-MONTH PERIODS ENDING EACH MONTH, AS A PERCENTAGE OF TRAFFIC IN THE CALENDAR YEAR 1950

Table 2.—JANUARY 1956 MOTOR VEHICLE TRAVEL (Revised)

Summary of Automatic Traffic Recorder Data¹

Region and state	Number of stations	Percentage change from January 1955	Region and state	Number of stations	Percentage change from January 1955
NEW ENGLAND:			EAST SOUTH CENTRAL:		
Connecticut.....	17	- 2.0	Alabama.....	7	+ 6.6
Maine.....	7	+ 2.2	Kentucky.....	14	+ 6.1
Massachusetts.....	11	+13.7	Mississippi.....	36	- 0.6
New Hampshire.....	15	+ 1.2	Tennessee.....	20	+ 4.0
Rhode Island.....	4	+26.8			
Vermont.....	13	+10.2	WEST NORTH CENTRAL:		
			Iowa.....	26	+ 1.7
MIDDLE ATLANTIC:			Kansas.....	51	- 0.4
New Jersey.....	6	+ 5.3	Minnesota.....	27	+ 3.2
New York.....			Missouri.....	26	+ 0.5
Pennsylvania.....	52	+ 3.5	Nebraska.....		- 2.9
			North Dakota.....		- 3.3
SOUTH ATLANTIC (North):			South Dakota.....	28	- 3.5
Delaware.....	8	+ 4.0			
Maryland.....	28	+ 1.9	WEST SOUTH CENTRAL:		
Virginia.....		+ 4.4	Arkansas.....	21	- 2.7
West Virginia.....	27	+ 3.2	Louisiana.....	39	+ 7.9
			Oklahoma.....	21	- 1.6
SOUTH ATLANTIC (South):			Texas.....	78	+ 3.6
Florida.....	44	+ 7.2			
Georgia.....	25	+ 3.6	MOUNTAIN:		
North Carolina.....	30	+10.1	Arizona.....		+13.5
South Carolina.....	8	+ 6.8	Colorado.....	20	+10.5
			Idaho.....	9	+ 2.9
EAST NORTH CENTRAL:			Montana.....	18	- 2.7
Illinois.....	5	+ 9.5	Nevada.....	20	+ 3.5
Indiana.....	21	+ 5.8	New Mexico.....		+ 8.9
Michigan.....	28	+ 5.6	Utah.....	12	+17.1
Ohio.....	19	+ 1.8	Wyoming.....	24	+11.5
Wisconsin.....	15	+ 7.9			
			PACIFIC:		
			California.....		+ 7.8
			Oregon.....	27	- 0.4
			Washington.....	13	- 8.0

¹Main rural roads only.