

*M. Hitchcock*

PUBLIC ROADS ADMINISTRATION  
FEDERAL WORKS AGENCY

INFORMATIONAL MEMORANDUM NO. 81

DATE: FEBRUARY 28, 1945

SUBJECT: TRAFFIC VOLUME TRENDS

The preliminary data for January 1945 indicated that traffic in the eastern and central portions of the country was considerably below the estimates for that month in 1944. This decrease probably was caused largely by excessive snow which fell during this month in several sections of the northern portion of the country. Traffic in the New England States was 11.5 percent below the estimates for January 1944; that in the Middle Atlantic States was 22.8 percent lower; while traffic in the East North Central Region was 13.4 percent under the previous year's figures. Similar decreases were found in all States in the West North Central Region and others east of the Mississippi and north of the northern boundary of Alabama, Georgia and South Carolina. Although a considerable increase of 9.9 percent was found in the two western regions, traffic in the entire country decreased 6.0 percent.

Comparisons of city traffic in January 1945 with that in January 1944 are as follows:

3 stations in Detroit, Michigan-10.8 percent  
10 stations in Washington, D. C.- 4.0 percent

H. S. FAIRBANK, DEPUTY COMMISSIONER,  
PUBLIC ROADS ADMINISTRATION

Attachments.

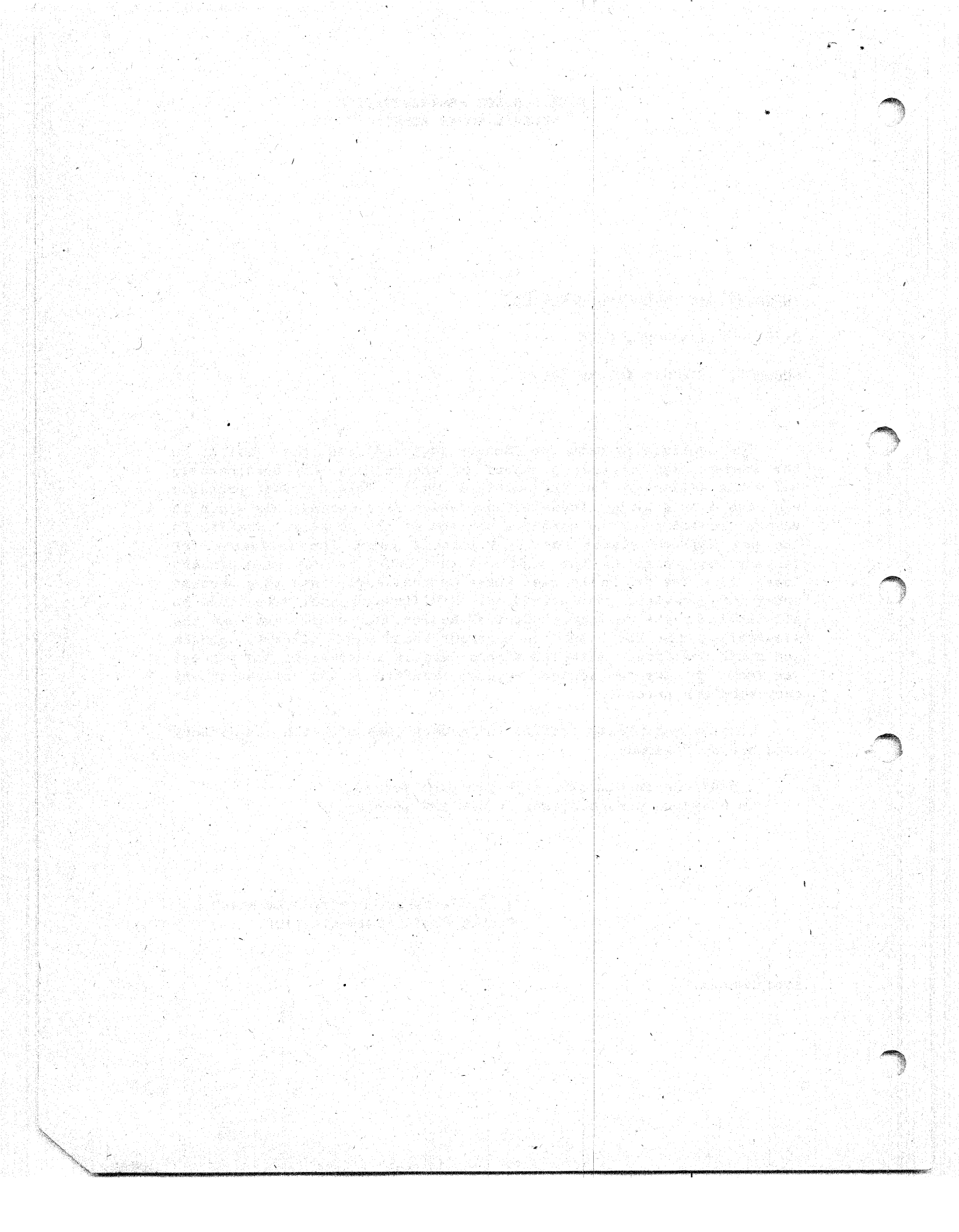


TABLE 1.--PRELIMINARY SUMMARY OF AUTOMATIC TRAFFIC RECORDER DATA FOR  
JANUARY 1945 INCLUDING 606 STATIONS IN 43 STATES<sup>1</sup>

Type of highway and State	Number of stations	Percentage change from Jan. 1944	Type of highway and State	Number of stations	Percentage change from Jan. 1944
<b>STATE HIGHWAYS</b>			<b>STATE HIGHWAYS (Continued)</b>		
Alabama	8	+ 3.5	Washington	9	+ 2.8
Arizona	5	+ 7.3	West Virginia	11	- 8.9
Arkansas	18	+13.3	Wisconsin	9	-10.6
California	8	+17.3	Wyoming	5	+16.6
Colorado	6	+13.6			
Connecticut	17	-13.7	<b>TOTAL - 43 STATES</b>	<b>567</b>	<b>- 4.8</b>
Delaware	5	- 8.8	<b>LOCAL HIGHWAYS</b>		
Florida	19	+ 7.0	Alabama	1	+13.1
Georgia	7	+ 0.2	Connecticut	3	-20.6
Idaho	8	+ 9.7	Delaware	2	+22.0
Illinois	4	- 5.4	Georgia	4	- 2.9
Indiana	21	-14.1	Indiana	2	-25.2
Iowa	26	-10.7	Iowa	9	- 9.1
Kansas	12	- 0.5	Maryland	1	- 8.4
Kentucky	12	-10.3	Massachusetts	1	-13.9
Maine	10	- 8.2	Michigan	2	+ 4.5
Maryland	17	-14.2	Missouri	2	-16.1
Massachusetts	7	-10.0	Montana	2	+ 5.4
Michigan	26	-14.8	Nebraska	1	+ 6.8
Missouri	25	- 9.0	North Dakota	2	-14.4
Montana	12	- 6.2	Ohio	2	-29.7
Nebraska	10	- 4.5	Oregon	1	+12.3
Nevada	16	- 7.0	Rhode Island	1	-40.0
New Mexico	13	+ 9.7	Tennessee	2	+ 7.2
New York	7	-12.7	Wisconsin	1	-16.6
North Carolina	20	- 5.6			
North Dakota	11	0.0	<b>TOTAL - 18 STATES</b>	<b>39</b>	<b>- 9.0</b>
Ohio	19	-13.1	<b>ALL HIGHWAYS</b>		
Oklahoma	20	+ 5.5	<b>43 STATES</b>	<b>606</b>	<b>- 6.0</b>
Oregon	3	+13.7	<b>3 EASTERN REGIONS</b>		
Pennsylvania	29	-26.1		<b>178</b>	<b>-13.7</b>
Rhode Island	3	- 4.9	<b>4 CENTRAL REGIONS</b>		
South Carolina	2	+ 0.2		<b>330</b>	<b>- 6.8</b>
South Dakota	10	- 5.2	<b>2 WESTERN REGIONS</b>		
Tennessee	3	-32.5		<b>98</b>	<b>+ 9.9</b>
Texas	72	+ 4.0			
Utah	10	+18.6			
Vermont	7	- 6.4			
Virginia	5	-14.0			

<sup>1</sup>Includes all States except Louisiana, Minnesota, Mississippi, New Hampshire, and New Jersey.

Date	Description	Debit	Credit	Balance
1900				
1901				
1902				
1903				
1904				
1905				
1906				
1907				
1908				
1909				
1910				
1911				
1912				
1913				
1914				
1915				
1916				
1917				
1918				
1919				
1920				
1921				
1922				
1923				
1924				
1925				
1926				
1927				
1928				
1929				
1930				
1931				
1932				
1933				
1934				
1935				
1936				
1937				
1938				
1939				
1940				
1941				
1942				
1943				
1944				
1945				
1946				
1947				
1948				
1949				
1950				
1951				
1952				
1953				
1954				
1955				
1956				
1957				
1958				
1959				
1960				
1961				
1962				
1963				
1964				
1965				
1966				
1967				
1968				
1969				
1970				
1971				
1972				
1973				
1974				
1975				
1976				
1977				
1978				
1979				
1980				
1981				
1982				
1983				
1984				
1985				
1986				
1987				
1988				
1989				
1990				
1991				
1992				
1993				
1994				
1995				
1996				
1997				
1998				
1999				
2000				
2001				
2002				
2003				
2004				
2005				
2006				
2007				
2008				
2009				
2010				
2011				
2012				
2013				
2014				
2015				
2016				
2017				
2018				
2019				
2020				
2021				
2022				
2023				
2024				
2025				
2026				
2027				
2028				
2029				
2030				
2031				
2032				
2033				
2034				
2035				
2036				
2037				
2038				
2039				
2040				
2041				
2042				
2043				
2044				
2045				
2046				
2047				
2048				
2049				
2050				
2051				
2052				
2053				
2054				
2055				
2056				
2057				
2058				
2059				
2060				
2061				
2062				
2063				
2064				
2065				
2066				
2067				
2068				
2069				
2070				
2071				
2072				
2073				
2074				
2075				
2076				
2077				
2078				
2079				
2080				
2081				
2082				
2083				
2084				
2085				
2086				
2087				
2088				
2089				
2090				
2091				
2092				
2093				
2094				
2095				
2096				
2097				
2098				
2099				
2100				

TABLE 2.--REVISED SUMMARY OF AUTOMATIC TRAFFIC RECORDER DATA FOR  
DECEMBER 1944 INCLUDING 636 STATIONS IN 46 STATES<sup>1</sup>

Region and State	Number of stations	Percentage change from Dec. 1943	Region and State	Number of stations	Percentage change from Dec. 1943
<b>NEW ENGLAND</b>			<b>EAST SOUTH CENTRAL</b>		
Connecticut	20	- 7.6	Alabama	9	+ 2.9
Maine	10	0.0	Kentucky	12	- 7.0
Massachusetts	9	- 4.0	Mississippi	10	+ 7.6
New Hampshire	15	- 1.7	Tennessee	4	-47.7
Rhode Island	4	+ 2.0	Subtotal	35	- 4.3
Vermont	9	+ 2.7	<b>WEST SOUTH CENTRAL</b>		
Subtotal	67	- 4.3	Arkansas	20	+ 5.6
<b>MIDDLE ATLANTIC</b>			Louisiana <sup>3</sup>	8	- 9.4
New York	13	- 7.7	Oklahoma	20	+ 2.7
Pennsylvania	29	-17.5	Texas	72	+ 1.8
Subtotal	42	-13.6	Subtotal	120	+ 0.9
<b>SOUTH ATLANTIC</b>			<b>MOUNTAIN</b>		
Delaware	7	+ 1.0	Arizona	5	+ 3.8
Maryland	18	- 8.2	Colorado	6	+13.3
Virginia	3	- 8.3	Idaho	7	- 1.9
West Virginia	11	-17.8	Montana	14	- 3.1
Subtotal north portion	39	- 8.8	Nevada	12	- 8.2
Florida	17	+10.2	New Mexico	13	+12.8
Georgia	9	+ 1.3	Utah	8	- 8.7
North Carolina	20	- 3.0	Wyoming	4	+ 5.6
South Carolina	3	+ 1.6	Subtotal	69	+ 3.3
Subtotal south portion	49	+ 2.3	<b>PACIFIC</b>		
Subtotal region	88	- 2.6	California	9	+ 3.6
<b>EAST NORTH CENTRAL</b>			Oregon	4	- 2.4
Illinois	4	-12.6	Washington	9	- 2.7
Indiana	23	-13.0	Subtotal	22	+ 0.5
Michigan	28	-12.4	<b>TOTAL ALL STATES<sup>2</sup></b>	<b>636</b>	<b>- 5.6</b>
Ohio	21	-15.0	<b>STATE HIGHWAYS<sup>2</sup></b>	<b>597</b>	<b>- 5.2</b>
Wisconsin	11	- 5.9	<b>LOCAL HIGHWAYS</b>	<b>39</b>	<b>- 5.7</b>
Subtotal	87	-12.4	<b>3 EASTERN REGIONS</b>	<b>197</b>	<b>- 7.2</b>
<b>WEST NORTH CENTRAL</b>			<b>4 CENTRAL REGIONS</b>	<b>348</b>	<b>- 6.5</b>
Iowa	35	- 9.6	<b>2 WESTERN REGIONS</b>	<b>91</b>	<b>+ 1.5</b>
Kansas	9	- 5.2			
Missouri	27	- 8.5			
Nebraska	12	- 3.7			
North Dakota	13	+ 8.8			
South Dakota	10	+ 1.0			
Subtotal	108	- 6.5			

<sup>1</sup>Combined State and local highways.

<sup>2</sup>Includes all States except the following: Minnesota and New Jersey.

<sup>3</sup>Abnormal conditions in 1943 or 1944 affected one count in Louisiana, excluding station 23, there is an increase of 3.0 percent.

The page contains extremely faint, illegible text that appears to be bleed-through from the reverse side of the paper. The text is scattered across the page and is not readable.

TABLE 3.—NUMBER OF VEHICLES, CLASSIFIED BY TYPES, USING TOLL FACILITIES AND DRAWBRIDGES IN JANUARY 1945 COMPARED WITH THOSE IN JANUARY 1944 AND 1941.

Facilities	1945			Percentage change from 1944			Percentage change from 1941		
	Total	Passenger cars	Trucks and busses	Total	Passenger cars	Trucks and busses	Total	Passenger cars	Trucks and busses
<b>THREE EASTERN REGIONS</b>									
4 in the New England States	28,348	24,452	3,896	-12.6	- 8.9	-31.3	-15.8	-20.1	+27.4
10 in the Middle Atlantic States	2,923,878	2,124,066	799,812	-13.2	-18.7	+ 5.6	-21.0	-28.7	+10.9
Fleetwood Viaduct, Westchester County, New York	88,445	88,445	---	-24.1	-24.1	---	-67.6	-67.6	---
Pennsylvania Turnpike	56,588	31,842	24,746	-16.2	-27.4	+ 4.5	-42.0	-59.4	+30.2
3 in the South Atlantic States	210,355	149,828	60,527	-14.6	-14.8	-14.2	-18.6	-26.0	+ 8.3
TOTAL - 22 facilities in the Eastern States <sup>1</sup>	3,307,614	2,418,633	888,981	-13.7	-18.7	+ 3.7	-24.2	-32.1	+11.2
TOTAL - 26 facilities in the Eastern States	3,543,307	2,612,258	931,049	-13.1	-17.9	+ 3.8			
<b>FOUR CENTRAL REGIONS</b>									
5 on the Great Lakes Canadian Border <sup>2</sup>	117,695	99,600	18,095	-19.8	-24.3	+20.1	+ 2.1	-0.03	+15.9
2 in the Great Lakes Region	30,469	15,384	15,085	-35.3	-48.0	-13.6	-47.0	-56.6	-31.6
Subtotal - 7 facilities	148,164	114,984	33,180	-28.5	-28.7	+ 2.0	-14.2	-14.8	-11.1
8 on the Ohio River <sup>3</sup>	285,194	217,060	68,134	-14.8	-16.7	- 8.0	-24.7	-27.4	-14.4
9 in Kentucky	101,156	75,648	25,508	- 8.8	-11.4	- 0.1	+ 1.4	- 4.4	+23.7
Subtotal - 17 facilities	386,350	292,708	93,642	-13.3	-15.4	- 5.0	-19.2	-22.6	- 6.6
9 on the Mississippi and St. Croix Rivers St. Louis and north	314,637	248,552	66,085	-15.6	-18.2	- 3.9	- 8.2	-11.1	+ 4.2
Subtotal - 9 facilities	314,637	248,552	66,085	-15.6	-18.2	- 3.9	- 8.2	-11.1	+ 4.2
4 on the Missouri River	146,370	92,642	53,728	- 8.7	-10.2	- 6.0	+14.5	+ 5.9	+33.0
2 in the Missouri River area	1,911	1,550	361	- 7.4	+ 1.4	-32.6	-38.1	-32.6	-54.4
Subtotal - 6 facilities	148,281	94,192	54,089	- 8.7	-10.0	- 6.3	+13.2	+ 4.9	+31.3
TOTAL - 39 facilities in the Central States <sup>2</sup>	997,432	750,436	246,996	-15.1	-18.1	- 4.5	-11.3	-15.0	+ 1.9
TOTAL - 47 facilities in the Central States	1,187,117	893,485	293,632	-13.5	-16.6	- 3.1			
<b>TWO WESTERN REGIONS</b>									
4 in California	2,033,387	1,768,526	265,361	+ 8.0	+ 7.6	+10.4	+ 7.7	+ 1.4	+83.9
5 in the Oregon-Washington area	190,613	159,675	30,938	+11.4	+11.9	+ 9.1	+45.1	+38.8	+89.6
TOTAL - 9 facilities in the Western States	2,224,500	1,928,201	296,299	+ 8.3	+ 8.0	+10.8	+10.2	+ 3.8	+84.5
TOTAL - 69 facilities in the United States <sup>1</sup>	6,529,546	5,097,270	1,432,276	- 7.5	-10.2	+ 3.4	-13.0	-19.2	+19.1
TOTAL - 82 facilities in the United States	6,954,924	5,433,944	1,520,980	- 7.8	-10.0	+ 3.6			
3 facilities reporting only total traffic	116,590			-15.1					
32 drawbridges in Eastern North Carolina (not toll) based on the total of one 3-hour week-day and one 6-hour Saturday count at each bridge.	33,037	23,856	9,181	- 1.3	- 2.1	+ 0.8	- 1.5	- 1.4	+ 7.7

<sup>1</sup>These facilities have comparative data for 1945, 1944, and 1941 and are included in the larger total below.

<sup>2</sup>Three of these facilities are in Western New York and therefore are related to similar facilities in the Central States.

<sup>3</sup>Four of these facilities are between Ohio and West Virginia.

[Faint, illegible text covering the page]



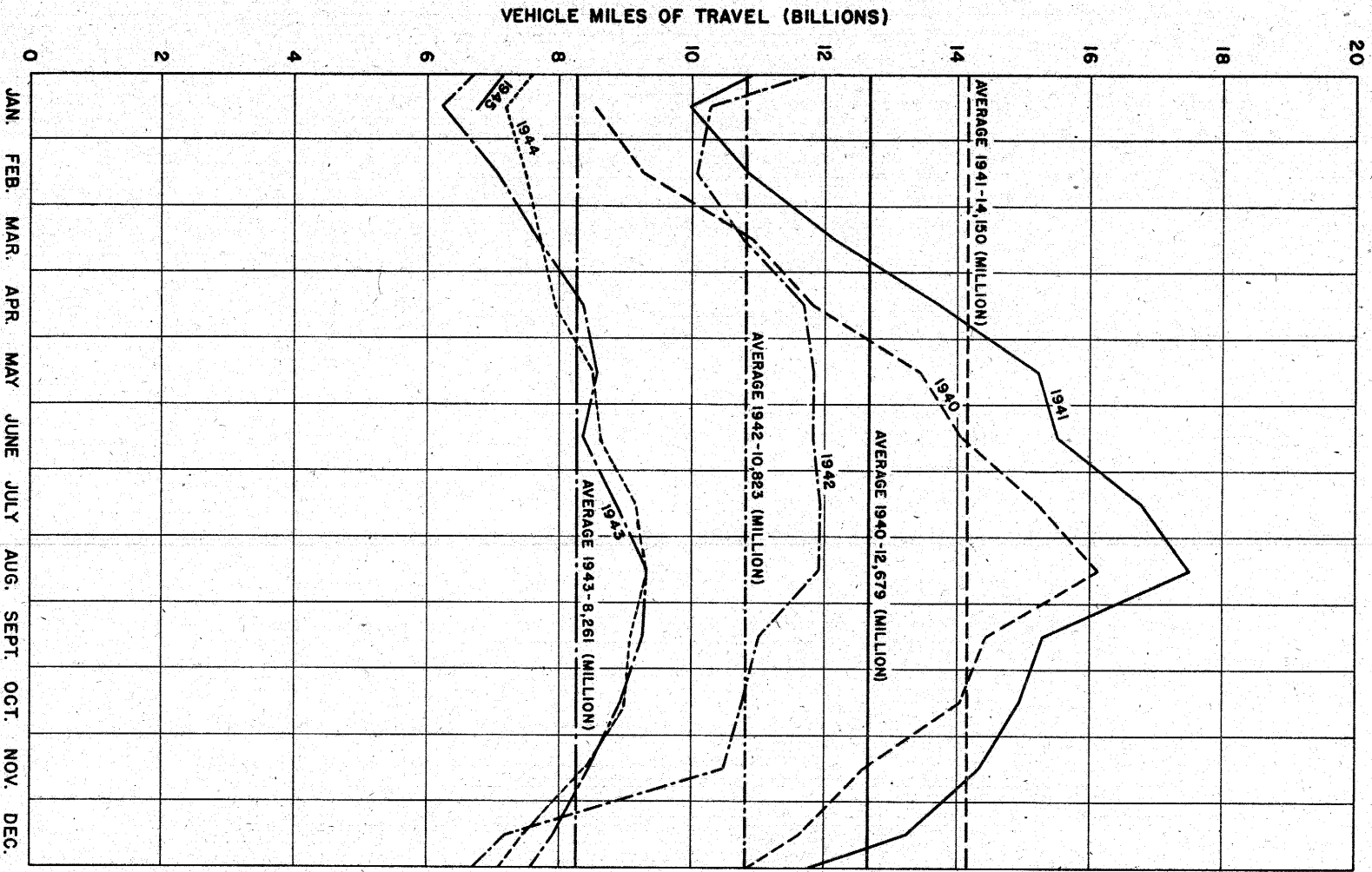
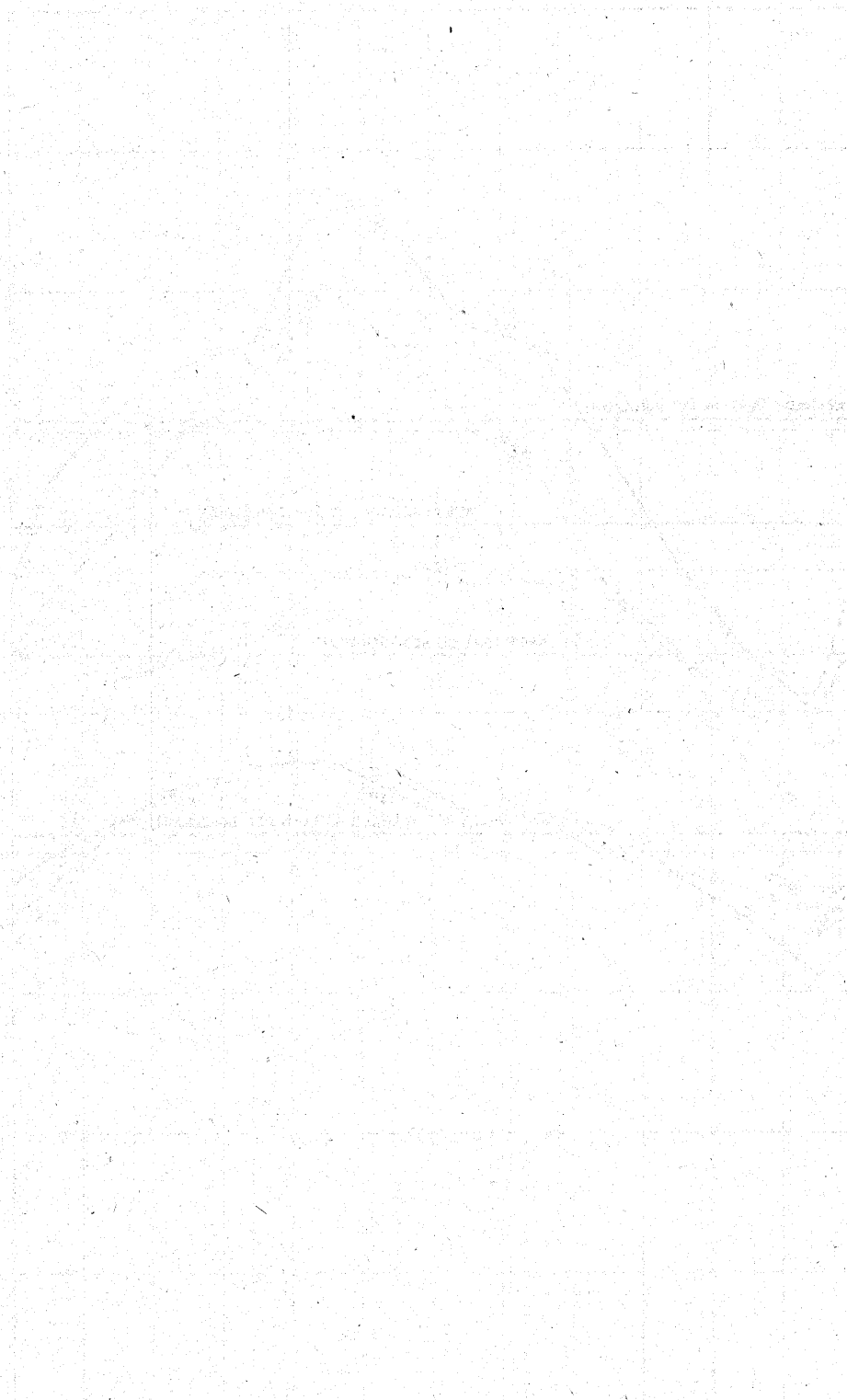


FIGURE I. VEHICLE MILES OF TRAVEL ON ALL RURAL ROADS 1940 TO 1945 BY MONTHS



Vertical text on the right side of the page, possibly a page number or a reference code.

IN THE OFFICE OF THE ATTORNEY GENERAL  
STATE OF TEXAS

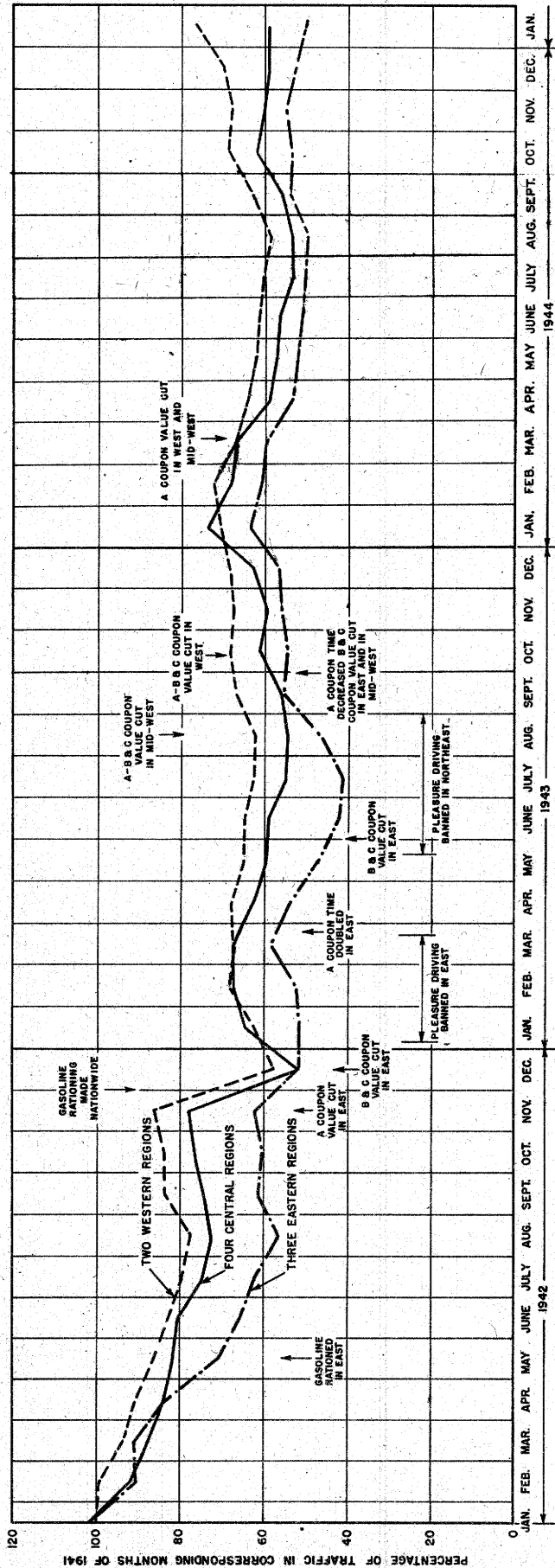


FIGURE 2. PERCENTAGE RELATIONS OF RURAL TRAFFIC IN MONTHS OF 1942, 1943, 1944 AND 1945 WITH THAT IN CORRESPONDING MONTHS OF 1941

