



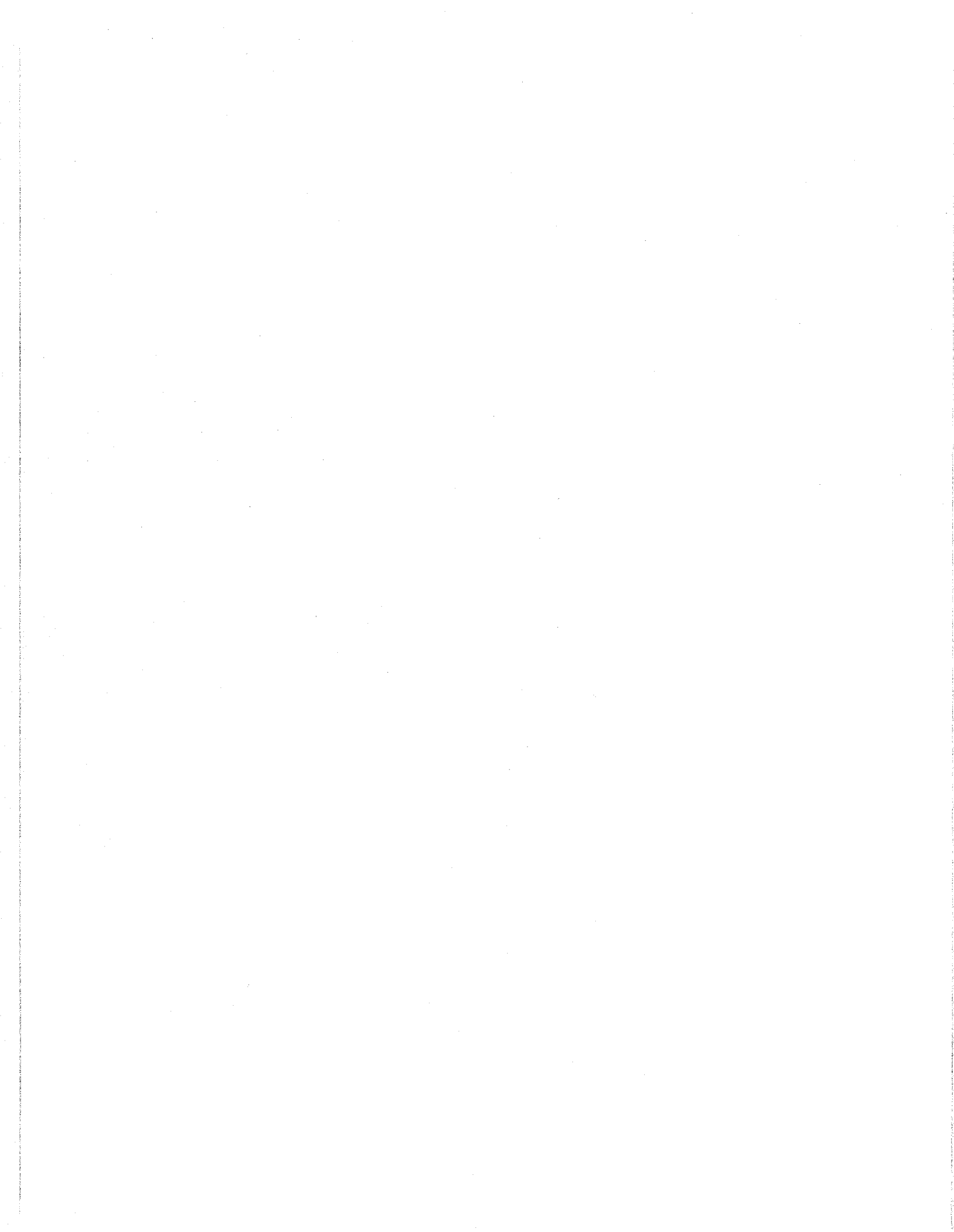
U.S. Department
of Transportation
**Federal Highway
Administration**

TOLL FACILITIES IN THE UNITED STATES

BRIDGES - ROADS - TUNNELS - FERRIES

February 1991

Publication No: FHWA-PL-91-009



TOLL FACILITIES IN THE UNITED STATES

BRIDGES - ROADS - TUNNELS - FERRIES

February 1991

TABLE OF CONTENTS**TABLE T-1**

	<u>PART</u>	<u>PAGE</u>
Interstate Toll Bridges and Toll Tunnels in the United States	1	1
Non-Interstate Toll Bridges and Toll Tunnels in the United States	2	3
Interstate Toll Roads in the United States	3	9
Non-Interstate Toll Roads in the United States	4	12
Vehicular Toll Ferries in the United States	5	16

TABLE T-2

	<u>PAGE</u>
Other Suggested Toll Facilities	21

PREFACE

Selected data on highway toll facilities in the United States are contained in Table T-1 of this report based on a survey of facilities in operation, financed, or under construction as of January 1, 1990. The data include information such as the name, financing or operating authority, location and termini, feature crossed, length, and road system for toll bridges, roads, tunnels, and ferries that connect highways. For toll facilities located on the National System of Interstate and Defense Highways, the Interstate route numbers are included in Table T-1, Parts 1 & 3. A functional system code has also been included for toll bridges, roads, and tunnels in Table T-1, Parts 2 & 4. Toll ferries are identified in Table T-1, Part 5.

Table T-2 contains a list of those projects under serious consideration as toll facilities, awaiting completion of financing arrangements, or proposed as new toll facilities that are being studied for financial and operational feasibility. A few of these facilities may already be in operation as nontoll.

This report is not intended to be a complete reference on toll facilities nor is it intended to duplicate data that are published elsewhere. Nearly all of the publicly owned toll authorities publish monthly and/or quarterly, semiannual, and annual reports that contain such information as width and clearance on bridges, type of structure, road limits, year built or put in service, traffic volumes, cost, toll rates, etc. On ferries, information such as seasonal or hourly operating schedules has been included when easily obtainable, but complete schedule information and information on number and capacity of boats in operation may be obtained directly from the operating authority. Information on revenues, expenditures, and outstanding indebtedness for public toll facilities is contained in Highway Statistics, which is published annually by the Federal Highway Administration.

Other organizations also compile data relating to toll facilities. The International Bridge, Tunnel and Turnpike Association, Inc., 2120 L Street, NW, Suite 305, Washington, DC 20037, maintains an address directory of its membership and serves as an information clearing house and research center. It also conducts surveys and studies and publishes a variety of reports, statistics, and analyses. The American Automobile Association, 8111 Gatehouse Road, Falls Church, Virginia 22042, compiles a directory of toll facilities containing such current information as rates, load limits, frequency of service, etc.

The data for this report were obtained by the field offices of the Federal Highway Administration in cooperation with the State highway agencies. The material was collected and organized by the Office of Highway Information Management. Comments or additional information are welcomed and may be submitted to the Highway System Performance Division, HPM-20, Washington, D.C. 20590.

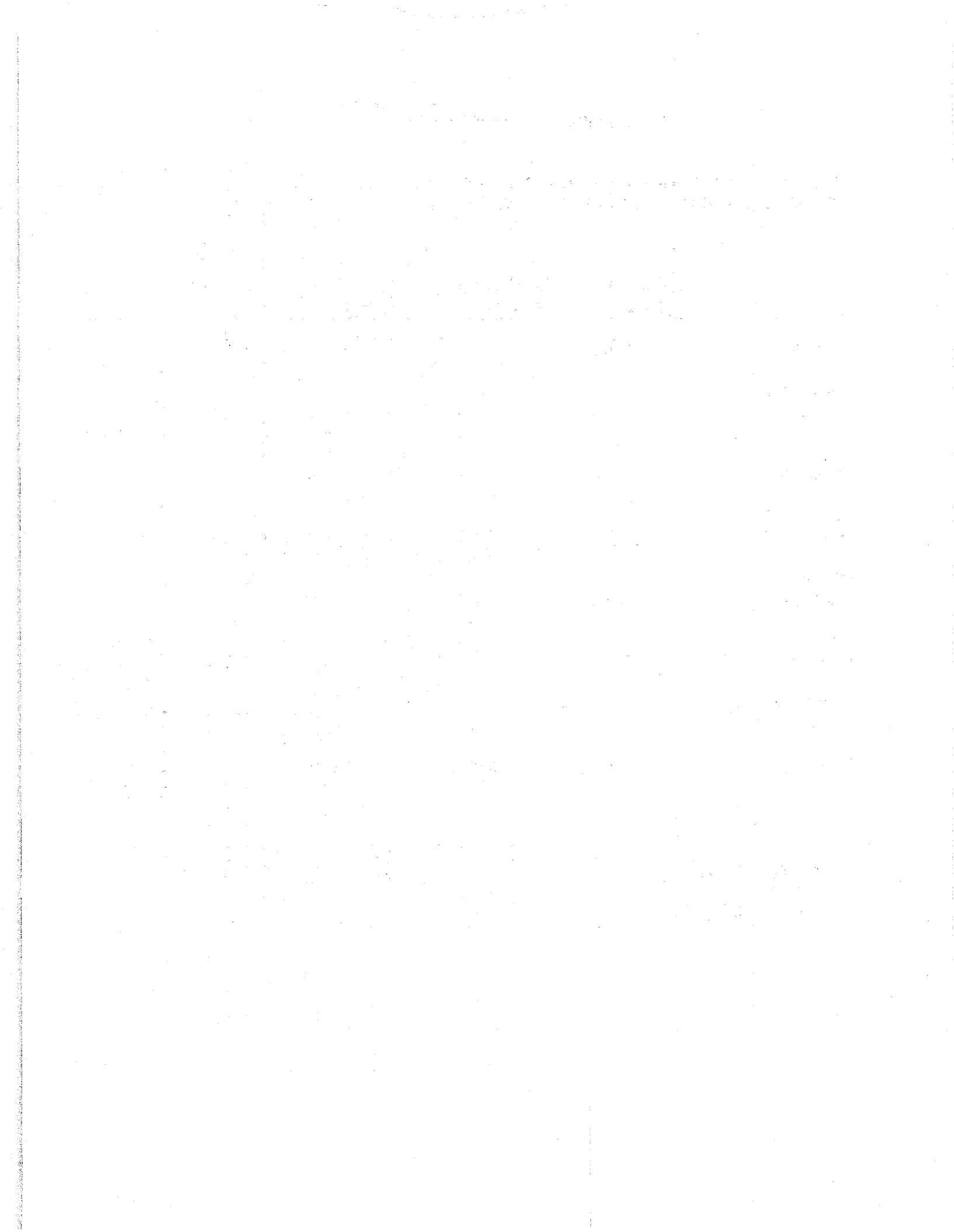
FACT SHEET

TOTAL TOLL ROAD, TOLL BRIDGE, AND TOLL TUNNEL MILEAGE IN
THE UNITED STATES IN OPERATION AS OF JANUARY 1, 1990.

<u>ROAD SYSTEM</u>	<u>GRAND TOTAL</u>	<u>LESS NONTOLL SECTIONS</u>	<u>NET TOLL MILEAGE</u>
Interstate	2748.6	74.6	2674.0
Federal-Aid Primary	636.0	157.9	478.1
Federal-Aid Secondary*	1.3	0.0	1.3
Federal-Aid Secondary**	6.6	0.0	6.6
Other State Highways	1266.4	14.2	1252.2
Local Facilities	260.9	0.0	260.9
Federal-Aid Urban	<u>48.1</u>	<u>0.0</u>	<u>48.1</u>
Total	4967.9	246.7	4721.2

* On-State Highways

** Off-State Highways



1

INTERSTATE TOLL BRIDGES AND TUNNELS IN THE UNITED STATES
(IN OPERATION, UNDER CONSTRUCTION, OR FINANCED AS OF JAN. 1, 1990)

TABLE T-1
PART 1
PAGE 1 OF 2

NAME OF FACILITY	FINANCING OR OPERATING AUTHORITY	LOCATION			LENGTH (MILES) 1/	AREA TYPE	INTER- STATE ROUTE	REMARKS
		FROM	BODY OF WATER CROSSED	TO				
CALIFORNIA								
S.F.-OAKLAND BAY (I-80)	CALIFORNIA TRANSPORTATION COMMISSION	SAN FRANCISCO, CA	SAN FRANCISCO BAY	OAKLAND, CA	6.1	URBAN	80	TOLL ONLY ON WESTBOUND ROADWAY
CARQUINEZ (2 BRIDGES)	CALIFORNIA TRANSPORTATION COMMISSION	CROCKETT, CA	CARQUINEZ STRAIT	VALLEJO, CA	1.8	URBAN	80	TOLL ONLY ON NORTHBOUND ROADWAY
MARTINEZ-BENICIA (I-80)	CALIFORNIA TRANSPORTATION COMMISSION	MARTINEZ, CA	CARQUINEZ STRAIT	BENICIA, CA	2.2	URBAN	880	TOLL ONLY ON NORTHBOUND ROADWAY
RICHMOND-SAN RAFAEL (I-580)	CALIFORNIA TRANSPORTATION COMMISSION	RICHMOND, CA	SAN FRANCISCO BAY	SAN RAFAEL, CA	4.7	URBAN	580	TOLL ONLY ON WESTBOUND ROADWAY
DELAWARE-NEW JERSEY								
DELAWARE MEMORIAL (I-295)	DELAWARE RIVER AND BAY AUTHORITY	NEW CASTLE, DE (2.4 MILES)	DELAWARE RIVER	DEEPWATER, NJ (1.1 MILES)	3.5	URBAN	295	TOLLS, BOTH WAYS
FLORIDA								
SUNSHINE SKYWAY	FLORIDA DEPT. OF TRANSPORTATION	ST. PETERSBURG, FL	LOWER TAMPA BAY	TERRA CEIA, FL	11.1	RURAL	75	TOLLS, BOTH WAYS
MARYLAND								
BALTIMORE HARBOR (2 TUBES) (I-895)	MARYLAND TRANSPORTATION AUTHORITY	EAST BALTIMORE, MD	PATAPSCO RIVER	ELKRIDGE, MD	18.8	URBAN	895	—TUNNEL—
FORT McHENRY (4 TUBES) (I-95)	MARYLAND TRANSPORTATION AUTHORITY	BALTIMORE, MD	PATAPSCO RIVER	BALTIMORE, MD	2.8	URBAN	95	—TUNNEL—
SUSQUEHANA	MARYLAND TRANSPORTATION AUTHORITY	MD. RT 165	SUSQUEHANA RIVER	MD. RT 275	4.0	RURAL	95	—BRIDGE—
MICHIGAN								
MACKINAC (I-75)	MICHIGAN DEPARTMENT OF TRANSPORTATION	MACKINAW CITY, MI	MACKINAC STRAITS	ST. IGNACE, MI	4.4	RURAL	75	
MICHIGAN-CANADA								
SAULT STE. MARIE (I-75)	INTERNATIONAL BRIDGE AUTHORITY OF MICHIGAN	SAULT STE. MARIE, MI (1.3 MILES)	ST. MARY'S RIVER	SAULT STE. MARIE, ONTARIO (1.1 MILES)	2.4	URBAN	75	(1.3 MILES WITHIN THE U.S.)
BLUE WATER BRIDGE (I-94)	MICHIGAN DEPARTMENT OF TRANSPORTATION	PORT HURON, MI (0.7 MILES)	ST. CLAIR RIVER	SARNIA, ONTARIO (0.8 MILES)	1.5	URBAN	94	(0.7 MILES WITHIN THE U.S.)
NEW JERSEY-NEW YORK								
GEORGE WASHINGTON (I-95)	PORT AUTHORITY OF NEW YORK AND NEW JERSEY	FT. LEE, NJ (1.2 MILES)	HUDSON RIVER	MANHATTAN, NY (0.4 MILES)	1.8	URBAN	95	TOLL ONLY ON EASTBOUND ROADWAY
GOETHALS (I-278)	PORT AUTHORITY OF NEW YORK AND NEW JERSEY	ELIZABETH, NJ (1.1 MILES)	ARTHUR KILL	HOWLAND HOOK, NY (1.0 MILES)	2.1	URBAN	278	TOLL ONLY ON EASTBOUND ROADWAY
HOLLAND (2 TUBES) (I-78)	PORT AUTHORITY OF NEW YORK AND NEW JERSEY	JERSEY CITY, NJ (1.0 MILES)	HUDSON RIVER	NEW YORK, NY (0.8 MILES)	1.8	URBAN	78	—TUNNEL— TOLL ONLY ON EASTBOUND ROADWAY

INTERSTATE TOLL BRIDGES AND TUNNELS IN THE UNITED STATES
(IN OPERATION, UNDER CONSTRUCTION, OR FINANCED AS OF JAN. 1, 1990)

TABLE T-1
PART 1
PAGE 2 OF 2

NAME OF FACILITY	FINANCING OR OPERATING AUTHORITY	LOCATION		LENGTH (MILES) 1/	AREA TYPE	INTER-STATE ROUTE	REMARKS
		FROM	TO				
I-76 TOLL BRIDGE	DELAWARE RIVER JOINT TOLL BRIDGE COMMISSION	S. OF PHILLIPSBURG, NJ (6.7 MILES)	DELaware RIVER	8.9	URBAN	78	TOLL ONLY ON WESTBOUND ROADWAY
I-76 TOLL BRIDGE	DELAWARE RIVER JOINT TOLL BRIDGE COMMISSION	POHATONG TOWN-SHIP, NJ	DELaware RIVER	4.1	URBAN	78	TOLL ONLY ON WESTBOUND ROADWAY
DELAWARE WATER GAP (I-80)	DELAWARE RIVER JOINT TOLL BRIDGE COMMISSION	PAHACHARRY, NJ (0.5 MILES)	DELAWARE RIVER	0.9	RURAL	80	TOLL ONLY ON WESTBOUND ROADWAY
BEN FRANKLIN (I-676)	DELAWARE RIVER PORT AUTHORITY	CAMDEN, NJ (1.0 MILES)	DELAWARE RIVER	1.4	URBAN	676	
WALT WHITMAN (I-76)	DELAWARE RIVER PORT AUTHORITY	GLOUCESTER, NJ (1.1 MILES)	DELAWARE RIVER	4.0	URBAN	76	
NJ AND PA TURNPIKE (I-95)	NJ AND PA TURNPIKE AUTHORITIES	NJ TURNPIKE (0.6 MILES)	DELAWARE RIVER	1.2	URBAN	95	
NEW YORK							
SOUTH GRAND ISLAND (I-190)	NEW YORK STATE THRUWAY AUTHORITY	GRAND ISLAND, NY	NIAGARA RIVER	1.2	URBAN	190	TOLL ONLY ON NORTHBOUND ROADWAY
NORTH GRAND ISLAND (I-190)	NEW YORK STATE THRUWAY AUTHORITY	NIAGARA FALLS, NY	NIAGARA RIVER	1.2	URBAN	190	TOLL ONLY ON SOUTHBOUND ROADWAY
TAPPAN ZEE (I-87)	NEW YORK STATE THRUWAY AUTHORITY	NYACK, NY	HUDSON RIVER	3.7	URBAN	87	
NEWBURGH-BEACON (I-84)	NEW YORK STATE THRUWAY AUTHORITY	NEWBURGH, NY	HUDSON RIVER	2.7	URBAN	84	
TRIBOROUGH (I-278)	TRIBOROUGH BRIDGE & TUNNEL AUTHORITY	BRONX, NY	EAST RIVER	3.1	URBAN	278	
BRONX-WHITESTONE (I-678)	TRIBOROUGH BRIDGE & TUNNEL AUTHORITY	BRONX, NY	EAST RIVER	1.9	URBAN	678	
THROGS NECK (I-296)	TRIBOROUGH BRIDGE & TUNNEL AUTHORITY	BRONX, NY	EAST RIVER	2.6	URBAN	296	
VERRAZANO-NARROWS (I-278)	TRIBOROUGH BRIDGE & TUNNEL AUTHORITY	STATEN ISLAND, NY	THE NARROWS	1.9	URBAN	278	
QUEENS MIDTOWN (2 TUBES) (I-485)	TRIBOROUGH BRIDGE & TUNNEL AUTHORITY	NEW YORK, NY	EAST RIVER	2.6	URBAN	485	---TUNNEL---
BROOKLYN BATTERY (I-478)	TRIBOROUGH BRIDGE & TUNNEL AUTHORITY	NEW YORK, NY	EAST RIVER	2.1	URBAN	478	---TUNNEL---
NEW YORK-CANADA							
THOUSAND ISLANDS (I-81)	THOUSAND ISLANDS BRIDGE AUTHORITY	COLLINS LANDING, NY (0.9 MILES)	ST. LAWRENCE RIVER	6.2	RURAL	81	
LEWISTON-QUEENSTON (I-190)	NIAGARA FALLS BRIDGE COMMISSION	LEWISTON, NY (0.8 MILES)	NIAGARA RIVER	1.8	URBAN	190	
SUMMARY OF INTERSTATE TOLL BRIDGE AND TUNNEL MILEAGE IN THE UNITED STATES							
ROAD SYSTEM		GRAND TOTAL		LESS NONTOLL SECTIONS		NET TOLL MILEAGE	
RURAL		25.6				25.6	
URBAN		84.3				84.3	
TOTAL		109.9				109.9	

**NON-INTERSTATE TOLL BRIDGES AND TUNNELS IN THE UNITED STATES
(IN OPERATION, UNDER CONSTRUCTION, OR FINANCED AS OF JAN. 1, 1990)**

TABLE T-1
PART 2
PAGE 1 OF 6

NAME OF FACILITY	FINANCING OR OPERATING AUTHORITY	LOCATION			LENGTH (MILES) 1/	FUNC- TIONAL CODE 2/	ROAD SYSTEM CODE 3/	REMARKS 4/
		FROM	BODY OF WATER CROSSING	TO				
ANTIOCH (JOHN A. NEDJEDLY) SAN MATEO-HAYWARD DUMBARTON VINCENT THOMAS SAN DIEGO-CORONADO GOLDEN GATE MURRAY ROAD	CALIFORNIA TRANSPORTATION COMM.	CALIFORNIA) 1.4) 0.9	06 12	03 04	TOLL ONLY ON NORTHBOUND ROADWAY
		CONTRA COSTA CO.	SAN JOAQUIN RIVER	SACRAMENTO COUNTY				
	CALIFORNIA TRANSPORTATION COMM. CALIFORNIA TRANSPORTATION COMM. CALIFORNIA TRANSPORTATION COMM. CALIFORNIA TRANSPORTATION COMM.	SAN MATEO, CA	SAN FRANCISCO BAY	HAYWARD, CA	2.3 9.9	12 12 12 12	04 14 14 14	
		PALO ALTO, CA	SAN FRANCISCO BAY	NEWARK, CA	5.9			
		SAN PEDRO, CA	LOS ANGELES HARBOR	TERMINAL ISLAND, CA	1.6			
		SAN DIEGO, CA	SAN DIEGO BAY	CORONADO, CA	2.1			
GOLDEN GATE BRIDGE, HIGHWAY & TRANSPORTATION DIST. CITY OF OCEANSIDE	SAN FRANCISCO, CA	SAN FRANCISCO BAY	MARIN COUNTY, CA	2.3	12	04		
OCEANSIDE, CA	SAN LUIS REY RIVER	OCEANSIDE, CA	0.2	16	14	TOLL ONLY ON WESTBOUND ROADWAY		
CARD SOUND BRYANT PATTON NAVARRE PINELLAS BAYWAY PENSACOLA BEACH (OLD) PENSACOLA BEACH CAUSEWAY (NEW) TREASURE ISLE CAUSEWAY BROAD CAUSEWAY RICKENBACKER CAUSEWAY VENETIAN WAY CAUSEWAY CLEARWATER PASS SANIBEL-CAPTIVA CAPE CORAL	MONROE COUNTY FLORIDA DEPT. OF TRANSPORTATION FLORIDA DEPT. OF TRANSPORTATION FLORIDA DEPT. OF TRANSPORTATION FLORIDA DEPT. OF TRANSPORTATION DEPARTMENT OF GENERAL SERVICES (& FLDOT) CITY OF TREASURE ISLAND TOWN OF BAY HARBOR ISLANDS DADE COUNTY DADE COUNTY PORT AUTHORITY CITY OF CLEARWATER LEE COUNTY LEE COUNTY	FLORIDA			3.3 4.6 1.4 14.9 2.0 2.0 0.3 0.7 3.0 0.5 1.0 2.0 1.1	07 06 06 16 07 07 16 14 16 16 16 16 17 16	11 09 09 09 06 09 12 11 12 12 12 12 11 11	NO TOLL ON RETURN TRIP
		DADE CO., FL	CARD SOUND	STEAMBOAT CREEK, FL				
		CAT POINT, FL	ST. GEORGE ISLE SOUND	ST. GEORGE ISLE, FL				
		NAVARRE, FL	SANTA ROSA SOUND	SANTA ROSA ISLE, FL				
		ST. PETERSBURG, FL	LOWER TAMPA BAY	MULLET KEY, FL				
		GULF BREEZE, FL	SANTA ROSA SOUND	SANTA ROSA ISLE, FL				
		US 98, SANTA ROSA CO., FL	SANTA ROSA SOUND	SANTA ROSA ISLE, ESCAMBIA CO., FL				
		ST. PETERSBURG, FL	BOCA CIEGA BAY	TREASURE ISLAND, FL				
		NORTH MIAMI, FL	BISCAYNE BAY	BAY HARBOR ISLE, FL				
		MIAMI, FL	BISCAYNE BAY	BISCAYNE KEY, FL				
		MIAMI, FL	BISCAYNE BAY	MIAMI BEACH, FL				
		CLEARWATER BEACH, SANIBEL, FL	CLEARWATER PASS PINE ISLAND SOUND	BELLAIR BEACH, FL CAPTIVA, FL				
		CAPE CORAL, FL	CALOOSAHATCHEE RIVER	FORT MYERS, FL				
		F. J. TORRAS CAUSEWAY	GEORGIA DEPT. OF TRANSPORTATION GEORGIA STATE TOLLWAY AUTHORITY	GEORGIA				
BRUNSWICK, GA	MCKAY RIVER (INTRACOASTAL WATERWAY)			ST. SIMONS ISLAND				
NEW HARMONY WABASH MEMORIAL	WHITE COUNTY ILLINOIS BRIDGE COMMISSION INDIANA DEPARTMENT OF HIGHWAYS	ILLINOIS-INDIANA			0.5 0.8	06 06	03 03	
		WHITE CO., IL (0.3 MILES)	WABASH RIVER	NEW HARMONY, IN (0.2 MILES)				
WHITE CO., IL (0.5 MILES)	WABASH RIVER	MT. VERNON, IN (0.4 MILES)						
ROCK ISLAND CENTENNIAL MACARTHUR FORT MADISON	ROCK ISLAND, IL CENTENNIAL BRIDGE COMMISSION CITY OF BURLINGTON, IA A.T. & S.F. RWY. CO., TOPEKA, KS	ILLINOIS-IOWA			0.7 0.4 0.6	14 14 14	04 04 04	PRIVATE OWNERSHIP MUNICIPALLY OWNED PRIVATE OWNERSHIP
		ROCK ISLAND, IL (0.3 MILES)	MISSISSIPPI RIVER	DAVENPORT, IA (0.4 MILES)				
		GULFPORT, IL (0.2 MILES)	MISSISSIPPI RIVER	BURLINGTON, IA (0.2 MILES)				
NIOTA, IL (0.3 MILES)	MISSISSIPPI RIVER	FT. MADISON, IA (0.3 MILES)						

**NON-INTERSTATE TOLL BRIDGES AND TOLL TUNNELS IN THE UNITED STATES
(IN OPERATION, UNDER CONSTRUCTION, OR FINANCED AS OF JAN. 1, 1990)**

TABLE T-1
PART 2
PAGE 2 OF 8

NAME OF FACILITY	FINANCING OR OPERATING AUTHORITY	LOCATION			LENGTH (MILES) 1/	FUNC- TIONAL CODE 2/	ROAD SYSTEM CODE 3/	REMARKS 4/
		FROM	BODY OF WATER CROSSED	TO				
McKINLEY EADS	CITY OF VENICE, IL TERMINAL RAILROAD ASSOCIATION, ST. LOUIS, MO	ILLINOIS-MISSOURI			1.2 0.7	16 16	14 12	PRIVATE OWNERSHIP
		VENICE, IL (0.4 MILES) EAST ST. LOUIS, IL (0.4 MILES)	MISSISSIPPI RIVER MISSISSIPPI RIVER	ST. LOUIS, MO ST. LOUIS, MO (0.3 MILES)				
MATTHEW E. WELSH LINCOLN TRAIL	INDIANA DEPT. OF TRANSPORTATION INDIANA DEPT. OF TRANSPORTATION	INDIANA-KENTUCKY			0.8 0.5	06 06	03 03	
		MAUKPORT, IN (0.2 MILES) CANNELTON, IN (0.2 MILES)	OHIO RIVER OHIO RIVER	BRANDENBURG, KY (0.4 MILES) HAWESVILLE, KY (0.3 MILES)				
ST. FRANCISVILLE	WAYLAND SPECIAL ROAD DISTRICTS, MO	IOWA-MISSOURI) 0.1) 0.2 0.3	07 06	05 03	MUNICIPALLY OWNED
		VINCENNES, IA (0.2 MILES)	DES MOINES RIVER	ST. FRANCISVILLE, MO (0.1 MILES)				
BELLEVUE DECATUR PLATTSMOUTH	CITY OF BELLEVUE, NE BRIDGE COMMISSION BURT COUNTY, NE BRIDGE COMMISSION PLATTSMOUTH, NE BRIDGE COMMISSION	IOWA-NEBRASKA) 0.2) 0.2 0.4 1.0 0.2) 06) 14 06 02) 03) 04 03 03	MUNICIPALLY OWNED PRIVATE OWNERSHIP PRIVATE OWNERSHIP
		SR 370, IA (0.2 MILES)	MISSOURI RIVER	BELLEVUE, NE (0.2 MILES)				
		ONAWA, IA (0.5 MILES) MILLS CO., IA (0.1 MILES)	MISSOURI RIVER MISSOURI RIVER	DECATUR, NE (0.5 MILES) PLATTSMOUTH, NE (0.1 MILES)				
PLATTE PURCHASE	PLATTE COUNTY, MO	KANSAS-MISSOURI			1.3	14	10	TOLL ONLY ON NORTHBOUND ROADWAY SOUTHBOUND ROADWAY (FAIRFAX BR.) FREE
SEBREE-BEECH	KENTUCKY STATE TURNPIKE AUTHORITY	KENTUCKY			0.2	07	05	
NOLAN TOLL BRIDGE	EVERETTE THOMPSON	KENTUCKY-WEST VIRGINIA			0.1	09	11	PRIVATE OWNERSHIP
SUNSHINE BRIDGE LAKE PONTCHARTRAIN CAUSEWAY GREATER NEW ORLEANS MISSISSIPPI RIVER BRIDGE	LOUISIANA DEPARTMENT OF TRANSPORTATION AND DEVELOPMENT GREATER NEW ORLEANS EXP. COMMISSION MISSISSIPPI RIVER BRIDGE AUTHORITY	LOUISIANA			0.6) 25.0) 5.0 30.0 0.8	06 02 14 12 12	04 11 12 04	
		ASCENSION PARISH	MISSISSIPPI RIVER	ST. JAMES PARISH				
		NEW ORLEANS, LA	LAKE PONTCHARTRAIN	MANDEVILLE, LA				
		US-90 AT I-10	MISSISSIPPI RIVER	US-90 AT WEST BANK EXPRESSWAY				

**NON-INTERSTATE TOLL BRIDGES AND TUNNELS IN THE UNITED STATES
(IN OPERATION, UNDER CONSTRUCTION, OR FINANCED AS OF JAN. 1, 1990)**

5

TABLE-1
PART 2
PAGE 3 OF 8

NAME OF FACILITY	FINANCING OR OPERATING AUTHORITY	LOCATION			LENGTH (MILES) 1/	FUNC- TIONAL CODE 2/	ROAD SYSTEM CODE 3/	REMARKS 4/
		FROM	BODY OF WATER CROSSING	TO				
SUSQUEHANNA WILLIAM PRESTON LANE, JR. (2 BRIDGES) FRANCIS S. KEY BRIDGE	MARYLAND TRANSPORTATION AUTHORITY	HAVRE DE GRACE, MD	SUSQUEHANNA RIVER	PERRYVILLE, MD	1.88	02	03	
	MARYLAND TRANSPORTATION AUTHORITY	SANDY POINT, MD	CHESAPEAKE BAY	KENT ISLAND, MD	5.41	02	03	
	MARYLAND TRANSPORTATION AUTHORITY	HAWKINS POINTS, MD	PATAPSCO RIVER	EDGEMERE, MD	8.81	12	04	
MARYLAND-VIRGINIA								
HARRY W. NICE MEMORIAL	MARYLAND TRANSPORTATION AUTHORITY	CHARLES CO., MD (2.1 MILES)	POTOMAC RIVER	KING GEORGE CO., VA (0.1 MILES)	2.2	02	03	
MARYLAND-WEST VIRGINIA								
OLD TOWN	CHARLES O. WALTERS, OLDTOWN, MD	ALLEGANY CO., MD (0.1 MILES)	POTOMAC RIVER	HAMPSHIRE CO., WV (0.2 MILES)	0.3	07	11	PRIVATE OWNERSHIP
MASSACHUSETTS								
CALLAHAN AND SUMNER TUNNELS MAURICE J. TOBIN	MASSACHUSETTS TURNPIKE AUTHORITY	CROSS STREET, BOSTON, MA	BOSTON HARBOR	PORT STREET, EAST BOSTON, MA	1.24	12	04	---TUNNEL---
	MASSACHUSETTS PORT AUTHORITY	J.F. FITZGERALD EXPRESSWAY	MYSTIC RIVER	CHELSEA CITY LINE	1.00	12	04	
			BOSTON CITY LINE	MYSTIC RIVER	N.E. EXPRESSWAY	.77	12	
MICHIGAN								
GROSSE ISLE	GROSSE ISLE BRIDGE AUTHORITY	RIVERVIEW, MI	DETROIT RIVER	GROSSE ISLE, MI	0.5	18	12	PRIVATE OWNERSHIP
MICHIGAN-CANADA								
AMBASSADOR DETROIT-WINDSOR	DETROIT INTERNATIONAL BRIDGE AUTH. DETROIT AND CANADA TUNNEL, CORP. DETROIT, MI	DETROIT, MI (USA)	DETROIT RIVER	WINDSOR, ONTARIO	1.7	17	12	0.9 MILES WITHIN THE U.S. 0.5 MILES WITHIN THE U.S. ---TUNNEL---
		DETROIT, MI (USA)	DETROIT RIVER	WINDSOR, ONTARIO	1.0	19	12	
MINNESOTA								
MISSISSIPPI RIVER	A.E. ROMAN & SONS, CHICAGO, IL	INVER GROVE HEIGHTS, MN (0.15 MILES)	MISSISSIPPI RIVER	ST. PAUL PARK, MN (0.15 MILES)	0.3	16	14	PRIVATE OWNERSHIP
MINNESOTA-NORTH DAKOTA								
12TH/16TH AVENUE, N.	THE BRIDGE CO., MOOREHEAD, MN & MUNICIPAL DEV. CO., NEW YORK, NY	12TH AVENUE, FARGO, ND	RED RIVER OF THE NORTH	15TH AVENUE, MOORHEAD, MN	0.1	19	12	PRIVATE OWNERSHIP
MINNESOTA-CANADA								
INTERNATIONAL FALLS INTERNATIONAL FALLS	MN, DAKOTA & WESTERN ROADWAY, CO. & INT. BRIDGE & TERMINAL CO., LTD. BOISE - CASCADE CORP.	INTERNATIONAL FALLS, MN (0.1 MILES)	RAINY RIVER & CANAL	FT. FRANCES, ONTARIO (0.1 MILES)	0.2	14	04	PRIVATE OWNERSHIP 0.1 MILES WITHIN THE U.S. PRIVATE; 0.1 MILES WITHIN THE U.S.
		INTERNATIONAL FALLS, MN (0.1 MILES)	RAINY RIVER & CANAL	FT. FRANCES, ONTARIO (0.1 MILES)	0.2	14	04	
MISSOURI								
BROADWAY	KANSAS CITY, MO	KANSAS CITY, MO	MISSOURI RIVER	KANSAS CITY, MO	0.8	12	14	

NON-INTERSTATE TOLL BRIDGES AND TUNNELS IN THE UNITED STATES
(IN OPERATION, UNDER CONSTRUCTION, OR FINANCED AS OF JAN. 1, 1990)

6

TABLE T-1
PART 2
PAGE 4 OF 6

NAME OF FACILITY	FINANCING OR OPERATING AUTHORITY	LOCATION			LENGTH (MILES) 1/	FUNC- TIONAL CODE 2/	ROAD SYSTEM CODE 3/	REMARKS 4/
		FROM	BODY OF WATER CROSSING	TO				
NEW HAMPSHIRE-VERMONT								
CHESHIRE	CHESHIRE BRIDGE CORP., CHARLESTOWN, NH	CHARLESTOWN, NH (0.1 MILES)	CONNECTICUT RIVER	SPRINGFIELD, VT (0.01 MILES)	0.11	06	09	PRIVATE OWNERSHIP
NEW JERSEY								
MARGATE	MARGATE BRIDGE CO., VENTNOR, NJ	MARGATE, NJ	INTRACOASTAL WATERWAY	NORTHFIELD, NJ	1.8	16	12	PRIVATE OWNERSHIP
BEESLEYS POINT	BEESLEY'S POINT BRIDGE CO.	BEESLEYS POINT, NJ	GREAT EGG HARBOR INLET	SOMERS POINT, NJ	1.3	14	10	PRIVATE OWNERSHIP
TOWNSENDS INLET	CAPE MAY CO. BRIDGE COMMISSION	TOWNSENDS INLET, NJ	TOWNSENDS INLET	AVALON, NJ	0.7	07	07	
OCEAN CITY-LONGPORT	CAPE MAY CO. BRIDGE COMMISSION	OCEAN CITY, NJ	GREAT EGG HARBOR INLET	LONGPORT, NJ	1.4	14	14	
GRASSY SOUND	CAPE MAY CO. BRIDGE COMMISSION	STONE HARBOR, NJ	GRASSY SOUND CHANNEL	WILDWOOD, NJ	2.4	07	07	
MIDDLE THOROFARE	CAPE MAY CO. BRIDGE COMMISSION	CAPE MAY, NJ	COLD SPRING HARBOR	WILDWOOD, NJ	2.4	07	07	
CORSON'S INLET	CAPE MAY CO. BRIDGE COMMISSION	STRATHMERE, NJ	CORSON'S INLET	OCEAN CITY, NJ	0.7	07	07	
NEW JERSEY-NEW YORK								
BAYONNE	PORT AUTHORITY OF NY & NJ	BAYONNE, NJ (1.0 MILES)	KILL VAN KULL	PORT RICHMOND, S.I., NY (0.7 MILES)	1.7	12	04	TOLL ONLY ON EASTBOUND ROADWAY
OUTERBRIDGE CROSSING	PORT AUTHORITY OF NY & NJ	PERTH AMBOY, NJ (1.2 MILES)	ARTHUR KILL	TOTTENVILLE, S.I., NY (0.6 MILES)	1.8	12	04	TOLL ONLY ON EASTBOUND ROADWAY
LINCOLN (3 TUBES)	PORT AUTHORITY OF NY & NJ	WEEHAWKEN, NJ (1.5 MILES)	HUDSON RIVER	NEW YORK, NY (1.0 MILES)	2.5	12	04	TOLL ONLY ON EASTBOUND ROADWAY —TUNNEL—
NEW JERSEY-PENNSYLVANIA								
DINGMAN'S FERRY	DINGMAN'S CHOICE & DE BRIDGE CO.	SANDYSTON TOWNSHIP, NJ (0.1 MILES)	DELAWARE RIVER	DINGMAN'S FERRY, PA (0.3 MILES)	0.4	07	07	PRIVATE OWNERSHIP
TACONY-PALMYRA	BURLINGTON COUNTY BRIDGE COMMISSION	PALMYRA, NJ (0.5 MILES)	DELAWARE RIVER	PHILADELPHIA, PA (0.4 MILES)	0.9	14	04	
BURLINGTON-BRISTOL	BURLINGTON COUNTY BRIDGE COMMISSION	BURLINGTON, NJ (0.4 MILES)	DELAWARE RIVER	BRISTOL, PA (0.3 MILES)	0.7	14	04	
TRENTON-MORRISVILLE	DE RIVER JOINT TOLL BRIDGE COMMISSION	TRENTON, NJ (0.5 MILES)	DELAWARE RIVER	MORRISVILLE, PA (0.5 MILES)	1.1	12	04	
EASTON-PHILLIPSBURG	DE RIVER JOINT TOLL BRIDGE COMMISSION	PHILLIPSBURG, NJ (0.6 MILES)	DELAWARE RIVER	EASTON, PA (0.4 MILES)	1.0	14	04	
PORTLAND-COLUMBIA	DE RIVER JOINT TOLL BRIDGE COMMISSION	COLUMBIA, NJ (0.2 MILES)	DELAWARE RIVER	PORTLAND, PA (0.4 MILES)	0.8	02	03	
MILFORD-MONTAGUE	DE RIVER JOINT TOLL BRIDGE COMMISSION	MONTAGUE, NJ (0.5 MILES)	DELAWARE RIVER	MILFORD, PA (0.4 MILES)	0.9	06	03	
NEW HOPE-LAMBERTVILLE	DE RIVER JOINT TOLL BRIDGE COMMISSION	LAMBERTVILLE, NJ (0.4 MILES)	DELAWARE RIVER	NEW HOPE, PA (0.5 MILES)	0.9	02	03	
BETSY ROSS	DE RIVER PORT AUTHORITY	PENNSAUKEN, NJ (1.0 MILES)	DELAWARE RIVER	PHILADELPHIA, PA (1.1 MILES)	2.1	14	04	
COMMODORE JOHN BARRY	DE RIVER PORT AUTHORITY	BRIDGEPORT, NJ (1.3 MILES)	DELAWARE RIVER	CHESTER, PA (1.4 MILES)	2.7	02	03	

NON-INTERSTATE TOLL BRIDGES AND TUNNELS IN THE UNITED STATES
(IN OPERATION, UNDER CONSTRUCTION, OR FINANCED AS OF JAN. 1, 1990)

7

TABLE T-1
PART 2
PAGE 5 OF 6

NAME OF FACILITY	FINANCING OR OPERATING AUTHORITY	LOCATION			LENGTH (MILES) 1/	FUNC- TIONAL CODE 2/	ROAD SYSTEM CODE 3/	REMARKS 4/
		FROM	BODY OF WATER CROSSING	TO				
CASTLETON-ON-HUDSON KINGSTON-RHINECLIFF RIP VAN WINKLE	NEW YORK STATE THRUWAY AUTHORITY NEW YORK STATE BRIDGE AUTHORITY NEW YORK STATE BRIDGE AUTHORITY	NEW YORK						
		BELKIRK, NY	HUDSON RIVER	SCHODACK LANDING, NY	1.0	02	03	
		KINGSTON, NY	HUDSON RIVER	RHINECLIFF, NY	3.1	06	03	
		CATSKILL, NY	HUDSON RIVER	CATSKILL URBAN LINE)0.7	14	04	
MID-HUDSON	NEW YORK STATE BRIDGE AUTHORITY	HUDSON RIVER						
		CATSKILL URBAN LINE	HUDSON RIVER	HUDSON, NY)0.9	06	03	
					1.8			
		POUGHKEEPSIE, NY	HUDSON RIVER	POUGHKEEPSIE LINE)0.7	12	04	
BEAR MOUNTAIN ATLANTIC BEACH	NEW YORK STATE BRIDGE AUTHORITY NASSAU COUNTY BRIDGE AUTHORITY	HUDSON RIVER						
		POUGHKEEPSIE LINE	HUDSON RIVER	HIGHLAND, NY)0.3	02	03	
					1.0			
		BEAR MOUNTAIN, NY	HUDSON RIVER	PEEKSKILL, NY	0.8	02	03	
HENRY HUDSON MARINE PARKWAY	TRIBOROUGH BRIDGE & TUNNEL AUTH. TRIBOROUGH BRIDGE & TUNNEL AUTH.	HUDSON RIVER						
		ATLANTIC BEACH	EAST ROCKAWAY INLET	REYNOLDS CHANNEL)0.2	12	04	
		REYNOLDS CHANNEL	EAST ROCKAWAY INLET	LAWRENCE, NY)0.3	14	04	
					0.5			
CROSS BAY SMITH POINT	TRIBOROUGH BRIDGE & TUNNEL AUTH. SUFFOLK COUNTY	HUDSON RIVER						
		MANHATTAN, NY	HARLEM RIVER	BRONX, NY	0.8	12	04	
		FLATBUSH AVE., BROOKLYN, NY	ROCKAWAY INLET	ROCKAWAY, QUEENS, NY	2.7	14	04	
		QUEENS, NY	JAMAICA BAY	QUEENS, NY	4.5	14	04	
PEACE OGDENSBURG-PRESCOTT RAINBOW WHIRLPOOL RAPIDS SEAWAY INTERNATIONAL (CORNWALL-MESSENA)	BUFFALO-FT. ERIE PUB. BRIDGE AUTH. OGDENSBURG BRIDGE AUTHORITY NIAGARA FALLS BRIDGE COMMISSION NIAGARA FALLS BRIDGE COMMISSION ST. LAWRENCE SEAWAY DEVELOP. CORP.	NEW YORK-CANADA						
		BUFFALO, NY	NIAGARA RIVER	FORT ERIE, ON	1.0	19	12	0.6 MILES WITHIN THE U.S.
		OGDENSBURG, NY	ST. LAWRENCE RIVER	PRESCOTT, ON	2.3	14	04	1.4 MILES WITHIN THE U.S.
		NIAGARA FALLS, NY	NIAGARA RIVER	NIAGARA FALLS, ON	0.6	14	04	0.3 MILES WITHIN THE U.S.
		NIAGARA FALLS, NY	NIAGARA RIVER	NIAGARA FALLS, ON	0.2	14	04	0.1 MILES WITHIN THE U.S.
		ROOSEVELT TOWN, NY	ST. LAWRENCE RIVER	CORNWALL, ON	2.0	02	03	0.5 MILES WITHIN THE U.S.
PARKERSBURG MEMORIAL BELLAIRE-BENWOOD NEWELL-EAST LIVERPOOL	CITY OF PARKERSBURG, WV INTERSTATE BRIDGE CO., BELLAIRE, OH NEWELL BRIDGE & RWY CO., NEWELL, WV	OHIO-WEST VIRGINIA						
		BELPRE, OH (0.1 M)	OHIO RIVER	PARKERSBURG, WV (0.2 M)	0.8	14	04	
		BELLAIRE, OH (0.1 M) E. LIVERPOOL, OH (.1 M)	OHIO RIVER OHIO RIVER	BENWOOD, WV (0.3 M) NEWELL, WV (0.2 MILES)	0.4 0.3	14 07	12 12	PRIVATE OWNERSHIP PRIVATE OWNERSHIP
ASTORIA HOOD RIVER-WHITE SALMON BRIDGE OF THE GODS	OREGON TRANSPORTATION COMMISSION PORT OF HOOD RIVER COMMISSION PORT CASCADE LOCKS COMMISSION	OREGON-WASHINGTON						
		ASTORIA, OR (3.7 MILES)	COLUMBIA RIVER	MEGLER, WA (0.5 MILES)	4.2	02	03	
		HOOD RIVER, OR (0.5 M)	COLUMBIA RIVER	WHITE SALMON, WA	1.0	09	11	
MT. HOPE NEWPORT	RI TURNPIKE & BRIDGE AUTHORITY RI TURNPIKE & BRIDGE AUTHORITY	RHODE ISLAND						
		BRISTOL, RI JAMESTOWN, RI	MOUNT HOPE BAY NARRAGANSETT BAY	PORTSMOUTH, RI NEWPORT, RI	1.1 2.9	14 14	04 04	
MOUNTAIN CREEK LAKE BELTWAY 3 TOLL BRIDGE SAN LOUIS PASS-VACEK	TEXAS TURNPIKE AUTHORITY TEXAS TURNPIKE AUTHORITY GALVESTON COUNTY ROAD DIST. #1	TEXAS						
		GRAND PRAIRIE, TX	MOUNTAIN CREEK LAKE	WEST DALLAS, TX	2.6	14	04	
		PASADENA, TX	HOUSTON SHIP CHANNEL	I-10, E. HOUSTON, TX	4.2	14	12	
	GALVESTON COUNTY, TX	SAN LOUIS PASS	BRAZORIA COUNTY, TX	1.3	07	11		

**NON-INTERSTATE TOLL BRIDGES AND TUNNELS IN THE UNITED STATES
(IN OPERATION, UNDER CONSTRUCTION, OR FINANCED AS OF JAN. 1, 1990)**

8

TABLE T-1
PART 2
PAGE 6 OF 6

NAME OF FACILITY	FINANCING OR OPERATING AUTHORITY	LOCATION			LENGTH (MILES) 1/	FUNCTIONAL CODE 2/	ROAD SYSTEM CODE 3/	REMARKS 4/
		FROM	BODY OF WATER CROSSING	TO				
			TEXAS-MEXICO					
DEL RIO INTERNATIONAL	CITY OF DEL RIO, TX	DEL RIO, TX	RIO GRANDE RIVER	CIUDAD ACUNA, MEX	0.9	02	12	0.6 MILES WITHIN THE U.S.
LAREDO INTERNATIONAL (SAN DIARIO)	CITY OF LAREDO, TX	LAREDO, TX	RIO GRANDE RIVER	NUEVO LAREDO, MEX	0.2	14	12	0.1 MILES WITHIN THE U.S.
LAREDO INTERNATIONAL (CONVENT ST.)	CITY OF LAREDO, TX	LAREDO, TX	RIO GRANDE RIVER	NUEVO LAREDO, MEX	0.2	14	12	0.1 MILES WITHIN THE U.S.
CAMERON CO. INTERNATIONAL	CAMERON COUNTY, TX	BROWNSVILLE, TX	RIO GRANDE RIVER	MATAMORAS, MEXICO	0.2	14	12	0.1 MILES WITHIN THE U.S.
EAGLE PASS INTERNATIONAL	CITY OF EAGLE PASS, TX	EAGLE PASS, TX	RIO GRANDE RIVER	PEIDRAS NEGRAS, MEX	0.4	14	12	0.3 MILES WITHIN THE U.S.
ROMA INTERNATIONAL	STARR COUNTY, TX	ROMA, TX	RIO GRANDE RIVER	MIEGUEL ALEMEN, MEX	0.2	08	09	0.1 MILES WITHIN THE U.S.
McALLEN INTERNATIONAL	CITY OF McALLEN, TX	HIDALGO, TX	RIO GRANDE RIVER	REYNOSA, MEXICO	0.2	02	03	0.1 MILES WITHIN THE U.S.
BROWNSVILLE	BROWNSVILLE & MATAMORAS BRIDGE CO.	BROWNSVILLE, TX	RIO GRANDE RIVER	MATAMORAS, MEXICO	0.2	14	12	PRIVATE OWNERSHIP; 0.1 MILES IN U.S.
EL PASO (SANTA FE ST.)	CITY OF EL PASO, TX	EL PASO, TX	RIO GRANDE RIVER	JUAREZ, MEXICO	0.6	14	12	0.3 MILES WITHIN THE U.S.
EL PASO (STANTON STREET)	CITY OF EL PASO, TX	EL PASO, TX	RIO GRANDE RIVER	JUAREZ, MEXICO	0.2	14	12	0.1 MILES WITHIN THE U.S.
PROGRESO-NUEVO PROGRESO	B & P BRIDGE COMPANY	PROGRESO, TX	RIO GRANDE RIVER	NUEVO PROGRESO, MX	0.12	07	05	PRIVATE OWNERSHIP; 0.02 MILES IN U.S.
RIO GRANDE CITY	STARR-CAMARGO BRIDGE CO.	RIO GRANDE CITY, TX	RIO GRANDE RIVER	CAMARGO, MEXICO	0.2	16	14	PRIVATE OWNERSHIP; 0.1 MILES IN U.S.
MIERO SA	DUPONT DENEMOURS COMPANY	TEXAS FM-2627	RIO GRANDE RIVER	LALINDA, MEXICO	0.05	07	06	PRIVATE OWNERSHIP; TOLLS COLLECTED ONLY ON MEXICAN SIDE; 0.03 MILES IN U.S.
ZARAGOSA TOLL BRIDGE	CITY OF EL PASO, TX	TEXAS VILLAGE ISLETA	RIO GRANDE RIVER	ZARAGOSTA, MEXICO	0.3	14	12	0.1 MILES WITHIN THE U.S.
LAREDO-COLUMBIA SOLIDARITY BRIDGE	CITY OF LAREDO, TX.	LAREDO, TX	RIO GRANDE RIVER	COLUMBIA, MEXICO	0.18	14	12	EXPECTED OPENING IN 1991 0.09 MILES WITHIN THE U.S.
			VIRGINIA					
BOULEVARD	RICHMOND METROPOLITAN AUTHORITY	RICHMOND, VA (BYRD PARK)	JAMES RIVER	RICHMOND, VA (FOREST HILLS PARK)	0.4	16	14	
JORDAN CHESAPEAKE BAY	CITY OF CHESAPEAKE, VA CHESAPEAKE BAY BRIDGE AND TUNNEL DISTRICT	CHESAPEAKE, VA KIPTOPEAKE, VA	ELIZABETH RIVER CHESAPEAKE BAY	PORTSMOUTH, VA VIRGINIA BEACH, VA	0.4) 19.1) 0.6 19.7	16 02 12	14 03 04	—TUNNEL— PROJECT INCLUDES BRIDGE & TUNNEL
SPOKANE RIVER	WASHINGTON STATE TRANSPORTATION COMMISSION	SPOKANE, WA	WASHINGTON SPOKANE RIVER	SPOKANE, WA	0.9	14	14	
SUMMARY OF NON-INTERSTATE TOLL BRIDGES & TOLL TUNNELS IN THE UNITED STATES								
		ROAD SYSTEM	TOLL MILES					
		03 & 04	116.24					
		05	2.42					
		07	6.60					
		09 & 10	25.61					
		11 & 12	60.28					
		14	15.60					
		TOTAL	227.35					
<p>1/ THE MILEAGE OF STRUCTURES INCLUDES APPROACHES AND CONNECTING LINKS WHICH WERE FINANCED AS AN INTEGRAL PART OF THE TOLL PROJECT. THE MILEAGE OF TOLL BRIDGES INCLUDES APPROACH SECTIONS WHICH MAY BE USED TOLL FREE BY LOCAL RESIDENTS. MILEAGE OF SUCH SECTIONS IS IDENTIFIED AS "NONTOLL" IN THE REMARKS COLUMN.</p> <p>2/ (RURAL FUNCTIONAL CODES) — 02 - PRINCIPAL ARTERIAL, 06 - MINOR ARTERIAL, 07 - MAJOR COLLECTOR, 08 - MINOR COLLECTOR, 09 - LOCAL; (URBAN FUNCTIONAL CODES) — 12 - PRI - PRINCIPAL ARTERIAL, (OTHER FREEWAYS AND EXPRESSWAYS), 14 - OTHER PRINCIPAL ARTERIAL, 16 - MINOR ARTERIALS, 17 - COLLECTOR, 19 - LOCAL.</p> <p>3/ (ROAD SYSTEM CODES) 03 - OTHER FEDERAL-AID PRIMARY SYSTEM, RURAL; 04 - OTHER FEDERAL-AID PRIMARY SYSTEM, URBAN; 05 - FEDERAL-AID SECONDARY SYSTEM, RURAL, ON STATE HIGHWAYS; 07 - FEDERAL-AID SECONDARY SYSTEM, RURAL, OFF STATE HIGHWAYS; 09 - OTHER STATE-ADMINISTERED HIGHWAYS; RURAL; 10 - OTHER STATE-ADMINISTERED HIGHWAYS, URBAN; 11 - OTHER LOCAL RURAL ROADS; 12 - OTHER LOCAL CITY STREETS; 14 - FEDERAL-AID URBAN.</p>								

INTERSTATE TOLL ROADS IN THE UNITED STATES
(IN OPERATION, UNDER CONSTRUCTION, OR FINANCED AS OF JAN. 1, 1990)

TABLE T-1
PART 3
PAGE 1 OF 3

NAME OR ROAD	FINANCING OR OPERATING AUTHORITY	LOCATION		LENGTH (MILES) 1/	AREA TYPE	INTER- STATE ROUTE	REMARKS 1/
		FROM	TO				
JOHN F. KENNEDY MEMORIAL HIGHWAY (I-295 & I-95)	DELAWARE TRANSPORTATION AUTHORITY	DELAWARE) 0.7) 5.9) 5.3 11.9	URBAN URBAN URBAN	295 95	TOLL COLLECTED ONLY AT ONE TOLL PLAZA
		MARYLAND LINE	CHRISTINA INTERCHANGE				
ALLIGATOR ALLEY (I-75) (EVERGLADES PARKWAY)	FLORIDA DEPARTMENT OF TRANSPORTATION	SR 858, E. NAPLES	ANDYTOWN	77.2	RURAL	75	
EAST-WEST TOLLWAY (I-88)	ILLINOIS STATE TOLL HIGHWAY AUTHORITY	ILLINOIS) 32.7) 0.8) 13.6) 1.4) 21.6) 28.4 96.5	RURAL URBAN RURAL URBAN RURAL URBAN	88	
		US 90	EAST OF US 51				
		EAST OF US 51	ROCHELLE URBAN LIMIT				
		ROCHELLE URBAN LIMIT	1.29 MILES E. OF SR23				
		1.29 MILES E. OF SR23	DEKALB-SYCAMORE U.L.				
DEKALB-SYCAMORE U.L.	.75 MILES E. OF SR58						
.75 MILE E. OF SR58	I-294						
NORTH-SOUTH TOLLWAY (I-355)	ILLINOIS STATE TOLL HIGHWAY AUTHORITY	I-55 AT BOLINGBROOK	ARMY TRAIL ROAD	17.1	URBAN	355	
		NORTHWEST TOLLWAY	ILLINOIS STATE TOLL HIGHWAY AUTHORITY	S. OF WI STATE LINE	SR173) 6.4	RURAL
SR 173	SOUTH OF CH 25) 2.6	URBAN		
SOUTH OF CH 25	NORTH OF TR 159) 1.0	RURAL		
NORTH OF TR 159	CH 6) 1.0	URBAN		
CH 6	SOUTH OF TR 169A) 1.5	RURAL		
SOUTH OF TR 169A	ROCKFORD URBAN LIMIT) 2.7	URBAN		
ROCKFORD URBAN LIMIT	BELVIDERE URBAN LIMIT) 4.1	RURAL		
BELVIDERE URBAN LIMIT	PEARL STREET) 2.0	URBAN		
PEARL STREET	RANDALL RD. W. OF ELGIN) 28.4	RURAL		
RANDALL RD. W. OF ELGIN	ELGIN URBAN LIMIT) 5.2	URBAN		
ELGIN URBAN LIMIT	ELGIN JOLIET & EAST. RR) 1.7	RURAL		
ELGIN JOLIET & EAST. RR	WEST OF I-294) 19.8	URBAN		
I-90 AT MILEPOST 17.4	I-39) 0.2	URBAN		
		76.6				I-39 CONNECTOR	
CHICAGO SKYWAY (I-90)	CITY OF CHICAGO	I-94, CHICAGO, IL	INDIANA LINE) 7.7	URBAN	90	
TRI-STATE TOLLWAY (I-94)	ILLINOIS STATE TOLL HIGHWAY AUTHORITY	S. OF WI. STATE LINE	CHICAGO URBAN LIMITS) 5.0	RURAL	94	INCLUDES 4.4 MILE SPUR
		CHICAGO URBAN LIMITS	US 41) 23.6	URBAN	94	
		I-94	I-80) 48.1	URBAN	294	
		I-294	SR 394) 5.3	URBAN	80	
				82.0			
INDIANA EAST-WEST TOLL RD. (I-90)	INDIANA DEPARTMENT OF TRANSPORTATION	INDIANA) 21.3) 130.1) 5.5 156.9	URBAN RURAL URBAN	90 80	
		ILLINOIS LINE	PORTER CO. LINE-GARY				
		PORTER COUNTY LINE-GARY	OHIO STATE LINE				

INTERSTATE TOLL ROADS IN THE UNITED STATES
(IN OPERATION, UNDER CONSTRUCTION, OR FINANCED AS OF JAN. 1, 1990)

10

TABLE T-1
PART 3
PAGE 2 OF 3

NAME OR ROAD	FINANCING OR OPERATING AUTHORITY	LOCATION		LENGTH (MILES) 1/	AREA TYPE	INTER- STATE ROUTE	REMARKS 1/
		FROM	TO				
KANSAS TURNPIKE (I-35) (I-35) (I-135) (I-35) (I-470) (I-70) (I-70) (I-70) (I-470) (I-335)	KANSAS TURNPIKE AUTHORITY	KANSAS					
		OKLAHOMA STATE LINE	EMPORIA) 109.7	RURAL	95	INCLUDES 8.8 MILES "NONTOLL"
) 17.3	URBAN	35	
		WICHITA CONNECTION) 0.4	URBAN	135	
		EMPORIA CONNECTION) 0.1	URBAN	95	
		S. TOPEKA CONNECTION) 0.2	URBAN	470	
		EAST TOPEKA CONNECTION) 0.2	URBAN	70	
		TOPEKA	KANSAS CITY) 40.0	RURAL	70	
) 14.9	URBAN	70	
) 4.6	URBAN	470	
	EMPORIA	TOPEKA) 47.4	RURAL	335		
) 2.7	URBAN	335		
			237.5				
MAINE TURNPIKE (I-95) (I-95) (I-95) (I-95) (I-195) (I-295) (I-495) (I-495)	MAINE TURNPIKE AUTHORITY MAINE TURNPIKE AUTHORITY MAINE TURNPIKE AUTHORITY MAINE TURNPIKE AUTHORITY MAINE TURNPIKE AUTHORITY MAINE TURNPIKE AUTHORITY MAINE TURNPIKE AUTHORITY MAINE TURNPIKE AUTHORITY	MAINE					
		YORK	FALMOUTH) 35.9	RURAL	95	
		YORK	FALMOUTH) 11.6	URBAN	95	
		GARDINER	AUGUSTA) 6.1	RURAL	95	
		GARDINER	AUGUSTA) 0.9	URBAN	95	
		SACO CONNECTOR) 0.4	URBAN	195	
		PORTLAND CONNECTOR) 0.4	URBAN	295	
		FALMOUTH	GARDINER) 38.8	RURAL	495	
		PORTLAND	GARDINER) 11.7	URBAN	495	
		105.8					
MASSACHUSETTS TURNPIKE	MASSACHUSETTS TURNPIKE AUTHORITY	MASSACHUSETTS					
		N.Y. STATE LINE	I-93 BOSTON) 68.5	RURAL	90	
) 67.1	URBAN	90	
		135.6					
NEW HAMPSHIRE TURNPIKE	NH DEPARTMENT OF TRANSPORTATION	NEW HAMPSHIRE					
		MASSACHUSETTS LINE	MAINE LINE) 12.0	RURAL	95	INCLUDES 0.9 MILES "NONTOLL"
) 4.1	URBAN	95	INCLUDES 3.2 MILES "NONTOLL"
F.E. EVERETT TURNPIKE	NH DEPARTMENT OF TRANSPORTATION			16.1			
		JCT I-293 AND	JCT SR 9 IN CONCORD) 9.7	RURAL	93 & 293	INCLUDES 0.8 MILES "NONTOLL"
		SR 101 IN BEDFORD) 9.8	URBAN	93 & 293	INCLUDES 9.3 MILES "NONTOLL"
				19.5			
NEW JERSEY TURNPIKE	NEW JERSEY TURNPIKE AUTHORITY	NEW JERSEY					
		US ROUTE 46	PA TURNPIKE EXIT) 14.9	RURAL	95	
) 51.1	URBAN	95	
				66.0			
NEWARK BAY EXTENSION PA TURNPIKE EXTENSION	NEW JERSEY TURNPIKE AUTHORITY NEW JERSEY TURNPIKE AUTHORITY			8.4			
		NEWARK AIRPORT	HOLLAND TUNNEL) 4.3	URBAN	78	
		PA TURNPIKE EXIT	DEL. RIVER BRIDGE) 1.7	RURAL	95	
				6.0	URBAN	95	
THOMAS E. DEWEY THRUWAY NY STATE THRUWAY: BERKSHIRE SECTION NIAGARA SECTION NEW ENGLAND SECTION	NEW YORK STATE THRUWAY AUTHORITY NEW YORK STATE THRUWAY AUTHORITY NEW YORK STATE THRUWAY AUTHORITY NEW YORK STATE THRUWAY AUTHORITY	NEW YORK					
		PENNSYLVANIA LINE	ALBANY) 236.9	RURAL	90	INCLUDES 9.1 MILES "NONTOLL"
) 111.2	URBAN		
		NEW YORK CITY	ALBANY) 89.5	RURAL	87	INCLUDES 17.8 MILES "NONTOLL"
) 56.6	URBAN		
				494.2			
		EXIT B1 (US 9)	MASSACHUSETTS LINE	17.7	RURAL	90	
		BUFFALO	NIAGARA FALLS	18.7	URBAN	190	INCLUDES 14.4 MILES "NONTOLL"
		PELHAM PARKWAY, NY, NY	CONNECTICUT LINE	15.0	URBAN	95	INCLUDES 10.2 MILES "NONTOLL"

INTERSTATE TOLL ROADS IN THE UNITED STATES
(IN OPERATION, UNDER CONSTRUCTION, OR FINANCED AS OF JAN. 1, 1990)

TABLE T-1
PART 3
PAGE 3 OF 3

NAME OR ROAD	FINANCING OR OPERATING AUTHORITY	LOCATION		LENGTH (MILES) 1/	AREA TYPE	INTER-STATE ROUTE	REMARKS 1/
		FROM	TO				
OHIO TURNPIKE	OHIO TURNPIKE COMMISSION	PENNSYLVANIA LINE	OHIO) 15.8	RURAL	76	INCLUDES 35 MILES ADDED FROM SECTION 16 OF THE 1993 HIGHWAY ACT
		JUNC OF I-80 & I-76	JUNC OF I-80 & I-76) 6.0	URBAN	76	
TURNER TURNPIKE	OKLAHOMA TURNPIKE AUTHORITY	OKLAHOMA CITY	OKLAHOMA) 80.9	RURAL	44	
) 5.2	URBAN		
) 88.1			
WILL ROGERS TURNPIKE	OKLAHOMA TURNPIKE AUTHORITY	TULSA	MISSOURI) 84.5	RURAL	44	
) 3.6	URBAN		
H.E. BAILEY TURNPIKE	OKLAHOMA TURNPIKE AUTHORITY	US 62 S. OF OK CITY	US 62 N. OF LAWTON) 88.1	RURAL	44	
) 66.9	URBAN		
) 4.1			
PENNSYLVANIA TURNPIKE EASTERN EXTENSION	PENNSYLVANIA TURNPIKE COMMISSION	IRWIN	CARLISLE) 159.5	RURAL	76	
) 96.3	RURAL		
) 5.2	URBAN		
) 54.1	RURAL		
WESTERN EXTENSION	PENNSYLVANIA TURNPIKE COMMISSION	IRWIN	OHIO LINE) 13.0	RURAL	76	
) 31.9	URBAN		
DELAWARE RIVER EXTENSION	PENNSYLVANIA TURNPIKE COMMISSION	VALLEY FORGE	DE RIVER BRIDGE) 359.0	URBAN	276	2.5 MILES SECTION FROM BRIDGE TO I-96 TO BE INCORPORATED AS I-96 UPON COMPLETION OF INTERCHANGE
RICHMOND-PETERSBURG TURNPIKE	VIRGINIA DEPARTMENT OF TRANSPORTATION	.19 MILES S. RT. 301 OVERPASS IN PETERSBURG	VIRGINIA) 4.2	URBAN	96	
) 3.2	RURAL		
) 18.2	URBAN		
) 2.7	URBAN		
WEST VIRGINIA TURNPIKE	WEST VIRGINIA PARKWAYS ECONOMIC DEVELOPMENT & TOURISM AUTHORITY	CHARLESTON	WEST VIRGINIA) 68.8	RURAL	77	
) 18.0	URBAN		
SUMMARY OF INTERSTATE TOLL ROADS IN OPERATION IN THE UNITED STATES							
ROAD SYSTEM		GRAND TOTAL		LESS		NET	
RURAL		1859.3	1.7	NONTOLL	1.7	TOLL MILEAGE	1857.6
URBAN		779.4	72.9		72.9		706.5
TOTAL		2638.7	74.8		74.8		2564.1
1/ THE MILEAGE OF ROADS INCLUDES APPROACHES AND CONNECTING LINKS WHICH WERE FINANCED AS AN INTEGRAL PART OF THE TOLL PROJECT. THE MILEAGE OF TOLL ROADS INCLUDES SECTIONS WHICH MAY BE USED TOLL FREE BY LOCAL RESIDENTS. MILEAGE OF SUCH SECTIONS IS IDENTIFIED AN "NONTOLL" IN THE REMARKS COLUMN.							

NON-INTERSTATE TOLL ROADS IN THE UNITED STATES
(IN OPERATION, UNDER CONSTRUCTION, OR FINANCED AS OF JAN. 1, 1990)

TABLE T-1
PART 4
PAGE 1 OF 4

NAME OF ROAD 1/	FINANCING OR OPERATING AUTHORITY	LOCATION		LENGTH (MILES) 2/	FUNC- TIONAL CODE 3/	ROAD SYSTEM CODE 4/	REMARKS 5/
		FROM	TO				
SEVENTEEN MILE DRIVE	DEL MONTE PROPERTIES, INC.	CALIFORNIA PACIFIC GROVE CARMEL		10.8	19	12	PRIVATE: LENGTH IS 17.3 MILES IF COMPLETE CIRCUIT IS MADE VIA SLOAT RD, LOPEZ RD, SUNRIDGE RD, CONSTANILLA WAY, LOS ALTOS DR, AND SCENIC DRIVE.
PIKES PEAK AUTO HIGHWAY E-470	CITY OF COLORADO SPRINGS E-470 PUBLIC HIGHWAY AUTHORITY	COLORADO CASCADE PIKES PEAK I-25 AT INTERSECTION I-25 (1 MILE SOUTH OF I-25 & C-470 OF INTERSECTION OF I-25 & SH7		10.8 50.0	09 17	11 12	PHASE 1 TO BE COMPLETED, 1990
EAST-WEST (MIAMI) TOLLWAY SR-112 (MIAMI) EXPRESSWAY FLORIDAS TURNPIKE CENTRAL FL EXPRESSWAY	FLORIDA DEPT. OF TRANSPORTATION FLORIDA DEPT. OF TRANSPORTATION FLORIDA DEPT. OF TRANSPORTATION FLORIDA DEPT. OF TRANSPORTATION	FLORIDA I-95 & I-395 NW, 27TH AVENUE I-95 MIAMI AIRPORT MIAMI WILDWOOD SR 520 US 1 AT COCOA ST. JOHNS RIVER SR 405		2.8 3.8 270.0 15.5 8.8	12 12 02 02 02	04 04 04 09 09	
BEE LINE EXPRESSWAY BEE LINE CONNECTOR	ORLANDO-ORANGE CO. EXPRESSWAY AUTHORITY (& FLDOT) ORLANDO-ORANGE CO. EXPRESSWAY AUTHORITY (& FLDOT)	SR 15 SR 520 SR 400 SR 528A		17.4 8.4	02 12	09 09	
HOMESTEAD EXTENSION (WEST DADE EXPRESSWAY) SOUTH DADE EXPRESSWAY S. CROSSTOWN EXPRESSWAY	FLORIDA DEPT. OF TRANSPORTATION FLORIDA DEPT. OF TRANSPORTATION FLORIDA DEPT. OF TRANSPORTATION	SOUTH DIXIE HIGHWAY FLORIDA TURNPIKE WEST DADE EXPRESSWAY PALMETTO EXPWY GANDY BOULEVARD MORGAN CITY VICINITY (DOWNTOWN)		47.3 7.3 12.9	12 16 12	09 14 14	
EAST-WEST EXPRESSWAY (ORLANDO) SAWGRASS-DEERFIELD EXPRESSWAY	ORLANDO-ORANGE CO. EXPWY AUTHORITY (& FLDOT) BROWARD CO. TOLL AUTHORITY	WEST OF SR 435 SR 15-A SR 84 SR 845		13.7 21.5	12 02	10 11	
JEKYLL ISLAND ROAD	JEKYLL ISLAND AUTHORITY	GEORGIA JEKYLL ISLAND (ON ISLAND) JEKYLL ISLAND (ON ISLAND)		0.4	03	03	
EAST-WEST TOLLWAY (SR 56 CONNECTOR)	ILLINOIS STATE HIGHWAY TOLL AUTHORITY	ILLINOIS I-88 SR 56		0.4	08	09	
18TH STREET EXPRESSWAY	KANSAS TURNPIKE AUTHORITY	KANSAS KANSAS TURNPIKE SOUTH OF I-35		3.7 0.6 4.3	12 14	10 12	

NON-INTERSTATE TOLL ROADS IN THE UNITED STATES
(IN OPERATION, UNDER CONSTRUCTION, OR FINANCED AS OF JAN. 1, 1990)

TABLE T-1
PART 4
PAGE 2 OF 4

NAME OF ROAD 1/	FINANCING OR OPERATING AUTHORITY	LOCATION		LENGTH (MILES) 2/	FUNC- TIONAL CODE 3/	ROAD SYSTEM CODE 4/	REMARKS 5/
		FROM	TO				
		KENTUCKY					
AUDUBON PARKWAY	KENTUCKY TURNPIKE AUTHORITY	HENDERSON	OWENSBORO) 18.7) 2.1) 3.8 24.6	02 14 12	03 04 04	INCLUDES 5.7 MILES "NONTOLL" "NONTOLL" SECTION "NONTOLL" SECTION
BLUEGRASS PARKWAY	KENTUCKY TURNPIKE AUTHORITY	ELIZABETHTOWN	US 60 EAST OF VERSAILLES	71.1	02	03	INCLUDES 11.0 MILES "NONTOLL"
CUMBERLAND PARKWAY	KENTUCKY TURNPIKE AUTHORITY	BOWLING GREEN	SOMERSET) 83.6) 3.8) 1.2 88.6	02 12 14	03 04 04	"NONTOLL" SECTION
DANIEL BOONE PARKWAY	KENTUCKY TURNPIKE AUTHORITY	LONDON	HAZARD) 69.1	02	03	INCLUDES 10.0 MILES "NONTOLL"
GREEN RIVER	KENTUCKY TURNPIKE AUTHORITY	BOWLING GREEN	OWENSBORO) 63.3) 6.9 70.2	02 12	03 04	INCLUDES 1.8 MILES "NONTOLL" INCLUDES 5.8 MILES "NONTOLL"
PENNYRILE PARKWAY	KENTUCKY TURNPIKE AUTHORITY	HOPKINSVILLE	HENDERSON) 69.4) 11.9 71.3	02 12	03 04	INCLUDES 34.8 MILES "NONTOLL" INCLUDES 10.1 MILES "NONTOLL"
PURCHASE PARKWAY	KENTUCKY TURNPIKE AUTHORITY	FULTON	CALVERT CITY) 45.1) 0.9) 6.3 52.3	02 07 12	03 06 04	INCLUDES 7.2 MILES "NONTOLL" "NONTOLL" SECTION INCLUDES 5.9 MILES "NONTOLL"
		LOUISIANA					
AVERY ISLAND	AVERY ISLAND, INC.	SR 329 JUNCTION	AVERY ISLAND	1.6	—	09	PRIVATE TOLL ROAD
		MAINE					
MAINE TURNPIKE APPROACH ROAD	MAINE TURNPIKE AUTHORITY	SOUTH PORTLAND	SOUTH PORTLAND	0.4	14	10	
		NEW HAMPSHIRE					
F. E. EVERRETT TURNPIKE	NH DEPT. OF TRANSPORTATION	MASSACHUSETTS LINE	JCT I-293 AND SR 101 IN BEDFORD) 8.6) 11.4) 0.7 20.7	12 02 12	04 09 10	INCLUDES 6.8 MILES "NONTOLL"
SPAULDING TURNPIKE	NH DEPT. OF TRANSPORTATION	PORTSMOUTH	JCT SR 16 IN MILTON) 5.1) 7.8) 13.4) 3.6) 3.3 33.2	12 02 12 14 14	04 09 10 04 10	"NONTOLL" SECTION "NONTOLL" SECTION "NON-TOLL SECTION" "NON-TOLL SECTION"
MT. WASHINGTON SUMMIT RD.	MT. WASHINGTON SUMMIT RD. CO.	SR 16	MT. WASHINGTON	7.0	09	11	PRIVATE

NON-INTERSTATE TOLL ROADS IN THE UNITED STATES
(IN OPERATION, UNDER CONSTRUCTION, OR FINANCED AS OF JAN. 1, 1990)

TABLE T-1
PART 4
PAGE 3 OF 4

NAME OF ROAD 1/	FINANCING OR OPERATING AUTHORITY	LOCATION		LENGTH (MILES) 2/	FUNC- TIONAL CODE 3/	ROAD SYSTEMS CODE 4/	REMARKS 5/
		FROM	TO				
		NEW JERSEY					
NEW JERSEY TURNPIKE (MAIN LINE)	NEW JERSEY TURNPIKE AUTHORITY	PENNSYLVANIA TURNPIKE	DEEPWATER) 26.3) 24.9	02 12	09 10	
GARDEN STATE PARKWAY	NEW JERSEY HIGHWAY AUTHORITY	LINCOLN TUNNEL MONTVALE	SR 3 CAPE MAY	51.2) 0.8) 3.9) 15.2) 67.6) 87.9 174.6	12 12 02 12 02 12	04 03 04 09 10	"NONTOLL" SECTION "NONTOLL" SECTION
ATLANTIC CITY EXPRESSWAY	NEW JERSEY EXPRESSWAY AUTHORITY	ATLANTIC CITY	SR 42, TURNERSVILLE) 28.3) 15.8 44.1	02 12	09 10	
		NEW YORK					
NY STATE THRUWAY: BERKSHIRE SECTION GARDEN STATE PARKWAY CONNECTION WHITEFACE MOUNTAIN VETERANS MEM. HIGHWAY HUTCHINSON RIVER PARKWAY SAW MILL RIVER PARKWAY GEORGE W. PERKINS DRIVE MT. DEFIANCE SCENIC HWY PROSPECT MOUNTAIN VETERANS MEM. HIGHWAY	NEW YORK STATE THRUWAY AUTHORITY NEW YORK STATE THRUWAY AUTHORITY OLYMPIC REGIONAL DEV. AUTHORITY NY STATE DEPT. OF TRANSPORTATION NY STATE DEPT. OF TRANSPORTATION PALISADES INTERSTATE PARK COMM. MT. DEFIANCE SCENIC CORPORATION NY DEPT. OF ENVIRON. CONSERVATION	I-87 NEW JERSEY LINE WILMINGTON NY CITY LINE NY CITY LINE BEAR MOUNTAIN TICONDEROGA VILLAGE US 9	I-90 SPRING VALLEY WHITEFACE MOUNTAIN CONNECTICUT LINE KATONAH MT. DEFIANCE TOP OF PROSPECT MT.	5.6 2.4 5.0 11.2 11.1 3.0 1.0 5.9	12 12 08 12 12 09 09 09	04 04 11 04 04 11 11 11	"NONTOLL" SECTION INCLUDES 10.5 MILES "NONTOLL" INCLUDES 8.6 MILES "NONTOLL" APRIL THROUGH NOVEMBER SUMMER ONLY, PRIVATE
		OKLAHOMA					
INDIAN NATION TURNPIKE MUSKOGEE TURNPIKE SEC. A MUSKOGEE TURNPIKE SEC. B CIMARRON TURNPIKE KILPATRICK TURNPIKE CREEK TURNPIKE CHICKASAW TURNPIKE CHEROKEE TURNPIKE	OKLAHOMA TURNPIKE AUTHORITY OKLAHOMA TURNPIKE AUTHORITY OKLAHOMA TURNPIKE AUTHORITY OKLAHOMA TURNPIKE AUTHORITY OKLAHOMA TURNPIKE AUTHORITY OKLAHOMA TURNPIKE AUTHORITY OKLAHOMA TURNPIKE AUTHORITY OKLAHOMA TURNPIKE AUTHORITY	HENRYETTA SR 51 EAST OF BROKEN ARROW SR 166 MUSKOGEE US 64 W. OF WESTPORT I-35 US 75 IN JENKS SH 7 IN SULPHUR US 412 E. OF CHOUTEAU	HUGO SR 165 MUSKOGEE I-40 I-35 N. OF PERRY HEFNER PARKWAY US 64 IN TULSA SH 1, S. OF ADA US 412 IN FLINT CRK.	105.4 33.8 19.5 67.4 9.5 6.9 17.7 32.9	02 02 02 02 12 12 02 02	09 09 09 09 10 10 09 09	INCLUDES 7.8 MILES SPUR INCLUDES 7.8 MILES SPUR EXPECTED COMPLETION DEC. 1991 EXPECTED COMPLETION DEC. 1991 EXPECTED COMPLETION DEC. 1991 EXPECTED COMPLETION DEC. 1991
		PENNSYLVANIA					
MOSEY WOOD TOLL ROAD NORTHEASTERN EXTENSION GREENSBURG BYPASS BEAVER VALLEY EXPRESSWAY	VACATION CHARTERS LIMITED PENNSYLVANIA TURNPIKE COMMISSION PENNSYLVANIA TURNPIKE COMMISSION PENNSYLVANIA TURNPIKE COMMISSION	LAKE HARMONY I-76 US 22 SR-51	PA 940 SCRANTON NEW STATION NEW CASTLE BYPASS) 2.6) 110.3 112.8 13.0 16.0	09 02 02 02	11 09 09 09	PRIVATE OWNERSHIP
		TEXAS					
DALLAS NORTH TOLLWAY HARDY STREET TOLLROAD SAM HOUSTON TOLLWAY HARDY TOLLROAD CONNECTOR	TEXAS TURNPIKE AUTHORITY HARRIS COUNTY TOLLROAD AUTHORITY HARRIS COUNTY TOLLROAD AUTHORITY HARRIS COUNTY TOLLROAD AUTHORITY	NORTH DALLAS, TX LOOP 610, HOUSTON, TX US 59, HOUSTON, TX HOUSTON INTERCONTINENTAL AIRPORT	DWNTOWN, DALLAS, TX I-45 (N. OF HOUSTON) I-45 (N. OF HOUSTON) HARDY TOLLROAD	9.1 21.2 27.3 2.0	14 14 14 14	12 12 12 12	AIRPORT CONNECTOR IN CONSTRUCTION

NON-INTERSTATE TOLL ROADS IN THE UNITED STATES
(IN OPERATION, UNDER CONSTRUCTION, OR FINANCED AS OF JAN. 1, 1990)

TABLE T-1
PART 4
PAGE 4 OF 4

NAME OF ROAD 1/	FINANCING OR OPERATING AUTHORITY	LOCATION		LENGTH (MILES) 2/	FUNC- TIONAL CODE 3/	ROAD SYSTEMS CODE 4/	REMARKS 5/
		FROM	TO				
VERMONT							
EQUINOX SKY LINE DRIVE	DR. JOE G. DAVIDSON, MANCHESTER, VT	SR 7A-SUNDERLAND	MT. EQUINOX	6.4	09	11	PRIVATE
MT. MANSFIELD TOLL ROAD	MT. MANSFIELD CO., INC.	SR 108	MT. MANSFIELD	4.5	09	11	PRIVATE
BURKE MOUNTAIN TOLL ROAD	BURKE MOUNTAIN RECREATION, INC.	TH 7	BURKE MOUNTAIN	2.0	09	11	PRIVATE
VIRGINIA							
RICHMOND EXPRESSWAY SYSTEM:	VIRGINIA DEPT. OF TRANSPORTATION	OLD HUNDRED ROAD	ROUTE 288	1.2	09	11	
POWHITE PKWAY EXT (RT 78)	VIRGINIA DEPT. OF TRANSPORTATION	ROUTE 288	COURTHOUSE ROAD	2.5	02	03	
POWHITE PKWAY EXT (RT 78)	VIRGINIA DEPT. OF TRANSPORTATION	COURTHOUSE ROAD	CHIPPENHAM PKWAY	5.7	12	04	
POWHITE PKWAY EXT (RT 78)	RICHMOND METROPOLITAN AUTHORITY	CHIPPENHAM PARKWAY	I-196	3.5	12	10	
DOWNTOWN EXPRESSWAY (RT 106)	RICHMOND METROPOLITAN AUTHORITY	I-196	RICH.-PETERSB. TPK	3.4	12	10	
DOWNTOWN CONNECTOR (RT 148)	RICHMOND METROPOLITAN AUTHORITY	POWHITE PARKWAY	DOWNTOWN EXPWAY	0.9	12	10	
NORFOLK-VA BEACH TOLL ROAD (RT 44)	VIRGINIA DEPT. OF TRANSPORTATION	NORFOLK	VIRGINIA BEACH	12.2	12	14	
DULLES TOLL ROAD	VIRGINIA DEPT. OF TRANSPORTATION	RT 28 (DULLES AIRPORT)	FAIRFAX-LOUDOUN CO. LINE	0.4	02	09	
DULLES TOLL ROAD	VIRGINIA DEPT. OF TRANSPORTATION	FAIRFAX-LOUDOUN CO. LINE	I-495	12.2	12	10	
PUERTO RICO							
LAS AMERICAS	PUERTO RICO HIGHWAY AUTHORITY	SAN JUAN	PONCE	59.9	02	09	
LAS AMERICAS	PUERTO RICO HIGHWAY AUTHORITY	SAN JUAN	PONCE	5.0	02	10	EXPECTED COMPLETION 1992-1993
DE DIEGO	PUERTO RICO HIGHWAY AUTHORITY	SAN JUAN	ARECIBO	25.3	02	10	
DE DIEGO	PUERTO RICO HIGHWAY AUTHORITY	DORADO	ARECIBO	8.5	02	09	EXPECTED COMPLETION 1991-1992
DE DIEGO	PUERTO RICO HIGHWAY AUTHORITY	DORADO	ARECIBO	18.6	02	09	EXPECTED COMPLETION 1993-1994
SUMMARY OF NON-INTERSTATE TOLL ROADS IN THE US							
ROAD SYSTEM	TOLL MILES	LESS NONTOLL	NET TOLL MILEAGE				
03 & 04	519.0	182.3	336.7				
05	0.9	0.9	----				
09 & 10	1240.6	14.0	1226.6				
11 & 12	190.8	----	190.8				
14	32.4	----	32.4				
TOTAL	1983.7	177.2	1806.5				
<p>1/ FACILITIES MARKED WITH AN ASTERISK(*) WERE UNDER CONSTRUCTION OR FINANCED AS OF 1-1-85 (NOT INCLUDED IN THE MILEAGE SUMMARY).</p> <p>2/ THE MILEAGE OF STRUCTURES INCLUDES APPROACHES AND CONNECTING LINKS WHICH WERE FINANCED AS AN INTEGRAL PART OF THE TOLL PROJECT. THE MILEAGE OF TOLL BRIDGES INCLUDES APPROXIMATE SECTIONS WHICH MAY BE USED TOLL FREE BY LOCAL RESIDENTS. MILEAGE OF SUCH SECTIONS IS IDENTIFIED AS "NONTOLL" IN THE REMARKS COLUMN.</p> <p>3/ (RURAL FUNCTIONAL CODES) — 02 - PRINCIPAL ARTERIAL, 06 - MINOR ARTERIAL, 07 - MAJOR COLLECTOR, 08 - MINOR COLLECTOR, 09 - LOCAL, (URBAN FUNCTIONAL CODES) — 12 - PRINCIPAL ARTERIAL, (OTHER FREEWAYS & EXPRESSWAYS), 14 - OTHER PRINCIPAL ARTERIAL, 16 - MINOR ARTERIAL, 17 - COLLECTOR, 19 - LOCAL.</p> <p>4/ (ROAD SYSTEM CODES) 03 - OTHER FEDERAL-AID PRIMARY SYSTEM, RURAL; 04 - OTHER FEDERAL-AID PRIMARY SYSTEM, URBAN; 05 - FEDERAL-AID SECONDARY SYSTEM, RURAL, ON STATE HIGHWAYS; 07 - FEDERAL-AID SECONDARY SYSTEM, RURAL, OFF STATE HIGHWAYS; 09 - OTHER STATE-ADMINISTERED HIGHWAYS, RURAL; 10 - OTHER STATE-ADMINISTERED HIGHWAYS, URBAN - OTHER LOCAL RURAL ROADS; 12 - OTHER LOCAL CITY STREETS; 14 - FEDERAL-AID URBAN.</p> <p>5/ DENOTES PUBLIC OWNERSHIP UNLESS OTHERWISE INDICATED.</p>							

VEHICULAR TOLL FERRIES IN THE UNITED STATES
(IN OPERATION, UNDER CONSTRUCTION, OR FINANCED AS OF JAN. 1, 1990)

TABLE T-1
PART 5
PAGE 1 OF 5

NAME OF FERRY 1/	FINANCING OR OPERATING AUTHORITY	LOCATION			ROAD SYSTEM CODE 2/	REMARKS
		FROM	BODY OF WATER CROSSING	TO		
ALABAMA						
MOBILE BAY FERRY	VON BERGAN LTD.	DAUPHIN ISLAND	MOBILE BAY	FORT MORGAN	03	PRIVATE
ALASKA						
MOTOR VESSEL COLUMBIA	ALASKA DOT AND PUBLIC FACILITIES, AMHS	BELLINGHAM, WA	INSIDE PASSAGE	SKAGWAY, AK	03	MAY OPERATE SUMMER ONLY.
MOTOR VESSEL MALASPINA	ALASKA DOT AND PUBLIC FACILITIES, AMHS	BELLINGHAM, WA	INSIDE PASSAGE	SKAGWAY, AK	03	
MOTOR VESSEL LE CONTE	ALASKA DOT AND PUBLIC FACILITIES, AMHS	PETERSBURG, AK	N. ALASKA PANHANDLE	SKAGWAY, AK	03	
MOTOR VESSEL TUSTUMENA	ALASKA DOT AND PUBLIC FACILITIES, AMHS	VALDEZ, AK	GULF OF ALASKA	DUTCH HARBOR, AK	05 & 09	
MOTOR VESSEL BARTLETT	ALASKA DOT AND PUBLIC FACILITIES, AMHS	CORDOVA, AK	PRINCE WILLIAM SOUND	WHITTIER, AK	05	
MOTOR VESSEL CHILKAT	ALASKA DOT AND PUBLIC FACILITIES, AMHS	KETCHIKAN, AK	S. ALASKA PANHANDLE	PRINCE OF WALES ISLAND, AK	05	
MOTOR VESSEL MATANUSKA	ALASKA DOT AND PUBLIC FACILITIES, AMHS	BELLINGHAM, WA	INSIDE PASSAGE	SKAGWAY, AK	03	
MOTOR VESSEL TAKU	ALASKA DOT AND PUBLIC FACILITIES, AMHS	PRINCE RUPERT, BC	INSIDE PASSAGE	SKAGWAY, AK	03	
MOTOR VESSEL AURORA	ALASKA DOT AND PUBLIC FACILITIES, AMHS	PRINCE RUPERT, BC	S. ALASKA PANHANDLE	PETERSBURG, AK	03	
MOTOR VESSEL BOB ELLIS	KETCHIKAN GATEWAY BOROUGH	KETCHIKAN, AK	TONGASS NARROWS	KETCHIKAN INTER- NATIONAL AIRPORT	05	
MOTOR VESSEL K. EICHNER	KETCHIKAN GATEWAY BOROUGH	KETCHIKAN, AK	TONGASS NARROWS	KETCHIKAN INTER- NATIONAL AIRPORT	05	
ALASKA-CANADA						
MOTOR VESSEL TAKU	ALASKA DOT AND PUBLIC FACILITIES	PRINCE RUPERT, BC	INSIDE PASSAGE	SKAGWAY, AK	03	MAY MAKE SUMMER CALLS TO BELLINGHAM, WA
MOTOR VESSEL AURORA	ALASKA DOT AND PUBLIC FACILITIES	PRINCE RUPERT, BC	INSIDE PASSAGE	JUNEAU, AK	03	
ALASKA-WASHINGTON						
MOTOR VESSEL MATANUSKA	ALASKA DOT AND PUBLIC FACILITIES	SEATTLE, WA	INSIDE PASSAGE	SKAGWAY, AK	03	
CALIFORNIA						
BALBOA ISLAND	BALBOA ISLAND FERRY INC.	BALBOA ISLAND, CA	NEWPORT BAY	BALBOA, CA	12	PRIVATE
CONNECTICUT						
ROCKY HILL-GLASTONBURY	CONNECTICUT DOT	ROCKY HILL, CT	CONNECTICUT RIVER	S. GLASTONBURY, CT	10	APRIL THROUGH NOVEMBER
CHESTER-HADLYME	CONNECTICUT DOT	CHESTER, CT	CONNECTICUT RIVER	HADLYME, CT	09	
CONNECTICUT-NEW YORK						
BRIDGEPORT-PORT JEFFERSON	BRIDGEPORT & PORT JEFFERSON STEAMBOAT COMPANY	BRIDGEPORT, CT	LONG ISLAND SOUND	PORT JEFFERSON, LONG ISLAND, NY	12	MAY THROUGH OCTOBER, PRIVATE
NEW LONDON-ORIENT POINT	CROSS SOUND FERRY SERVICES	NEW LONDON, CT	LONG ISLAND SOUND	ORIENT PT., LONG ISLAND, NY	03	PRIVATE
FISHERS ISLAND	TOWN OF SOUTHOLD	NEW LONDON, CT	FISHERS ISLAND SOUND	FISHERS ISLAND, NY	11	
CONNECTICUT-RHODE ISLAND						
NEW LONDON-BLOCK ISLAND	INTERSTATE NAVIGATION CO.	NEW LONDON, CT	BLOCK ISLAND SOUND	BLOCK ISLAND, RI	11	PRIVATE

VEHICULAR TOLL FERRIES IN THE UNITED STATES
(IN OPERATION, UNDER CONSTRUCTION, OR FINANCED AS OF JAN. 1, 1990)

17

TABLE T-1
PART 5
PAGE 2 OF 5

NAME OF FERRY 1/	FINANCING OR OPERATING AUTHORITY	LOCATION			ROAD SYSTEM CODE 2/	REMARKS
		FROM	BODY OF WATER CROSSING	TO		
LEWES-CAPE MAY	DELAWARE RIVER & BAY AUTHORITY	LEWES, DE	DELAWARE-NEW JERSEY DELAWARE BAY	CAPE MAY, NJ	11	OPERATES YEAR ROUND
DRAYTON ISLAND MAYPORT-FT. GEORGE DOG ISLAND FERRY	PUTNAM COUNTY FLORIDA DEPT. OF TRANSPORTATION	FLORIDA				
		GEORGETOWN, FL	LAKE GEORGE	DRAYTON ISLAND, FL	11	PRIVATE; LIMITED SERVICE
		MAYPORT, FL	ST. JOHNS RIVER	FT. GEORGE, FL	09	
CARRABELLE, FL	GULF OF MEXICO	DOG ISLAND, FL	11			
CAVE-IN-ROCK	CAVE-IN-ROCK FERRY CO., OWENSBORO, KY	CAVE-IN-ROCK, IL	ILLINOIS-KENTUCKY OHIO RIVER	SOUTH SIDE OF RIVER, KY	06	PRIVATE
GOLDEN EAGLE CANTON-MEYER WINFIELD	CALHOUN-ST. CHARLES FERRY CO. ALLEN BLACKMORE, CANTON, MO STEVEN & VINCENT BAALMAN	ILLINOIS-MISSOURI				
		GOLDEN EAGLE, IL	MISSISSIPPI RIVER	KAMPVILLE, MO	11	PRIVATE
		MEYER, IL	MISSISSIPPI RIVER	CANTON, MO	12	PRIVATE
		NEAR BATCHTOWN, IL	MISSISSIPPI RIVER	WINFIELD, MO	11	PRIVATE
CASSVILLE CAR FERRY	CASSVILLE VILLAGE, WI	CASSVILLE, WI	IOWA-WISCONSIN MISSISSIPPI RIVER	MILLVILLE, IA	07	MUNICIPALLY OWNED
VALLEY VIEW ROCHESTER	VALLEY VIEW FERRY COMPANY WILMA GIBBONS	KENTUCKY				
		VALLEY VIEW, KY	KENTUCKY RIVER	N. SIDE OF RIVER	05	TRI-COUNTY COMPACT
		ROCHESTER, KY	GREEN RIVER	COOL SPRINGS, KY	09	PRIVATE
DORENA	HUGH LATTUS	HICKMAN, KY	KENTUCKY-MISSOURI MISSISSIPPI RIVER	DORENA, MO	06	PRIVATE (OPERATES 7AM - 6 PM)
AUGUSTA ANDERSON	AUGUSTA FERRY LINES ANDERSON BOAT COMPANY	KENTUCKY-OHIO				
		AUGUSTA, KY	OHIO RIVER	UTOPIA, OH	12	PRIVATE (OPERATES 8AM-6PM)
		CONSTANCE, KY	OHIO RIVER	CINCINNATI, OH	14	PRIVATE (OPERATES 6AM-9:30PM)
MACHIGONNE II WILLIAM SILSBY MARGARET C. SMITH NORTH HAVEN EVERETT LIBBY REBEL GOVERNOR CURTIS	CASCO BAY ISLAND TRANSIT DISTRICT PORTS & MARINE TRANS., ME DOT PORTS & MARINE TRANS., ME DOT PORTS & MARINE TRANS., ME DOT PORTS & MARINE TRANS., ME DOT CASCO BAY ISLAND TRANSIT DISTRICT PORTS & MARINE TRANS., ME DOT	MAINE				
		PORTLAND, ME	CASCO BAY	PEAKS ISLAND, ME	11	QUASI-MUNICIPAL
		VARIOUS	PENOBSCOT BAY	VARIOUS	11	
		LINCOLNVILLE, ME	PENOBSCOT BAY	ISLESBORO, ME	05	
		ROCKLAND, ME	PENOBSCOT BAY	NORTH HAVEN, ME	11	QUASI-MUNICIPAL
		BASS HARBOR, ME	PENOBSCOT BAY	SWAN'S ISLAND, ME	11	
PORTLAND, ME	CASCO BAY	CASCO BAY ISLES, ME	11			
		ROCKLAND, ME	PENOBSCOT BAY	VINALHAVEN, ME	11	
SCOTIA PRINCE BLUE NOSE	LION FERRY A/B CANADIAN-AMERICAN LINE MARINE ATLANTIC, LTD.	MAINE-CANADA				
		PORTLAND, ME	BAY OF FUNDY	YARMOUTH, NS	11	PRIVATE
		BAR HARBOR, ME	BAY OF FUNDY	YARMOUTH, NS	11	PRIVATE
OXFORD	CAPTAIN GILBERT CLARK	OXFORD, MD	MARYLAND TRED AVON RIVER	BELLEVUE, MD	11	PRIVATE & PUBLIC (TALBOT COUNTY)

VEHICULAR TOLL FERRIES IN THE UNITED STATES
(IN OPERATION, UNDER CONSTRUCTION, OR FINANCED AS OF JAN. 1, 1990)

TABLE T-1
PART 5
PAGE 3 OF 5

NAME OF FERRY 1/	FINANCING OR OPERATING AUTHORITY	LOCATION			ROAD SYSTEM CODE 2/	REMARKS
		FROM	BODY OF WATER CROSSING	TO		
WHITES FERRY, INC.	WHITES FERRY INC.	MONTGOMERY CO., MD	MARYLAND-VIRGINIA POTOMAC RIVER	LOUDOUN CO., VA	11	PRIVATE
WOODS HOLE HYANNIS	WOODS HOLE, MARTHA'S VINEYARD & NANTUCKET STEAMSHIP AUTHORITY WOODS HOLE, MARTHA'S VINEYARD & NANTUCKET STEAMSHIP AUTHORITY	WOODS HOLE, MA NYANNIS, MA	MASSACHUSETTS VINEYARD SOUND NANTUCKET SOUND	MARTHA'S VINEYARD, MA NANTUCKET, MA	11 11	OPERATES YEAR ROUND OPERATES YEAR ROUND
HARSON'S ISLAND ST. MARY'S RIVER FERRY SYSTEM ST. MARY'S RIVER FERRY SYSTEM ST. MARY'S RIVER FERRY SYSTEM IRONTON CHARLEVOIX/BEAVER ISLAND RUSSELL ISLAND CHEBOYGAN	CHAMPION AUTO FERRY INC. EASTERN UPPER PENINSULA TRANSPORTATION AUTHORITY EASTERN UPPER PENINSULA TRANSPORTATION AUTHORITY EASTERN UPPER PENINSULA TRANSPORTATION AUTHORITY CHARLEVOIX COUNTY ROAD COMMISSION BEAVER ISLAND NAVIGATION COMPANY RAYMOND PLAUNT FERRY SERVICE	ALGONAC, MI SAULT STE. MARIE, MI BARBEAU, MI DETOUR, MI IRONTON, MI CHARLEVOIX, MI ALGONAC, MI CHEBOYGAN, MI	MICHIGAN ST. CLAIR RIVER ST. MARY'S RIVER ST. MARY'S RIVER ST. MARY'S RIVER LAKE CHARLEVOIX LAKE MICHIGAN ST. CLAIR RIVER LAKE HURON	HARSON'S ISLAND, MI SUGAR ISLAND, MI NEEBISH ISLAND, MI DURMOND ISLAND, MI IRONTON, MI ST. JAMES, MI RUSSELL ISLAND, MI BOIS BLANC ISLE, MI	05 11 11 3 & 5 11 11 11 11	PRIVATE PRIVATE PRIVATE PRIVATE PRIVATE PRIVATE PRIVATE PRIVATE
ALGONAC MARINE CITY ROBERT'S LANDING	WALPOLE-ALGONAC FERRY COMPANY BLUEWATER FERRY PORT LAMBTON FERRY COMPANY	ALGONAC, MI MARINE CITY, MI ROBERT'S LANDING, MI	MICHIGAN-CANADA ST. CLAIR RIVER ST. CLAIR RIVER ST. CLAIR RIVER	WALPOLE ISLE, ON SOMBRA, ON PORT LAMBTON, ON	11 11 11	PRIVATE PRIVATE PRIVATE
LUDINGTON-KEWAUNEE	MICHIGAN-WISCONSIN TRANS. COMPANY	LUDINGTON, MI	MICHIGAN-WISCONSIN LAKE MICHIGAN	KEWAUNEE, WI	03	PRIVATE
KINGS POINT	WARREN COUNTY	VICKSBURG, MS	MISSISSIPPI YAZOO RIVER	KINGS POINT, MS	11	FREE EXCEPT SUN. & HOLIDAYS
LAKE OF THE OZARKS AKERS GASCONADE	OSAGE FERRY COMPANY DEE MAGGARD ROLAND MEYER	OSAGE BEACH AKERS, MO ROUTE J, OSAGE CO.	MISSOURI LAKE OF THE OZARKS CURRENT RIVER GASCONADE RIVER	SUNRISE BEACH ROUTE K ROUTE J, GASCONADE CO.	03 05 05	PRIVATE PRIVATE PRIVATE
MCCLELLAND VIRGELLE LOMA CARTER	BLAINE COUNTY CHOUTEAU COUNTY CHOUTEAU COUNTY CHOUTEAU COUNTY	CHINOCK, MT (80 MI. SOUTH) BIG SANDY, MT LOMA, MT CARTER, MT	MONTANA MISSOURI RIVER MISSOURI RIVER MISSOURI RIVER MISSOURI RIVER	WINIFRED, MT GERALDINE, MT GERALDINE, MT HIGHWOOD, MT	11 11 11 11	APRIL-OCTOBER; FREE MAR-OCT; FREE 7AM-7PM, TOLL 7PM-7AM MAR-OCT; FREE 7AM-7PM, TOLL 7PM-7AM MAR-OCT; FREE 7AM-7PM, TOLL 7PM-7AM
WHITEHALL STREET GREENPORT SHELTER ISLAND	CITY OF NEW YORK, NY SHELTER ISLAND-GREENPORT FERRY CO. SOUTH FERRY INC.	MANHATTAN, NY GREENPORT, NY SHELTER ISLAND, LONG ISLAND, NY	NEW YORK NEW YORK HARBOR SHELTER ISLAND SOUND SHELTER ISLAND SOUND	ST. GEORGE, STATEN ISLAND, NY SHELTER ISLAND, LONG ISLAND, NY NORTH HAVEN, LONG ISLAND, NY	12 03 03	PRIVATE PRIVATE PRIVATE

VEHICULAR TOLL FERRIES IN THE UNITED STATES
(IN OPERATION, UNDER CONSTRUCTION, OR FINANCED AS OF JAN. 1, 1990)

19

TABLE T-1
PART 5
PAGE 4 OF 5

NAME OF FERRY 1/	FINANCING OR OPERATING AUTHORITY	LOCATION			ROAD SYSTEM CODE 2/	REMARKS
		FROM	BODY OF WATER CROSSING	TO		
PORT KENT ESSEX CUMBERLAND HEAD FORT TICONDEROGA	LAKE CHAMPLAIN TRANSP. CO. INC. LAKE CHAMPLAIN TRANSP. CO. INC. LAKE CHAMPLAIN TRANSP. CO. INC.	PORT KENT, NY	NEW YORK-VERMONT LAKE CHAMPLAIN	BURLINGTON, VT	12	MAY THROUGH OCTOBER, PRIVATE APRIL THROUGH NOVEMBER, PRIVATE OPEN ALL YEAR; PRIVATE; FERRY ROUTE NOT ON F.A.S. SYSTEM. MAY THROUGH OCTOBER; PRIVATE; FERRY ROUTE NOT ON F.A.S. SYSTEM.
		ESSEX, NY	LAKE CHAMPLAIN	CHARLOTTE, VT	11	
		PLATTSBURGH, NY	LAKE CHAMPLAIN	GRAND ISLE, VT	05	
	FT. TICONDEROGA, NY	LAKE CHAMPLAIN	LARRABEES POINT, VT	05		
CAPE VINCENT	HORNES FERRY LIMITED	CAPE VINCENT, NY	NEW YORK-CANADA ST. LAWRENCE RIVER	WOLFE ISLAND, ON	11	PRIVATE
OCRACOKE-SWAN QUARTER CEDAR ISLAND-OCRACOKE SOUTHPORT FORT FISHER	NC DEPT. OF TRANSPORTATION NC DEPT. OF TRANSPORTATION NC DEPT. OF TRANSPORTATION	OCRACOKE, NC	NORTH CAROLINA PAMLICO SOUND	SWAN QUARTER, NC	05	
		CEDAR ISLAND, NC	PAMLICO SOUND	OCRACOKE, NC	05	
		SOUTHPORT, NC	CAPE FEAR	FT. FISHER, NC	09	
CATAWBA POINT YANKEE CLIPPER & ERIE ISLE KELLYS ISLANDER COMMUTER CHALLENGER ENDEAVOR	MILLER BOAT LINE PUT-IN-BAY BOAT LINE NEWMAN BOAT LINES NEWMAN BOAT LINES NEWMAN BOAT LINES NEWMAN BOAT LINES	CATAWBA POINT, OH	OHIO LAKE ERIE	S. BASS ISLAND, OH	11	APRIL THROUGH NOVEMBER, PRIVATE APRIL THROUGH DECEMBER, PRIVATE APRIL THROUGH OCTOBER, PRIVATE APRIL THROUGH OCTOBER, PRIVATE JULY AND AUGUST, PRIVATE APRIL TO OCTOBER, PRIVATE
		PORT CLINTON, OH	LAKE ERIE	S. BASS ISLAND, OH	12	
		MARBLEHEAD, OH	LAKE ERIE	KELLYS ISLAND, OH	12	
		MARBLEHEAD, OH	LAKE ERIE	KELLYS ISLAND, OH	12	
		SANDUSKY, OH	LAKE ERIE	KELLYS ISLAND, OH	12	
		MARBLEHEAD	LAKE ERIE	KELLYS ISLAND, OH	12	
SISTERSVILLE	NCA BRIDGE	FLY, OH	OHIO-WEST VIRGINIA OHIO RIVER	SISTERSVILLE, WV	11	PRIVATE
SANDUSKY	PELEE ISLAND TRANSPORTATION CO.	SANDUSKY, OH	OHIO-CANADA LAKE ERIE	KINGSVILLE AND LEAMINGTON, ON	11	JUNE TO SEPTEMBER, PRIVATE
WHEATLAND FERRY	MARION COUNTY ROAD DEPARTMENT	WHEATLAND RD, YAMHILL CO.	OREGON WILLAMETTE	DANIEL MATHENY RD. MARION CO.	11	CABLE FERRY; OPEN 8AM-9:45PM
BUENA VISTA FERRY	MARION COUNTY ROAD DEPARTMENT	RIVER ROAD, MARION CO.	WILLAMETTE	BUENA VISTA, POLK CO.	11	CABLE FERRY; OPEN 8AM-8PM
CANBY FERRY	CLACKAMAS COUNTY ROAD DEPARTMENT	MOUNTAIN ROAD, CLACKAMAS CO.	WILLAMETTE	MOUNTAIN ROAD, CLACKAMAS CO.	11	CABLE FERRY; OPEN 8:30AM-9PM DAILY
PUGET ISLAND	WAHKIAKUM COUNTY, WA	WESTPORT, OR	OREGON-WASHINGTON COLUMBIA RIVER	PUGET ISLAND, WA	11	
FREDERICKTOWN	FAYETTE/WASHINGTON CO. JOINT FERRY SERVICE	FREDERICKTOWN, PA	PENNSYLVANIA MONONGAHELA RIVER	E. FREDERICKTOWN & LABELLE, PA	11	
MILLERSBURG	FERRYBOAT CAMPSITES, INC.	MILLERSBURG, PA	SUSQUEHANNA RIVER	MAPLE GROVE, PA	11	PRIVATE
DOMINICAN FERRY	DOMINICAN FERRIES	MAYAGUEZ, PR	PUERTO RICO & DOMINICAN REPUBLIC MONA CHANNEL	SAN PEDRO DE MACORIS, DOM. REP.	12	
BRISTOL	PRUDENCE ISLAND NAVIGATION CO.	BRISTOL, RI	RHODE ISLAND NARRAGANSETT BAY	PRUDENCE & HOG ISLANDS, RI	11	PRIVATE
PROVIDENCE	INTERSTATE NAVIGATION CO.	PROVIDENCE, RI	RHODE ISLAND SOUND	BLOCK ISLAND, RI	05	JUNE THROUGH SEPTEMBER PRIVATE MILEAGE NOT INCLUDED IN FED-AID SYSTEM (SERVICE TEMPORARILY INTERRUPTED)
POINT JUDITH	INTERSTATE NAVIGATION CO.	POINT JUDITH, RI	BLOCK ISLAND SOUND	BLOCK ISLAND, RI	05	PRIVATE

VEHICULAR TOLL FERRIES IN THE UNITED STATES
(IN OPERATION, UNDER CONSTRUCTION, OR FINANCED AS OF JAN. 1, 1990)

TABLE T-1
PART 6
PAGE 6 OF 6

NAME OF FERRY 1/	FINANCING OR OPERATING AUTHORITY	LOCATION			ROAD SYSTEM CODE 2/	REMARKS
		FROM	BODY OF WATER CROSSING	TO		
CUMBERLAND CITY SALTILLO CLIFTON BLYTHE'S WASHINGTON	TENNESSEE DEPT. OF TRANSPORTATION HARDIN COUNTY, TN TENNESSEE DEPT. OF TRANSPORTATION BLYTHE FERRY COMPANY CHARLES H. SMITH	CUMBERLAND CITY, TN	TENNESSEE CUMBERLAND RIVER	THROCKMORTON, TN	05	PRIVATE PRIVATE
		SALTILLO, TN	TENNESSEE RIVER	SALTILLO, TN	11	
		CLIFTON, TN	TENNESSEE RIVER	BATH SPRINGS, TN	05	
		DAYTON, TN	TENNESSEE RIVER	BIRCHWOOD, TN	05	
		WASHINGTON, TN	TENNESSEE RIVER	DECATUR, TN	03	
LOS EBANOS	ALBERT SIMO	LOS EBANOS, TX	TEXAS-MEXICO RIO GRANDE RIVER	MEXICAN HIGHWAY #2	11	PRIVATE
JOHN ATLANTIC BURR	UTAH DEPT. OF TRANSPORTATION	BULLFROG, UT	UTAH LAKE POWELL	HALLS CROSSING, UT	09	OPERATES 12 HRS MAY-OCT; 8 HRS NOV-APR
JAMESTOWN	VIRGINIA DEPT. OF TRANSPORTATION	SCOTLAND, VA	VIRGINIA JAMES RIVER	JAMESTOWN, VA	05	
SEATTLE - WINSLOW	WASHINGTON TRANSPORTATION COMMISSION	SEATTLE, WA	WASHINGTON PUGET SOUND	WINSLOW, WA	03	
SEATTLE - BREMERTON	WASHINGTON TRANSPORTATION COMMISSION	SEATTLE, WA	PUGET SOUND	BREMERTON, WA	04	
EDMONDS - KINGSTON	WASHINGTON TRANSPORTATION COMMISSION	EDMONDS, WA	PUGET SOUND	KINGSTON, WA	03	
PORT TOWNSEND - KEYSTONE	WASHINGTON TRANSPORTATION COMMISSION	PORT TOWNSEND, WA	PUGET SOUND	KEYSTONE, WA	03	
MUKILTEO - CLINTON	WASHINGTON TRANSPORTATION COMMISSION	MUKILTEO, WA	PUGET SOUND	CLINTON, WA	03	
PT. DEFIANCE-TAHLEQUAH	WASHINGTON TRANSPORTATION COMMISSION	PT. DEFIANCE, WA	PUGET SOUND	TAHLEQUAH, WA	05	
FAUNTLEROY - SOUTHWORTH	WASHINGTON TRANSPORTATION COMMISSION	FAUNTLEROY, WA	PUGET SOUND	SOUTHWORTH, WA	03	
FAUNTLEROY - VASHON	WASHINGTON TRANSPORTATION COMMISSION	FAUNTLEROY, WA	PUGET SOUND	VASHON ISLAND, WA	03	
SOUTHWORTH - VASHON	WASHINGTON TRANSPORTATION COMMISSION	SOUTHWORTH, WA	PUGET SOUND	VASHON ISLAND, WA	03	
ANACORTES-SAN JUAN ISLES	WASHINGTON TRANSPORTATION COMMISSION	ANACORTES, WA	PUGET SOUND	SAN JUAN ISLANDS, WA	03	
GUEMES ISLAND	SKAGIT COUNTY	ANACORTES, WA	PUGET SOUND	GUEMES ISLAND, WA	07	
LUMMI ISLAND	WHATCOM COUNTY	GOOSEBERRY, WA	PUGET SOUND	LUMMI ISLAND, WA	07	
STEILACOOM	PIERCE COUNTY	STEILACOOM, WA	PUGET SOUND	ANDERSON & KETRON ISLANDS, WA	07	
ANACORTES-SIDNEY	WASHINGTON TRANSPORTATION COMMISSION	ANACORTES, WA	WASHINGTON-CANADA PUGET SOUND	SIDNEY, BC	03	
PORT ANGELES	BLACK BALL TRANSPORT, INC.	PORT ANGELES, WA	PUGET SOUND	VICTORIA, BC	11	
SEATTLE	BRITISH COLUMBIA STEAMSHIP CO., LTD.	SEATTLE, WA	PUGET SOUND	VICTORIA, BC	11	
WASHINGTON ISLAND	WASHINGTON ISLAND FERRY LINE, INC.	WASHINGTON ISLE, WI	WISCONSIN GREEN BAY	GILLS ROCK, WI	03	PRIVATE
BAYFIELD	MADLINE ISLAND FERRIES, INC.	BAYFIELD, WI	LAKE SUPERIOR	LA POINTE, WI	07	PRIVATE
FAJARDO-VIEQUES-CULEBRA	PUERTO RICO PORT AUTHORITY	FAJARDO, PR	PUERTO RICO VIEQUES SOUND	VIEQUES-CULEBRA ISLES	05	
SUMMARY OF VEHICULAR TOLL FERRIES IN THE UNITED STATES		1/ OMITTED ARE FERRIES PROVIDING EXCLUSIVE SERVICE FOR PASSENGERS AND FOR FREIGHT				
ROAD SYSTEM	GRAND TOTAL	NUMBER OF FERRIES	2/ ROAD SYSTEM CODES:			
03 & 04	27	19 PUBLIC; 8 PRIVATE	RURAL	URBAN		
05	25	16 PUBLIC; 9 PRIVATE	01 - INTERSTATE SYSTEM	02 - INTERSTATE SYSTEM		
09 & 10	7	6 PUBLIC; 1 PRIVATE	03 - OTHER FED-AID PRIMARY	04 - OTHER FED-AID PRIMARY		
11 & 12	61	28 PUBLIC; 33 PRIVATE	05 - FED-AID SECONDARY ON STATE HIGHWAYS	10 - OTHER STATE ADMINISTERED HIGHWAYS		
14	28	-- ; 1 PRIVATE	07 - FED-AID SECONDARY OFF STATE HIGHWAYS	12 - OTHER LOCAL CITY STREETS		
TOTAL	121	69 PUBLIC; 52 PRIVATE	09 - OTHER STATE ADMINISTERED HIGHWAYS	14 - FED-AID URBAN		
			11 - OTHER LOCAL ROADS			
WHERE THE ROAD SYSTEM CODE DIFFERS FROM ONE TERMINAL TO THE OTHER, THE CODE OF THE HIGHER LEVEL FACILITY IS USED.						

OTHER SUGGESTED TOLL FACILITIES
(UNDER CONSIDERATION, PLANNING, OR FINANCING AS OF JAN. 1, 1990)

TABLE T-2
PAGE 1 OF 2

NAME OF FACILITY 1/	AUTHORITY	LOCATION		LENGTH (MILES)	ESTIMATED COST (MILLIONS OF DOLLARS)
		FROM	TO		
ROADS					
COLORADO					
W-470 FRONT RANGE TOLL ROAD	W-470 PUBLIC HIGHWAY AUTHORITY FRONT RANGE TOLL ROAD COMPANY	1 MILE S. OF I-25 & SH7	I-70 & C-470	26.0	
		I-25 S. OF PUEBLO	I-25 N. OF FT. COLLINS	210	
DELAWARE					
DEL. 1	DELAWARE DEPT. OF TRANSPORTATION	I-95	DOVER 4/	50.0 2/	500.0
FLORIDA					
OVERSEAS HIGHWAY TOLL ROAD	FLORIDA DEPT. OF TRANSPORTATION	FLORIDA COASTLINE	FLORIDA KEYS		
GEORGIA					
GEORGIA 400 EXTENSION	GEORGIA DEPT. OF TRANSPORTATION GEORGIA STATE TOLLWAY AUTHORITY	GLENRIDGE CONNECTOR ATLANTA, GA	I-285, FULTON CO.	6.2	288.0
KANSAS					
US 69	KANSAS TURNPIKE AUTHORITY	KANSAS CITY	BAXTER SPRINGS	161.0	120.0
PORT OF CATOOSA	KANSAS TURNPIKE AUTHORITY	WICHITA	STATE LINE	64.0	53.0
SOUTHEAST KANSAS	KANSAS TURNPIKE AUTHORITY	WICHITA	MISSOURI STATE LINE	185.0	—
TURNPIKE	KANSAS TURNPIKE AUTHORITY	OTTAWA	OKLAHOMA STATE LINE	128.0	—
TURNPIKE	KANSAS TURNPIKE AUTHORITY	US 54 & 154	COLORADO STATE LINE	156.0	—
TURNPIKE	KANSAS TURNPIKE AUTHORITY	LEON	FREDONIA	76.0	—
TURNPIKE	KANSAS TURNPIKE AUTHORITY	WICHITA	LIBERAL	212.0	—
TURNPIKE	KANSAS TURNPIKE AUTHORITY	WICHITA	HAYS	175.0	—
PENNSYLVANIA					
MON-VALLEY EXPRESSWAY US 219	PENNSYLVANIA TURNPIKE COMMISSION PENNSYLVANIA TURNPIKE COMMISSION	PITTSBURGH	WV STATE LINE	50.0	—
		TURNPIKE	I-80	85.0	—
SOUTH CAROLINA					
COOPER RIVER CROSSING	SC DEPT. OF HIGHWAYS & PUBLIC TRANSPORTATION	CHARLESTON	MT. PLEASANT	2.0	230.0 - 435.0
CROSS ISLAND ROUTE 3/	SC DEPT. OF HIGHWAYS & PUBLIC TRANSPORTATION	US 278 NORTH OF HILTON HEAD ISLAND	US 278 AT POPE AVENUE	5.0	33.0
		I-95/MYRTLE BEACH CONNECTION	US 17 NEAR MYRTLE BEACH	70.0	500.0 4/
TEXAS					
SAM HOUSTON TOLLWAY HOUSTON	TEXAS TURNPIKE AUTHORITY TEXAS TURNPIKE AUTHORITY	I-45 S. OF WEBSTER	W. I-45 N. OF HOUSTON AIRPORT	29.5	250.0
		HOUSTON ARTERY		31.8	—
VIRGINIA					
SOUTHEASTERN EXPRESSWAY DULLES TOLL ROAD EXTENSION	VIRGINIA DEPT OF TRANSPORTATION TOLL ROAD CORP. OF VIRGINIA	I-64 & I-264 IN CHESAPEAKE	RT. 44, VA BEACH- NORFOLK EXPRESSWAY	21.0	545.0
		DULLES INT'L AIRPORT	RT. 7 & 15 BYPASS (LEESBURG)	13.0	158.0

OTHER SUGGESTED TOLL FACILITIES
(UNDER CONSIDERATION, PLANNING OR FINANCING AS OF JAN. 1 1990)

TABLE T-2
PAGE 2 OF 2

NAME OF FACILITY 1/	AUTHORITY	LOCATION		LENGTH (MILES)	ESTIMATED COST (MILLIONS OF DOLLARS)
		FROM	TO		
TUNNELS					
BERTHOUD TUNNEL	BERTHOUD TUNNEL BUILDING AUTHORITY	US 40 NEAR EMPIRE	W. OF BERTHOUD PASS	4.0	
3RD HARBOR TUNNEL	MASSACHUSETTS TURNPIKE AUTHORITY	BOSTON	EAST BOSTON	2.9	1528.9
BRIDGES					
GRAMERCY BR CROSSING MISSISSIPPI RIVER	LOUISIANA DEPT OF TRANSPORTATION & DEVELOPMENT	ST. JAMES PARISH	ST. JOHN PARISH	0.6	
CALHOUN STREET	DELAWARE RIVER JOINT TOLL BRIDGE COMMISSION	TRENTON, NEW JERSEY	MORRISVILLE, PA	0.4	
FERRIES					
NOT YET CHOSEN	ALASKA DEPT. OF TRANS. & PUBLIC FINANCE, AMHS	KETCHIKAN, AK	PRINCE OF WALES ISLAND		
NOT YET CHOSEN	ALASKA DEPT. OF TRANS. & PUBLIC FINANCE, AMHS	JUNEAU, AK	SITKA, AK		
NOT YET CHOSEN	ALASKA DEPT. OF TRANS. & PUBLIC FINANCE, AMHS	JUNEAU, AK	SKAGWAY, AK		
MISSISSIPPI RIVER	LOUISIANA DEPT. OF TRANS. & DEV.	ALGIERS	CHALMETTE		
MISSISSIPPI RIVER	LOUISIANA DEPT. OF TRANS. & DEV.	NEW ORLEANS	ALGIERS		
MISSISSIPPI RIVER	LOUISIANA DEPT. OF TRANS. & DEV.	NEW ORLEANS	GRETNA		
MISSISSIPPI RIVER	LOUISIANA DEPT. OF TRANS. & DEV.	REBERVE	EDGARD		
MISSISSIPPI RIVER	LOUISIANA DEPT. OF TRANS. & DEV.	WHITE CASTLE	CARVILLE		
MISSISSIPPI RIVER	LOUISIANA DEPT. OF TRANS. & DEV.	PLAQUEMINE	SUNSHINE		
MISSISSIPPI RIVER	LOUISIANA DEPT. OF TRANS. & DEV.	NEW ROADS	ST. FRANCISVILLE		
MISSISSIPPI RIVER	LOUISIANA DEPT. OF TRANS. & DEV.	ANGOLA	POINTE COUPEE PARISH		
ATCHAFALAYA RIVER	LOUISIANA DEPT. OF TRANS. & DEV.	MELVILLE	POINTE COUPEE PARISH		
OUACHITA RIVER FERRY	LOUISIANA DEPT. OF TRANS. & DEV.	DUTY	CALDWELL PARISH		
CALCASIEU RIVER	LOUISIANA DEPT. OF TRANS. & DEV.	CAMERON	MONKEY ISLAND		
CALCASIEU SHIP CHANNEL FERRY	LOUISIANA DEPT. OF TRANS. & DEV.	CAMERON	W. CALCASIEU PARISH		
ALLENPORT COAL CENTER		ALLENPORT COAL CENTER	FAYETTE CITY NEWELL		
<p>1/ THIS TABLE LISTS THOSE TOLL FACILITIES KNOWN TO HAVE BEEN RECOMMENDED FOR FEASIBILITY STUDY BY STATE GOVERNORS, HIGHWAY DEPARTMENTS, LEGISLATIVE COMMITTEE. THOSE MARKED WITH AN ASTERISK HAVE BEEN AUTHORIZED FOR CONSTRUCTION BY THE RESPECTIVE STATE LEGISLATURES OR TOLL AUTHORITIES</p> <p>2/ TOLL PORTION WILL EXTEND FROM STATE ROUTE 72 AT WRANGLE HILL TO US 113 SE. OF DOVER, A DISTANCE ROUGHLY 35 MILES.</p> <p>3/ INCLUDES BRIDGE OVER BROAD CREEK.</p> <p>4/ NOT ALL TO BE PAID BY TOLL.</p>					



