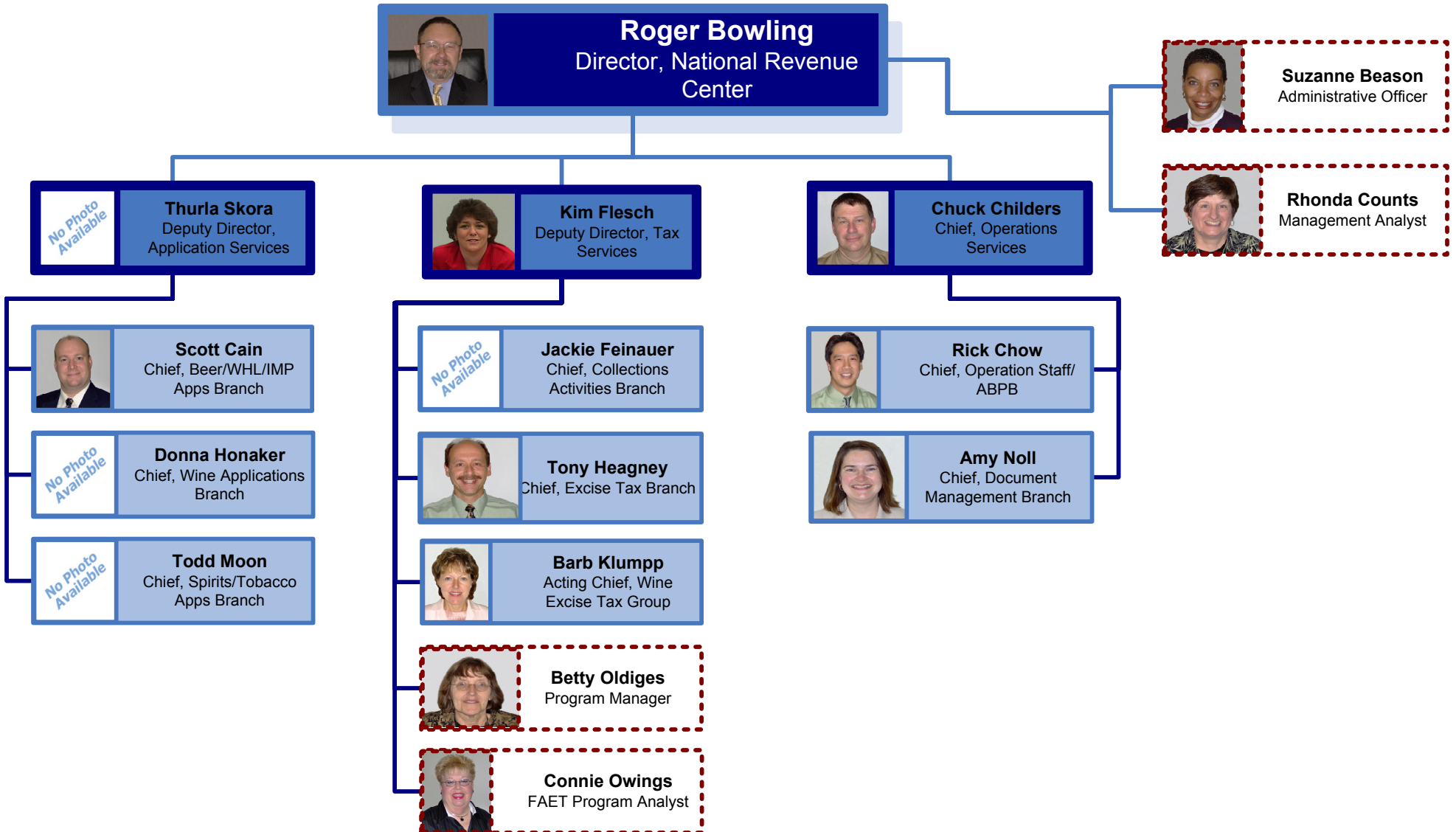
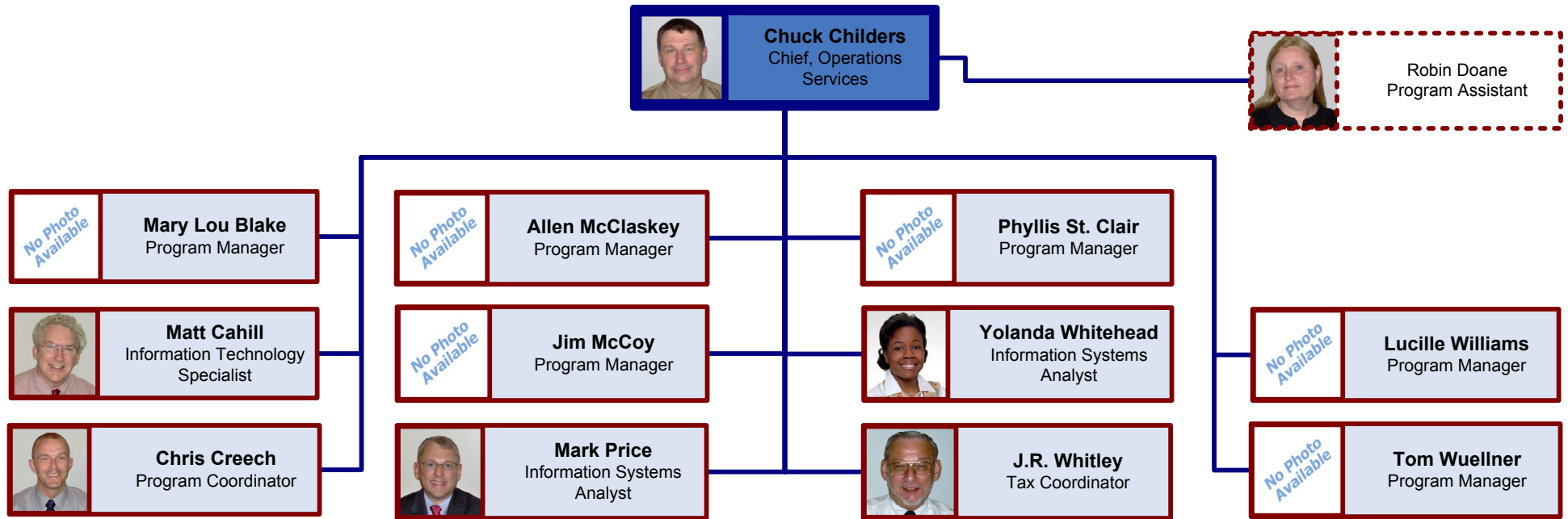


# NATIONAL REVENUE CENTER – (Director/Management)

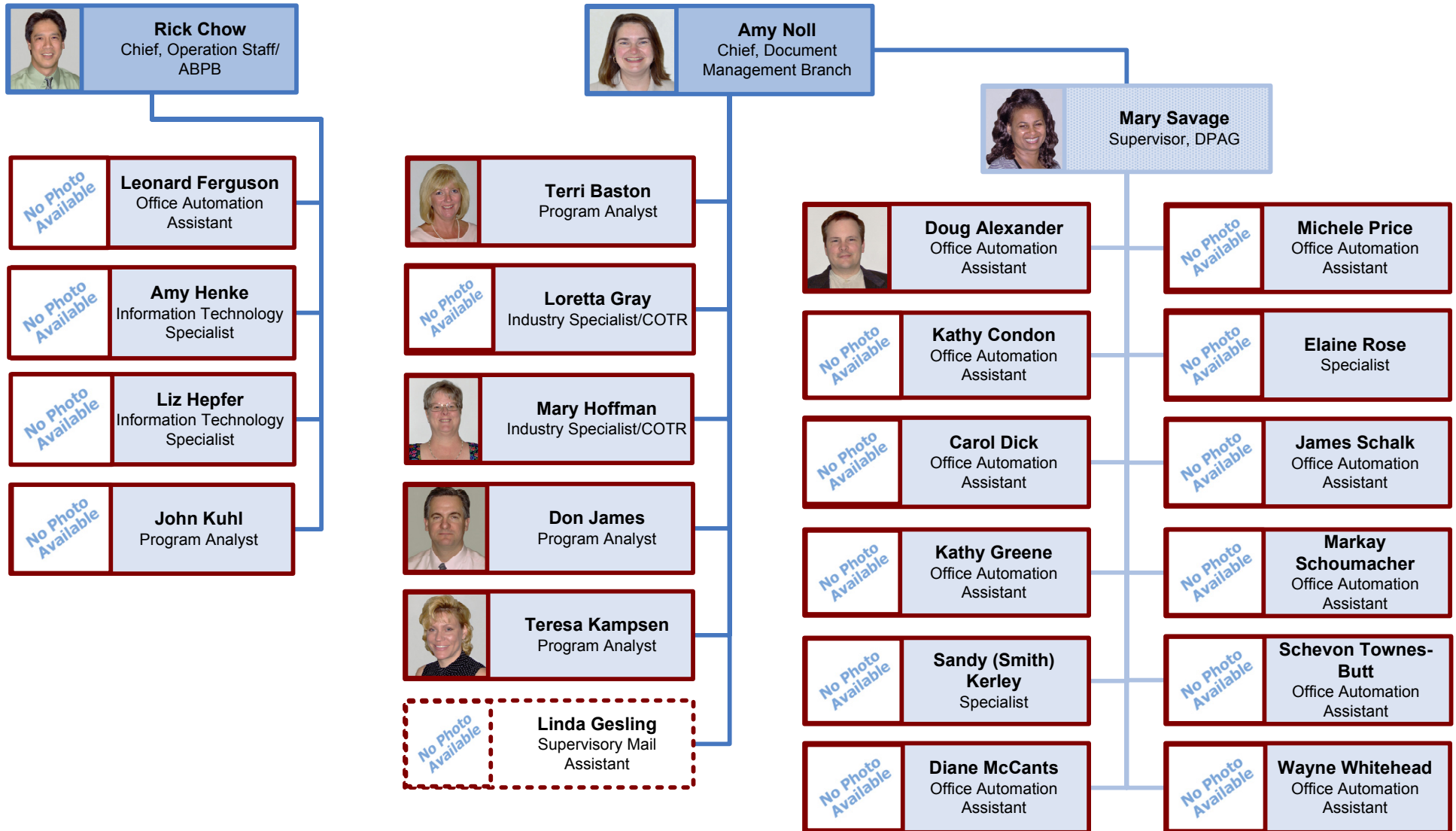
Tuesday, September 05, 2006





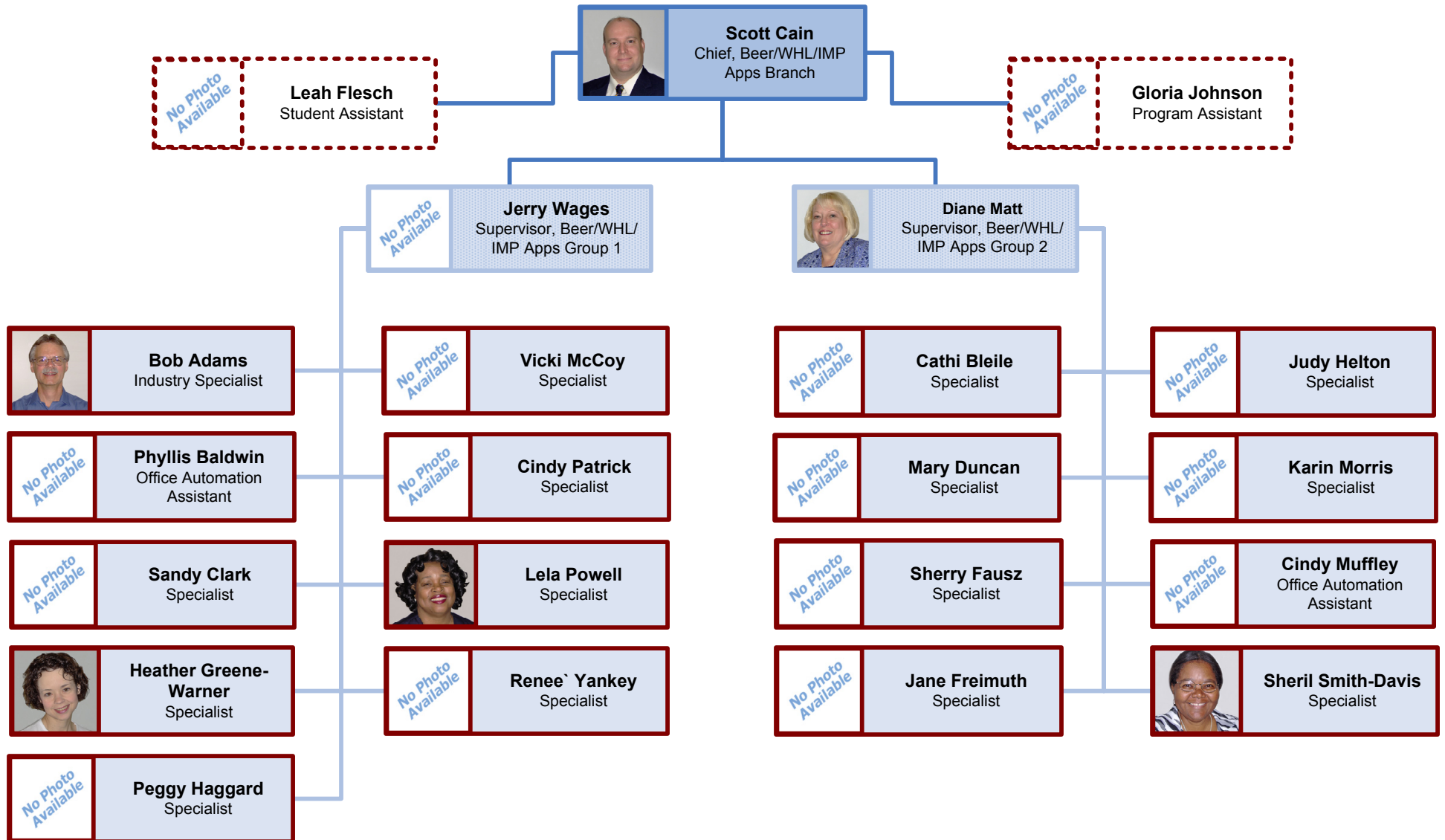
# NATIONAL REVENUE CENTER – (ABPB/Document Management)

Tuesday, September 05, 2006



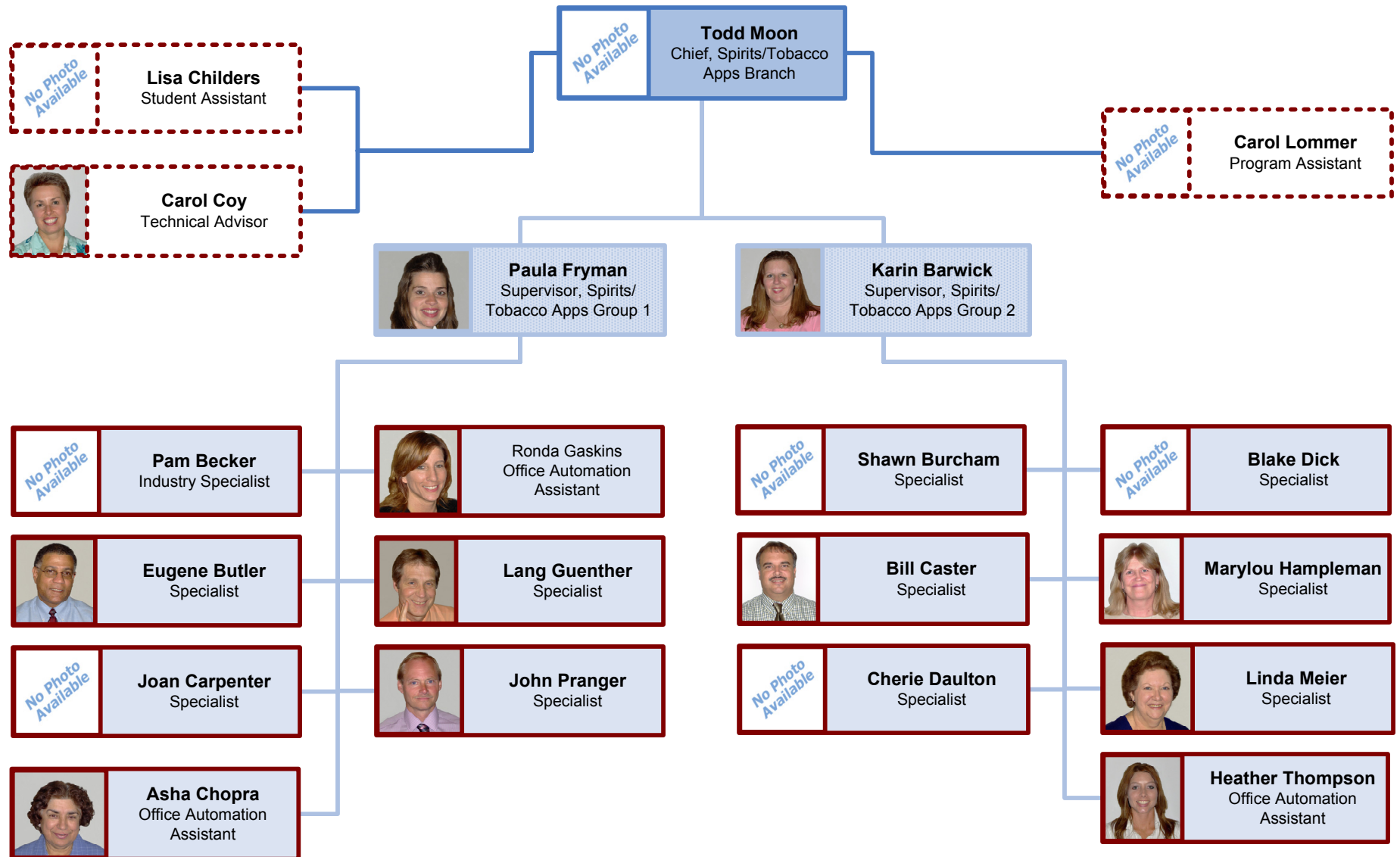
# NATIONAL REVENUE CENTER – (Beer/Wholesaler/Importer Applications Branch)

Tuesday, September 05, 2006



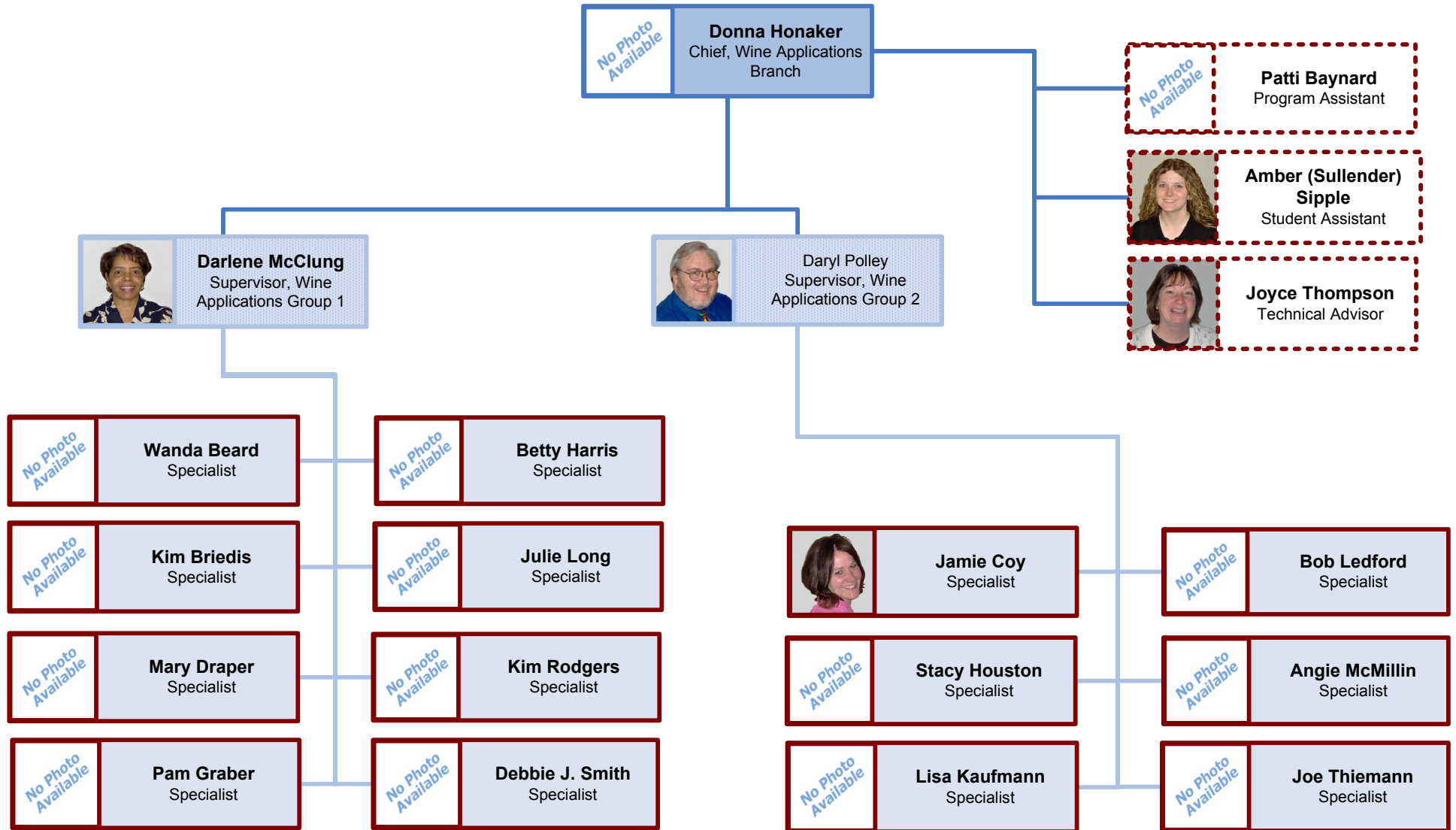
# NATIONAL REVENUE CENTER – (Spirits/Tobacco Applications Branch)

Tuesday, September 05, 2006



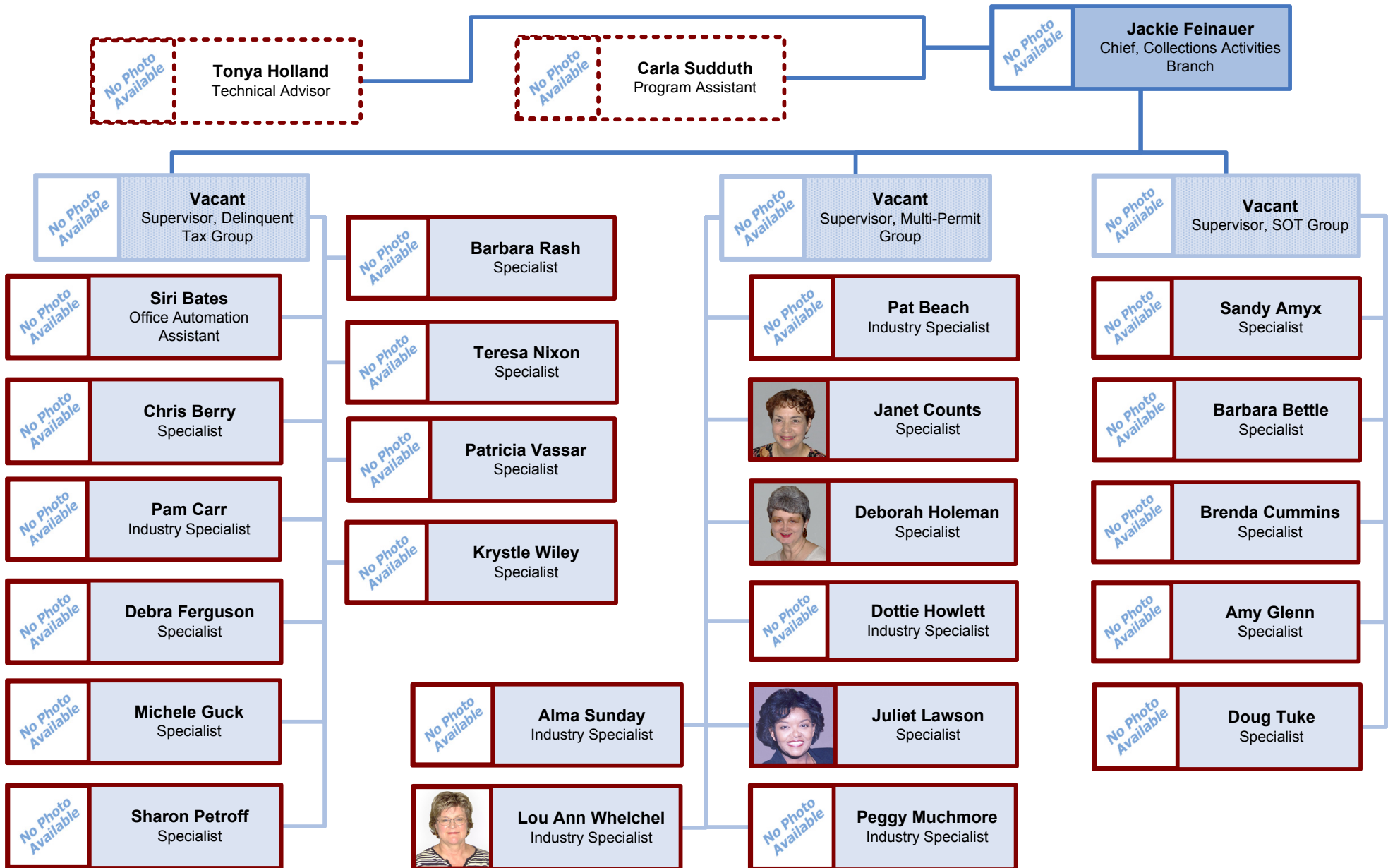
# NATIONAL REVENUE CENTER – (Wine Applications Branch)

Tuesday, September 05, 2006



# NATIONAL REVENUE CENTER – (Collections Activities Branch)

Tuesday, September 05, 2006



# NATIONAL REVENUE CENTER – (Excise Tax Branch – Pt I)

Tuesday, September 05, 2006

