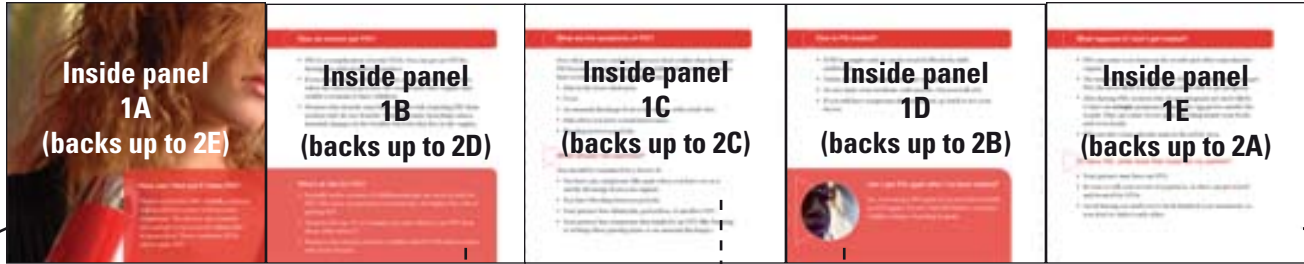


# Printing Specifications

<i>Job Title</i>	10-panel brochure ( <a href="#">Spanish version of Gonorrhea brochure</a> )
<i>Size</i>	29.75 x 6 inches flat, folding to 6 x 6 inches. Inside panel widths: 1A = 5.875"; 1B = 5.9375"; 1C = 6"; 1D = 6"; 1E = 5.9375". Outside panel widths: 2A = 5.9375"; 2B (BACK) = 6"; 2C(FRONT) = 6"; 2D = 5.9375"; 2E = 5.875".
<i>Pages</i>	2 pages (one sheet). Fold lines indicated on lo-res dummy pdf.
<i>Inks</i>	4c process + 1 PMS ( <a href="#">PMS 293C</a> ) plus flood satin aqueous coat (6/6).
<i>Quantity</i>	_____
<i>Stock</i>	65# bright white gloss cover. Please use gloss cover with satin aqueous for specific desired effect. If heavier stock is used, the fold lines will not be accurate.
<i>Photos/Duotones</i>	Yes
<i>Bleeds</i>	Yes
<i>Traps/Screens</i>	Yes. Trapping will be the sole responsibility of the print vendor. Purchaser will not be held liable if the printer fails to create good traps.
<i>Binding</i>	Fold (special fold—see printed sample to use as folding dummy) & trim. If heavier stock is used, the fold lines will not be accurate.
<i>Instructions</i>	<b>See the bright pink fold instructions on the lo-res dummy pdf included in this package. See folding instructions attached to this pdf.</b> The purchaser will also supply the printer with a printed sample to use as a dummy.
<i>Final Files / Art</i>	Print using the press-quality pdf ( <a href="#">SP05_Gonorrhea_press.pdf</a> ). Included in this package are 3 pdfs: 1. Lo-res pdf dummy ( <a href="#">SP05_Gonorrhea_dummy.pdf</a> ) 2. Press-quality pdf ( <a href="#">SP05_Gonorrhea_press.pdf</a> ) 3. Print specs.
<i>Proof</i>	Send one set of color proofs to the contact person below. Please include composite proof and folded-to-size proof for each brochure.
<i>Delivery</i>	_____
<i>Contact</i>	_____
	If you have specific questions or concerns which the contact person listed above is not able to answer, please contact the designer: Meryl Thomas , Palladian Partners, Inc. Phone: 301-650-8660; email: <a href="mailto:mthomas@palladianpartners.com">mthomas@palladianpartners.com</a>

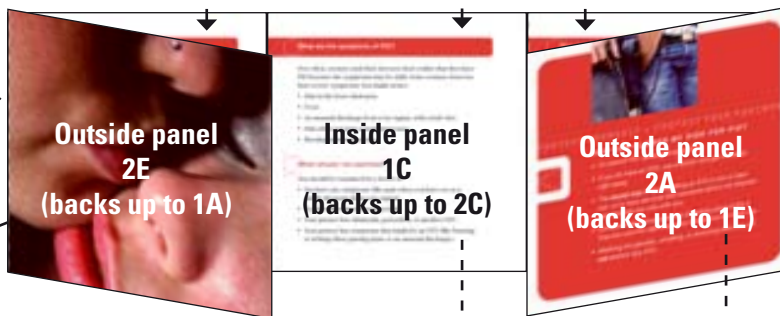
## General FOLDING INSTRUCTIONS for 10-Panel Brochures (Visuals on panels may not match specific brochure to be printed)

INSIDE (FLAT), PANELS 1A THROUGH 1E, BELOW



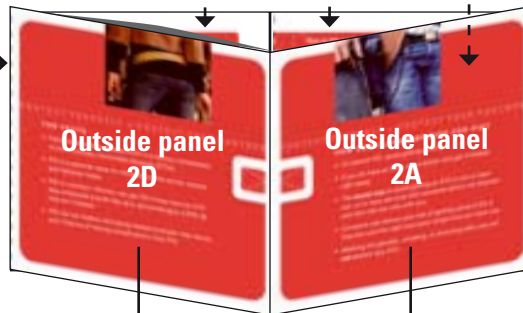
1A folds in once

1 E folds in once



Left panel folds in once again

Brochure looks like a fake gate fold at this point in the folding



These panels fold inward to reveal brochure front.

