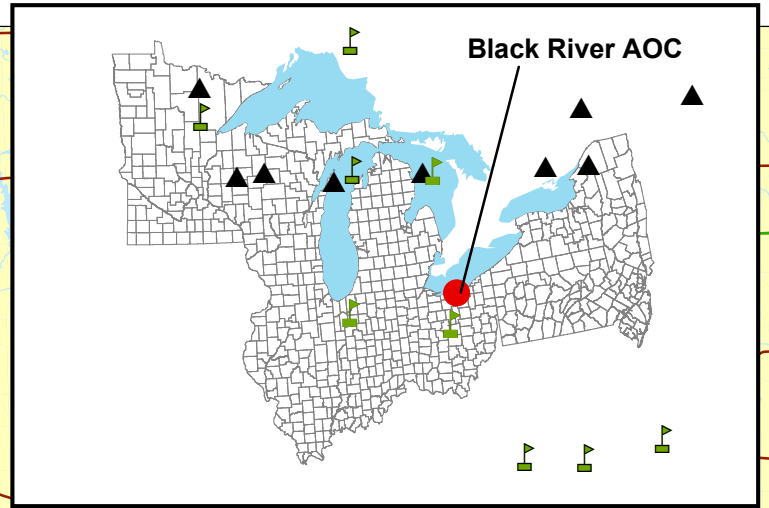
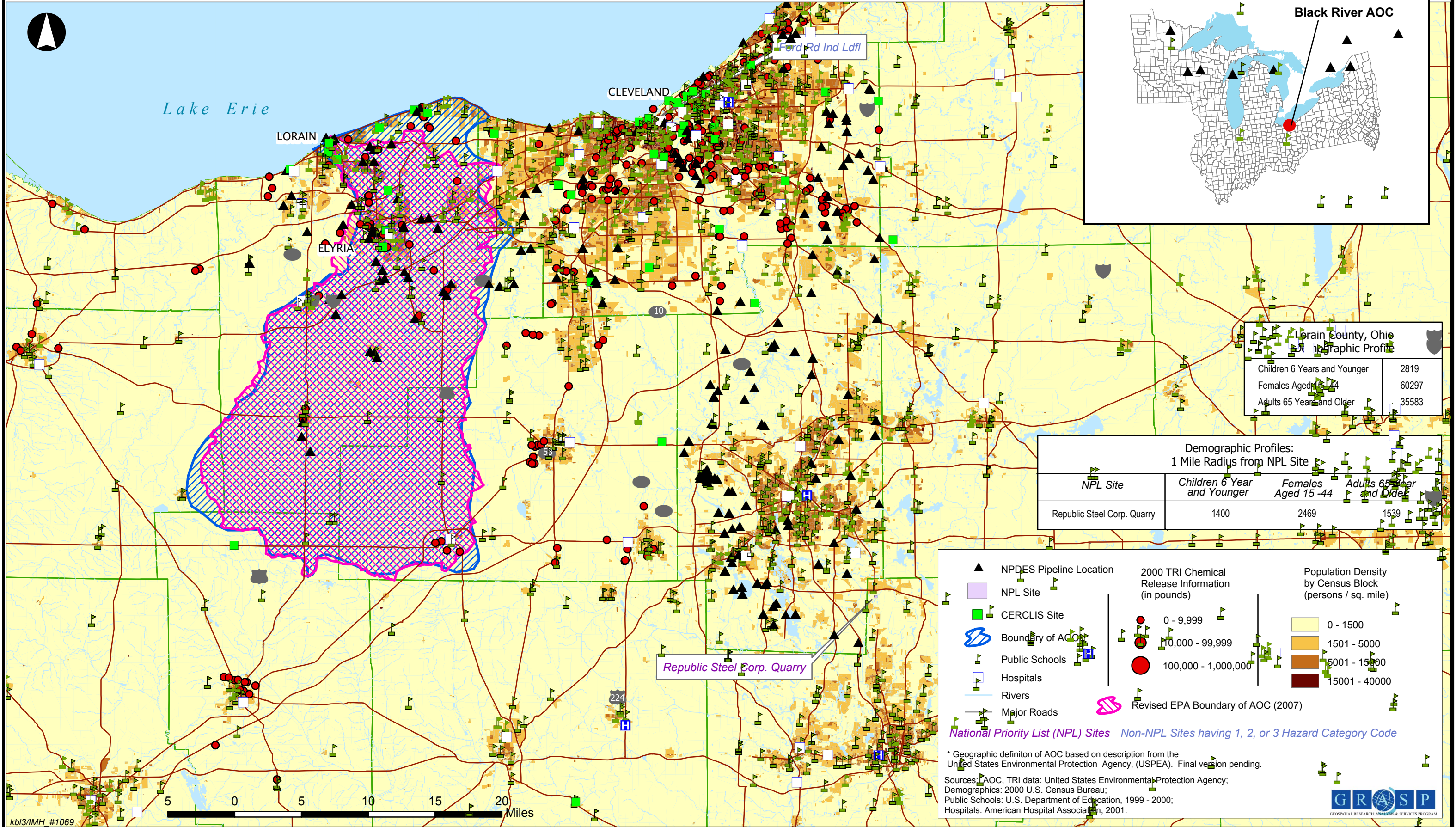


Black River Area of Concern Lorain County, Ohio

Great Lakes
Areas of Concern



Lorain County, Ohio
Demographic Profile

Children 6 Years and Younger	2819
Females Aged 15-44	60297
Adults 65 Years and Older	35583

Demographic Profiles:
1 Mile Radius from NPL Site

NPL Site	Children 6 Year and Younger	Females Aged 15-44	Adults 65 Year and Older
Republic Steel Corp. Quarry	1400	2469	1539

▲ NPDES Pipeline Location
 ■ NPL Site
 ■ CERCLIS Site
 Boundary of AOC
 Public Schools
 Hospitals
 Rivers
 Major Roads
 2000 TRI Chemical Release Information (in pounds)
 ● 0 - 9,999
 ● 10,000 - 99,999
 ● 100,000 - 1,000,000
 Population Density by Census Block (persons / sq. mile)
 0 - 1500
 1501 - 5000
 5001 - 15000
 15001 - 40000
 Revised EPA Boundary of AOC (2007)

National Priority List (NPL) Sites Non-NPL Sites having 1, 2, or 3 Hazard Category Code

* Geographic definition of AOC based on description from the United States Environmental Protection Agency, (USPEA). Final version pending.

Sources: AOC, TRI data: United States Environmental Protection Agency; Demographics: 2000 U.S. Census Bureau; Public Schools: U.S. Department of Education, 1999 - 2000; Hospitals: American Hospital Association, 2001.