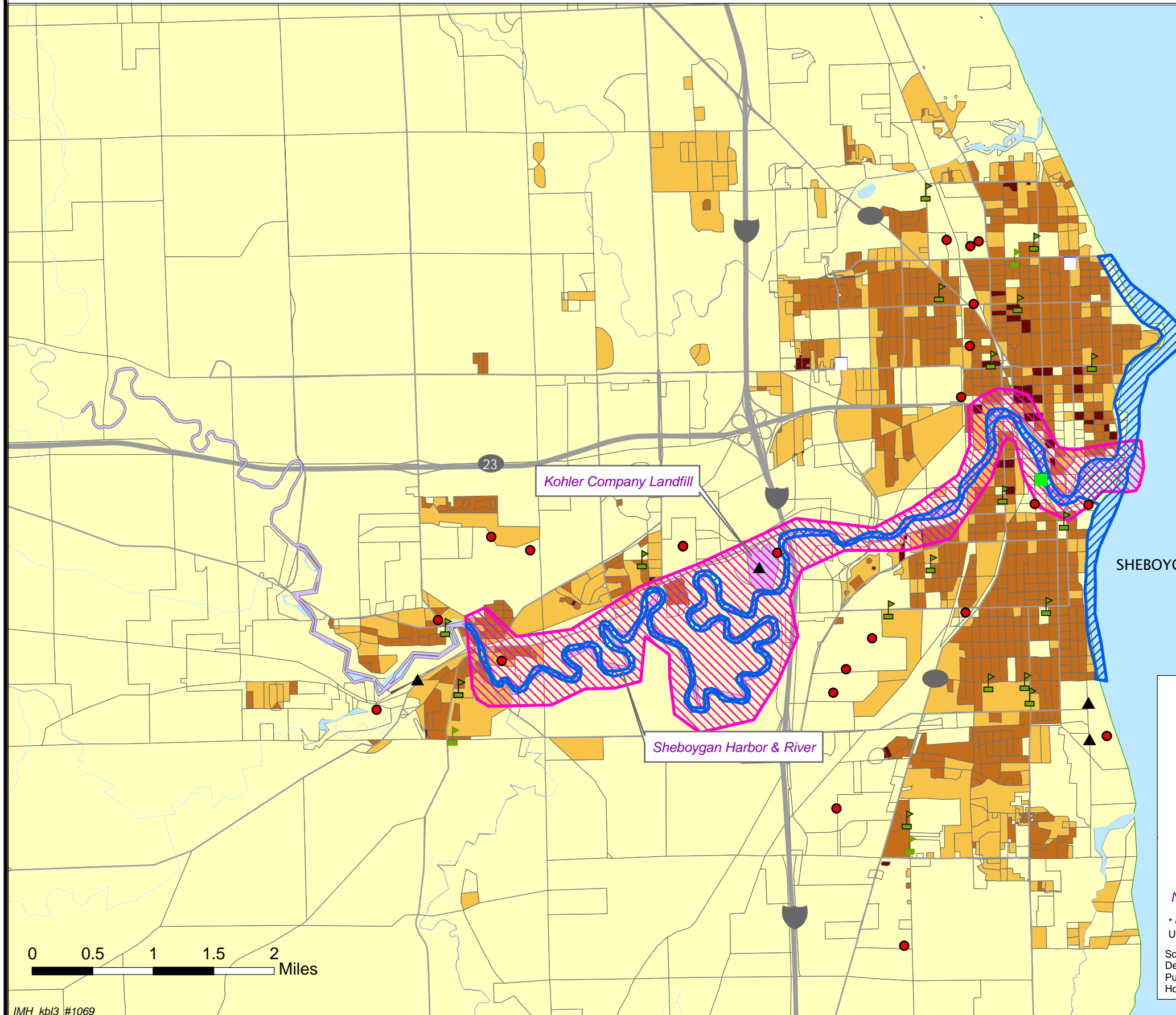


Sheboygan River Area of Concern Sheboygan County, Wisconsin

Great Lakes Areas of Concern



Sheboygan County, Michigan Demographic Profile	
Children 6 Years and Younger	1208
Females Aged 15 - 44	22869
Adults 65 Years and Older	15732

Lake Michigan

SHEBOYGAN

Demographic Profiles: 1 Mile Radius from NPL Site			
NPL Site	Children 6 Years and Younger	Females Aged 15 - 44	Adults 65 Year and Older
Kohler Company Landfill	119	310	18
Sheboygan Harbor and River	3837	8074	5354

▲ NPDES Pipeline Location	2000 TRI Chemical Release Information (in pounds)	Population Density by Census Block (persons / sq. mile)
■ NPL Site	● 0 - 999	■ 0 - 1500
■ CERCLIS Site	● 1000 - 99,999	■ 1501 - 5000
⊞ Boundary of AOC*	● 100,000 - 10,000,000	■ 5001 - 15000
⊞ Public Schools	⊞ Revised EPA Boundary of AOC (2007)	■ 15001 - 40000
□ Hospitals		
— Rivers		
— Major Roads		

National Priority List (NPL) Sites Non-NPL Sites having 1, 2, or 3 Hazard Category Code

* Geographic definition of AOC based on description from the United States Environmental Protection Agency, (USPEA). Final version pending.

Sources: AOC, TRI data: United States Environmental Protection Agency;
Demographics: 2000 U.S. Census Bureau;
Public Schools: U.S. Department of Education, 1999 - 2000;
Hospitals: American Hospital Association, 2001.

