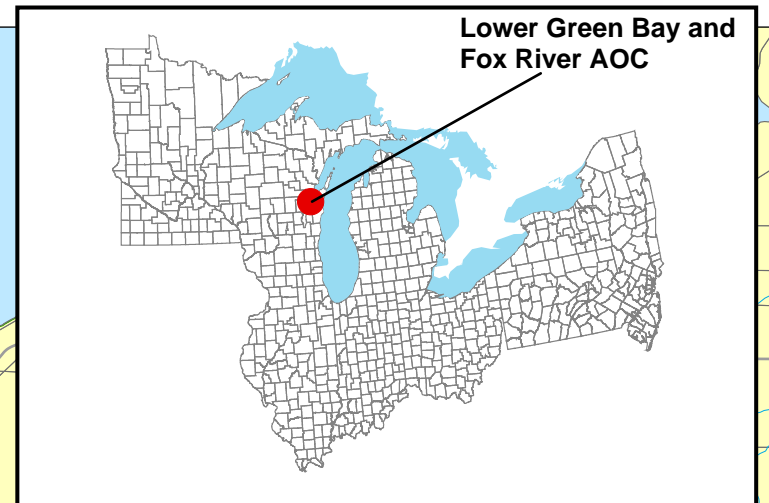


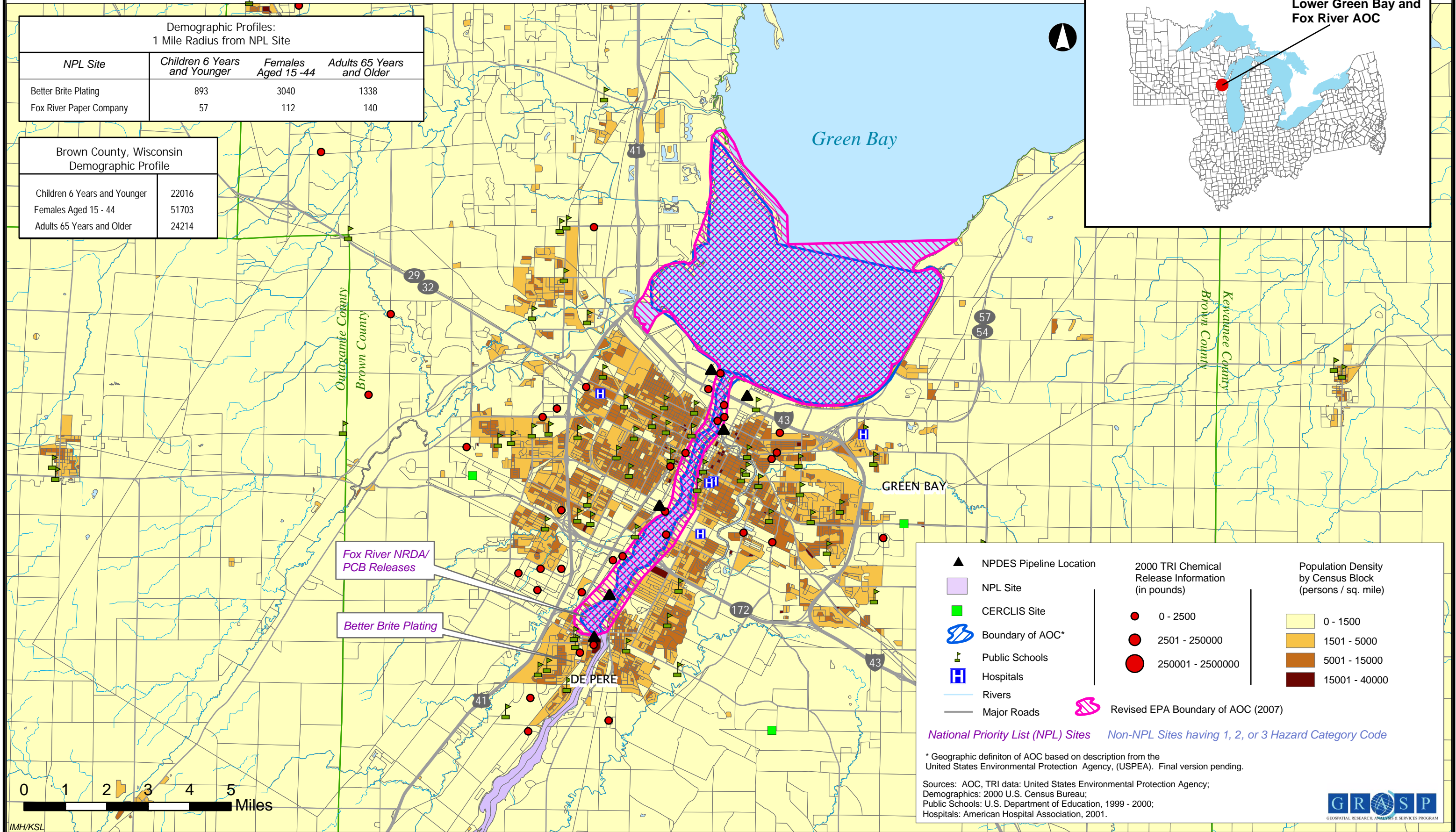
Lower Green Bay and Fox River Area of Concern Brown County, Wisconsin

Great Lakes Areas of Concern



Demographic Profiles: 1 Mile Radius from NPL Site			
NPL Site	Children 6 Years and Younger	Females Aged 15 - 44	Adults 65 Years and Older
Better Brite Plating	893	3040	1338
Fox River Paper Company	57	112	140

Brown County, Wisconsin Demographic Profile	
Children 6 Years and Younger	22016
Females Aged 15 - 44	51703
Adults 65 Years and Older	24214



▲ NPDES Pipeline Location	● 2000 TRI Chemical Release Information (in pounds)	Population Density by Census Block (persons / sq. mile)
■ NPL Site	● 0 - 2500	□ 0 - 1500
■ CERCLIS Site	● 2501 - 250000	■ 1501 - 5000
⊞ Boundary of AOC*	● 250001 - 2500000	■ 5001 - 15000
Ⓜ Public Schools		■ 15001 - 40000
Ⓜ Hospitals		
— Rivers		
— Major Roads	Ⓜ Revised EPA Boundary of AOC (2007)	

National Priority List (NPL) Sites Non-NPL Sites having 1, 2, or 3 Hazard Category Code

* Geographic definition of AOC based on description from the United States Environmental Protection Agency, (USPEA). Final version pending.

Sources: AOC, TRI data: United States Environmental Protection Agency;
Demographics: 2000 U.S. Census Bureau;
Public Schools: U.S. Department of Education, 1999 - 2000;
Hospitals: American Hospital Association, 2001.

