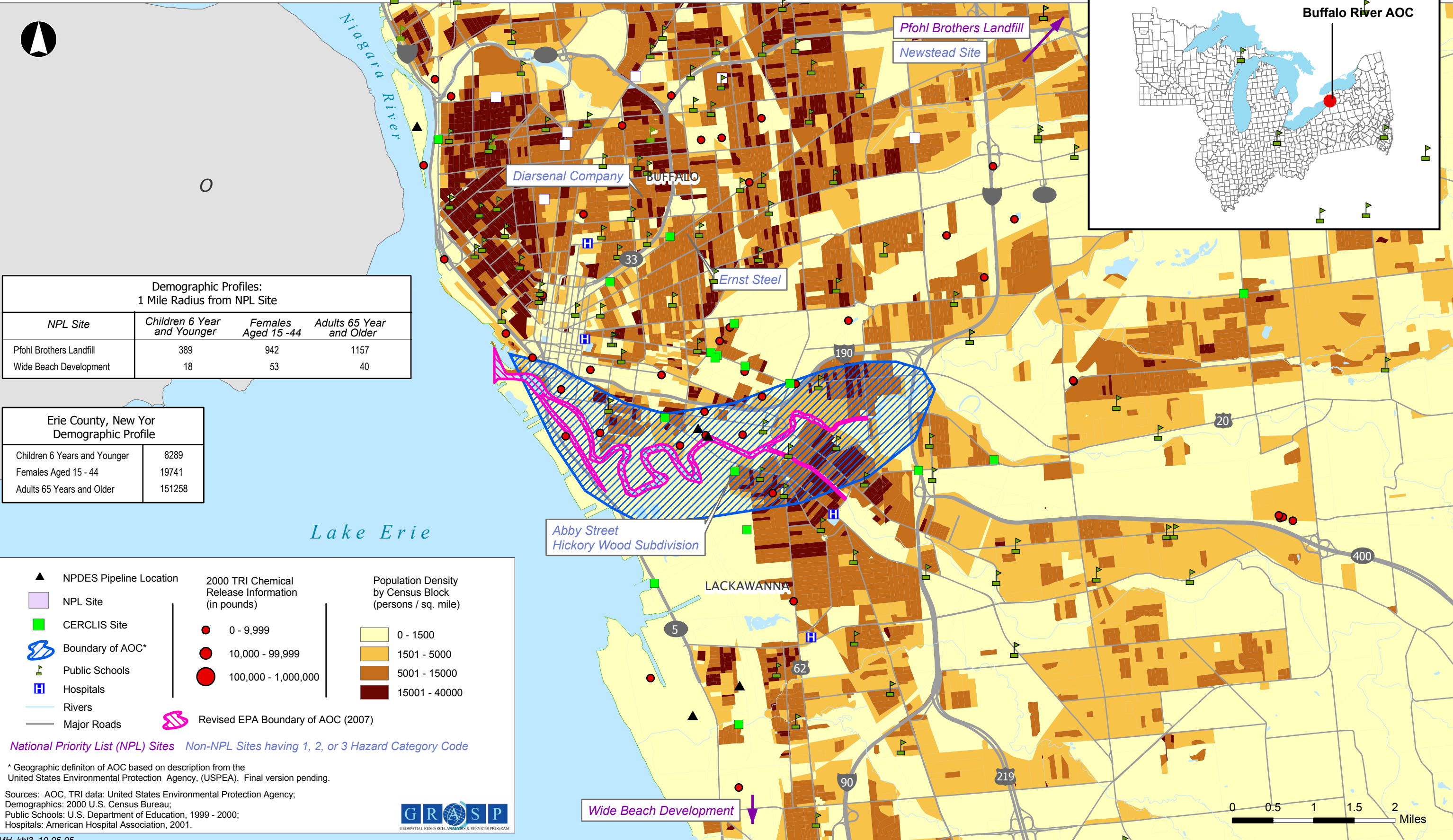
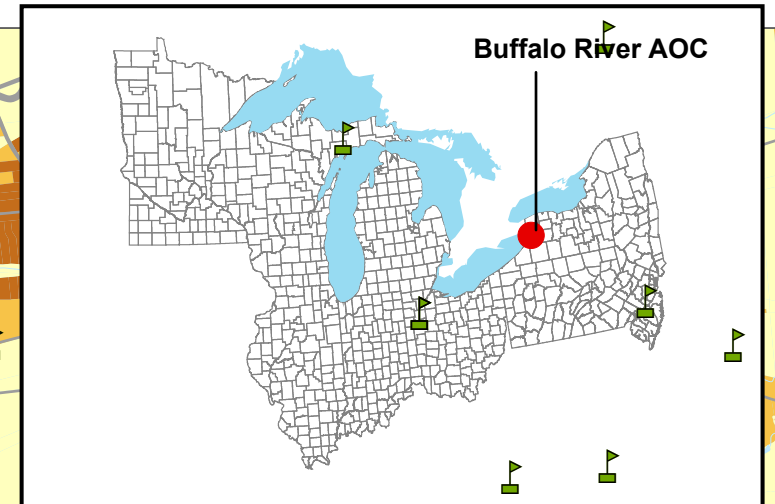


# Buffalo River Area of Concern Erie County, New York

Great Lakes  
Areas of Concern



Demographic Profiles:  
1 Mile Radius from NPL Site

NPL Site	Children 6 Year and Younger	Females Aged 15 -44	Adults 65 Year and Older
Pfohl Brothers Landfill	389	942	1157
Wide Beach Development	18	53	40

Erie County, New York  
Demographic Profile

Children 6 Years and Younger	8289
Females Aged 15 - 44	19741
Adults 65 Years and Older	151258

▲ NPDES Pipeline Location	2000 TRI Chemical Release Information (in pounds)	Population Density by Census Block (persons / sq. mile)
■ NPL Site	● 0 - 9,999	■ 0 - 1500
■ CERCLIS Site	● 10,000 - 99,999	■ 1501 - 5000
Boundary of AOC*	● 100,000 - 1,000,000	■ 5001 - 15000
Public Schools		■ 15001 - 40000
Hospitals		
Rivers		
Major Roads		
	Revised EPA Boundary of AOC (2007)	

National Priority List (NPL) Sites Non-NPL Sites having 1, 2, or 3 Hazard Category Code

\* Geographic definition of AOC based on description from the United States Environmental Protection Agency, (USPEA). Final version pending.

Sources: AOC, TRI data: United States Environmental Protection Agency;  
Demographics: 2000 U.S. Census Bureau;  
Public Schools: U.S. Department of Education, 1999 - 2000;  
Hospitals: American Hospital Association, 2001.

