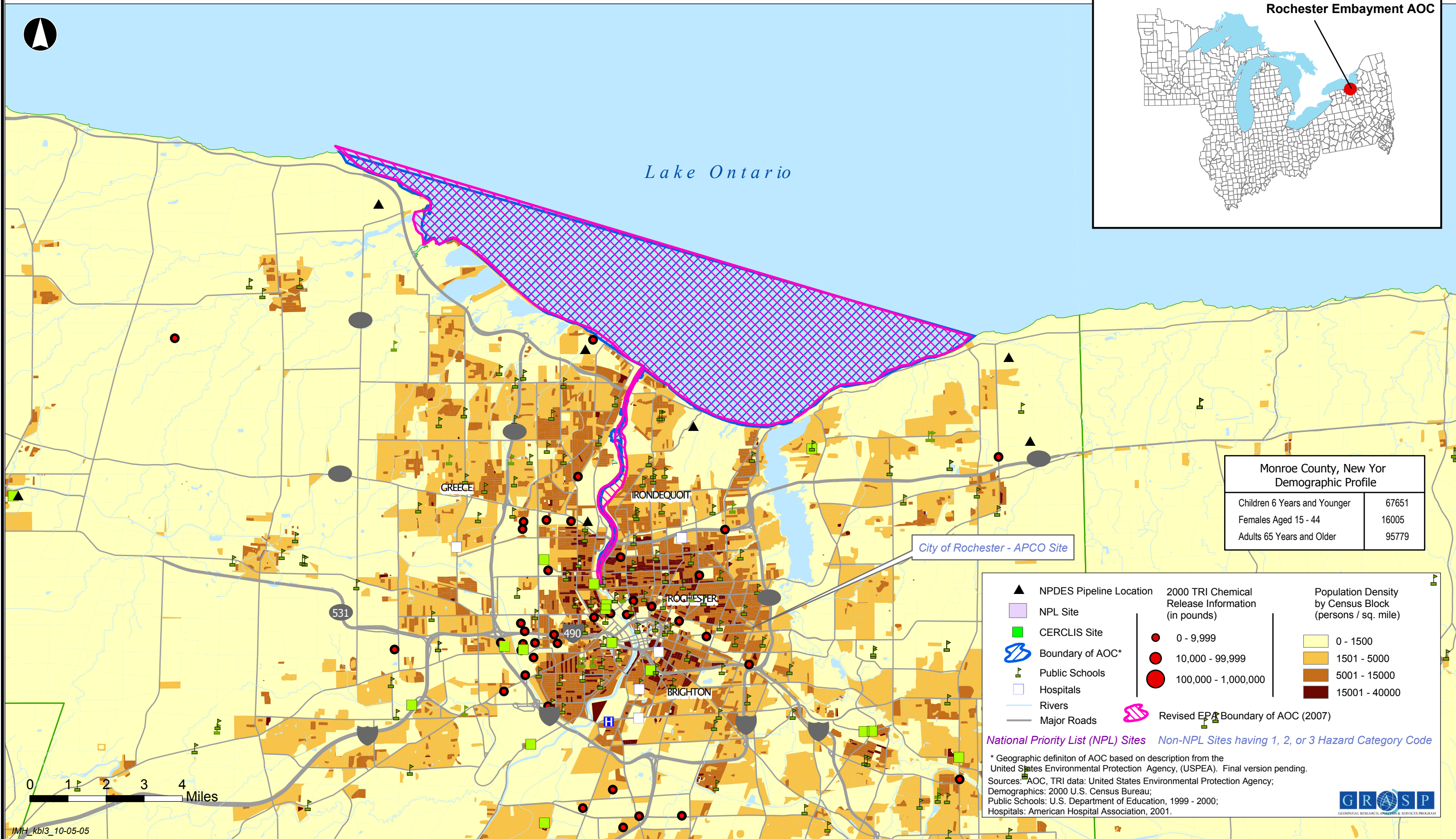
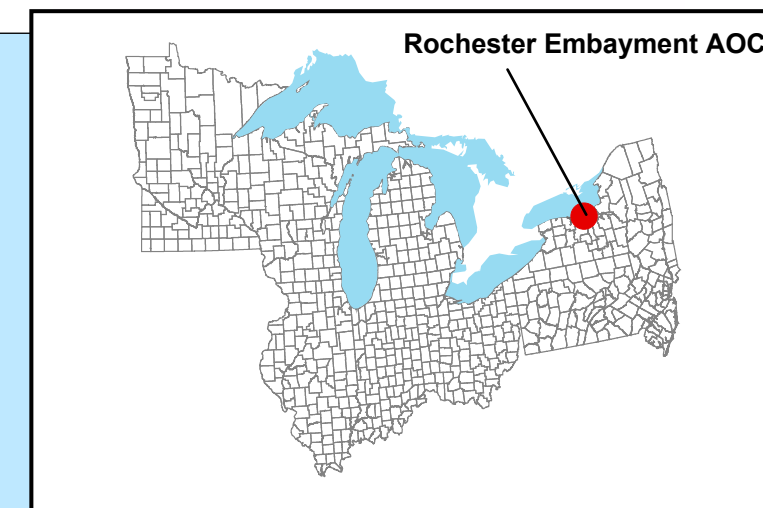


Rochester Embayment Area of Concern Monroe County, New York

Great Lakes
Areas of Concern



Monroe County, New York
Demographic Profile

Children 6 Years and Younger	67651
Females Aged 15 - 44	16005
Adults 65 Years and Older	95779

▲ NPDES Pipeline Location	● 2000 TRI Chemical Release Information (in pounds)	■ Population Density by Census Block (persons / sq. mile)
■ NPL Site	● 0 - 9,999	■ 0 - 1500
■ CERCLIS Site	● 10,000 - 99,999	■ 1501 - 5000
⬮ Boundary of AOC*	● 100,000 - 1,000,000	■ 5001 - 15000
⬮ Public Schools		■ 15001 - 40000
□ Hospitals		
— Rivers		
— Major Roads	⬮ Revised EPA Boundary of AOC (2007)	

National Priority List (NPL) Sites Non-NPL Sites having 1, 2, or 3 Hazard Category Code

* Geographic definition of AOC based on description from the United States Environmental Protection Agency, (USEPA). Final version pending.
Sources: AOC, TRI data: United States Environmental Protection Agency;
Demographics: 2000 U.S. Census Bureau;
Public Schools: U.S. Department of Education, 1999 - 2000;
Hospitals: American Hospital Association, 2001.



0 1 2 3 4 Miles