

## BWASP – Flight 21 – September 7 2008

Area flown: Block 5, attempted survey, but low ceilings (500-750') prevented transect effort.

Total hours flown: 3.0

Total transect hours: 0

Number of bowheads seen: 5 (0 calves)

Weather and visibility: Low ceilings prevailed throughout the area, ranging from 500-750'; Beaufort state ranged from 2-4 and there was no ice.

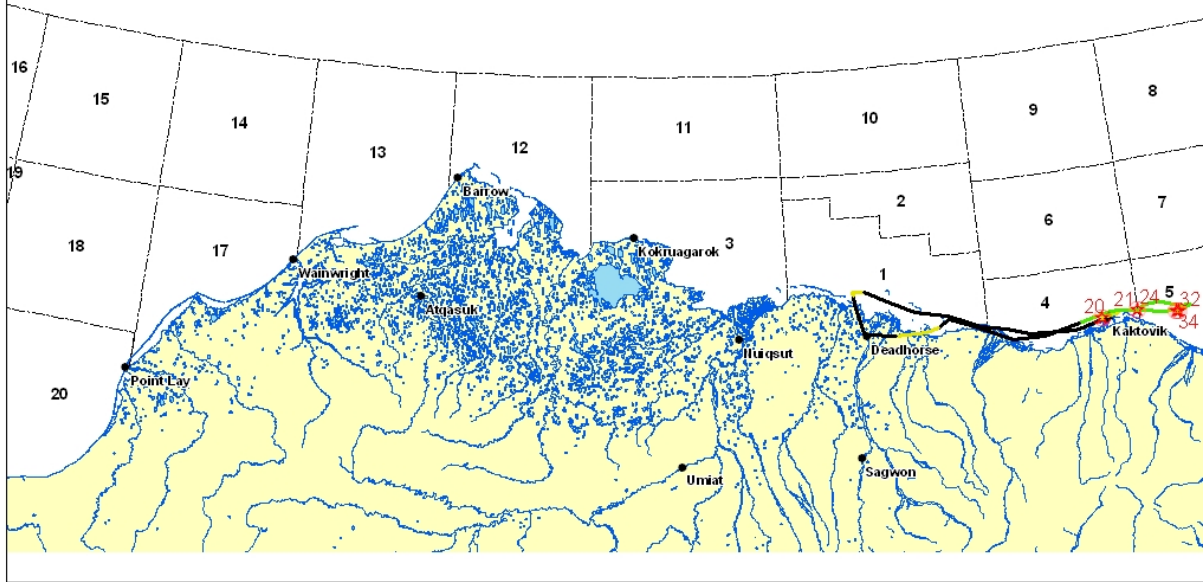
Sightings: Bowheads, one polar bear, bearded seals, and probable ringed seals.

### Bowhead Preliminary Summary, Flight 21 Date: 9/7/2008

Total bowheads: 5	Start time: 9/7/2008 1:27:23 PM	End time: 9/7/2008 4:24:54 PM
Bowhead sightings: 4	Transect minutes: 0	Transect km: 0
Bowheads on transect: 0	Connect minutes: 0	Connect km: 0
Bowhead calves: 0	Trans+Con minutes: 0	Trans+Con km: 0
Bowhead calves on transect: 0	Search minutes: 80	Search km: 189.5
Bowhead repeats: 0	Total minutes: 177	Total km: 560.5
Possible repeats: 0	Deadhead minutes: 97	Deadhead km: 371
Total gray whales: 0	Search blocks: 1, 4, 5	
Total belugas: 0	Transect blocks: 0	
Other whale sightings: 0		
Total walrus: 0		
Total bear: 1		

Event	Lat	Long	Block	Species	Total	Repeat	Calves	Swim direction	Swim Speed	Behavior	On effort
20	70.13	- 143.73	4	bowhead	1	.	0	105	slow	swim	False
24	70.16	- 142.99	5	bowhead	1	.	0	-1	slow	swim	False
32	70.1	- 142.21	5	bowhead	2	no	0	-1	.	rest	False
34	70.1	- 142.26	5	bowhead	1	no	0	52	slow	dive	False

Minerals Management Service  
 Bowhead Whale Aerial Survey Program  
 Flight 21, 9/7/2008



**Meteorological/Oceanographic Summary, Flight 21 Date: 9/7/2008**

Event	Lat	Long	Time	Type	% Ice	SeaState	Sky	Vis impeded left	Vis impeded right
1	70.19	- 148.47	1:27:23 PM	.	0	n/a	overcast	5-10 km	5-10 km
3	70.42	- 148.63	1:37:42 PM	.	0	n/a	overcast	5-10 km	5-10 km
4	70.42	- 148.63	1:37:55 PM	.	0	n/a	overcast	5-10 km	5-10 km
5	70.46	- 148.65	1:39:00 PM	.	0	B3 scattered caps, 7-10 kt	overcast	5-10 km	5-10 km
6	70.48	- 148.65	1:39:40 PM	.	0	B3 scattered caps, 7-10 kt	overcast	2-3 km	2-3 km
7	70.5	- 148.67	1:40:27 PM	.	0	n/a	overcast	2-3 km	2-3 km
8	70.49	- 148.44	1:45:37 PM	.	0	n/a	overcast	2-3 km	2-3 km
9	70.41	- 147.92	1:50:59 PM	.	0	n/a	overcast	2-3 km	2-3 km
10	70.33	- 147.45	1:56:04 PM	.	0	n/a	overcast	2-3 km	2-3 km
11	70.28	- 146.81	2:02:53 PM	.	0	n/a	overcast	2-3 km	2-3 km
12	70.22	- 146.36	2:07:59 PM	.	0	n/a	overcast	2-3 km	2-3 km
13	70.19	- 146.16	2:10:04 PM	.	0	n/a	overcast	Unlimited	Unlimited

14	70.15	- 145.66	2:14:57 PM	.	0	n/a	overcast	Unlimited	Unlimited
15	70.1	-145.2	2:20:02 PM	.	0	n/a	overcast	Unlimited	Unlimited
16	70.08	- 144.29	2:29:31 PM	.	0	n/a	overcast	Unlimited	Unlimited
17	70.09	- 144.23	2:30:11 PM	.	0	B4 numerous caps, 11- 16 kt	overcast	2-3 km	3-5 km
19	70.13	- 143.76	2:35:14 PM	.	0	B4 numerous caps, 11- 16 kt	overcast	2-3 km	2-3 km
20	70.13	- 143.73	2:35:32 PM	.	0	B4 numerous caps, 11- 16 kt	overcast	2-3 km	2-3 km
21	70.15	- 143.58	2:37:08 PM	.	0	B4 numerous caps, 11- 16 kt	overcast	2-3 km	2-3 km
22	70.16	- 143.45	2:38:33 PM	.	0	B3 scattered caps, 7-10 kt	overcast	2-3 km	2-3 km
23	70.17	- 143.35	2:39:42 PM	.	0	B2 sm waves, 4-6 kt	overcast	2-3 km	2-3 km
24	70.16	- 142.99	2:43:43 PM	.	0	B2 sm waves, 4-6 kt	overcast	2-3 km	2-3 km
25	70.18	- 142.86	2:47:38 PM	.	0	B2 sm waves, 4-6 kt	overcast	2-3 km	2-3 km
26	70.18	- 142.86	2:47:44 PM	.	0	B2 sm waves, 4-6 kt	overcast	2-3 km	2-3 km
27	70.19	-142.6	2:51:23 PM	.	0	B2 sm waves, 4-6 kt	overcast	2-3 km	2-3 km
28	70.18	- 142.54	2:51:56 PM	.	0	B2 sm waves, 4-6 kt	overcast	2-3 km	2-3 km
29	70.14	- 142.17	2:56:05 PM	.	0	B1 ripples, 1-3 kt	overcast	2-3 km	2-3 km
30	70.13	- 141.96	2:59:12 PM	.	0	B1 ripples, 1-3 kt	overcast	2-3 km	2-3 km
31	70.12	- 142.09	3:00:33 PM	.	0	B1 ripples, 1-3 kt	overcast	2-3 km	2-3 km
32	70.1	- 142.21	3:04:51 PM	.	0	B1 ripples, 1-3 kt	overcast	2-3 km	2-3 km
33	70.08	- 142.24	3:16:27 PM	.	0	B1 ripples, 1-3 kt	overcast	2-3 km	2-3 km
34	70.1	- 142.26	3:17:46 PM	.	0	B1 ripples, 1-3 kt	overcast	2-3 km	2-3 km
35	70.1	- 142.21	3:23:44 PM	.	0	B1 ripples, 1-3 kt	overcast	2-3 km	2-3 km
36	70.11	- 142.26	3:24:37 PM	.	0	B1 ripples, 1-3 kt	overcast	2-3 km	2-3 km
37	70.12	- 142.57	3:28:06 PM	.	0	B1 ripples, 1-3 kt	overcast	3-5 km	3-5 km
39	70.15	- 142.89	3:35:31 PM	.	0	B1 ripples, 1-3 kt	overcast	3-5 km	3-5 km
40	70.18	- 143.43	3:40:52 PM	.	0	B1 ripples, 1-3 kt	overcast	3-5 km	3-5 km
41	70.17	- 143.65	3:43:01 PM	.	0	n/a	overcast	3-5 km	3-5 km
42	70.12	- 144.21	3:48:12 PM	.	0	n/a	overcast	3-5 km	3-5 km
43	70.07	- 144.92	3:54:11 PM	.	0	n/a	overcast	3-5 km	3-5 km
44	70.08	- 145.55	3:59:16 PM	.	0	n/a	overcast	3-5 km	3-5 km
45	70.2	- 146.33	4:06:17 PM	.	0	n/a	overcast	3-5 km	3-5 km
46	70.26	- 146.76	4:10:08 PM	.	0	B4 numerous caps, 11- 16 kt	overcast	2-3 km	2-3 km
47	70.21	- 146.99	4:12:19 PM	.	0	B4 numerous caps, 11- 16 kt	overcast	1-2 km	2-3 km
48	70.19	- 147.25	4:14:32 PM	.	0	n/a	overcast	1-2 km	2-3 km
49	70.18	- 147.86	4:19:41 PM	.	0	n/a	overcast	1-2 km	2-3 km

50	70.2	- 148.43	4:24:46 PM	.	0	n/a	overcast	1-2 km	2-3 km
----	------	-------------	---------------	---	---	-----	----------	--------	--------