

BWASP – Flight 20 – September 5, 2008

Area flown: Block 5, attempted survey but low ceilings prevented effort; Block 1, partial transects; Block 3, partial transects. Low ceilings in blocks 1 and 3 prevented further transect effort.

Total hours flown: 4.5

Total transect hours: 0.9

Number of bowheads seen: 8 (0 calves)

Weather and visibility: Low ceilings prevailed throughout the area ranging from 500 ft up to 1000 ft. The Beaufort state ranged from 2-4. No ice in any of the survey area.

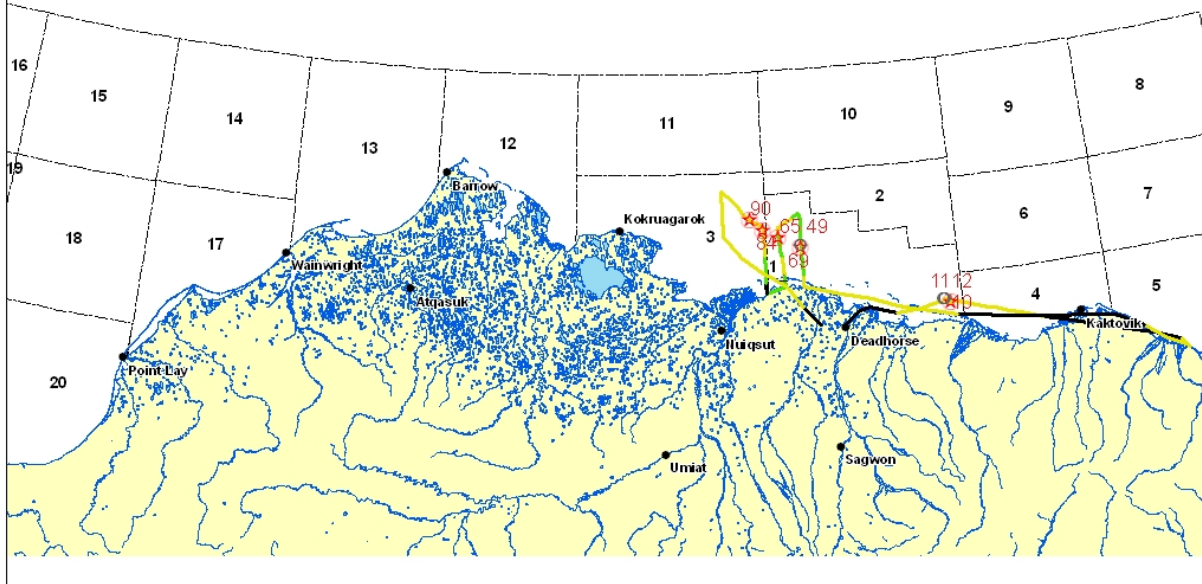
Sightings: Bowheads, one polar bear and three unidentified large whales that were probable bowhead whales.

Bowhead Preliminary Summary, Flight 20 Date: 9/5/2008

Total bowheads: 8	Start time: 9/5/2008 2:26:18 PM	End time: 9/5/2008 6:48:44 PM
Bowhead sightings: 5	Transect minutes: 54	Transect km: 187.8
Bowheads on transect: 5	Connect minutes: 17	Connect km: 60
Bowhead calves: 0	Trans+Con minutes: 71	Trans+Con km: 247.8
Bowhead calves on transect: 0	Search minutes: 107	Search km: 372.8
Bowhead repeats: 0	Total minutes: 262	Total km: 969.7
Possible repeats: 0	Deadhead minutes: 84	Deadhead km: 349.1
Total gray whales: 0	Search blocks: 0, 1, 4, 5, 3	
Total belugas: 0	Transect blocks: 1, 3	
Other whale sightings: 3		
Total walrus: 0		
Total bear: 1		

Event	Lat	Long	Block	Species	Total	Repeat	Calves	Swim direction	Swim Speed	Behavior	On effort
10	70.3	- 146.25	1	bowhead	2	.	0	340	slow	swim	False
11	70.33	- 146.37	1	unknown cetacean	1	.	0	-1	slow	swim	False
12	70.33	- 146.34	1	unknown cetacean	1	.	0	-1	slow	swim	False
48	70.76	- 149.25	1	bowhead	3	no	0	331	slow	swim	True
49	70.78	- 149.25	1	unknown cetacean	1	.	0	-1	slow	swim	True
65	70.84	- 149.72	1	bowhead	1	.	0	293	slow	swim	True
84	70.89	- 150.04	3	bowhead	1	.	0	299	slow	swim	True
90	70.97	- 150.31	3	bowhead	1	.	0	274	slow	swim	False

Minerals Management Service
Bowhead Whale Aerial Survey Program
Flight 20, 9/5/2008



Meteorological/Oceanographic Summary, Flight 20 Date: 9/5/2008

Event	Lat	Long	Time	Type	% Ice	SeaState	Sky	Vis impeded left	Vis impeded right
1	70.19	- 148.49	2:26:18 PM	no ice	0	n/a	overcast	.	.
2	70.3	- 148.13	2:31:43 PM	no ice	0	n/a	overcast	.	.
3	70.32	- 147.91	2:33:53 PM	no ice	0	B3 scattered caps, 7-10 kt	overcast	5-10 km	5-10 km
4	70.27	- 147.37	2:39:19 PM	no ice	0	B3 scattered caps, 7-10 kt	overcast	5-10 km	5-10 km
5	70.28	- 146.87	2:44:19 PM	no ice	0	B3 scattered caps, 7-10 kt	overcast	3-5 km	3-5 km
6	70.29	- 146.78	2:45:16 PM	no ice	0	B3 scattered caps, 7-10 kt	overcast	2-3 km	3-5 km
7	70.29	- 146.73	2:45:45 PM	no ice	0	B3 scattered caps, 7-10 kt	overcast	1-2 km	3-5 km
8	70.3	- 146.66	2:46:21 PM	no ice	0	B3 scattered caps, 7-10 kt	overcast	2-3 km	3-5 km
9	70.31	- 146.51	2:47:52 PM	no ice	0	B3 scattered caps, 7-10 kt	overcast	3-5 km	3-5 km
10	70.3	- 146.25	2:50:26 PM	no ice	0	B3 scattered caps, 7-10 kt	overcast	3-5 km	3-5 km
11	70.33	- 146.37	3:00:19 PM	no ice	0	B3 scattered caps, 7-10 kt	overcast	3-5 km	3-5 km
12	70.33	- 146.34	3:01:00 PM	no ice	0	B3 scattered caps, 7-10 kt	overcast	3-5 km	3-5 km

13	70.26	- 145.71	3:10:53 PM	no ice	0	B3 scattered caps, 7-10 kt	overcast	2-3 km	3-5 km
14	70.24	- 145.48	3:13:13 PM	no ice	0	B3 scattered caps, 7-10 kt	overcast	1-2 km	2-3 km
15	70.23	- 145.35	3:14:27 PM	no ice	0	B3 scattered caps, 7-10 kt	overcast	2-3 km	3-5 km
16	70.22	- 145.25	3:15:29 PM	no ice	0	B3 scattered caps, 7-10 kt	overcast	1-2 km	1-2 km
17	70.21	-145.2	3:16:05 PM	no ice	0	B3 scattered caps, 7-10 kt	overcast	<1 km	1-2 km
18	70.17	- 144.88	3:19:21 PM	no ice	0	n/a	overcast	0 km	0 km
19	70.12	- 144.39	3:24:48 PM	no ice	0	n/a	overcast	0 km	0 km
20	70.06	- 143.82	3:30:15 PM	no ice	0	n/a	overcast	0 km	0 km
21	70.01	-143.3	3:35:18 PM	no ice	0	n/a	overcast	0 km	0 km
22	69.95	- 142.76	3:40:21 PM	no ice	0	n/a	overcast	0 km	0 km
23	69.89	- 142.22	3:45:24 PM	no ice	0	n/a	overcast	0 km	0 km
24	69.82	- 141.77	3:49:55 PM	no ice	0	B3 scattered caps, 7-10 kt	overcast	<1 km	<1 km
25	69.82	- 141.71	3:50:27 PM	no ice	0	B3 scattered caps, 7-10 kt	overcast	<1 km	3-5 km
26	69.76	- 141.59	3:55:36 PM	no ice	0	B3 scattered caps, 7-10 kt	overcast	<1 km	<1 km
27	69.77	- 141.65	3:56:13 PM	no ice	0	B3 scattered caps, 7-10 kt	overcast	<1 km	2-3 km
28	69.83	- 141.98	3:59:20 PM	no ice	0	B3 scattered caps, 7-10 kt	overcast	<1 km	2-3 km
29	69.84	-142	3:59:35 PM	no ice	0	n/a	overcast	0 km	0 km
30	69.95	- 142.43	4:04:49 PM	no ice	0	n/a	overcast	0 km	0 km
31	70.06	- 142.94	4:09:58 PM	no ice	0	n/a	overcast	0 km	0 km
32	70.09	- 143.53	4:15:00 PM	no ice	0	n/a	overcast	0 km	0 km
33	70.12	- 144.17	4:20:25 PM	no ice	0	n/a	overcast	0 km	0 km
34	70.14	- 144.76	4:25:32 PM	no ice	0	n/a	overcast	0 km	0 km
35	70.17	- 145.39	4:30:35 PM	no ice	0	n/a	overcast	0 km	0 km
36	70.18	- 145.49	4:31:22 PM	no ice	0	B3 scattered caps, 7-10 kt	overcast	1-2 km	<1 km
37	70.21	- 146.14	4:36:37 PM	no ice	0	B3 scattered caps, 7-10 kt	overcast	1-2 km	<1 km
38	70.25	- 146.62	4:40:46 PM	no ice	0	B3 scattered caps, 7-10 kt	overcast	1-2 km	3-5 km
39	70.27	-146.9	4:43:04 PM	no ice	0	B3 scattered caps, 7-10 kt	overcast	1-2 km	1-2 km
40	70.31	- 147.34	4:46:51 PM	no ice	0	B3 scattered caps, 7-10 kt	overcast	2-3 km	5-10 km
41	70.38	- 147.86	4:51:41 PM	no ice	0	B3 scattered caps, 7-10 kt	overcast	2-3 km	5-10 km
43	70.43	- 148.48	4:57:08 PM	no ice	0	B3 scattered caps, 7-10 kt	overcast	2-3 km	5-10 km
44	70.48	- 149.09	5:02:31 PM	no ice	0	B3 scattered caps, 7-10 kt	overcast	2-3 km	5-10 km
45	70.49	- 149.25	5:04:20 PM	no ice	0	B2 sm waves, 4-6 kt	overcast	3-5 km	5-10 km
46	70.58	- 149.24	5:07:14 PM	no ice	0	B3 scattered caps, 7-10 kt	overcast	3-5 km	5-10 km
47	70.73	- 149.25	5:12:06 PM	no ice	0	B2 sm waves, 4-6 kt	overcast	3-5 km	5-10 km

48	70.76	- 149.25	5:13:00 PM	no ice	0	B2 sm waves, 4-6 kt	overcast	3-5 km	5-10 km
49	70.78	- 149.25	5:13:42 PM	no ice	0	B2 sm waves, 4-6 kt	overcast	3-5 km	5-10 km
50	70.86	- 149.25	5:16:19 PM	no ice	0	B2 sm waves, 4-6 kt	overcast	3-5 km	3-5 km
51	70.88	- 149.25	5:16:46 PM	no ice	0	B2 sm waves, 4-6 kt	overcast	<1 km	3-5 km
52	70.89	- 149.25	5:17:14 PM	no ice	0	B2 sm waves, 4-6 kt	overcast	<1 km	2-3 km
53	70.93	- 149.25	5:18:23 PM	no ice	0	B2 sm waves, 4-6 kt	overcast	1-2 km	2-3 km
54	70.94	- 149.26	5:18:40 PM	no ice	0	B2 sm waves, 4-6 kt	overcast	2-3 km	2-3 km
55	70.99	- 149.26	5:20:24 PM	no ice	0	B2 sm waves, 4-6 kt	overcast	2-3 km	2-3 km
57	71.01	- 149.29	5:20:57 PM	no ice	0	B2 sm waves, 4-6 kt	overcast	2-3 km	<1 km
58	70.99	- 149.37	5:21:56 PM	no ice	0	B3 scattered caps, 7-10 kt	overcast	2-3 km	<1 km
59	70.97	- 149.43	5:22:50 PM	no ice	0	B3 scattered caps, 7-10 kt	overcast	2-3 km	<1 km
60	70.95	- 149.48	5:23:31 PM	no ice	0	B3 scattered caps, 7-10 kt	overcast	3-5 km	3-5 km
61	70.92	- 149.71	5:25:55 PM	no ice	0	B3 scattered caps, 7-10 kt	overcast	3-5 km	3-5 km
62	70.91	- 149.73	5:26:17 PM	no ice	0	B3 scattered caps, 7-10 kt	overcast	3-5 km	3-5 km
63	70.88	- 149.73	5:27:11 PM	no ice	0	B2 sm waves, 4-6 kt	overcast	1-2 km	1-2 km
64	70.86	- 149.73	5:27:53 PM	no ice	0	B2 sm waves, 4-6 kt	overcast	1-2 km	1-2 km
65	70.84	- 149.72	5:28:36 PM	no ice	0	B2 sm waves, 4-6 kt	overcast	1-2 km	1-2 km
66	70.76	- 149.69	5:31:09 PM	no ice	0	B2 sm waves, 4-6 kt	overcast	1-2 km	3-5 km
67	70.75	- 149.69	5:31:20 PM	no ice	0	B3 scattered caps, 7-10 kt	overcast	1-2 km	3-5 km
68	70.7	- 149.67	5:33:17 PM	no ice	0	B2 sm waves, 4-6 kt	overcast	1-2 km	3-5 km
69	70.57	- 149.65	5:37:33 PM	no ice	0	B2 sm waves, 4-6 kt	overcast	1-2 km	3-5 km
70	70.54	- 149.64	5:38:33 PM	no ice	0	B2 sm waves, 4-6 kt	overcast	1-2 km	3-5 km
71	70.5	- 149.63	5:39:42 PM	no ice	0	B2 sm waves, 4-6 kt	overcast	1-2 km	3-5 km
72	70.5	- 149.63	5:39:54 PM	no ice	0	n/a	overcast	1-2 km	3-5 km
73	70.45	- 150.02	5:45:01 PM	no ice	0	n/a	overcast	1-2 km	3-5 km
74	70.46	- 150.02	5:45:05 PM	no ice	0	B2 sm waves, 4-6 kt	overcast	1-2 km	3-5 km
75	70.53	- 150.03	5:47:27 PM	no ice	0	B2 sm waves, 4-6 kt	overcast	1-2 km	3-5 km
76	70.54	- 150.03	5:47:58 PM	no ice	0	B2 sm waves, 4-6 kt	overcast	1-2 km	3-5 km
77	70.6	- 150.03	5:49:37 PM	no ice	0	B2 sm waves, 4-6 kt	overcast	2-3 km	3-5 km
78	70.63	- 150.03	5:50:47 PM	no ice	0	B3 scattered caps, 7-10 kt	overcast	1-2 km	3-5 km
79	70.72	- 150.03	5:53:30 PM	no ice	0	B3 scattered caps, 7-10 kt	overcast	1-2 km	3-5 km
80	70.75	- 150.03	5:54:28 PM	no ice	0	B3 scattered caps, 7-10 kt	overcast	1-2 km	3-5 km
81	70.77	- 150.03	5:55:09 PM	no ice	0	B3 scattered caps, 7-10 kt	overcast	<1 km	<1 km
82	70.86	- 150.04	5:58:13 PM	no ice	0	B3 scattered caps, 7-10 kt	overcast	<1 km	<1 km

83	70.88	- 150.04	5:58:39 PM	no ice	0	B3 scattered caps, 7-10 kt	overcast	2-3 km	2-3 km
84	70.89	- 150.04	5:59:02 PM	no ice	0	B3 scattered caps, 7-10 kt	overcast	2-3 km	2-3 km
85	70.91	- 150.04	5:59:31 PM	no ice	0	B3 scattered caps, 7-10 kt	overcast	2-3 km	2-3 km
86	70.91	- 150.04	5:59:48 PM	no ice	0	B3 scattered caps, 7-10 kt	overcast	2-3 km	2-3 km
87	70.93	- 150.07	6:00:23 PM	no ice	0	B3 scattered caps, 7-10 kt	overcast	2-3 km	2-3 km
88	70.94	- 150.18	6:01:28 PM	no ice	0	B3 scattered caps, 7-10 kt	overcast	<1 km	<1 km
89	70.96	- 150.28	6:02:36 PM	no ice	0	B4 numerous caps, 11- 16 kt	overcast	<1 km	<1 km
90	70.97	- 150.31	6:02:59 PM	no ice	0	B4 numerous caps, 11- 16 kt	overcast	<1 km	<1 km
91	70.99	- 150.43	6:04:24 PM	no ice	0	B4 numerous caps, 11- 16 kt	overcast	3-5 km	5-10 km
92	71.09	- 150.61	6:08:13 PM	no ice	0	B4 numerous caps, 11- 16 kt	overcast	3-5 km	2-3 km
93	71.11	- 150.65	6:08:55 PM	no ice	0	B3 scattered caps, 7-10 kt	overcast	3-5 km	2-3 km
95	71.18	- 150.89	6:12:55 PM	no ice	0	B3 scattered caps, 7-10 kt	overcast	3-5 km	5-10 km
96	71.03	- 150.89	6:17:55 PM	no ice	0	B3 scattered caps, 7-10 kt	overcast	<1 km	2-3 km
97	70.98	- 150.89	6:19:32 PM	no ice	0	B3 scattered caps, 7-10 kt	overcast	1-2 km	1-2 km
98	70.96	- 150.89	6:20:04 PM	no ice	0	B3 scattered caps, 7-10 kt	overcast	<1 km	<1 km
100	70.93	- 150.89	6:21:05 PM	no ice	0	B3 scattered caps, 7-10 kt	overcast	2-3 km	2-3 km
101	70.88	- 150.89	6:22:36 PM	no ice	0	B3 scattered caps, 7-10 kt	overcast	2-3 km	2-3 km
102	70.86	- 150.89	6:23:07 PM	no ice	0	B3 scattered caps, 7-10 kt	overcast	2-3 km	2-3 km
103	70.73	- 150.55	6:28:01 PM	no ice	0	B3 scattered caps, 7-10 kt	overcast	1-2 km	2-3 km
104	70.71	- 150.51	6:28:44 PM	no ice	0	B3 scattered caps, 7-10 kt	overcast	1-2 km	2-3 km
105	70.7	- 150.49	6:29:00 PM	no ice	0	B3 scattered caps, 7-10 kt	overcast	1-2 km	2-3 km
106	70.6	- 150.08	6:33:53 PM	no ice	0	B3 scattered caps, 7-10 kt	overcast	1-2 km	2-3 km
107	70.57	- 149.94	6:35:22 PM	no ice	0	B3 scattered caps, 7-10 kt	overcast	3-5 km	2-3 km
108	70.5	-149.6	6:39:07 PM	no ice	0	n/a	overcast	3-5 km	2-3 km
109	70.33	- 149.25	6:44:25 PM	no ice	0	n/a	overcast	3-5 km	2-3 km
110	70.22	- 148.93	6:48:44 PM	no ice	0	n/a	overcast	3-5 km	2-3 km