

**BWASP – Flight 24 – September 14 2008**

Area flown: Blocks 3 and 11, completed three westernmost transects, with partial transects in eastern part of Block 11.

Total hours flown: 5.1

Total transect hours: 3.1

Number of bowheads seen: 0 (0 calves)

Weather and visibility: Ceilings were excellent with partly cloudy to overcast skies. Beaufort state ranged from 2 in the northernmost areas to 5 in the southern part of the survey area.

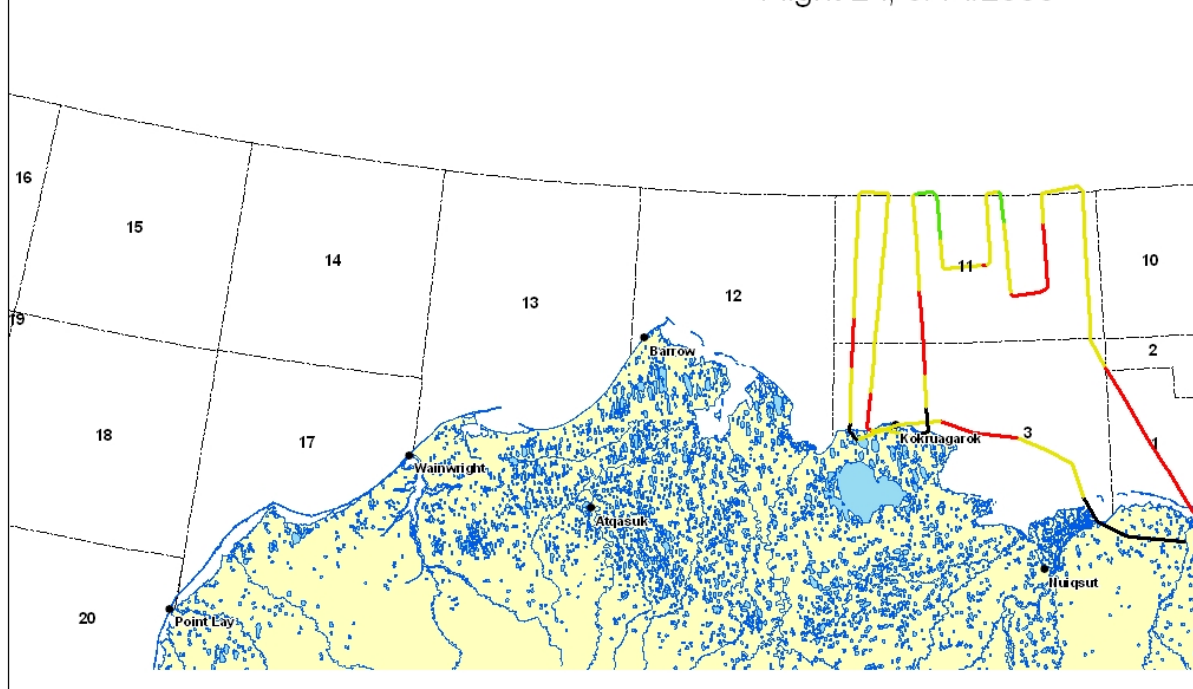
Sightings: Bearded seals and unidentified pinnipeds.

**Bowhead Preliminary Summary, Flight 24 Date: 9/14/2008**

Total bowheads: 0	Start time: 9/14/2008 9:51:49 AM	End time: 9/14/2008 2:58:57 PM
Bowhead sightings: 0	Transect minutes: 183	Transect km: 628.9
Bowheads on transect: 0	Connect minutes: 27	Connect km: 88.3
Bowhead calves: 0	Trans+Con minutes: 210	Trans+Con km: 717.2
Bowhead calves on transect: 0	Search minutes: 71	Search km: 264.5
Bowhead repeats: 0	Total minutes: 307	Total km: 1086.5
Possible repeats: 0	Deadhead minutes: 26	Deadhead km: 104.8
Total gray whales: 0	Search blocks: 3, 0, 11, 2, 1	
Total belugas: 0	Transect blocks: 3, 11, 0	
Other whale sightings: 0		
Total walrus: 0		
Total bear: 0		

Event	Lat	Long	Block	Species	Total	Repeat	Calves	Swim direction	Swim Speed	Behavior	On effort
-------	-----	------	-------	---------	-------	--------	--------	----------------	------------	----------	-----------

Minerals Management Service  
Bowhead Whale Aerial Survey Program  
Flight 24, 9/14/2008



**Meteorological/Oceanographic Summary, Flight 24 Date: 9/14/2008**

Event	Lat	Long	Time	Type	% Ice	SeaState	Sky	Vis impeded left	Vis impeded right
1	70.32	-149.01	9:51:49 AM	no ice	0	n/a	partly cloudy	0 km	0 km
2	70.36	-149.76	9:57:41 AM	no ice	0	n/a	partly cloudy	0 km	0 km
3	70.36	-149.82	9:58:11 AM	no ice	0	n/a	partly cloudy	0 km	0 km
4	70.43	-150.21	10:01:45 AM	no ice	0	B3 scattered caps, 7-10 kt	partly cloudy	5-10 km	2-3 km
5	70.55	-150.4	10:05:19 AM	no ice	0	B4 numerous caps, 11-16 kt	partly cloudy	5-10 km	5-10 km
6	70.72	-150.54	10:09:45 AM	no ice	0	B4 numerous caps, 11-16 kt	partly cloudy	5-10 km	5-10 km
7	70.79	-150.93	10:13:19 AM	no ice	0	B5 many caps, 17-21 kt	partly cloudy	5-10 km	5-10 km
8	70.84	-151.33	10:16:45 AM	no ice	0	B5 many caps, 17-21 kt	partly cloudy	5-10 km	5-10 km
9	70.87	-151.95	10:21:35 AM	no ice	0	B4 numerous caps, 11-16 kt	partly cloudy	5-10 km	5-10 km
10	70.93	-152.43	10:25:28 AM	no ice	0	B4 numerous caps, 11-16 kt	partly cloudy	5-10 km	5-10 km
11	70.91	-153.05	10:30:22 AM	no ice	0	n/a	partly cloudy	0 km	0 km
12	70.84	-153.65	10:35:21 AM	no ice	0	n/a	partly cloudy	0 km	0 km

13	70.89	- 153.75	10:37:04 AM	no ice	0	B3 scattered caps, 7-10 kt	partly cloudy	5-10 km	5-10 km
14	70.93	- 153.74	10:38:24 AM	no ice	0	B4 numerous caps, 11- 16 kt	partly cloudy	5-10 km	5-10 km
15	71.03	- 153.73	10:41:53 AM	no ice	0	B5 many caps, 17-21 kt	partly cloudy	5-10 km	5-10 km
16	71.19	- 153.72	10:46:58 AM	no ice	0	B5 many caps, 17-21 kt	partly cloudy	5-10 km	5-10 km
17	71.33	- 153.71	10:51:51 AM	no ice	0	B4 numerous caps, 11- 16 kt	partly cloudy	5-10 km	5-10 km
18	71.42	-153.7	10:54:46 AM	no ice	0	B4 numerous caps, 11- 16 kt	partly cloudy	5-10 km	5-10 km
19	71.61	- 153.69	11:01:00 AM	no ice	0	B4 numerous caps, 11- 16 kt	partly cloudy	5-10 km	5-10 km
20	71.65	- 153.68	11:02:21 AM	no ice	0	B4 numerous caps, 11- 16 kt	partly cloudy	5-10 km	5-10 km
21	71.75	- 153.68	11:05:39 AM	no ice	0	B3 scattered caps, 7-10 kt	overcast	5-10 km	5-10 km
22	71.84	- 153.67	11:08:22 AM	no ice	0	B3 scattered caps, 7-10 kt	overcast	5-10 km	5-10 km
23	71.85	- 153.67	11:08:54 AM	no ice	0	B3 scattered caps, 7-10 kt	overcast	5-10 km	5-10 km
24	72	- 153.66	11:13:41 AM	no ice	0	B3 scattered caps, 7-10 kt	overcast	5-10 km	5-10 km
25	72.02	- 153.61	11:14:32 AM	no ice	0	B3 scattered caps, 7-10 kt	overcast	5-10 km	5-10 km
26	72.01	-153.2	11:18:58 AM	no ice	0	B3 scattered caps, 7-10 kt	overcast	5-10 km	5-10 km
27	72	-153.2	11:19:22 AM	no ice	0	B3 scattered caps, 7-10 kt	overcast	5-10 km	5-10 km
28	71.85	- 153.23	11:24:01 AM	no ice	0	B3 scattered caps, 7-10 kt	overcast	5-10 km	5-10 km
29	71.72	- 153.27	11:28:16 AM	no ice	0	B3 scattered caps, 7-10 kt	overcast	5-10 km	5-10 km
30	71.7	- 153.28	11:29:05 AM	no ice	0	B4 numerous caps, 11- 16 kt	overcast	5-10 km	5-10 km
31	71.61	-153.3	11:32:09 AM	no ice	0	B4 numerous caps, 11- 16 kt	overcast	5-10 km	5-10 km
32	71.55	- 153.32	11:34:01 AM	no ice	0	B4 numerous caps, 11- 16 kt	partly cloudy	5-10 km	5-10 km
35	71.49	- 153.33	11:36:06 AM	no ice	0	B4 numerous caps, 11- 16 kt	partly cloudy	5-10 km	5-10 km
36	71.33	- 153.38	11:41:19 AM	no ice	0	B4 numerous caps, 11- 16 kt	partly cloudy	5-10 km	5-10 km
37	71.28	- 153.39	11:43:00 AM	no ice	0	B4 numerous caps, 11- 16 kt	partly cloudy	5-10 km	5-10 km
38	71.23	-153.4	11:44:36 AM	no ice	0	B5 many caps, 17-21 kt	partly cloudy	5-10 km	5-10 km
39	71.06	- 153.45	11:49:57 AM	no ice	0	B5 many caps, 17-21 kt	partly cloudy	5-10 km	5-10 km
41	70.9	- 153.49	11:55:19 AM	no ice	0	B4 numerous caps, 11- 16 kt	partly cloudy	5-10 km	5-10 km
42	70.89	- 153.42	11:56:31 AM	no ice	0	B3 scattered caps, 7-10 kt	partly cloudy	5-10 km	5-10 km
43	70.89	- 153.26	11:58:28 AM	no ice	0	n/a	partly cloudy	0 km	0 km
44	70.86	- 152.83	12:03:50 PM	no ice	0	n/a	partly cloudy	0 km	0 km
46	70.88	-152.6	12:07:25 PM	no ice	0	B4 numerous caps, 11- 16 kt	partly cloudy	5-10 km	5-10 km
47	71	- 152.63	12:11:19 PM	no ice	0	B5 many caps, 17-21 kt	partly cloudy	5-10 km	5-10 km
48	71.16	- 152.65	12:16:27 PM	no ice	0	B5 many caps, 17-21 kt	partly cloudy	5-10 km	5-10 km
49	71.28	- 152.67	12:20:26 PM	no ice	0	B5 many caps, 17-21 kt	partly cloudy	5-10 km	5-10 km
50	71.44	-152.7	12:25:31 PM	no ice	0	B4 numerous caps, 11- 16 kt	partly cloudy	5-10 km	5-10 km

51	71.56	-152.73	12:29:13 PM	no ice	0	B4 numerous caps, 11-16 kt	overcast	5-10 km	5-10 km
52	71.7	-152.75	12:33:40 PM	no ice	0	B3 scattered caps, 7-10 kt	overcast	5-10 km	5-10 km
53	71.86	-152.79	12:38:45 PM	no ice	0	B3 scattered caps, 7-10 kt	overcast	5-10 km	5-10 km
54	71.9	-152.8	12:40:14 PM	no ice	0	B3 scattered caps, 7-10 kt	overcast	5-10 km	5-10 km
55	72	-152.82	12:43:18 PM	no ice	0	B2 sm waves, 4-6 kt	overcast	5-10 km	5-10 km
56	72.01	-152.78	12:44:00 PM	no ice	0	B2 sm waves, 4-6 kt	overcast	5-10 km	5-10 km
58	72.01	-152.7	12:44:55 PM	no ice	0	B2 sm waves, 4-6 kt	overcast	5-10 km	5-10 km
59	72.01	-152.64	12:45:31 PM	no ice	0	B2 sm waves, 4-6 kt	overcast	5-10 km	5-10 km
60	72.02	-152.57	12:46:12 PM	no ice	0	B2 sm waves, 4-6 kt	overcast	5-10 km	5-10 km
61	72.02	-152.5	12:46:57 PM	no ice	0	B2 sm waves, 4-6 kt	overcast	5-10 km	5-10 km
62	72	-152.45	12:47:45 PM	no ice	0	B2 sm waves, 4-6 kt	overcast	5-10 km	5-10 km
63	71.96	-152.44	12:48:59 PM	no ice	0	B3 scattered caps, 7-10 kt	overcast	5-10 km	5-10 km
64	71.79	-152.4	12:54:46 PM	no ice	0	B3 scattered caps, 7-10 kt	overcast	5-10 km	5-10 km
65	71.75	-152.39	12:56:14 PM	no ice	0	B4 numerous caps, 11-16 kt	overcast	5-10 km	5-10 km
66	71.66	-152.37	12:59:13 PM	no ice	0	B4 numerous caps, 11-16 kt	overcast	5-10 km	5-10 km
67	71.66	-152.33	12:59:44 PM	no ice	0	B5 many caps, 17-21 kt	overcast	5-10 km	5-10 km
68	71.67	-151.77	1:05:47 PM	no ice	0	B4 numerous caps, 11-16 kt	overcast	5-10 km	5-10 km
69	71.67	-151.7	1:06:29 PM	no ice	0	B4 numerous caps, 11-16 kt	overcast	5-10 km	5-10 km
70	71.69	-151.67	1:07:10 PM	no ice	0	B4 numerous caps, 11-16 kt	overcast	5-10 km	5-10 km
71	71.76	-151.66	1:09:30 PM	no ice	0	B4 numerous caps, 11-16 kt	overcast	5-10 km	5-10 km
72	71.81	-151.66	1:11:07 PM	no ice	0	B3 scattered caps, 7-10 kt	overcast	5-10 km	5-10 km
74	72	-151.69	1:17:19 PM	no ice	0	B3 scattered caps, 7-10 kt	overcast	5-10 km	5-10 km
75	72.01	-151.66	1:17:43 PM	no ice	0	B2 sm waves, 4-6 kt	overcast	5-10 km	5-10 km
76	72.01	-151.49	1:19:26 PM	no ice	0	B2 sm waves, 4-6 kt	overcast	5-10 km	5-10 km
77	72	-151.47	1:19:57 PM	no ice	0	B3 scattered caps, 7-10 kt	overcast	5-10 km	5-10 km
78	71.86	-151.44	1:24:36 PM	no ice	0	B4 numerous caps, 11-16 kt	overcast	5-10 km	5-10 km
79	71.76	-151.41	1:27:52 PM	no ice	0	B3 scattered caps, 7-10 kt	overcast	5-10 km	5-10 km
80	71.71	-151.4	1:29:33 PM	no ice	0	B4 numerous caps, 11-16 kt	overcast	5-10 km	5-10 km
81	71.67	-151.39	1:30:51 PM	no ice	0	B5 many caps, 17-21 kt	overcast	5-10 km	5-10 km
82	71.53	-151.35	1:35:34 PM	no ice	0	B5 many caps, 17-21 kt	overcast	5-10 km	5-10 km
83	71.52	-151.31	1:36:12 PM	no ice	0	B5 many caps, 17-21 kt	overcast	5-10 km	5-10 km
85	71.53	-150.94	1:40:36 PM	no ice	0	B5 many caps, 17-21 kt	overcast	5-10 km	5-10 km
87	71.55	-150.81	1:42:15 PM	no ice	0	B5 many caps, 17-21 kt	overcast	5-10 km	5-10 km
88	71.56	-150.81	1:42:28 PM	no ice	0	B5 many caps, 17-21 kt	overcast	5-10 km	5-10 km

91	71.73	- 150.82	1:48:07 PM	no ice	0	B4 numerous caps, 11- 16 kt	overcast	5-10 km	5-10 km
92	71.86	- 150.83	1:52:21 PM	no ice	0	B3 scattered caps, 7-10 kt	overcast	5-10 km	5-10 km
93	72	- 150.85	1:56:59 PM	no ice	0	B3 scattered caps, 7-10 kt	overcast	5-10 km	5-10 km
94	72.01	- 150.64	1:59:26 PM	no ice	0	B3 scattered caps, 7-10 kt	overcast	5-10 km	5-10 km
95	72.03	- 150.28	2:03:21 PM	no ice	0	B3 scattered caps, 7-10 kt	overcast	5-10 km	5-10 km
96	72	- 150.21	2:04:33 PM	no ice	0	B3 scattered caps, 7-10 kt	overcast	5-10 km	5-10 km
97	71.83	- 150.21	2:10:23 PM	no ice	0	B4 numerous caps, 11- 16 kt	overcast	5-10 km	5-10 km
98	71.83	- 150.21	2:10:24 PM	no ice	0	B4 numerous caps, 11- 16 kt	overcast	5-10 km	5-10 km
99	71.55	- 150.19	2:19:35 PM	no ice	0	B4 numerous caps, 11- 16 kt	overcast	5-10 km	5-10 km
100	71.38	- 150.19	2:25:00 PM	no ice	0	B4 numerous caps, 11- 16 kt	overcast	5-10 km	5-10 km
101	71.3	-150.2	2:27:38 PM	no ice	0	B5 many caps, 17-21 kt	overcast	5-10 km	5-10 km
102	71.16	-150	2:32:37 PM	no ice	0	B5 many caps, 17-21 kt	overcast	5-10 km	5-10 km
103	71.02	- 149.76	2:37:57 PM	no ice	0	B5 many caps, 17-21 kt	overcast	5-10 km	5-10 km
104	70.82	- 149.45	2:45:12 PM	no ice	0	B5 many caps, 17-21 kt	overcast	5-10 km	5-10 km
105	70.69	- 149.24	2:50:00 PM	no ice	0	B5 many caps, 17-21 kt	overcast	5-10 km	5-10 km
107	70.65	- 149.17	2:51:32 PM	no ice	0	B5 many caps, 17-21 kt	overcast	5-10 km	5-10 km
108	70.51	- 148.95	2:56:35 PM	no ice	0	B5 many caps, 17-21 kt	overcast	5-10 km	5-10 km
109	70.5	- 148.93	2:56:59 PM	no ice	0	B5 many caps, 17-21 kt	overcast	5-10 km	5-10 km
110	70.47	- 148.89	2:58:04 PM	no ice	0	n/a	overcast	0 km	0 km
111	70.45	- 148.85	2:58:57 PM	no ice	0	n/a	overcast	0 km	0 km