

BWASP – Flight 23 – September 12 2008

Area flown: Blocks 1 and 2, completed all transects; Block 3, completed two easternmost transects.

Total hours flown: 7.8

Total transect hours: 5.2

Number of bowheads seen: 14 (0 calves)

Weather and visibility: Ceilings were variable above 1000' with occasional snow squalls.

Visibility was very good and the Beaufort state ranged from 2-4.

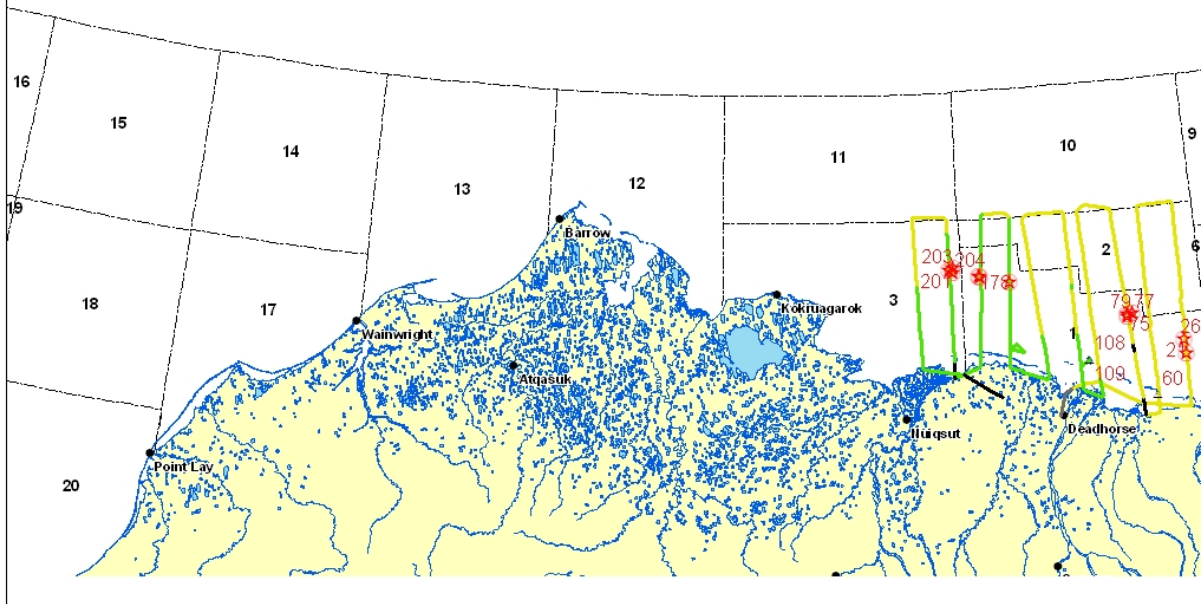
Sightings: Bowheads, numerous polar bears on/near Cross Island and one on another barrier island, bearded seals and probable ringed seals.

Bowhead Preliminary Summary, Flight 23 Date: 9/12/2008

Total bowheads: 14	Start time: 9/12/2008 12:00:34 PM	End time: 9/12/2008 7:41:11 PM
Bowhead sightings: 11	Transect minutes: 315	Transect km: 1053.5
Bowheads on transect: 8	Connect minutes: 37	Connect km: 117.4
Bowhead calves: 0	Trans+Con minutes: 352	Trans+Con km: 1170.9
Bowhead calves on transect: 0	Search minutes: 66	Search km: 179.7
Bowhead repeats: 0	Total minutes: 461	Total km: 1464.3
Possible repeats: 0	Deadhead minutes: 43	Deadhead km: 113.7
Total gray whales: 0	Search blocks: 1, 10, 0, 2, 3, 11	
Total belugas: 0	Transect blocks: 1, 2, 0, 10, 3, 11	
Other whale sightings: 0		
Total walrus: 0		
Total bear: 14		

Event	Lat	Long	Block	Species	Total	Repeat	Calves	Swim direction	Swim Speed	Behavior	On effort
21	70.47	-146.34	1	bowhead	1	.	0	5	slow	swim	True
26	70.55	-146.35	1	bowhead	1	.	0	299	slow	swim	True
75	70.7	-147.25	1	bowhead	2	.	0	111	slow	swim	True
77	70.72	-147.16	1	bowhead	1	.	0	-1	slow	swim	False
79	70.72	-147.25	1	bowhead	1	.	0	90	slow	swim	True
159	70.94	-149.18	1	bowhead	1	.	0	272	fast	swim	True
176	70.98	-149.65	1	bowhead	1	.	0	334	fast	swim	True
178	70.98	-149.68	1	bowhead	1	.	0	-1	fast	swim	False
201	71.02	-150.18	3	bowhead	1	.	0	268	fast	swim	True
203	71.03	-150.11	3	bowhead	3	.	0	-1	fast	swim	False
204	71.01	-150.11	3	bowhead	1	.	0	-1	medium	swim	False

Minerals Management Service
Bowhead Whale Aerial Survey Program
Flight 23, 9/12/2008



Meteorological/Oceanographic Summary, Flight 23 Date: 9/12/2008

Event	Lat	Long	Time	Type	% Ice	SeaState	Sky	Vis impeded left	Vis impeded right
1	70.19	-148.49	12:00:34 PM	.	-1
2	70.31	-148.37	12:05:11 PM	no ice	0	B3 scattered caps, 7-10 kt	overcast	2-3 km	2-3 km
3	70.34	-148.24	12:06:35 PM	no ice	0	B3 scattered caps, 7-10 kt	overcast	<1 km	<1 km
4	70.35	-148.09	12:07:55 PM	no ice	0	B3 scattered caps, 7-10 kt	overcast	2-3 km	<1 km
5	70.36	-147.83	12:10:24 PM	no ice	0	B3 scattered caps, 7-10 kt	overcast	<1 km	<1 km
6	70.32	-147.65	12:12:04 PM	no ice	0	B3 scattered caps, 7-10 kt	overcast	1-2 km	3-5 km

7	70.27	- 147.38	12:14:33 PM	no ice	0	B3 scattered caps, 7-10 kt	overcast	<1 km	<1 km
8	70.22	- 147.14	12:16:49 PM	no ice	0	B4 numerous caps, 11- 16 kt	overcast	2-3 km	2-3 km
9	70.22	- 147.06	12:17:26 PM	no ice	0	B4 numerous caps, 11- 16 kt	overcast	3-5 km	3-5 km
10	70.19	- 146.55	12:21:36 PM	no ice	0	B4 numerous caps, 11- 16 kt	overcast	<1 km	3-5 km
11	70.18	- 146.36	12:23:28 PM	no ice	0	B4 numerous caps, 11- 16 kt	overcast	1-2 km	3-5 km
12	70.21	- 146.36	12:24:44 PM	no ice	0	B4 numerous caps, 11- 16 kt	overcast	2-3 km	3-5 km
13	70.23	- 146.36	12:25:08 PM	no ice	0	B4 numerous caps, 11- 16 kt	overcast	2-3 km	1-2 km
14	70.25	- 146.36	12:25:47 PM	no ice	0	B4 numerous caps, 11- 16 kt	overcast	2-3 km	<1 km
15	70.27	- 146.36	12:26:34 PM	no ice	0	B4 numerous caps, 11- 16 kt	overcast	2-3 km	1-2 km
16	70.28	- 146.36	12:27:04 PM	no ice	0	n/a	overcast	0 km	0 km
19	70.46	- 146.35	12:33:41 PM	no ice	0	n/a	overcast	0 km	0 km
20	70.46	- 146.34	12:33:54 PM	no ice	0	B3 scattered caps, 7-10 kt	overcast	0 km	0 km
21	70.47	- 146.34	12:33:59 PM	no ice	0	B3 scattered caps, 7-10 kt	overcast	0 km	0 km
22	70.46	- 146.39	12:35:40 PM	no ice	0	B3 scattered caps, 7-10 kt	overcast	2-3 km	5-10 km
23	70.44	- 146.36	12:36:48 PM	no ice	0	B3 scattered caps, 7-10 kt	overcast	3-5 km	5-10 km
24	70.48	- 146.35	12:38:25 PM	no ice	0	B3 scattered caps, 7-10 kt	overcast	2-3 km	5-10 km
25	70.53	- 146.35	12:39:55 PM	no ice	0	B3 scattered caps, 7-10 kt	overcast	3-5 km	5-10 km
26	70.55	- 146.35	12:40:32 PM	no ice	0	B3 scattered caps, 7-10 kt	overcast	3-5 km	5-10 km
27	70.58	- 146.35	12:41:25 PM	no ice	0	B4 numerous caps, 11- 16 kt	overcast	3-5 km	5-10 km
28	70.66	- 146.35	12:44:16 PM	no ice	0	B4 numerous caps, 11- 16 kt	overcast	<1 km	<1 km

29	70.67	- 146.35	12:44:35 PM	no ice	0	B4 numerous caps, 11- 16 kt	overcast	<1 km	1-2 km
30	70.69	- 146.35	12:45:27 PM	no ice	0	B4 numerous caps, 11- 16 kt	overcast	3-5 km	2-3 km
31	70.72	- 146.35	12:46:25 PM	no ice	0	B4 numerous caps, 11- 16 kt	overcast	2-3 km	1-2 km
32	70.74	- 146.36	12:46:55 PM	no ice	0	B4 numerous caps, 11- 16 kt	overcast	1-2 km	1-2 km
33	70.76	- 146.36	12:47:36 PM	no ice	0	B4 numerous caps, 11- 16 kt	overcast	3-5 km	1-2 km
34	70.78	- 146.34	12:48:16 PM	no ice	0	B4 numerous caps, 11- 16 kt	overcast	3-5 km	5-10 km
35	70.94	- 146.33	12:53:42 PM	no ice	0	B4 numerous caps, 11- 16 kt	overcast	3-5 km	5-10 km
36	71.08	- 146.34	12:58:31 PM	no ice	0	B4 numerous caps, 11- 16 kt	overcast	3-5 km	5-10 km
37	71.09	- 146.34	12:58:48 PM	no ice	0	B4 numerous caps, 11- 16 kt	overcast	5-10 km	5-10 km
38	71.21	- 146.33	1:02:39 PM	no ice	0	B4 numerous caps, 11- 16 kt	overcast	5-10 km	<1 km
39	71.3	- 146.33	1:05:30 PM	no ice	0	B4 numerous caps, 11- 16 kt	overcast	2-3 km	5-10 km
40	71.3	- 146.33	1:05:41 PM	no ice	0	B4 numerous caps, 11- 16 kt	overcast	2-3 km	5-10 km
41	71.31	- 146.35	1:06:10 PM	no ice	0	B4 numerous caps, 11- 16 kt	overcast	2-3 km	5-10 km
42	71.31	- 146.85	1:11:38 PM	no ice	0	B4 numerous caps, 11- 16 kt	overcast	2-3 km	5-10 km
43	71.31	-146.9	1:12:05 PM	no ice	0	B4 numerous caps, 11- 16 kt	overcast	2-3 km	5-10 km
44	71.29	- 146.93	1:12:52 PM	no ice	0	B3 scattered caps, 7-10 kt	overcast	5-10 km	5-10 km
45	71.13	- 146.93	1:18:07 PM	no ice	0	B3 scattered caps, 7-10 kt	overcast	5-10 km	5-10 km
46	71.09	- 146.92	1:19:28 PM	no ice	0	B4 numerous caps, 11- 16 kt	overcast	5-10 km	5-10 km
47	70.93	- 146.92	1:24:32 PM	no ice	0	B4 numerous caps, 11- 16 kt	overcast	5-10 km	5-10 km
48	70.83	- 146.91	1:27:55 PM	no ice	0	B3 scattered caps, 7-10 kt	overcast	3-5 km	5-10 km

49	70.73	-146.9	1:31:14 PM	no ice	0	B3 scattered caps, 7-10 kt	overcast	2-3 km	5-10 km
50	70.69	-146.9	1:32:21 PM	no ice	0	B3 scattered caps, 7-10 kt	overcast	3-5 km	5-10 km
51	70.65	-146.9	1:33:43 PM	no ice	0	B3 scattered caps, 7-10 kt	overcast	3-5 km	3-5 km
52	70.63	-146.91	1:34:30 PM	no ice	0	B3 scattered caps, 7-10 kt	overcast	<1 km	<1 km
53	70.6	-146.92	1:35:10 PM	no ice	0	B3 scattered caps, 7-10 kt	overcast	<1 km	3-5 km
54	70.56	-146.89	1:36:24 PM	no ice	0	B3 scattered caps, 7-10 kt	overcast	3-5 km	3-5 km
55	70.52	-146.89	1:37:38 PM	no ice	0	B3 scattered caps, 7-10 kt	overcast	<1 km	<1 km
56	70.49	-146.89	1:38:43 PM	no ice	0	B3 scattered caps, 7-10 kt	overcast	3-5 km	5-10 km
57	70.43	-146.88	1:40:48 PM	no ice	0	B3 scattered caps, 7-10 kt	overcast	<1 km	5-10 km
58	70.42	-146.88	1:41:11 PM	no ice	0	B3 scattered caps, 7-10 kt	overcast	2-3 km	5-10 km
59	70.35	-146.88	1:43:21 PM	no ice	0	B3 scattered caps, 7-10 kt	overcast	5-10 km	5-10 km
60	70.26	-146.87	1:46:08 PM	no ice	0	B3 scattered caps, 7-10 kt	overcast	5-10 km	5-10 km
61	70.18	-146.87	1:49:01 PM	no ice	0	B3 scattered caps, 7-10 kt	overcast	5-10 km	5-10 km
62	70.16	-146.89	1:49:43 PM	no ice	0	n/a	overcast	0 km	0 km
64	70.15	-147.11	1:53:05 PM	no ice	0	B3 scattered caps, 7-10 kt	overcast	1-2 km	5-10 km
65	70.25	-147.13	1:56:32 PM	no ice	0	B3 scattered caps, 7-10 kt	overcast	3-5 km	5-10 km
66	70.3	-147.15	1:58:14 PM	no ice	0	B3 scattered caps, 7-10 kt	overcast	5-10 km	5-10 km
67	70.4	-147.17	2:01:26 PM	no ice	0	B3 scattered caps, 7-10 kt	overcast	5-10 km	3-5 km
68	70.48	-147.19	2:04:03 PM	no ice	0	B3 scattered caps, 7-10 kt	overcast	1-2 km	<1 km
69	70.5	-147.2	2:04:44 PM	no ice	0	n/a	overcast	0 km	0 km

70	70.51	-147.2	2:05:08 PM	no ice	0	B3 scattered caps, 7-10 kt	overcast	1-2 km	0 km
71	70.55	-147.21	2:06:22 PM	no ice	0	B3 scattered caps, 7-10 kt	overcast	<1 km	0 km
72	70.63	-147.23	2:08:51 PM	no ice	0	B3 scattered caps, 7-10 kt	overcast	2-3 km	<1 km
73	70.65	-147.24	2:09:34 PM	no ice	0	B3 scattered caps, 7-10 kt	overcast	2-3 km	<1 km
74	70.68	-147.24	2:10:35 PM	no ice	0	B3 scattered caps, 7-10 kt	overcast	3-5 km	5-10 km
75	70.7	-147.25	2:11:15 PM	no ice	0	B3 scattered caps, 7-10 kt	overcast	3-5 km	5-10 km
76	70.71	-147.25	2:11:31 PM	no ice	0	B3 scattered caps, 7-10 kt	overcast	3-5 km	5-10 km
77	70.72	-147.16	2:12:54 PM	no ice	0	B3 scattered caps, 7-10 kt	overcast	3-5 km	5-10 km
78	70.7	-147.25	2:14:38 PM	no ice	0	B3 scattered caps, 7-10 kt	overcast	3-5 km	5-10 km
79	70.72	-147.25	2:15:01 PM	no ice	0	B3 scattered caps, 7-10 kt	overcast	3-5 km	5-10 km
80	70.79	-147.27	2:17:33 PM	no ice	0	B3 scattered caps, 7-10 kt	overcast	5-10 km	5-10 km
81	70.95	-147.31	2:22:45 PM	no ice	0	B3 scattered caps, 7-10 kt	overcast	5-10 km	5-10 km
82	71.1	-147.35	2:27:53 PM	no ice	0	B3 scattered caps, 7-10 kt	overcast	5-10 km	5-10 km
83	71.25	-147.39	2:32:58 PM	no ice	0	B3 scattered caps, 7-10 kt	overcast	3-5 km	5-10 km
84	71.27	-147.39	2:33:25 PM	no ice	0	B4 numerous caps, 11-16 kt	overcast	3-5 km	5-10 km
85	71.3	-147.4	2:34:28 PM	no ice	0	B4 numerous caps, 11-16 kt	overcast	3-5 km	5-10 km
86	71.33	-147.82	2:39:32 PM	no ice	0	B4 numerous caps, 11-16 kt	overcast	3-5 km	5-10 km
88	71.32	-147.92	2:40:50 PM	no ice	0	B4 numerous caps, 11-16 kt	overcast	3-5 km	5-10 km
90	71.3	-147.96	2:41:35 PM	no ice	0	B3 scattered caps, 7-10 kt	overcast	3-5 km	3-5 km
91	71.27	-147.96	2:42:38 PM	no ice	0	B3 scattered caps, 7-10 kt	overcast	3-5 km	5-10 km

92	71.22	- 147.94	2:44:24 PM	no ice	0	B3 scattered caps, 7-10 kt	overcast	<1 km	<1 km
93	71.21	- 147.94	2:44:32 PM	no ice	0	B3 scattered caps, 7-10 kt	overcast	2-3 km	5-10 km
94	71.06	- 147.91	2:49:44 PM	no ice	0	B3 scattered caps, 7-10 kt	overcast	2-3 km	5-10 km
95	71	-147.9	2:51:42 PM	no ice	0	B3 scattered caps, 7-10 kt	overcast	5-10 km	5-10 km
96	70.83	- 147.87	2:57:30 PM	no ice	0	B3 scattered caps, 7-10 kt	overcast	5-10 km	5-10 km
97	70.79	- 147.87	2:58:41 PM	no ice	0	B3 scattered caps, 7-10 kt	overcast	5-10 km	5-10 km
98	70.71	- 147.85	3:01:30 PM	no ice	0	B3 scattered caps, 7-10 kt	overcast	3-5 km	5-10 km
99	70.55	- 147.82	3:06:40 PM	no ice	0	B3 scattered caps, 7-10 kt	overcast	3-5 km	5-10 km
100	70.53	- 147.82	3:07:23 PM	no ice	0	B2 sm waves, 4-6 kt	overcast	3-5 km	5-10 km
101	70.38	-147.8	3:12:28 PM	no ice	0	B2 sm waves, 4-6 kt	overcast	3-5 km	5-10 km
102	70.29	- 147.77	3:15:36 PM	no ice	0	B2 sm waves, 4-6 kt	overcast	3-5 km	5-10 km
103	70.28	-147.8	3:16:11 PM	no ice	0	B2 sm waves, 4-6 kt	overcast	3-5 km	5-10 km
104	70.32	- 148.07	3:20:18 PM	no ice	0	B2 sm waves, 4-6 kt	overcast	3-5 km	5-10 km
106	70.34	- 148.08	3:20:54 PM	no ice	0	B2 sm waves, 4-6 kt	overcast	3-5 km	5-10 km
107	70.45	-148.1	3:24:49 PM	no ice	0	B2 sm waves, 4-6 kt	overcast	3-5 km	5-10 km
108	70.49	- 147.94	3:27:29 PM	no ice	0	B2 sm waves, 4-6 kt	overcast	3-5 km	5-10 km
109	70.48	- 147.94	3:27:35 PM	no ice	0	B2 sm waves, 4-6 kt	overcast	3-5 km	5-10 km
110	70.45	-148.1	3:29:56 PM	no ice	0	B2 sm waves, 4-6 kt	overcast	3-5 km	5-10 km
111	70.58	- 148.11	3:34:27 PM	no ice	0	B3 scattered caps, 7-10 kt	overcast	5-10 km	5-10 km
112	70.64	- 148.13	3:36:23 PM	no ice	0	B3 scattered caps, 7-10 kt	overcast	5-10 km	5-10 km

113	70.78	- 148.13	3:40:53 PM	no ice	0	B2 sm waves, 4-6 kt	overcast	5-10 km	5-10 km
114	70.88	- 148.15	3:44:23 PM	no ice	0	B3 scattered caps, 7-10 kt	overcast	5-10 km	5-10 km
115	70.91	- 148.15	3:45:22 PM	no ice	0	B3 scattered caps, 7-10 kt	overcast	5-10 km	5-10 km
116	70.95	- 148.15	3:46:46 PM	no ice	0	B3 scattered caps, 7-10 kt	overcast	5-10 km	5-10 km
117	71.08	- 148.17	3:51:01 PM	no ice	0	B3 scattered caps, 7-10 kt	overcast	5-10 km	5-10 km
118	71.12	- 148.18	3:52:18 PM	no ice	0	B3 scattered caps, 7-10 kt	overcast	1-2 km	1-2 km
120	71.16	- 148.17	3:53:44 PM	no ice	0	B3 scattered caps, 7-10 kt	overcast	5-10 km	5-10 km
121	71.3	- 148.19	3:58:09 PM	no ice	0	B3 scattered caps, 7-10 kt	overcast	5-10 km	5-10 km
122	71.31	- 148.22	3:58:30 PM	no ice	0	B3 scattered caps, 7-10 kt	overcast	5-10 km	2-3 km
123	71.31	-148.5	4:01:35 PM	no ice	0	B3 scattered caps, 7-10 kt	overcast	<1 km	2-3 km
124	71.31	- 148.78	4:04:32 PM	no ice	0	B3 scattered caps, 7-10 kt	overcast	<1 km	<1 km
125	71.3	- 148.83	4:05:08 PM	no ice	0	B4 numerous caps, 11- 16 kt	overcast	<1 km	<1 km
126	71.29	- 148.89	4:05:45 PM	no ice	0	B4 numerous caps, 11- 16 kt	overcast	<1 km	<1 km
127	71.28	-148.9	4:06:06 PM	no ice	0	B4 numerous caps, 11- 16 kt	overcast	<1 km	<1 km
128	71.26	- 148.89	4:06:36 PM	no ice	0	B4 numerous caps, 11- 16 kt	overcast	1-2 km	3-5 km
129	71.24	- 148.89	4:07:22 PM	no ice	0	B4 numerous caps, 11- 16 kt	partly cloudy	5-10 km	5-10 km
130	71.13	- 148.85	4:10:54 PM	no ice	0	B4 numerous caps, 11- 16 kt	partly cloudy	3-5 km	3-5 km
131	71.01	- 148.81	4:15:02 PM	no ice	0	B4 numerous caps, 11- 16 kt	partly cloudy	5-10 km	5-10 km
132	70.86	- 148.76	4:20:11 PM	no ice	0	B4 numerous caps, 11- 16 kt	partly cloudy	5-10 km	5-10 km
133	70.79	- 148.74	4:22:25 PM	no ice	0	B3 scattered caps, 7-10 kt	partly cloudy	5-10 km	5-10 km

134	70.78	-148.74	4:22:45 PM	no ice	0	B3 scattered caps, 7-10 kt	partly cloudy	5-10 km	5-10 km
135	70.68	-148.71	4:26:17 PM	no ice	0	B3 scattered caps, 7-10 kt	partly cloudy	5-10 km	5-10 km
136	70.67	-148.7	4:26:28 PM	no ice	0	B3 scattered caps, 7-10 kt	partly cloudy	5-10 km	5-10 km
137	70.66	-148.7	4:26:42 PM	no ice	0	B3 scattered caps, 7-10 kt	partly cloudy	5-10 km	5-10 km
138	70.64	-148.69	4:27:31 PM	no ice	0	B2 sm waves, 4-6 kt	partly cloudy	5-10 km	5-10 km
139	70.64	-148.69	4:27:37 PM	no ice	0	B2 sm waves, 4-6 kt	partly cloudy	5-10 km	5-10 km
140	70.61	-148.69	4:28:25 PM	no ice	0	B2 sm waves, 4-6 kt	partly cloudy	5-10 km	5-10 km
141	70.59	-148.68	4:29:15 PM	no ice	0	B2 sm waves, 4-6 kt	partly cloudy	5-10 km	5-10 km
142	70.51	-148.65	4:31:52 PM	no ice	0	B2 sm waves, 4-6 kt	partly cloudy	5-10 km	5-10 km
143	70.41	-148.62	4:35:14 PM	no ice	0	B2 sm waves, 4-6 kt	partly cloudy	5-10 km	5-10 km
144	70.4	-148.64	4:35:50 PM	no ice	0	B2 sm waves, 4-6 kt	overcast	5-10 km	5-10 km
145	70.44	-149.05	4:40:55 PM	no ice	0	B2 sm waves, 4-6 kt	overcast	5-10 km	5-10 km
146	70.45	-149.06	4:42:35 PM	no ice	0	B2 sm waves, 4-6 kt	overcast	5-10 km	5-10 km
147	70.47	-149.24	4:44:54 PM	no ice	0	B2 sm waves, 4-6 kt	overcast	5-10 km	5-10 km
148	70.49	-149.25	4:45:40 PM	no ice	0	B2 sm waves, 4-6 kt	overcast	5-10 km	5-10 km
150	70.58	-149.24	4:48:37 PM	no ice	0	B2 sm waves, 4-6 kt	overcast	5-10 km	5-10 km
151	70.6	-149.12	4:53:41 PM	no ice	0	B2 sm waves, 4-6 kt	overcast	5-10 km	5-10 km
152	70.55	-149.01	4:58:45 PM	no ice	0	B2 sm waves, 4-6 kt	overcast	5-10 km	5-10 km
153	70.58	-149.23	5:05:09 PM	no ice	0	B2 sm waves, 4-6 kt	overcast	5-10 km	5-10 km
154	70.61	-149.22	5:06:10 PM	no ice	0	B2 sm waves, 4-6 kt	overcast	5-10 km	5-10 km

155	70.64	- 149.22	5:07:23 PM	no ice	0	B2 sm waves, 4-6 kt	overcast	5-10 km	5-10 km
156	70.75	- 149.21	5:10:51 PM	no ice	0	B2 sm waves, 4-6 kt	overcast	3-5 km	5-10 km
157	70.92	- 149.18	5:16:28 PM	no ice	0	B2 sm waves, 4-6 kt	overcast	5-10 km	5-10 km
159	70.94	- 149.18	5:17:09 PM	no ice	0	B2 sm waves, 4-6 kt	overcast	5-10 km	5-10 km
162	70.94	- 149.18	5:17:23 PM	no ice	0	B2 sm waves, 4-6 kt	overcast	5-10 km	5-10 km
163	70.94	- 149.18	5:18:45 PM	no ice	0	B2 sm waves, 4-6 kt	overcast	5-10 km	5-10 km
165	71.02	- 149.17	5:21:16 PM	no ice	0	B3 scattered caps, 7-10 kt	partly cloudy	5-10 km	5-10 km
168	71.3	- 149.13	5:30:41 PM	no ice	0	B3 scattered caps, 7-10 kt	partly cloudy	5-10 km	5-10 km
169	71.31	- 149.15	5:31:07 PM	no ice	0	B3 scattered caps, 7-10 kt	partly cloudy	5-10 km	5-10 km
170	71.32	- 149.22	5:31:52 PM	no ice	0	B2 sm waves, 4-6 kt	partly cloudy	5-10 km	5-10 km
171	71.33	- 149.59	5:35:50 PM	no ice	0	B2 sm waves, 4-6 kt	partly cloudy	5-10 km	5-10 km
172	71.3	- 149.61	5:36:35 PM	no ice	0	B2 sm waves, 4-6 kt	partly cloudy	5-10 km	5-10 km
173	71.18	- 149.62	5:40:47 PM	no ice	0	B2 sm waves, 4-6 kt	partly cloudy	5-10 km	1-2 km
174	71.13	- 149.63	5:42:21 PM	no ice	0	B2 sm waves, 4-6 kt	partly cloudy	<1 km	<1 km
175	71.1	- 149.64	5:43:21 PM	no ice	0	B2 sm waves, 4-6 kt	partly cloudy	5-10 km	5-10 km
176	70.98	- 149.65	5:47:24 PM	no ice	0	B2 sm waves, 4-6 kt	partly cloudy	5-10 km	5-10 km
177	70.97	- 149.65	5:47:26 PM	no ice	0	B2 sm waves, 4-6 kt	partly cloudy	5-10 km	5-10 km
178	70.98	- 149.68	5:48:29 PM	no ice	0	B2 sm waves, 4-6 kt	partly cloudy	5-10 km	5-10 km
179	70.97	- 149.65	5:49:02 PM	no ice	0	B2 sm waves, 4-6 kt	partly cloudy	5-10 km	5-10 km
180	70.94	- 149.66	5:50:16 PM	no ice	0	B2 sm waves, 4-6 kt	partly cloudy	3-5 km	5-10 km

181	70.89	-149.66	5:52:00 PM	no ice	0	B2 sm waves, 4-6 kt	partly cloudy	3-5 km	5-10 km
182	70.87	-149.66	5:52:29 PM	no ice	0	B2 sm waves, 4-6 kt	partly cloudy	<1 km	5-10 km
183	70.86	-149.66	5:52:39 PM	no ice	0	B2 sm waves, 4-6 kt	partly cloudy	3-5 km	5-10 km
184	70.7	-149.7	5:58:01 PM	no ice	0	B2 sm waves, 4-6 kt	partly cloudy	5-10 km	5-10 km
185	70.55	-149.72	6:03:12 PM	no ice	0	B2 sm waves, 4-6 kt	partly cloudy	5-10 km	5-10 km
186	70.53	-149.73	6:03:51 PM	no ice	0	B2 sm waves, 4-6 kt	partly cloudy	5-10 km	5-10 km
187	70.5	-149.73	6:04:57 PM	no ice	0	B2 sm waves, 4-6 kt	partly cloudy	5-10 km	5-10 km
188	70.48	-149.76	6:05:34 PM	no ice	0	n/a	partly cloudy	0 km	0 km
189	70.43	-150.16	6:10:40 PM	no ice	0	n/a	partly cloudy	0 km	0 km
190	70.44	-150.17	6:10:49 PM	no ice	0	B2 sm waves, 4-6 kt	partly cloudy	3-5 km	1-2 km
191	70.52	-150.16	6:13:48 PM	no ice	0	B2 sm waves, 4-6 kt	partly cloudy	<1 km	1-2 km
192	70.53	-150.16	6:13:56 PM	no ice	0	B2 sm waves, 4-6 kt	partly cloudy	3-5 km	3-5 km
193	70.72	-150.17	6:20:27 PM	no ice	0	B2 sm waves, 4-6 kt	partly cloudy	3-5 km	3-5 km
194	70.74	-150.17	6:20:59 PM	no ice	0	B2 sm waves, 4-6 kt	partly cloudy	5-10 km	2-3 km
195	70.75	-150.17	6:21:10 PM	no ice	0	B2 sm waves, 4-6 kt	overcast	5-10 km	<1 km
196	70.75	-150.17	6:21:25 PM	no ice	0	B2 sm waves, 4-6 kt	overcast	5-10 km	5-10 km
197	70.92	-150.17	6:27:06 PM	no ice	0	B2 sm waves, 4-6 kt	overcast	5-10 km	5-10 km
198	70.97	-150.18	6:28:50 PM	no ice	0	B2 sm waves, 4-6 kt	overcast	3-5 km	5-10 km
200	71	-150.18	6:29:41 PM	no ice	0	B2 sm waves, 4-6 kt	overcast	3-5 km	5-10 km
201	71.02	-150.18	6:30:33 PM	no ice	0	B2 sm waves, 4-6 kt	overcast	3-5 km	5-10 km

202	71.03	- 150.18	6:30:38 PM	no ice	0	B2 sm waves, 4-6 kt	overcast	3-5 km	5-10 km
203	71.03	- 150.11	6:31:32 PM	no ice	0	B2 sm waves, 4-6 kt	overcast	3-5 km	5-10 km
204	71.01	- 150.11	6:35:23 PM	no ice	0	B2 sm waves, 4-6 kt	overcast	3-5 km	5-10 km
205	71.03	- 150.18	6:37:01 PM	no ice	0	B2 sm waves, 4-6 kt	overcast	3-5 km	5-10 km
206	71.2	- 150.19	6:43:04 PM	no ice	0	B3 scattered caps, 7-10 kt	overcast	3-5 km	5-10 km
207	71.23	- 150.19	6:44:02 PM	no ice	0	B3 scattered caps, 7-10 kt	overcast	3-5 km	5-10 km
208	71.3	- 150.19	6:46:12 PM	no ice	0	B3 scattered caps, 7-10 kt	overcast	3-5 km	5-10 km
209	71.31	- 150.23	6:46:51 PM	no ice	0	B3 scattered caps, 7-10 kt	overcast	3-5 km	5-10 km
210	71.31	- 150.24	6:46:59 PM	no ice	0	B3 scattered caps, 7-10 kt	partly cloudy	5-10 km	5-10 km
211	71.32	- 150.75	6:52:18 PM	no ice	0	B3 scattered caps, 7-10 kt	partly cloudy	5-10 km	5-10 km
212	71.32	- 150.77	6:52:26 PM	no ice	0	B3 scattered caps, 7-10 kt	partly cloudy	5-10 km	5-10 km
213	71.31	- 150.78	6:52:58 PM	no ice	0	B3 scattered caps, 7-10 kt	partly cloudy	5-10 km	5-10 km
214	71.1	- 150.75	6:59:33 PM	no ice	0	B2 sm waves, 4-6 kt	overcast	5-10 km	5-10 km
215	70.94	- 150.73	7:04:54 PM	no ice	0	B2 sm waves, 4-6 kt	overcast	5-10 km	5-10 km
216	70.88	- 150.73	7:06:40 PM	no ice	0	B2 sm waves, 4-6 kt	overcast	5-10 km	5-10 km
217	70.73	- 150.71	7:11:45 PM	no ice	0	B2 sm waves, 4-6 kt	overcast	5-10 km	5-10 km
218	70.62	-150.7	7:15:12 PM	no ice	0	B2 sm waves, 4-6 kt	overcast	3-5 km	5-10 km
219	70.5	- 150.68	7:19:17 PM	no ice	0	B2 sm waves, 4-6 kt	overcast	3-5 km	5-10 km
220	70.49	- 150.67	7:19:42 PM	no ice	0	n/a	overcast	3-5 km	5-10 km
222	70.45	- 150.02	7:25:36 PM	no ice	0	n/a	overcast	3-5 km	5-10 km

223	70.34	- 149.54	7:30:39 PM	no ice	0	n/a	overcast	3-5 km	5-10 km
224	70.31	- 149.39	7:32:11 PM	no ice	0	n/a	overcast	3-5 km	5-10 km
225	70.31	- 149.39	7:41:11 PM	no ice	0	n/a	overcast	3-5 km	5-10 km